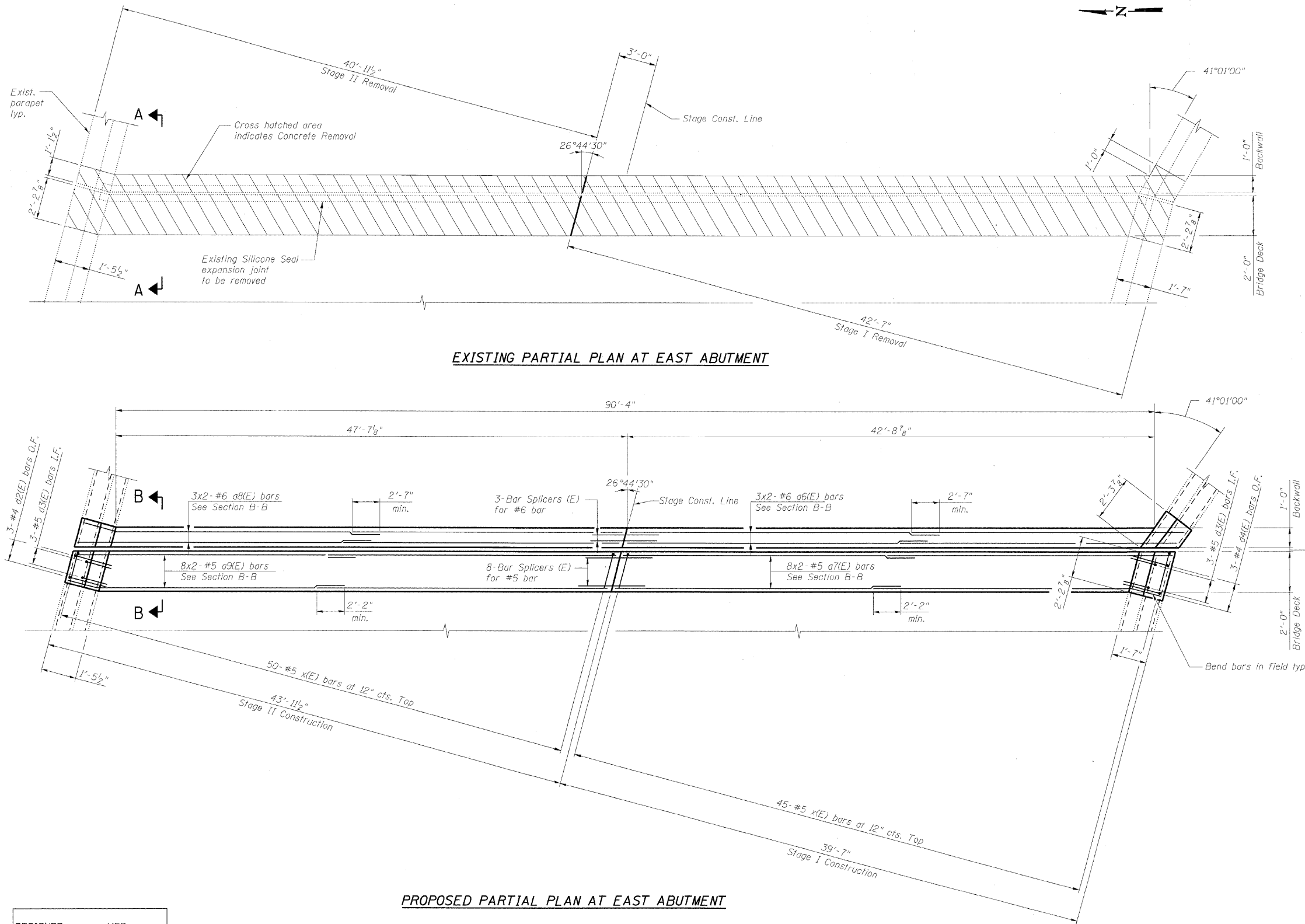
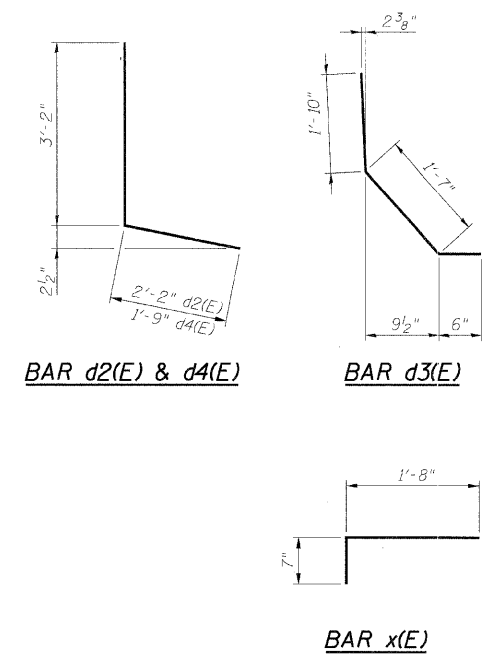


STATE OF ILLINOIS
DEPARTMENT OF TRANSPORTATION



BILL OF MATERIAL

Bar	No.	Size	Length	Shape
a6(E)	12	#6	23'-6"	—
a7(E)	32	#5	23'-2"	—
a8(E)	12	#6	25'-9"	—
a9(E)	32	#5	25'-5"	—
d2(E)	6	#4	5'-4"	└
d3(E)	12	#5	3'-11"	└
d4(E)	6	#4	4'-11"	└
x(E)	190	#5	2'-3"	└
Item	Unit	Total		
Concrete Removal	Cu. Yd.	28.9		
Concrete Superstructure	Cu. Yd.	28.9		
Reinforcement Bars, Epoxy Coated	Pound	3,050		



Notes:

- Bars indicated thus 8x2-#5 etc. indicates 8 lines of bars with 2 lengths per line.
- I.F. denotes Inside Face.
O.F. denotes Outside Face.
- Work this sheet with Expansion Joint Repairs Sheet 2 of 2, Expansion Joint Details sheet and Bar Splicer Assembly Details sheet.
- x(E) bar spacing measured along skew.

**EXPANSION JOINT REPAIRS
(1 OF 2)
STRUCTURE NO. 022-0005**

DESIGNED	MFB
CHECKED	KWS
DRAWN	VH/RMG
CHECKED	KWS

benesch

alfred benesch & company
Engineers • Surveyors • Planners
205 North Michigan Avenue, Suite 2400
Chicago, Illinois 60601
312-565-0450 Job No. 10050

SHEET NO. 10 25 SHEETS	F.A.I. RTE.	SECTION	COUNTY	TOTAL SHEETS	SHEET NO.
	290	2009-099 BR	COOK/DUPAGE	309	254
FED. ROAD DIST. NO.			ILLINOIS FED. AID PROJECT	CONTRACT NO. 60157	

11/12/2009 18:43:28 x:\100002a\100050\engineer\ng_documents_contract\1\an_022_0005_jorh.r.d\0005-60051-010-ExpJ-repairs.dgn