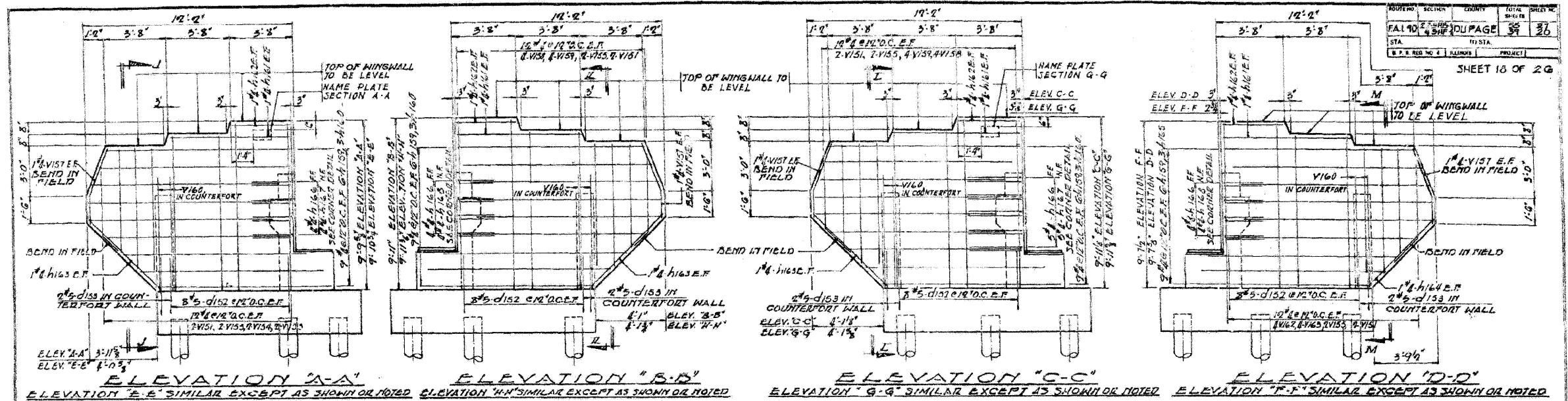
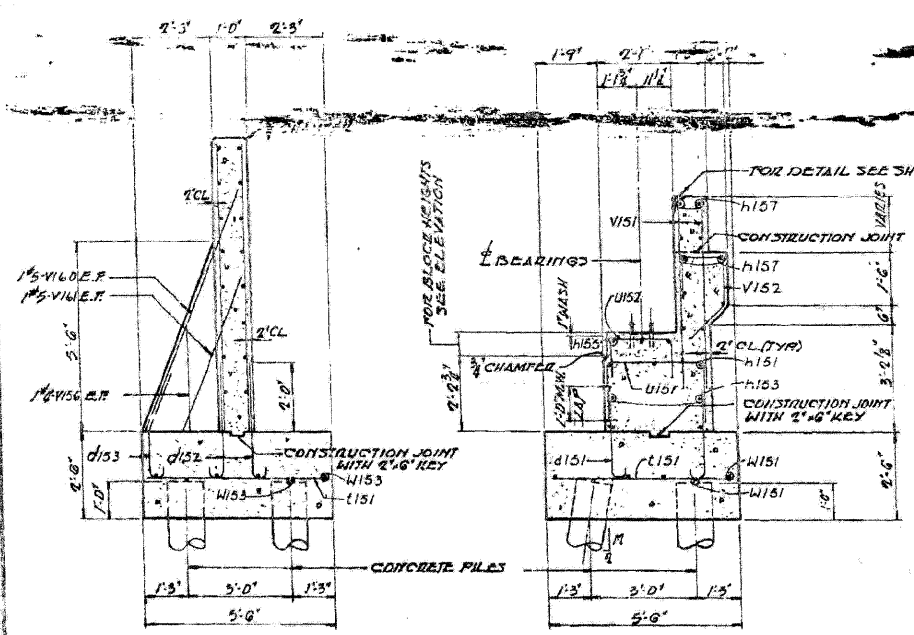


STATE OF ILLINOIS  
DEPARTMENT OF TRANSPORTATION

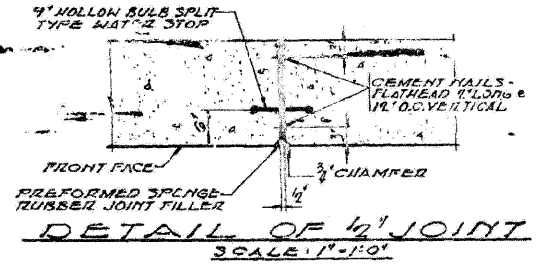


ELEVATION "A-A" ELEVATION "B-B" ELEVATION "C-C" ELEVATION "D-D"  
ELEVATION "E-E" SIMILAR EXCEPT AS SHOWN OR NOTED ELEVATION "H-H" SIMILAR EXCEPT AS SHOWN OR NOTED  
ELEVATION "G-G" SIMILAR EXCEPT AS SHOWN OR NOTED ELEVATION "F-F" SIMILAR EXCEPT AS SHOWN OR NOTED



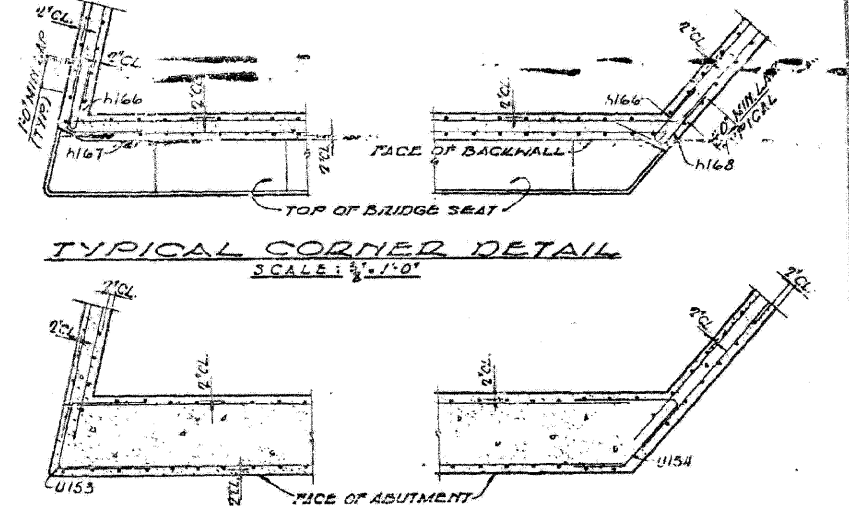
SECTION "J-J" SECTION "N-N"  
SECTIONS "K-K", "L-L" AND "M-M" SIMILAR SECTIONS "P-P", "Q-Q" AND "R-R" SIMILAR  
SCALE: 1/4" = 1'-0"

NOTE:  
SCALE MARKS AND DIMENSIONS SHOWN FOR SECTIONS J-J AND N-N ONLY.



DETAIL OF 1/2" JOINT  
SCALE: 1" = 1'-0"

NOTE:  
FOR FOOTING PLAN SEE SHEETS 12 AND 13.  
FOR ELEVATION OF ABUTMENTS  
AND LOCATION OF WINGWALLS SEE  
SHEETS 14, 15, 16 AND 17.



TYPICAL CORNER DETAIL  
SCALE: 3/8" = 1'-0"  
CORNER DETAIL BELOW BRIDGE SEAT  
SCALE: 3/8" = 1'-0"

ALFRED BENESCH & COMPANY  
10 SOUTH WASHINGTON AVE  
CHICAGO, ILLINOIS 60601  
CONSULTING ENGINEERS  
ILLINOIS

ABUTMENT DETAILS  
GRADE SEPARATION  
F.A.I. ROUTE 90 OVER  
E.A.S. 1135 (YORK ROAD)  
PROJECT  
F.A.I. ROUTE 90 SECTION 22 3RD  
DUPAGE COUNTY  
STATION 971+19.95

FOR INFORMATION ONLY

**benesch**  
Engineers • Surveyors • Planners  
205 North Michigan Avenue, Suite 2400  
Chicago, Illinois 60601  
312.565-0450 Job No. 10050

SHEET NO. 25 25 SHEETS	F.A.I. RTE.	SECTION	COUNTY	TOTAL SHEETS	SHEET NO.
	290	2009-099 BR	COOK/DUPAGE	309	269
FED. ROAD DIST. NO.			ILLINOIS FED. AID PROJECT		
			CONTRACT NO. 60157		

EXISTING PLAN INFORMATION 8 OF 10  
STRUCTURE NO. 022-0005