

**STAGE I  
PLAN DETAIL**

**STAGE I**

CONSTRUCT TEMPORARY PAVEMENT ALONG RIGHT SIDE OF EAST BOUND LANES AS NOTED IN THESE PLANS.

WEST BOUND - INSTALL TEMPORARY TRAFFIC CONTROL, CLOSING RIGHT LANE, AS DETAILED IN THESE PLANS AND IN ACCORDANCE WITH TRAFFIC CONTROL STANDARDS 701400 AND 701402.

EAST BOUND - INSTALL TEMPORARY TRAFFIC CONTROL, CLOSING LEFT LANE, AS DETAILED IN THESE PLANS AND IN ACCORDANCE WITH TRAFFIC CONTROL STANDARDS 701400 AND 701402.

REMOVE WEST SIDE OF BRIDGE DECKS, APPROACH PAVEMENTS, ADJACENT CURB AND GUTTER, SHOULDER AND GUARDRAIL.

CONSTRUCT NEW WEST SIDE OF BRIDGE DECKS, APPROACH PAVEMENTS, CURB AND GUTTER ALONG OUTSIDE OF WEST BOUND LANE, NEW SHOULDER AND INSTALL REQUIRED GUARDRAIL IMPROVEMENTS.

CONSTRUCT TEMPORARY PAVEMENT ALONG LEFT SIDE OF EAST BOUND LANES AS NOTED ON THESE PLANS.

**STAGE II**

WEST BOUND - RELOCATE TEMPORARY TRAFFIC CONTROL, CLOSING LEFT LANE, AS DETAILED IN THESE PLANS AND IN ACCORDANCE WITH TRAFFIC CONTROL STANDARDS 701400 AND 701402.

EAST BOUND - RELOCATE TEMPORARY TRAFFIC CONTROL, CLOSING RIGHT LANE, AS DETAILED IN THESE PLANS AND IN ACCORDANCE WITH TRAFFIC CONTROL STANDARDS 701400 AND 701402. FOLLOW STANDARD 701411 (APPLICATION NO. 2) FOR TRAFFIC CONTROL OF ENTRANCE RAMP.

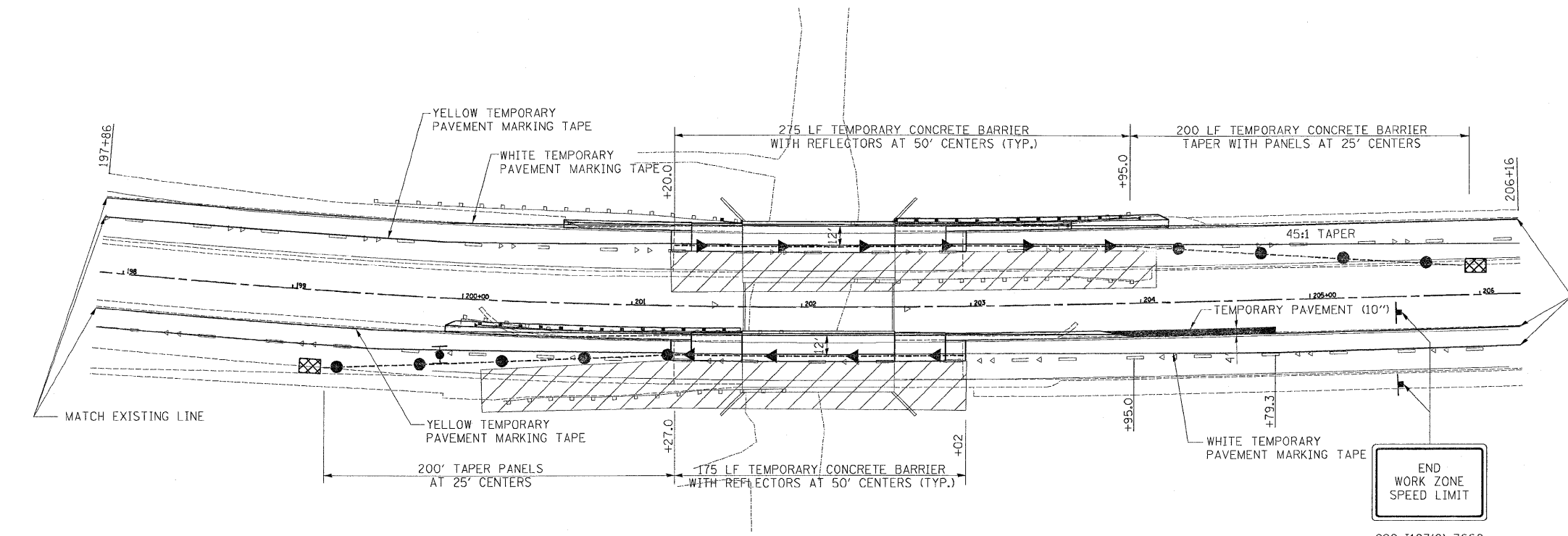
REMOVE EAST SIDE OF BRIDGE DECK, APPROACH PAVEMENTS, ADJACENT SHOULDER AND GUARDRAIL.

CONSTRUCT NEW EAST SIDE OF BRIDGE DECK, APPROACH PAVEMENTS, NEW SHOULDER AND INSTALL REQUIRED GUARDRAIL IMPROVEMENTS.

REMOVE TEMPORARY TRAFFIC CONTROL AND OPEN BOTH LANES OF TRAFFIC.

**STAGE III**

INSTALL PERMANENT PAVEMENT MARKING AND RAISED REFLECTIVE PAVEMENT MARKERS USING TRAFFIC CONTROL STANDARDS 701406 AND 701426 FOR DAY LANE CLOSURES.



**STAGE II  
PLAN DETAIL**

- Temporary Concrete Barrier
- ↑ Sign
- ↑ Arrow Board
- Type II Barricade, drum, or vertical barricade with steady burn monodirectional light
- ◆ Direction indicator barricade with steady burn monodirectional light
- ▨ Work Area
- ⊠ Impact Attenuator (non redirective) test level 3
- ◀ Type C monodirectional reflector
- Vertical panel with steady burn monodirectional light
- Temporary pavement marking tape

Note: To be Used with  
IDOT Standard 701400

FILE NAME = K:\11182508\cad\design\182508_stage.dwg	USER NAME = \$USER\$ jldgn	DESIGNED - DRAWN - JTT	REVISED - REVISED -	<b>STATE OF ILLINOIS DEPARTMENT OF TRANSPORTATION</b>	<b>IL RTE. 56 OVER BLACKBERRY CREEK MAINTENANCE OF TRAFFIC NOTES AND STAGING DETAILS</b>			F.A.P. RTE. 573	SECTION 61 B-BR-1	COUNTY KANE	TOTAL SHEETS 37	SHEET NO. 6
PLOT SCALE = 1:40	CHECKED - SPF	DATE - APRIL 02, 2009	REVISED -		SCALE: 1" = 40'	SHEET NO.	OF	SHEETS	STA.	TO STA.	CONTRACT NO. 62817	
PLOT DATE = 6/12/2009	DATE - APRIL 02, 2009	REVISED -	REVISED -		FED. ROAD DIST. NO.		ILLINOIS		FED. AID PROJECT			