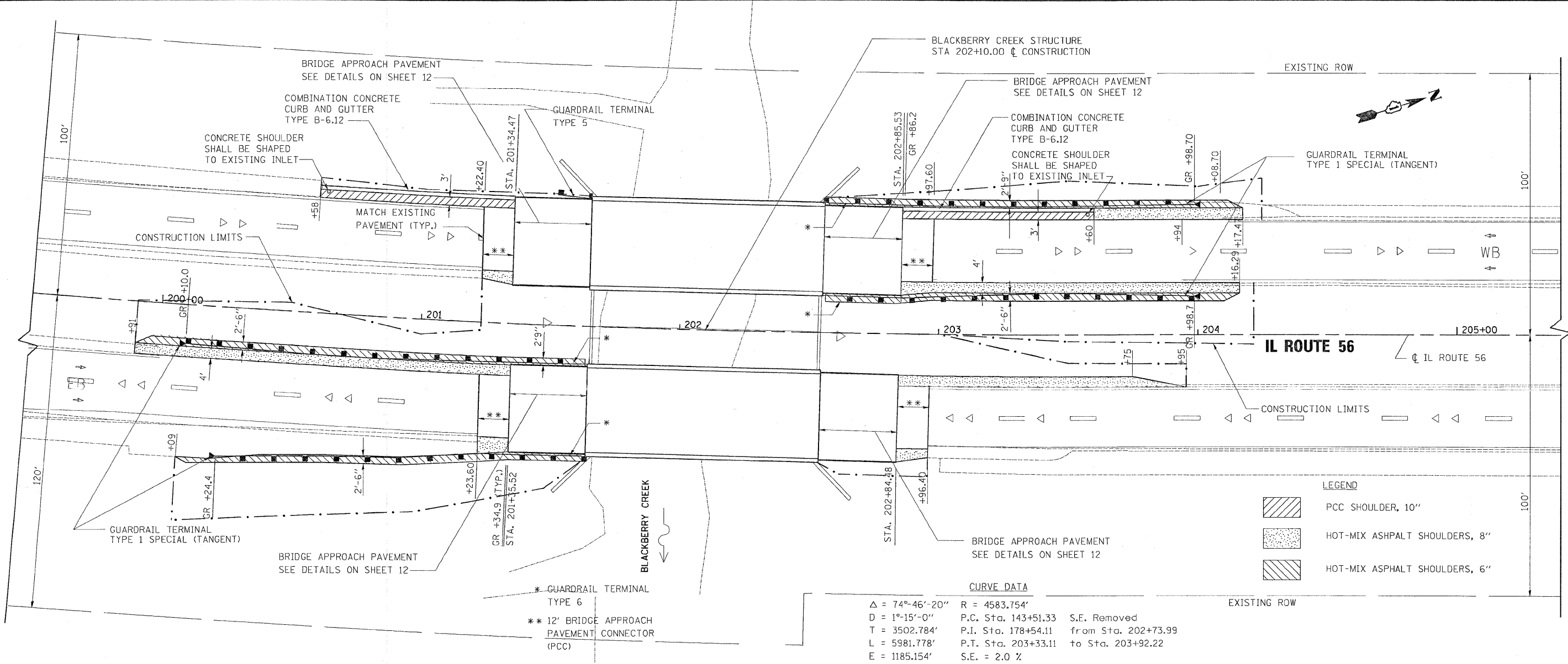


PLAN	SURVEYED	DATE
	PLOTTED	BY
	CHECKED	
	BY	
	DATE	
	NO. OF SHEETS	
	NO. OF THIS SHEET	
	NO. OF THIS SHEET	
	NO. OF THIS SHEET	
	NO. OF THIS SHEET	

PROFILE	SURVEYED	DATE
	PLOTTED	BY
	CHECKED	
	BY	
	DATE	
	NO. OF SHEETS	
	NO. OF THIS SHEET	
	NO. OF THIS SHEET	
	NO. OF THIS SHEET	
	NO. OF THIS SHEET	



**LEGEND**

	PCC SHOULDER, 10"
	HOT-MIX ASPHALT SHOULDERS, 8"
	HOT-MIX ASPHALT SHOULDERS, 6"

**CURVE DATA**

$\Delta = 74^{\circ}-46'-20''$	$R = 4583.754'$	
$D = 1^{\circ}-15'-0''$	P.C. Sta. 143+51.33	S.E. Removed
$T = 3502.784'$	P.I. Sta. 178+54.11	from Sta. 202+73.99
$L = 5981.778'$	P.T. Sta. 203+33.11	to Sta. 203+92.22
$E = 1185.154'$	S.E. = 2.0 %	



FILE NAME = k:\1182508\ced\design\182508.pp_prop.dgn	USER NAME = #USER#	DESIGNED -	REVISED -	<b>STATE OF ILLINOIS DEPARTMENT OF TRANSPORTATION</b>	<b>IL RTE. 56 OVER BLACKBERRY CREEK PROPOSED ROADWAY PLAN AND PROFILE</b>	F.A.P. RTE. 573	SECTION 61 B-BR-1	COUNTY KANE	TOTAL SHEETS 37	SHEET NO. 9	
PLOT SCALE = 1:20	CHECKED - SPF	DRAWN - JTT	REVISED -			CONTRACT NO. 62817					
PLOT DATE = 6/12/2009	DATE - APRIL 02, 2009	CHECKED -	REVISED -			FED. ROAD DIST. NO. [ILLINOIS] FED. AID PROJECT					
		DATE -	REVISED -			SCALE: SHEET NO. OF SHEETS STA. TO STA.					