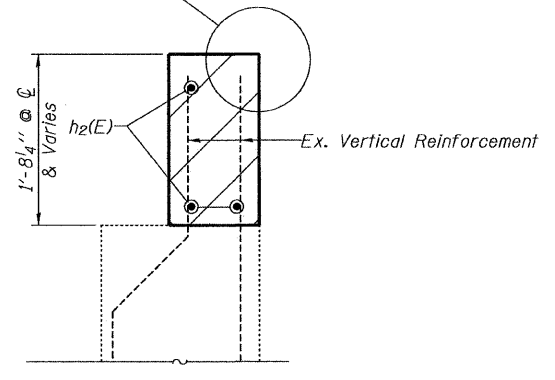


ELEVATION

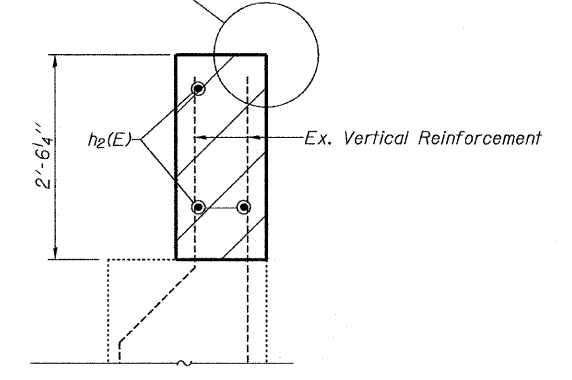
MIN. BAR LAP
#6 bar = 2'-7"

See Sheet 6 of 19 for Exp JT Details

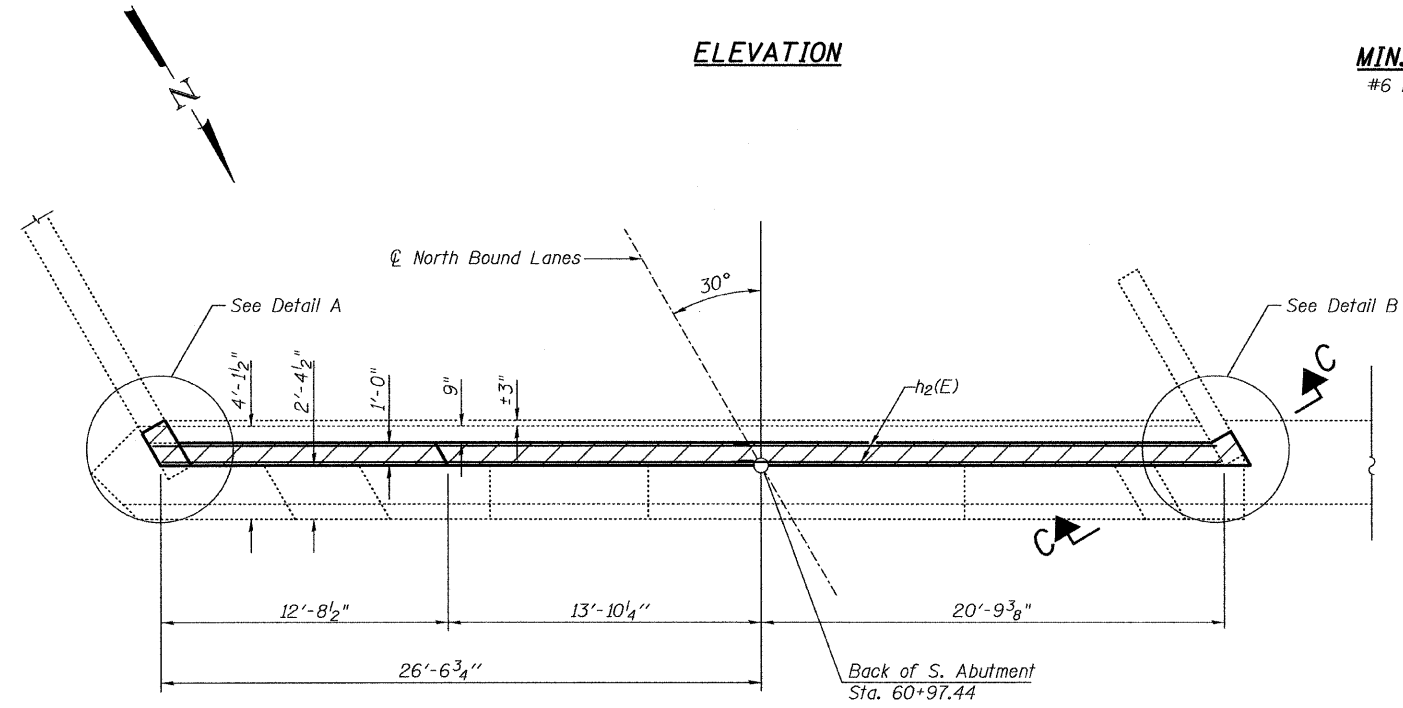
See Sheet 6 of 19 for Exp JT Details



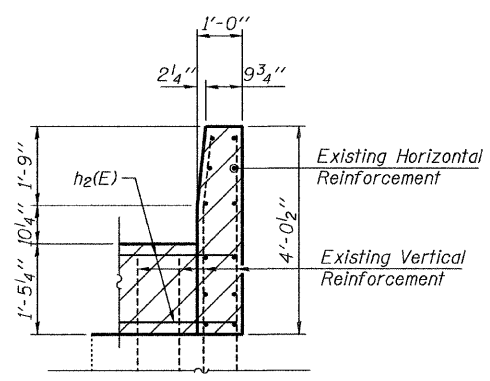
SECTION A-A



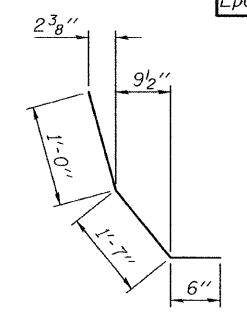
SECTION B-B



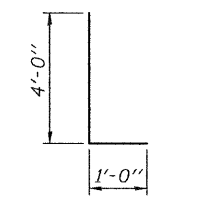
PLAN



SECTION C-C



BAR d3(E)



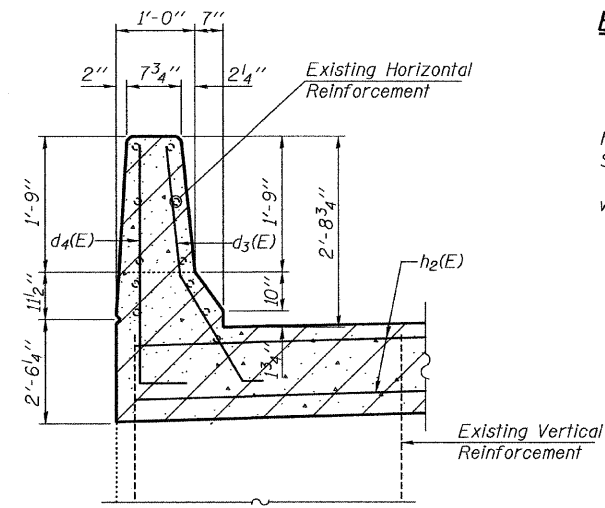
BAR d4(E)

BILL OF MATERIAL

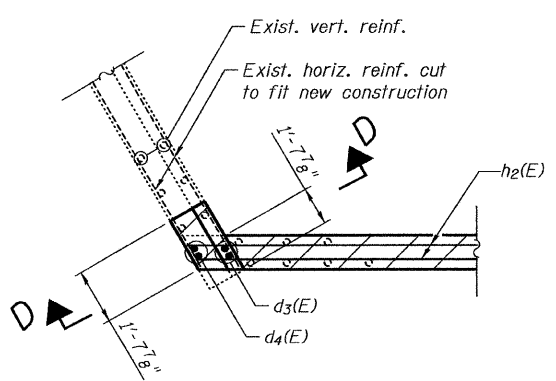
Bar	No.	Size	Length	Shape
h2(E)	6	#6	25'-5"	
d3(E)	2	#5	3'-1"	
d4(E)	3	#4	5'-0"	
Reinforcement Bars, Epoxy Coated			Pound	240

NOTES:

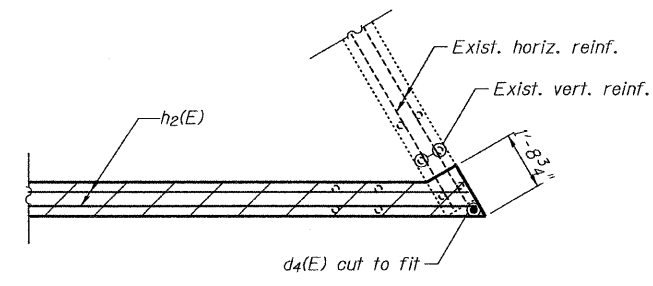
Pour hatched area after proposed deck is in place. Match top of hatched area to top of deck. Quantity included with Concrete Superstructure Sheet 4 of 19.
Bars indicated thus 3x2-#6 h2(E) indicates 3 lines of bars with 2 lengths per line.



SECTION D-D



DETAIL A



DETAIL B

PLOT DATE = 11/23/2009
FILE NAME = s:\8m-099-000-ent-13-south-abut-deta.dgn
PLOT SCALE = 40.0000 1/1 IN.
USER NAME = CFC

ILLINOIS DEPARTMENT OF TRANSPORTATION	
SHEET TITLE	
SOUTH ABUTMENT DETAILS	
PROJECT	PROJECT NO.
I-55 NB OVER KANKAKEE RIVER	03095-16
FAI ROUTE 55, SECTION BB(B&B-1)BR	SCALE
WILL COUNTY	DATE
SN 099-0001	9/23/09
DESIGNED BY	DRAWN BY
TFG	TFG
CHECKED BY	DATE
MCB	
DRAWING NO.	
COOMBE-BLOXDORF P.C.	13
Engineers / Land Surveyors	OF 19 SHTS
Springfield, Illinois	
Design Firm License No. 184-002703	