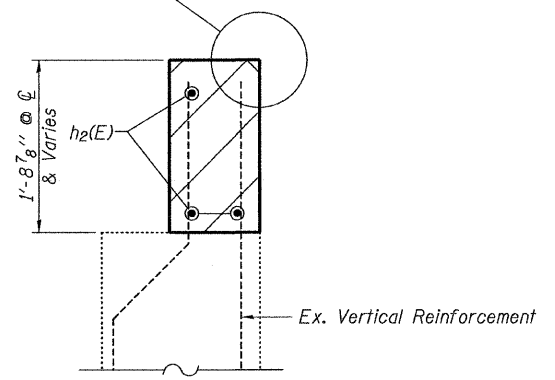


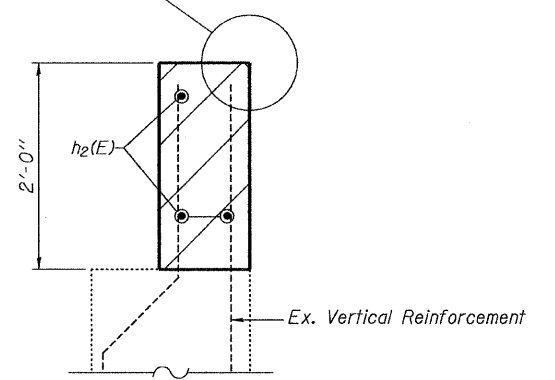
**ELEVATION**

\* Billed with Wingwall on Sheet 16 of 19  
See Sheet 6 of 19 for Exp JT Details

See Sheet 6 of 19 for Exp JT Details



**SECTION A-A**

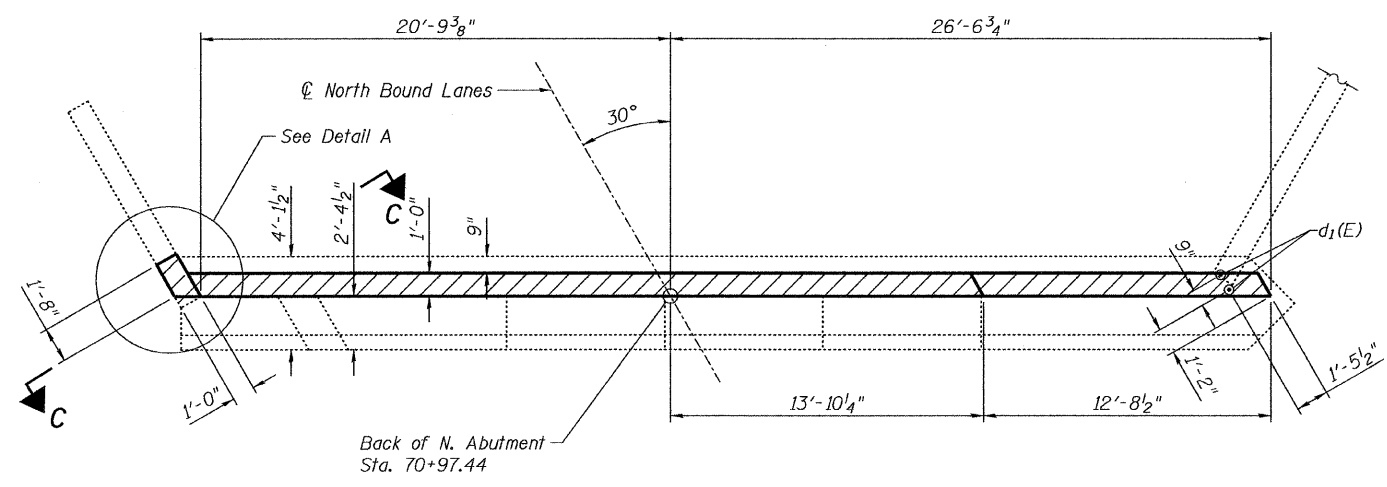


**SECTION B-B**

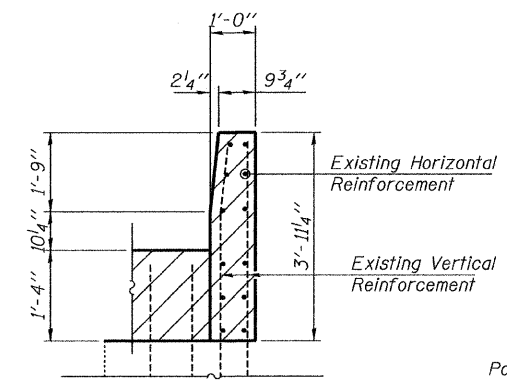
**MIN. BAR LAP**  
#6 bar = 2'-7"

**BILL OF MATERIAL**

Bar	No.	Size	Length	Shape	
h2(E)	6	#6	25'-5"		
Reinforcement Bars, Epoxy Coated				Pound	230

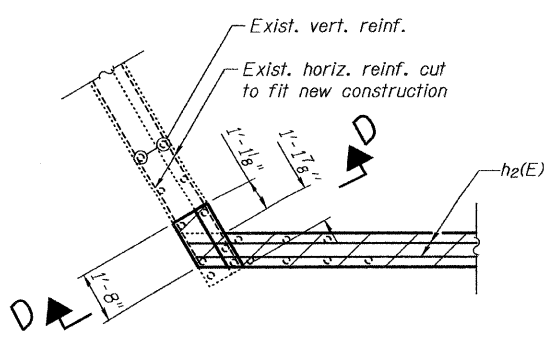


**PLAN**



**SECTION C-C**

**NOTES:**  
Pour hatched area after proposed deck is in place. Match top of hatched area to top of deck. Quantity included with Concrete Superstructure Sheet 4 of 19.  
Bars indicated thus 3x2-#6 h2(E) indicates 3 lines of bars with 2 lengths per line.



**DETAIL A**

PLOT DATE = 11/23/2009  
FILE NAME = \\srm-c099-0001-ar1-15-north-abut-deta11e.dgn  
PLOT SCALE = 450.0000 1/1 / IN.  
USER NAME = CFC.

ILLINOIS DEPARTMENT OF TRANSPORTATION	
SHEET TITLE <b>NORTH ABUTMENT DETAILS</b>	
PROJECT I-55 NB OVER KANKAKEE RIVER FAI ROUTE 55, SECTION BB(B&B-1)BR WILL COUNTY SN 099-0001	PROJECT NO. 03095-16 SCALE DATE 9/23/09 DRAWN BY TFG/CFC CHECKED BY MCB DRAWING NO.
<b>COOMBE-BLOXDORF P.C.</b> Engineers / Land Surveyors Springfield, Illinois Design Firm License No. 184-002703	15 OF 19 SHTS