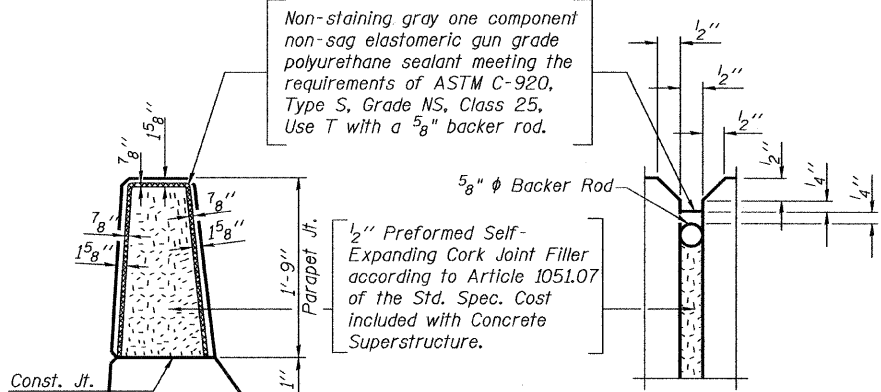
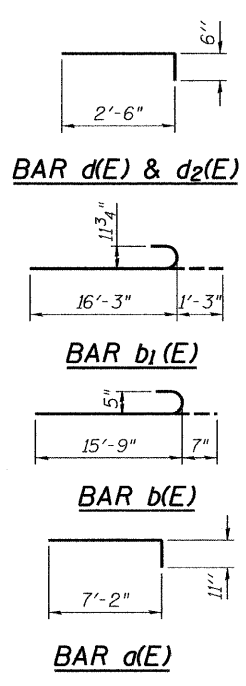


SECTION THRU PARAPET ABOVE STEEL SHEET PILE WALL

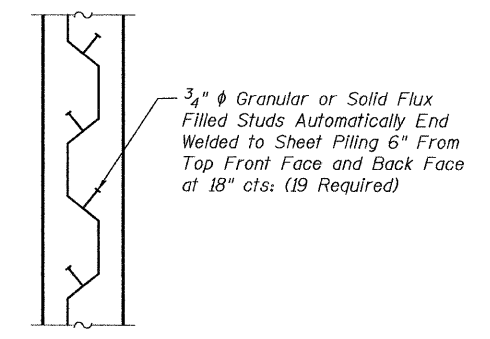
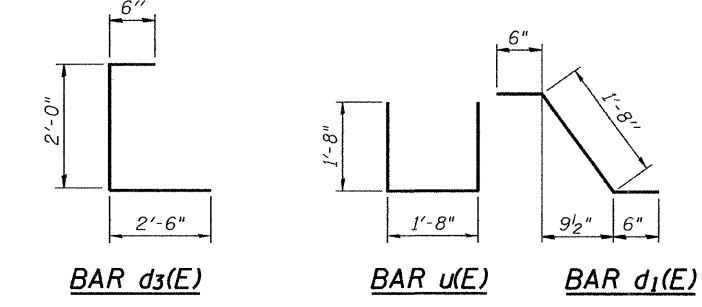
BILL OF MATERIAL

Bar	No.	Size	Length	Shape
d(E)	8	#5	8'-1"	—
a1(E)	28	#5	7'-2"	—
b(E)	16	#5	16'-4"	C
b1(E)	30	#9	17'-6"	C
d(E)	31	#5	3'-0"	—
d1(E)	32	#5	2'-8"	—
d2(E)	31	#4	3'-0"	—
d3(E)	32	#4	5'-0"	—
e(E)	12	#4	14'-4"	—
e1(E)	2	#8	28'-0"	—
e2(E)	2	#5	28'-0"	—
h(E)	12	#5	15'-3"	—
h1(E)	3	#5	7'-8"	—
u(E)	27	#5	5'-0"	—
v(E)	7	#5	5'-8"	—
Concrete Structures			Cu. Yd.	17.3
Reinforcement Bars, Epoxy Coated			Pound	3400
Structure Excavation			Cu. Yd.	10
Permanent Steel Sheet Piling			Sq. Ft.	468
Stud Shear Connectors			Each	19
Protective Coat			Sq. Yd.	12

Bars Indicated Thus 3x2-#5 etc Indicates 3 Lines of Bars with 2 Lengths Per Line.



PARAPET JOINT DETAILS



SECTION A-A MIN BAR LAPS

ILLINOIS DEPARTMENT OF TRANSPORTATION	
SHEET TITLE	
NORTH ABUTMENT WINGWALL DETAILS	
PROJECT	PROJECT NO.
I-55 NB OVER KANKAKEE RIVER	03095-16
FAI ROUTE 55, SECTION 88(B&B-1)BR	SCALE
WILL COUNTY	DATE
SN 099-0001	9/23/09
	DRAWN BY
	TFG/CFC
	CHECKED BY
	MCB
	DRAWING NO.
COOMBE-BLOXDORF P.C.	16
Engineers / Land Surveyors	
Springfield, Illinois	
Design Firm License No. 184-002703	OF 19 SHTS

PLOT DATE = 11/23/2009
 FILE NAME = \\ben-095-001-ah-16-north-abut-wingwall-det.dgn
 PLOT SCALE = 288.0000 1" = 8'
 USER NAME = DFC