

STATE OF ILLINOIS
DEPARTMENT OF TRANSPORTATION
DIVISION OF HIGHWAYS

PLANS FOR PROPOSED
FEDERAL AID HIGHWAY
EAST AVENUE & PINE AVENUE FROM
FOREST AVE. (F.A.U. 1472) TO LONGCOMMON RD. (F.A.U. 3569)
SECTION: 06-00073-00-LS
ROADWAY RESURFACING AND ENHANCEMENT
PROJECT: TE-00D1(705)
VILLAGE OF RIVERSIDE
COOK COUNTY
C-91-030-07

FOR INDEX OF SHEETS, SEE SHEET NO. 2

TRAFFIC DATA

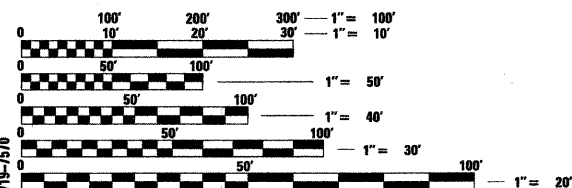
ADT:

EAST AVENUE = 600 (2030)
PINE AVENUE = 600 (2030)

SPEED LIMIT:

EAST & PINE AVENUE = 20 MPH (POSTED)
30 MPH (DESIGN)

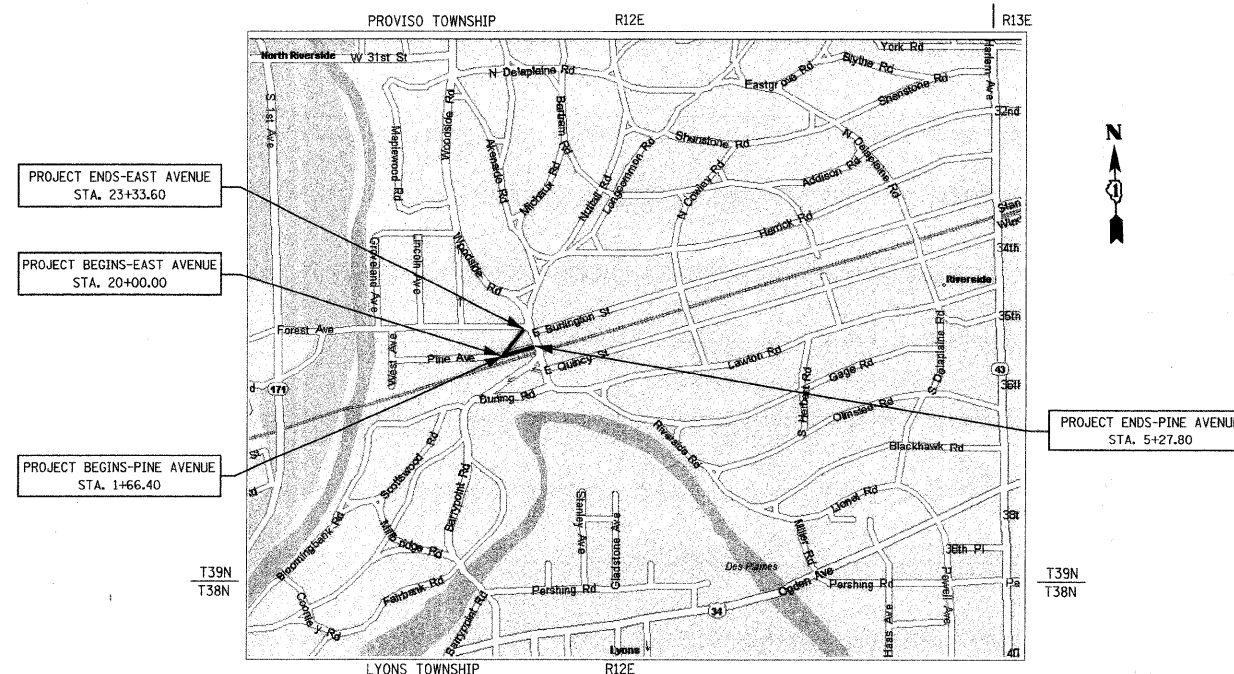
PROJECT LOCATED IN
VILLAGE OF RIVERSIDE



FULL SIZE PLANS HAVE BEEN PREPARED USING STANDARD ENGINEERING SCALES. REDUCED SIZED PLANS WILL NOT CONFORM TO STANDARD SCALES. IN MAKING MEASUREMENTS ON REDUCED PLANS, THE ABOVE SCALES MAY BE USED.

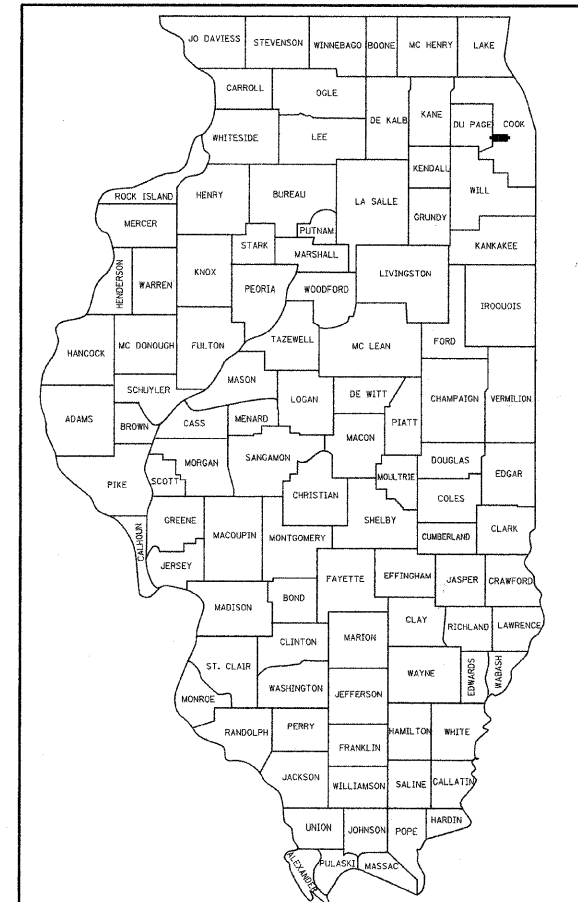
J.U.L.I.E.
JOINT UTILITY LOCATION INFORMATION FOR EXCAVATION
1-800-892-0123

CONTRACT NO. 63133
DESIGN DESIGNATION: LOCAL ROAD



PROVISO TOWNSHIP, SECTION 36
SCALE: NTS
GROSS & NET LENGTH OF PROJECT: 695.00 FT. (0.13 MILES)

F.A.U. RTE.	SECTION	COUNTY	TOTAL SHEETS	SHEET NO.
1472 & 3569	06-00073-00-LS	COOK	24	1
FED. ROAD DIST. NO.	ILLINOIS	FED. AID PROJECT		
CONTRACT NO: 63133				



LOCATION OF SECTION INDICATED THUS: - [black rectangle] -

STATE OF ILLINOIS
DEPARTMENT OF TRANSPORTATION
DIVISION OF HIGHWAYS

Approved: 3-24-09
Kathleen F. Rich
Village of Riverside, Village Manager

Passed: October 27, 2009
Cheryl Christopherson
District #1 Engineer of Local Roads & Streets

Releasing for Bid
Based on Limited Review: OCTOBER 29, 2009
Diana M. O'Keefe
Deputy Director of Highways, Region #1 Engineer

PRINTED BY AUTHORITY OF THE STATE OF ILLINOIS

JJB JAMES J. BENES & ASSOCIATES
CONSULTING ENGINEERS
950 WARRENVILLE ROAD, SUITE 101
LISLE, IL 60532
(630) 719-7570
SIGNATURE: *James J. Benes*
DATE: 3/27/09
REGISTERED PROFESSIONAL ENGINEER
IL LICENSE NO: 062-045055
EXP. DATE: NOVEMBER 30, 2009
FIELD: JAMES J. BENES & ASSOCIATES, INC.
CIVIL ENGINEERING
(SHEETS 1-17)

FIELD ENGINEER: MARILIN SOLOMON (847) 705-4407
CONSULTANT: JAMES J. BENES & ASSOCIATES, INC. (630) 719-7570