
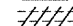





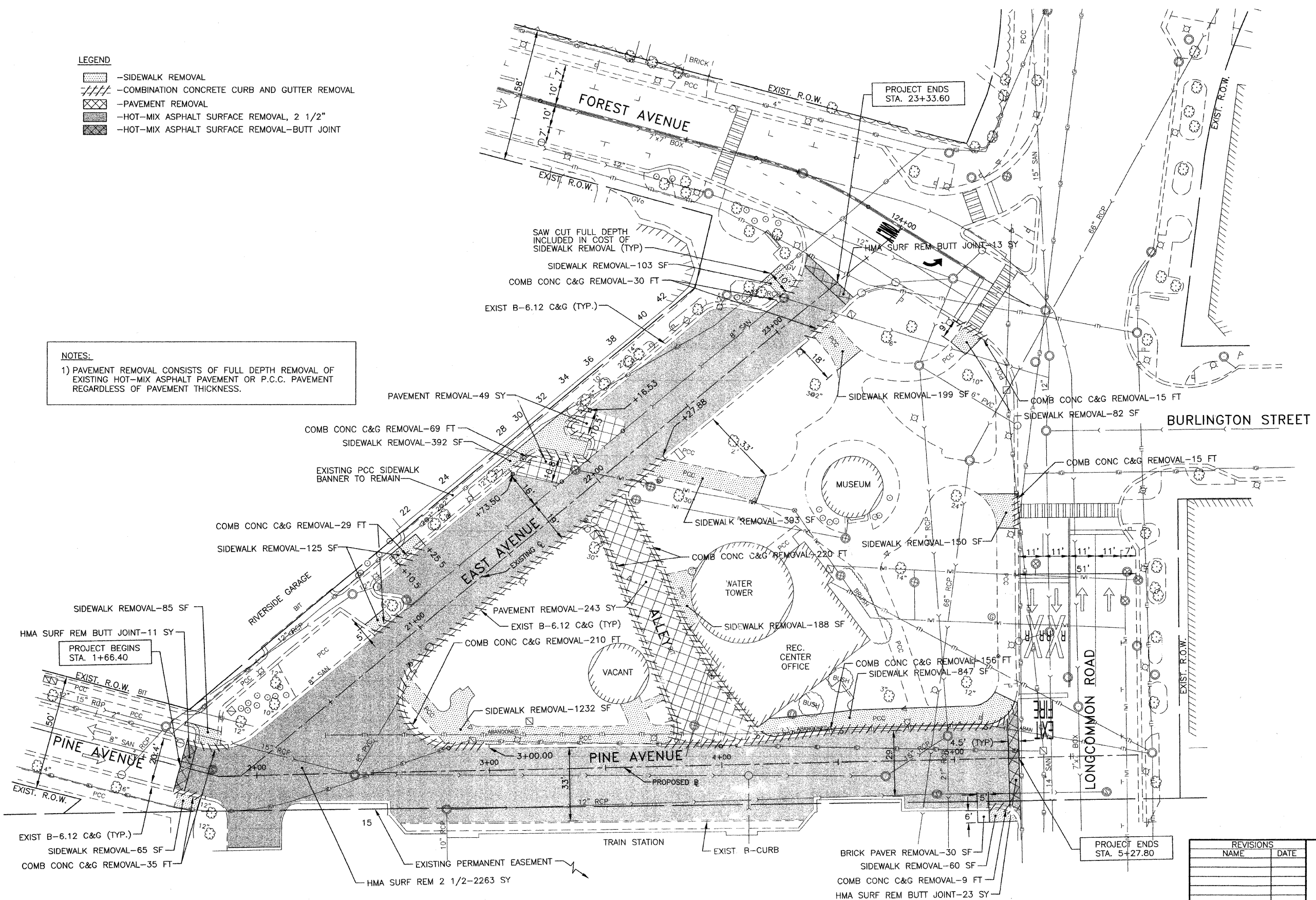
F.A.U. RTE.	SECTION	COUNTY	TOTAL SHEETS	SHEET NO.
14724 3569	06-00073-00-LS	COOK	24	8
STA.	TO STA.			
FED. ROAD DIST. NO.	ILLINOIS	FED. AID PROJECT		
CONTRACT NO. 63133				

LEGEND

-  -SIDEWALK REMOVAL
-  -COMBINATION CONCRETE CURB AND GUTTER REMOVAL
-  -PAVEMENT REMOVAL
-  -HOT-MIX ASPHALT SURFACE REMOVAL, 2 1/2"
-  -HOT-MIX ASPHALT SURFACE REMOVAL-BUTT JOINT

NOTES:

1) PAVEMENT REMOVAL CONSISTS OF FULL DEPTH REMOVAL OF EXISTING HOT-MIX ASPHALT PAVEMENT OR P.C.C. PAVEMENT REGARDLESS OF PAVEMENT THICKNESS.



REVISIONS	
NAME	DATE

ILLINOIS DEPARTMENT OF TRANSPORTATION
FAU ROUTES 1472 & 3569
VILLAGE OF RIVERSIDE
RAILWAY/WATER TOWER CAMPUS RESTORATION PROJECT

SITE PREPARATION PLAN

SCALE: 1"=20'
DATE: 12/01/08
DRAWN BY: SMP
CHECKED BY: BDH