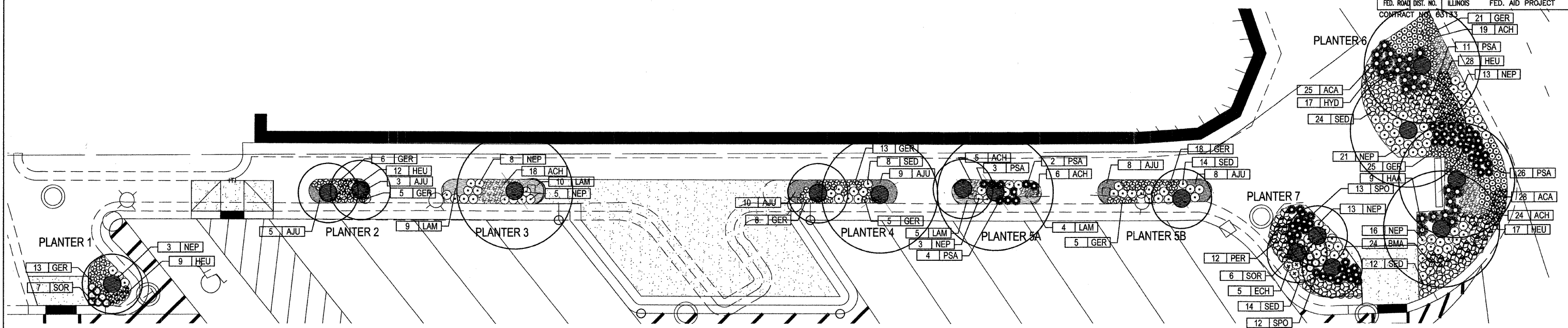
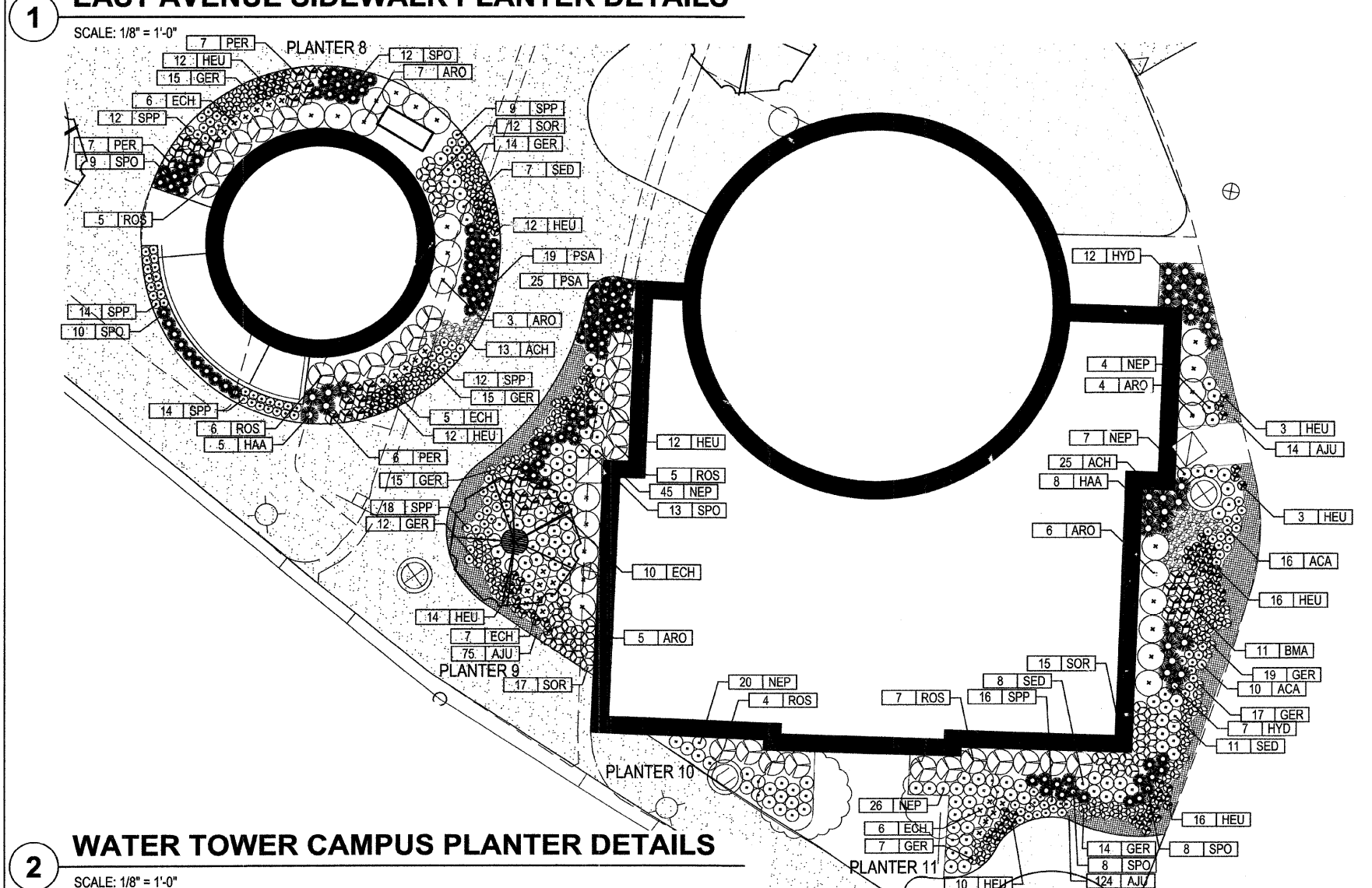


L-2.0

F.A.U. RTE.	SECTION	COUNTY	TOTAL SHEETS	SHEET NO.
4722 3569	06-00073-00-LS	COOK	24	19
STA.	TO STA.			
FED. ROAD DIST. NO.	ILLINOIS	FED. AID PROJECT		
CONTRACT NO. 85133	21 GER	19 ACH		



1 EAST AVENUE SIDEWALK PLANTER DETAILS



2 WATER TOWER CAMPUS PLANTER DETAILS

MASTER SCHEDULE OF PLANTS

Village of Riverside Railway / Water Tower Campus Restoration

Key	Botanical Name	Common Name	Size	Spacing	TOTALS
SHADE TREES					
TAR	Tilia americana 'Redmond'	American Linden	4" cal.	on plans	3
ORNAMENTAL TREES					
CER	Cercis canadensis	Eastern Redbud	8-foot ht.	on plans	3
SHRUBS					
ARO	Aronia melanocarpa 'Iroquois Beauty'	Black Chokeberry	24" B/B	Plant at 36" o.c.	25
ROS	Rosa Radcon	Pink Knockout Rose	24" B/B	Plant at 36" o.c.	27
PERENNIALS AND ORNAMENTAL GRASSES					
ACH	Astilbe chinensis 'Maggie Daley'	Chinese astilbe	1 Gal. pot	Plant at 12" o.c.	113
ACA	Asarum canadense	Wild Ginger	1 Gal. pot	Plant at 12" o.c.	79
AJU	Ajuga reptans 'Bronze Beauty'	Ajuga	1 Qt. pot	Plant at 12" o.c.	256
BMA	Brunnera macrophylla	False Forget-me-not	1 Qt. pot	Plant at 12" o.c.	32
ECH	Echinacea purpurea 'Magnus'	Purple Coneflower	1 Gal. pot	Plant at 18" o.c.	39
GER	Geranium 'Blokovo'	Wild Geranium	1 Qt. pot	Plant at 12" o.c.	246
HEU	Heuchera 'Palace Purple'	Coral Bells	1 Qt. pot	Plant at 12" o.c.	176
HAA	Hydrangea arborescens 'Annabelle'	Annabelle Hydrangea	1 Gal. pot	Plant at 24" o.c.	22
HYD	Hydrangea arborescens 'Oakleaf'	Oakleaf Hydrangea	1 Gal. pot	Plant at 24" o.c.	37
LAM	Lamium maculatum	Deadnettle	1 Qt. pot	Plant at 12" o.c.	28
NEP	Nepeta 'Walkers Low'	Catmint	1 Gal. pot	Plant at 18" o.c.	177
PER	Perovskia atriplicifolia 'Little Spire'	Russian Sage	1 Gal. pot	Plant at 18" o.c.	32
PSA	Pulmonaria saccharata	Lungwort	1 Gal. pot	Plant at 18" o.c.	90
SPP	Salvia pratensis 'Pink Delight'	Salvia	1 Qt. pot	Plant at 12" o.c.	93
SED	Sedum 'Autumn Joy'	Sedum	1 Gal. pot	Plant at 18" o.c.	100
SOR	Sorghastrum nutans 'Sloux Blue'	Indian Grass	1 Gal. pot	Plant at 18" o.c.	57
SPO	Sporobolus heterolepis	Prairie Dropseed	1 Gal. pot	Plant at 18" o.c.	85



DLK
Civic Design
The Fine Arts Building
410 South Michigan Avenue
Chicago, Illinois 60605
Tel. 312.322.0911
Fax 312.322.5324
www.dlkinc.com

REVISIONS	
NAME	DATE

ILLINOIS DEPARTMENT OF TRANSPORTATION
FAU ROUTES 1472 & 3569
VILLAGE OF RIVERSIDE
RAILWAY/WATER TOWER CAMPUS RESTORATION PROJECT
LANDSCAPE PLANTER DETAILS
SCALE: 1/8" = 1'-0"
DATE: 03-27-2009
DRAWN BY: SM
CHECKED BY: JE