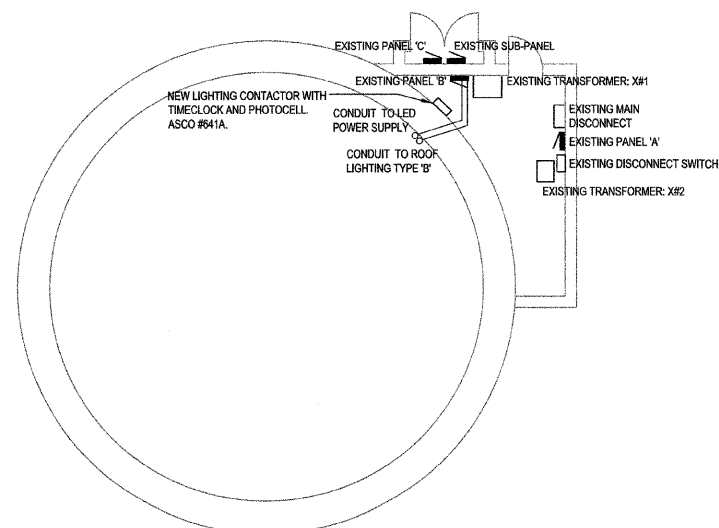
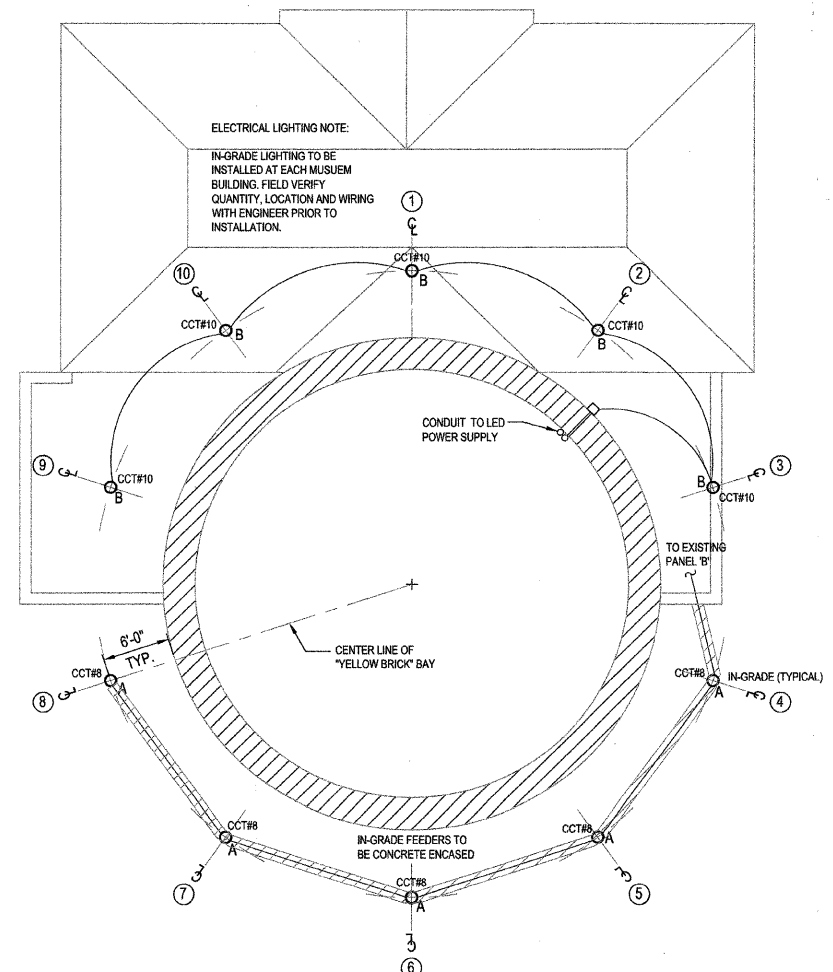


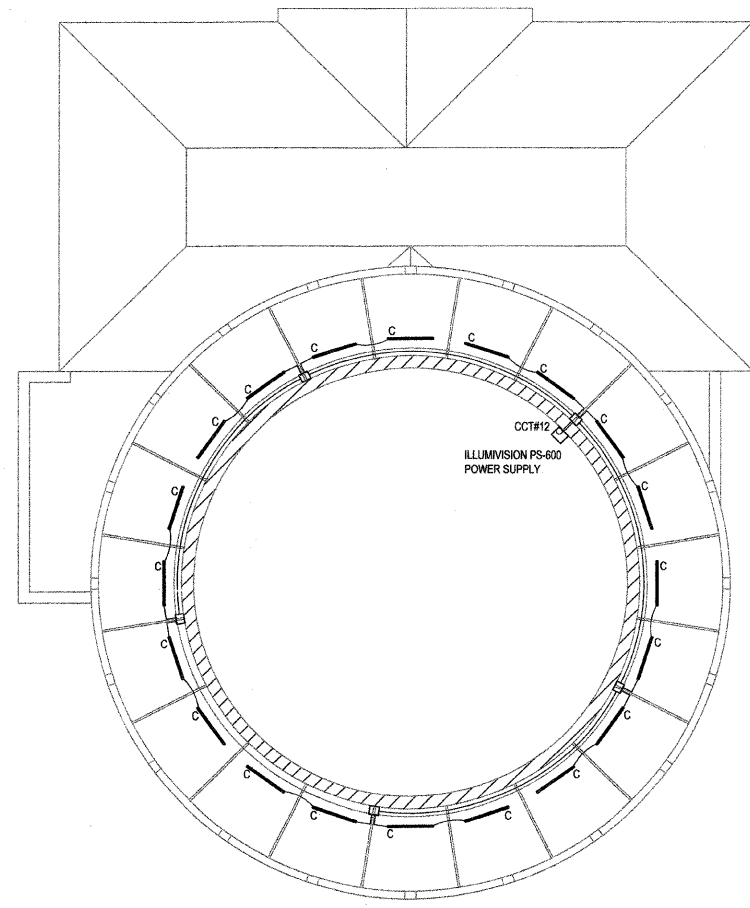
F.A.U. RTE.	SECTION	COUNTY	TOTAL SHEETS	SHEET NO.
1472 & 3569	06-00073-00-LS	COOK	24	23
STA.		TO STA.		
FED. ROAD DIST. NO.	ILLINOIS	FED. AID PROJECT		
CONTRACT NO. 63133				



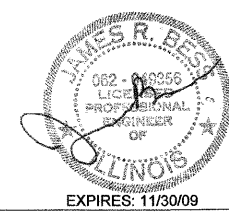
**E1** ELECTRICAL CLOSET PLAN  
 SCALE: 1/4" = 1'-0"



**E2** FIRST FLOOR LIGHTING PLAN  
 SCALE: 1/8" = 1'-0"



**E3** BALCONY LIGHTING PLAN  
 SCALE: 1/4" = 1'-0"



**BES** BUILDING ENGINEERING SYSTEMS, LLC  
 MECHANICAL, ELECTRICAL, PLUMBING AND FIRE PROTECTION ENGINEERING  
 444 N. WELLS STREET  
 SUITE 501  
 CHICAGO, IL 60654  
 T (312) 836-0595  
 F (312) 836-0596  
 www.besengr.com

REVISIONS	
NAME	DATE
ISSUE FOR PERMIT	02.06.09

ILLINOIS DEPARTMENT OF TRANSPORTATION  
 FAU ROUTES 1472 & 3569  
 VILLAGE OF RIVERSIDE  
 RAILWAY/WATER TOWER CAMPUS RESTORATION PROJECT  
**ELECTRICAL POWER AND LIGHTING PLANS**  
 SCALE: AS NOTED  
 DATE: FEBRUARY 6, 2009  
 DRAWN BY:  
 CHECKED BY: