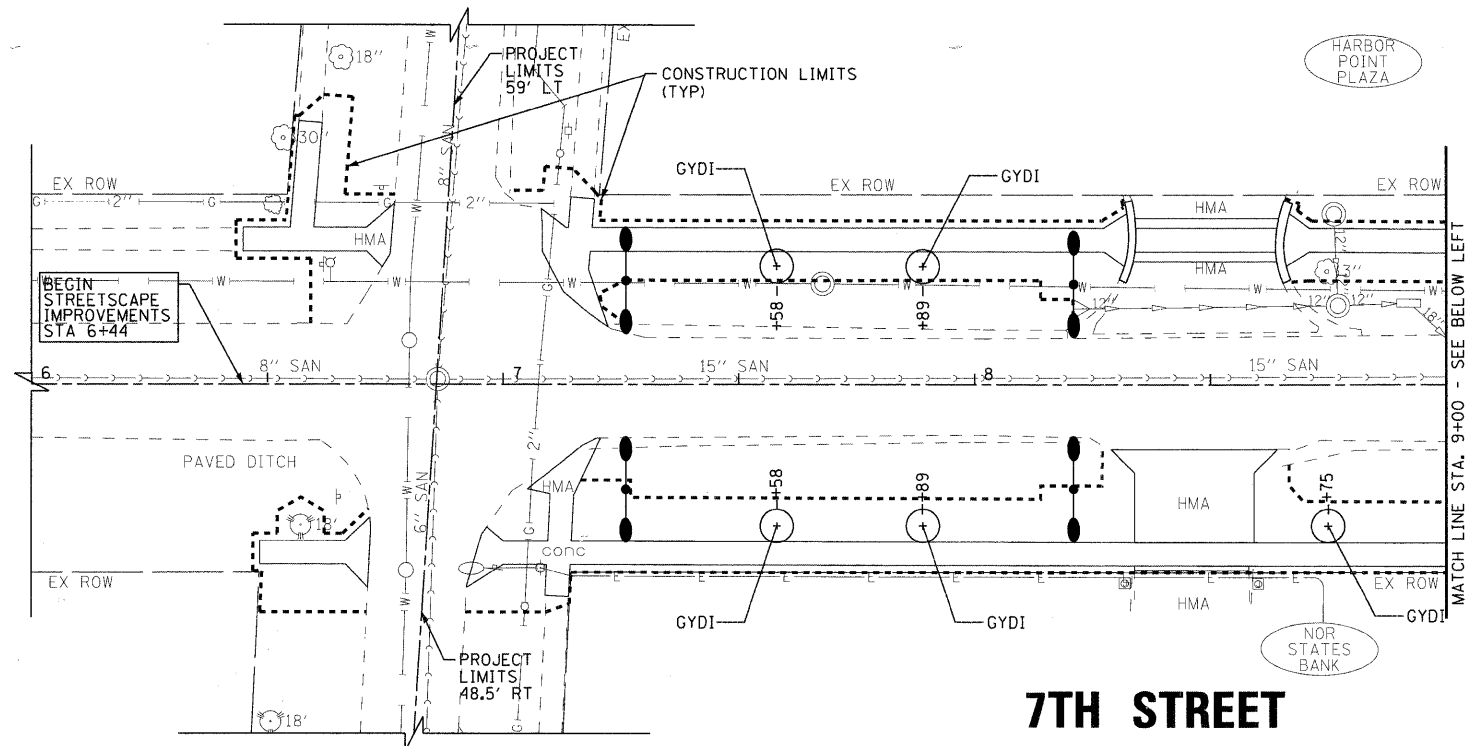


WHITNEY AVENUE

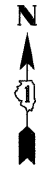
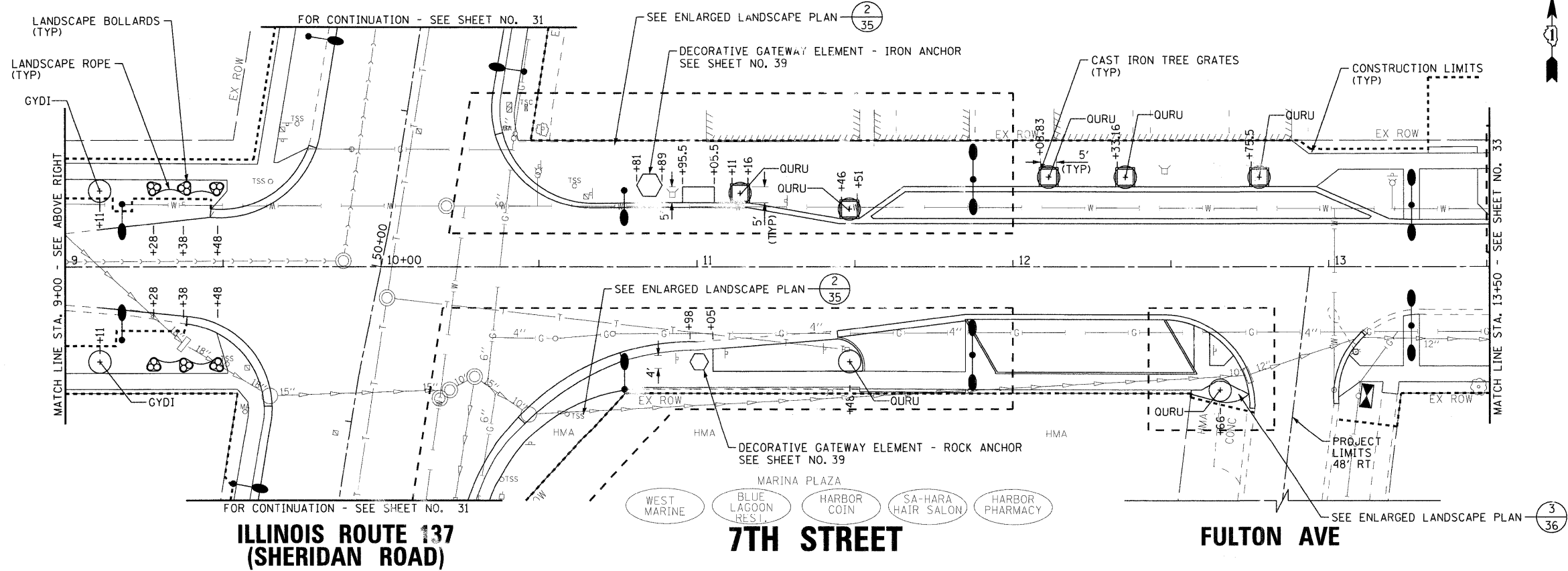


SCHEDULE OF TREES

PAY ITEM	ABBREV.	QTY. (EA)
TREE, GYMNOCLADUS DIOICUS (KENTUCKY COFFEE TREE), 2 1/2" CALIPER, BALLED AND BURLAPPED	GYDI	7
TREE, QUERCUS RUBRA (RED OAK), 3" CALIPER, BALLED AND BURLAPPED	OURU	7

7TH STREET

WHITNEY AVENUE



ILLINOIS ROUTE 137 (SHERIDAN ROAD)

7TH STREET

FULTON AVE

COPYRIGHT © 2009 BY BAXTER & WOODMAN, INC.
 STATE OF ILLINOIS - PROFESSIONAL DESIGN FIRM
 LICENSE NO. 184-000291 - EXPIRES 4/30/2011
 4/26/2009 4:02:46 PM \\winthrp\060807\060807-landscape-1.sht



DESIGNED - MWP	REVISED - IDOT REVIEW 2/19/09
DRAWN - CJC	REVISED - IDOT REVIEW 4/22/09
CHECKED - MDW	REVISED -
DATE - 8-1-08	FILE - 060807-landscape-1.sht

**VILLAGE OF WINTHROP HARBOR, ILLINOIS
ILLINOIS ROUTE 137 (SHERIDAN ROAD) AND 7th STREET
STREETSCAPE IMPROVEMENTS**

**LANDSCAPING PLAN
7TH STREET**

SCALE: 1" = 20'

STA. 6+00 TO STA. 13+50

F.A.P. RTE.	SECTION	COUNTY	TOTAL SHEETS	SHEET NO.
*	06-00036-00-LS	LAKE	70	32
FED. ROAD DIST. NO. 1			CONTRACT NO. 63167	
JOB NO. C-91-197-10			ILLINOIS FED. AID PROJECT ARA-0001(810)	

* F.A.P. 352 ILLINOIS ROUTE 137 (SHERIDAN ROAD)