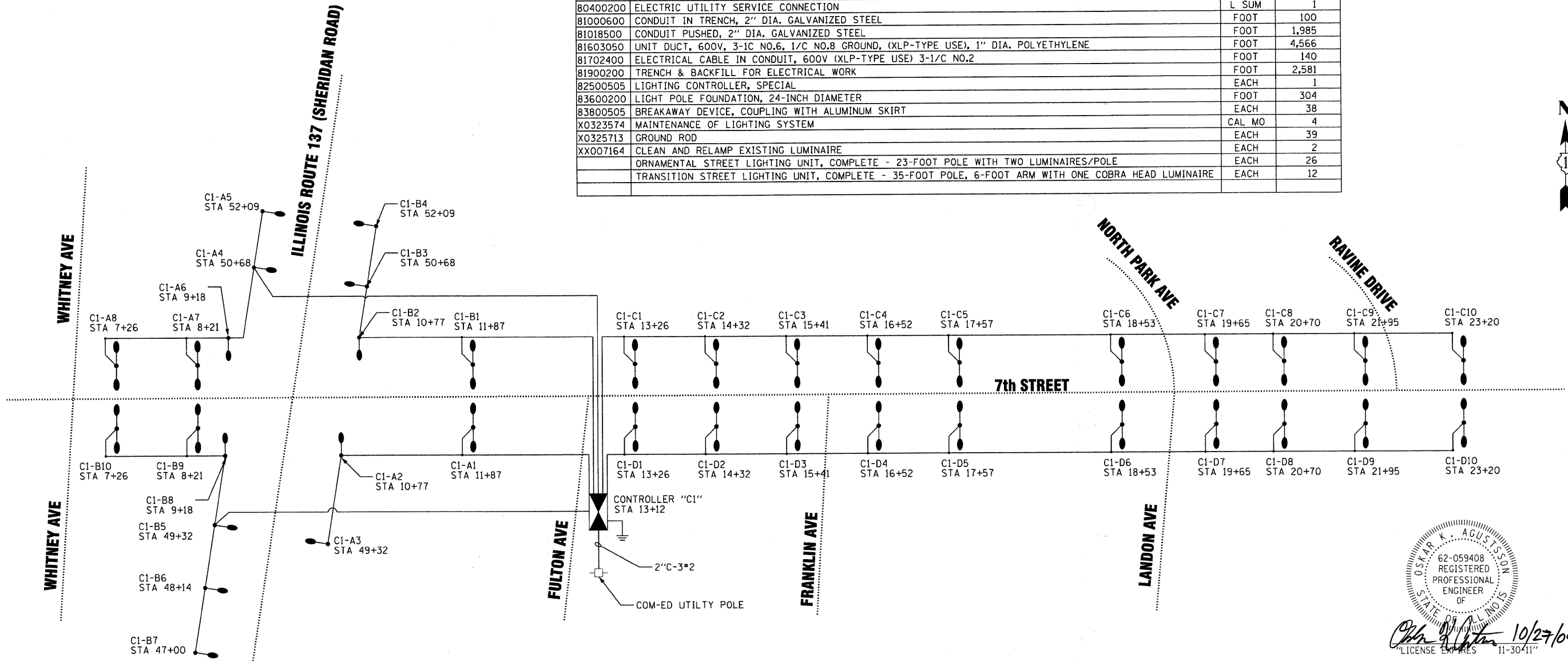


SUMMARY OF QUANTITIES

PAY ITEM	ITEM	UNIT	QUANTITY
80400100	ELECTRIC SERVICE INSTALLATION	EACH	1
80400200	ELECTRIC UTILITY SERVICE CONNECTION	L SUM	1
81000600	CONDUIT IN TRENCH, 2" DIA. GALVANIZED STEEL	FOOT	100
81018500	CONDUIT PUSHED, 2" DIA. GALVANIZED STEEL	FOOT	1,985
81603050	UNIT DUCT, 600V, 3-1C NO.6, 1/C NO.8 GROUND, (XLP-TYPE USE), 1" DIA. POLYETHYLENE	FOOT	4,566
81702400	ELECTRICAL CABLE IN CONDUIT, 600V (XLP-TYPE USE) 3-1/C NO.2	FOOT	140
81900200	TRENCH & BACKFILL FOR ELECTRICAL WORK	FOOT	2,581
82500505	LIGHTING CONTROLLER, SPECIAL	EACH	1
83600200	LIGHT POLE FOUNDATION, 24-INCH DIAMETER	FOOT	304
83800505	BREAKAWAY DEVICE, COUPLING WITH ALUMINUM SKIRT	EACH	38
X0323574	MAINTENANCE OF LIGHTING SYSTEM	CAL MO	4
X0325713	GROUND ROD	EACH	39
XX007164	CLEAN AND RELAMP EXISTING LUMINAIRE	EACH	2
	ORNAMENTAL STREET LIGHTING UNIT, COMPLETE - 23-FOOT POLE WITH TWO LUMINAIRES/POLE	EACH	26
	TRANSITION STREET LIGHTING UNIT, COMPLETE - 35-FOOT POLE, 6-FOOT ARM WITH ONE COBRA HEAD LUMINAIRE	EACH	12



LOAD TABULATIONS FOR LIGHTING CONTROLLER C1

CIRCUIT	(2) 50 WATT	150 WATT	FESTOON		AMPS
			R	B	
A	(3) 0.60 AMPS	(5) 0.80 AMPS	(1) 1.5 AMPS	(2) 1.5 AMPS	8.8 AMPS
B	(3) 0.60 AMPS	(7) 0.80 AMPS	(2) 1.5 AMPS	(1) 1.5 AMPS	9.4 AMPS
C	(10) 0.60 AMPS		(5) 1.5 AMPS	(5) 1.5 AMPS	13.5 AMPS
D	(10) 0.60 AMPS		(5) 1.5 AMPS	(5) 1.5 AMPS	13.5 AMPS
TOTAL					45.2 AMPS

NOTE: ALL LIGHTING UNITS ON THIS CONTROLLER ARE 240 VAC.

LEGEND

- 240V, M-C-III LUMINAIRE, DUAL-FIXTURE, 50 WATT MH
- 150 WATT PMH, 240V, M-C-II LUMINAIRE
- 1" UNIT DUCT
W/3-1/2" #6 AND
1" #8 GROUND (OR AS INDICATED)
- LIGHTING CONTROLLER

NOTE: SEE STREET LIGHTING PLAN SHEETS FOR ROTATION & LOCATION OF EACH LUMINAIRE



Oskar K. Augustsson 10/27/09
LICENSE EXPIRES 11-30-11

COPYRIGHT © 2009 BY BAXTER & WOODMAN, INC.
 STATE OF ILLINOIS - PROFESSIONAL DESIGN FIRM
 LICENSE NO. 184-00121 - EXPIRES 4/30/2011
 522506 PM 10/27/2009



DESIGNED - MWH	REVISED - IDOT REVIEW 2/19/09
DRAWN - MAC	REVISED - IDOT REVIEW 4/22/09
CHECKED - JTB	REVISED - IDOT REVIEW 10/27/09
DATE - 8-1-08	FILE - 060807-lighting-dfagr.am.shf

VILLAGE OF WINTHROP HARBOR, ILLINOIS
 ILLINOIS ROUTE 137 (SHERIDAN ROAD) AND 7th STREET
 STREETScape IMPROVEMENTS

STREET LIGHTING - SINGLE LINE DIAGRAM

SCALE: NONE

STA. TO STA.

F.A.P. RTE.	SECTION	COUNTY	TOTAL SHEETS	SHEET NO.
	06-00036-00-LS	LAKE	70	42
FED. ROAD DIST. NO. 1			CONTRACT NO. 63167	
JOB NO. C-91-197-10		ILLINOIS FED. AID PROJECT ARA-0001810		

F.A.P. 352 ILLINOIS ROUTE 137 (SHERIDAN ROAD)