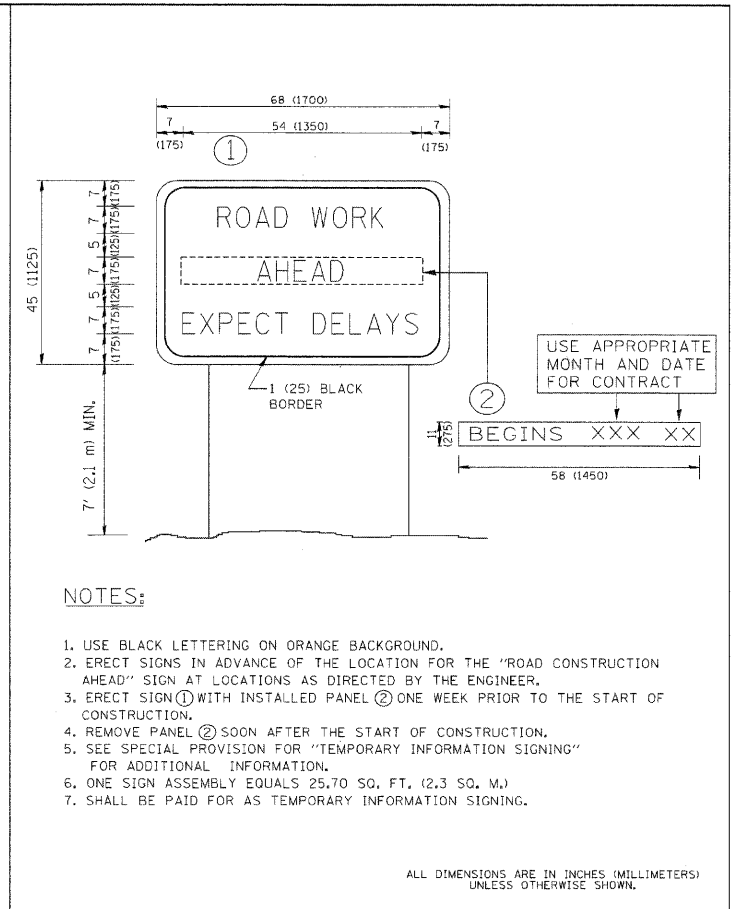
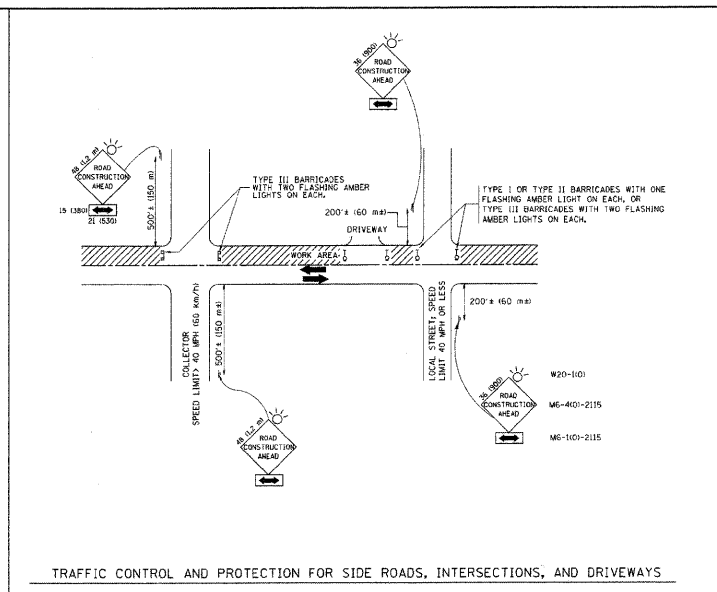


CITY OF DES PLAINES DRIVEWAY APPROACH DETAILS



- NOTES:
1. USE BLACK LETTERING ON ORANGE BACKGROUND.
 2. ERECT SIGNS IN ADVANCE OF THE LOCATION FOR THE "ROAD CONSTRUCTION AHEAD" SIGN AT LOCATIONS AS DIRECTED BY THE ENGINEER.
 3. ERECT SIGN ① WITH INSTALLED PANEL ② ONE WEEK PRIOR TO THE START OF CONSTRUCTION.
 4. REMOVE PANEL ② SOON AFTER THE START OF CONSTRUCTION.
 5. SEE SPECIAL PROVISION FOR "TEMPORARY INFORMATION SIGNING" FOR ADDITIONAL INFORMATION.
 6. ONE SIGN ASSEMBLY EQUALS 25.70 SQ. FT. (2.3 SQ. M.)
 7. SHALL BE PAID FOR AS TEMPORARY INFORMATION SIGNING.

ALL DIMENSIONS ARE IN INCHES (MILLIMETERS) UNLESS OTHERWISE SHOWN.



- NOTES:
1. SIDE ROAD WITH A SPEED LIMIT OF 40 MPH (64 KM/H) OR LESS AS SHOWN ON THE DRAWING AND AS DIRECTED BY THE ENGINEER.
 - a) ONE ROAD CONSTRUCTION AHEAD SIGN 36" x 36" (915 x 915) WITH A FLASHER AND FLAG MOUNTED ON IT APPROXIMATELY 200' (61) IN ADVANCE OF THE MAIN ROUTE.
 - b) THE CLOSED PORTION OF THE MAIN ROUTE SHALL BE PROTECTED BY BLOTTING WITH TYPE II OR TYPE III BARRICADES, 1/2 OF THE CROSS SECTION OF THE CLOSED PORTION.
 2. SIDE ROAD WITH A SPEED LIMIT GREATER THAN 40 MPH (64 KM/H) AS SHOWN ON THE DRAWING AND AS DIRECTED BY THE ENGINEER.
 - a) ONE ROAD CONSTRUCTION AHEAD SIGN 48" x 48" (1219 x 1219) WITH A FLASHER MOUNTED ON IT APPROXIMATELY 200' (61) IN ADVANCE OF THE MAIN ROUTE.
 - b) THE CLOSED PORTION OF THE MAIN ROUTE SHALL BE PROTECTED BY BLOTTING WITH TYPE III BARRICADES, 1/2 OF THE CROSS SECTION OF THE CLOSED PORTION.
 3. WHEN THE SIDE ROAD LIES BETWEEN THE BEGINNING OF THE MAINLINE SIGNING AND THE WORK ZONE, A SINGLE HEADED ARROW (M-1) SHALL BE USED IN LIEU OF THE DOUBLE HEADED ARROW (M-4).

DESIGNED	REVISION	DATE
LHA	J. DIEBLE	01-20-09
	A. HOUSE	05-26-09
	A. HOUSE	10-26-09
	T. RAMMACHER	01-08-10

DESIGNED	REVISION	DATE
LHA	J. DIEBLE	01-20-09
	A. HOUSE	05-26-09
	A. HOUSE	10-26-09
	T. RAMMACHER	01-08-10

FILE NAME =	USER NAME = #USER#	DESIGNED -	REVISION -	F.A. R.T.E.	SECTION	COUNTY	TOTAL SHEETS	SHEET NO.
#FILE#		CHECKED -	REVISION -	3514	09-0209-00-SW	COOK	11	10
		DRAWN -	REVISION -	CONTRACT NO. 63276				
		PLLOT SCALE = #SCALE#	REVISION -	FED. ROAD DIST. NO. 1 ILLINOIS FED. AID PROJECT				
		PLLOT DATE = #DATE#	REVISION -	SCALE: SHEET NO. 10 OF 11 SHEETS STA. TO STA.				