

MATCHLINE STA. 115+00

MATCHLINE STA. 130+00

MATCHLINE STA. 145+00

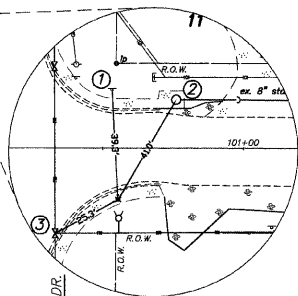
MATCHLINE STA. 115+00

MATCHLINE STA. 130+00

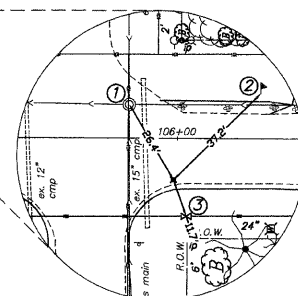
MATCHLINE STA. 145+00

STATION 100+00
BEGINNING OF
IMPROVEMENTS

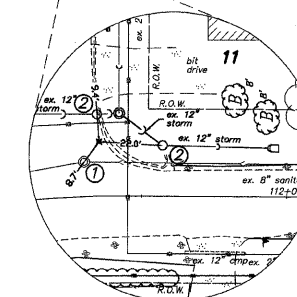
SET PK
STA. 100+55, 18.27'RT
1. SIGN
2. CATCH BASIN
3. WATER VALVE



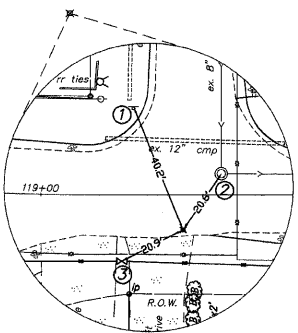
SET PK
STA. 105+99, 12.47'RT
1. SANITARY MH
2. MAIL BOX
3. WATER VALVE



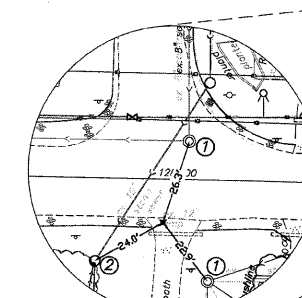
SET PK
STA. 111+36, 18.69'LT
1. SANITARY MH
2. CATCH BASIN



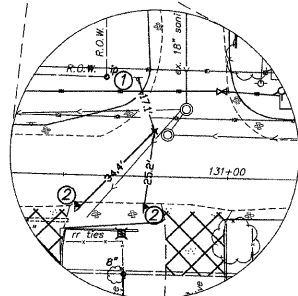
SET PK
STA. 119+43, 10.55'RT
1. SIGN
2. SANITARY MH
3. WATER VALVE



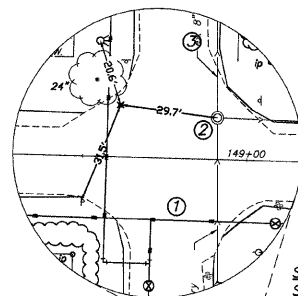
SET PK
STA. 127+96, 13.40'RT
1. SANITARY MH
2. CATCH BASIN



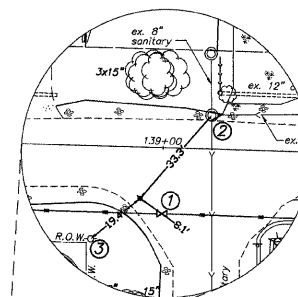
SET PK
STA. 130+77, 13.82'RT
1. SIGN
2. MAIL BOX



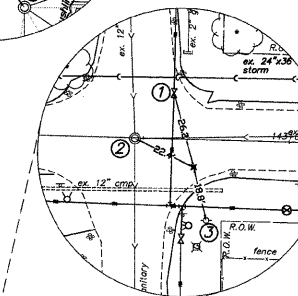
SET CROSS
STA. 135+76, 22.40'RT
1. WATER VALVE
2. CATCH BASIN



SET PK
STA. 138+93, 15.41'RT
1. WATER VALVE
2. SANITARY MH
3. POWER POLE



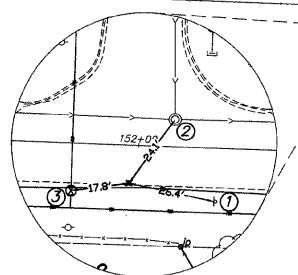
SET PK
STA. 142+68, 9.46'RT
1. WATER VALVE
2. SANITARY MH
3. POWER POLE



SET PK
STA. 148+61, 15.72'LT
1. SIGN
2. SANITARY MH
3. FIRE HYDRANT

OAKWOOD DRIVE

SET PK
STA. 151+97, 11.44'RT
1. SIGN
2. SANITARY MH
3. WATER VALVE VAULT



STATION 154+15
END OF
IMPROVEMENTS

- BENCHMARKS**
- A. SET PK LOCATED AT THE NORTHEAST CORNER OF OAKWOOD DRIVE AND CHEROKEE DRIVE. ELEV=766.35
 - B. SET PK LOCATED AT THE NORTHWEST CORNER OF OAKWOOD DRIVE AND MAPLE STREET. ELEV=748.84
 - C. SET PK LOCATED AT THE NORTHEAST CORNER OF OAKWOOD DRIVE AND IDLEWILD DRIVE. ELEV=755.53
 - D. SET PK LOCATED AT THE NORTHEAST CORNER OF OAKWOOD DRIVE AND HAWTHORNE DRIVE. ELEV= 765.47

FILE NAME = 10258803A.DWG

USER NAME =	DESIGNED -- RJD	REVISED --
FILE NAME =	DRAWN -- EC	REVISED --
PLOT SCALE =	CHECKED -- RJD	REVISED --
PLOT DATE =	DATE -- 10/02/09	REVISED --

STATE OF ILLINOIS
DEPARTMENT OF TRANSPORTATION

OAKWOOD DRIVE
ALIGNMENT AND TIES

SCALE: N.T.S. SHEET NO. 4 OF 73 SHEETS

F.A. RTE.	SECTION	COUNTY	TOTAL SHEETS	SHEET NO.
---	08-00062-00-SW	LAKE	73	4
			CONTRACT NO. 63280	
ILLINOIS FED. AID PROJECT				