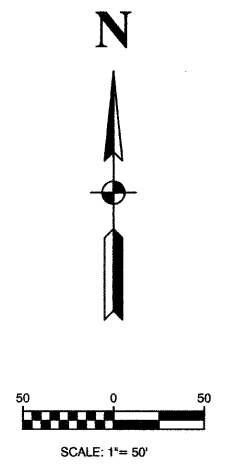
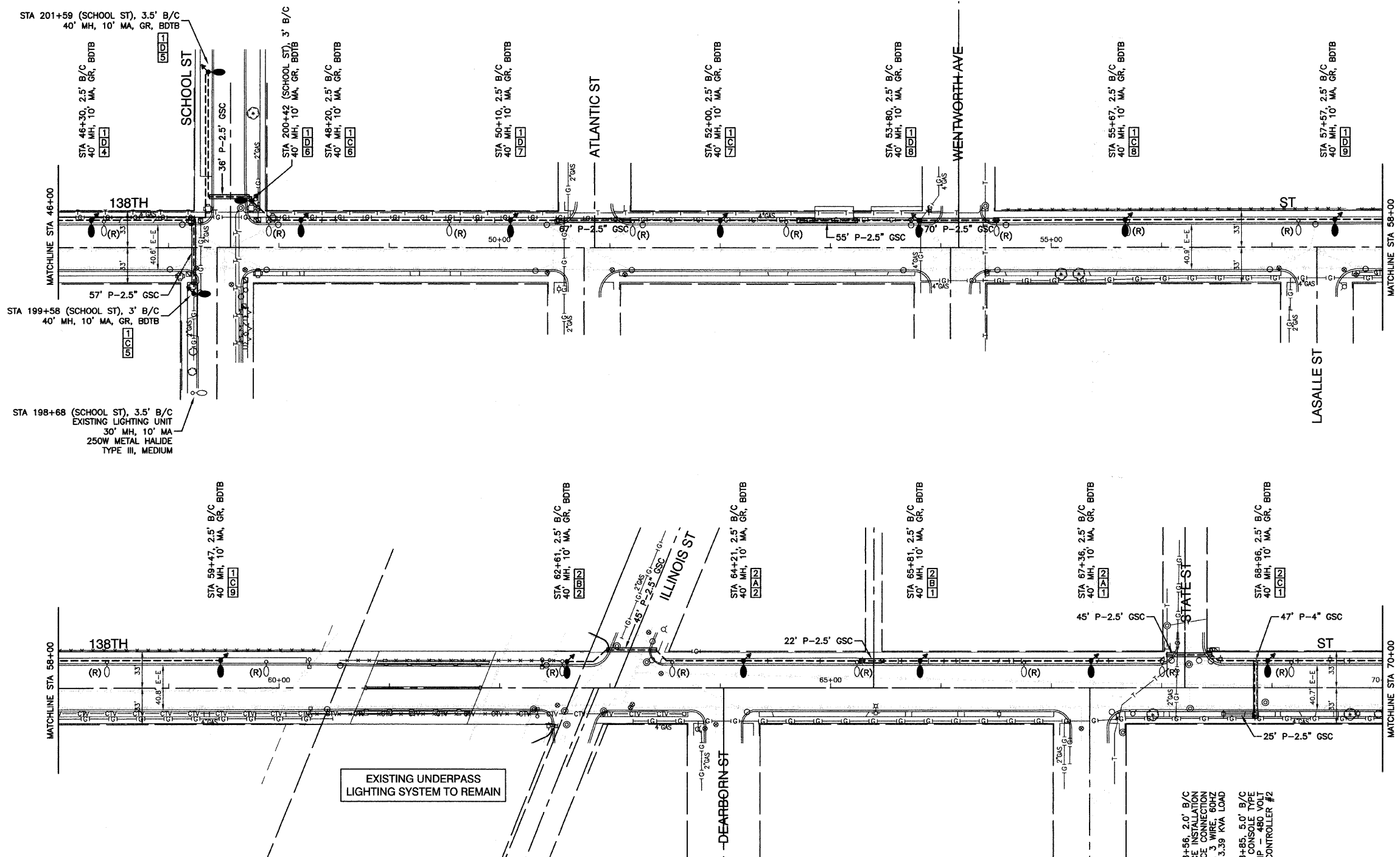


PLAN	REVISIONS	DATE
NO.	BY	
NOTE BOOK	DESIGNED	
ALIGNED	CHECKED	
CADD FILE NAME	PLOTTED	

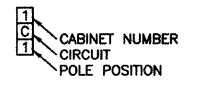
PROFILE	REVISIONS	DATE
NO.	BY	
NOTE BOOK	DESIGNED	
GRADES	CHECKED	
BAL. NOTED	PLOTTED	



EXISTING UNDERPASS
LIGHTING SYSTEM TO REMAIN

- LEGEND:**
- EXISTING STREET LIGHT-250W HPS
 - PROPOSED STREET LIGHT-400W HPS
 - PROPOSED STREET LIGHT-250W HPS
 - EXISTING CONTROLLER
 - PROPOSED CONTROLLER, CONSOLE TYPE
 - COMED POWER POLE FOR SERVICE CONNECTION
 - - - CONDUIT, PUSHED, GALVANIZED STEEL
 - - - CONDUIT, TRENCHED, GALVANIZED STEEL
 - - - UNIT DUCT, 600V, 3-1C NO.4, 1/C NO.6 GROUND, (XLP-TYPE USE), 1-1/4" DIA., POLYETHYLENE
 - - - ELECTRIC CABLE IN CONDUIT, 600V (XLP-TYPE USE) 3-1/C NO. 1/0
 - GR GROUND ROD, 5/8" DIA. x 10'
 - (R) REMOVAL OF EXISTING STREET LIGHT (NO SALVAGE)
 - (RO) REMOVAL OF EXISTING STREET LIGHT (BY OTHERS)
 - LT LEFT
 - RT RIGHT
 - MH MOUNTING HEIGHT
 - MA MAST ARM
 - B/C BACK OF CURB
 - B/EP BEHIND EDGE OF PAVEMENT
 - BDTB BREAKAWAY DEVICE, TRANSFORMER BASE, 15" BOLT CIRCLE

POLE IDENTIFICATION



STA 68+56, 2.0' B/C
ELECTRIC SERVICE CONNECTION
ELECTRIC SERVICE CONNECTION
240/480VOLT, 1 PHASE, 3 WIRE, 60HZ
3.39 KVA LOAD

STA 68+85, 5.0' B/C
LIGHTING CONTROLLER, CONSOLE TYPE
60 AMP - 480 VOLT
CONTROLLER #2

FILE NAME = 09309-PLAN-01 - IDOT P03

USER NAME =	DESIGNED - DWS	REVISED -
	CHECKED - EJT	REVISED -
PLOT SCALE = 1"=50'	DRAWN - MJD	REVISED -
PLOT DATE = 10-15-09	CHECKED - PAP	REVISED -

STATE OF ILLINOIS
DEPARTMENT OF TRANSPORTATION

138TH STREET STREET LIGHTING PLAN SHEET	
SCALE: 1"=50'	SHEET NO. 5 OF 12 SHEETS
STA. 46+00	TO STA. 70+00

F.A.U. RTE.	SECTION	COUNTY	TOTAL SHEETS	SHEET NO.
1597	09-00119-00-LT	COOK	12	5
CONTRACT NO. 63287				
FED. ROAD DIST. NO. 1 ILLINOIS FED. AID PROJECT ARA - 9003 (334)				

