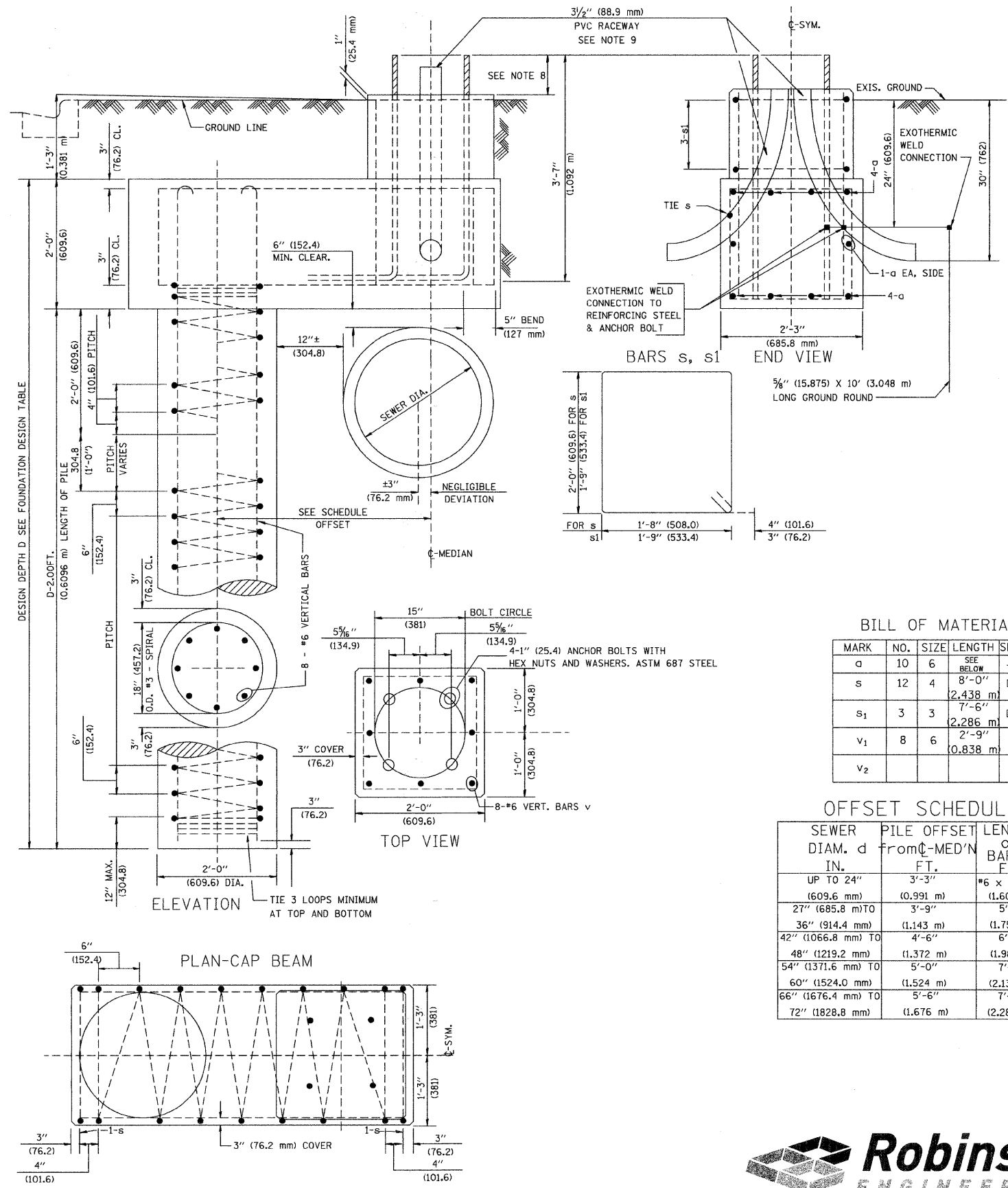


FOUNDATION DESIGN TABLE

TYPE OF SOIL	DESIGN DEPTH OF FOUNDATION		REINFORCEMENT IN FOUNDATION			
	SINGLE ARM D	TWIN ARM D	SINGLE ARM		TWIN ARM	
			VERT BARS	SPIRAL	VERT BARS	SPIRAL
SOFT CLAY	13'-0" (3.962 m)	15'-0" (4.572 m)	8-#6X12'-6" (3.810 m)	#3X122' (37.186 m)	8-#6X14'-3" (4.343 m)	#3X141' (42.977 m)
MEDIUM CLAY	9'-6" (2.896 m)	10'-9" (3.277 m)	8-#6X9'-0" (2.743 m)	#3X90' (27.432 m)	8-#6X10'-0" (3.048 m)	#3X100' (30.480 m)
<b>STIFF CLAY</b>	<b>7'-0" (2.134 m)</b>	<b>8'-0" (2.438 m)</b>	<b>8-#6X6'-6" (1.981 m)</b>	<b>#3X66' (20.112 m)</b>	<b>8-#6X7'-6" (2.286 m)</b>	<b>#3X76' (23.165 m)</b>
LOOSE SAND	9'-0" (2.743 m)	10'-0" (3.048 m)	8-#6X8'-6" (2.591 m)	#3X85' (25.908 m)	8-#6X9'-6" (2.896 m)	#3X94' (28.651 m)
MEDIUM SAND	8'-3" (2.515 m)	9'-0" (2.743 m)	8-#6X8'-0" (2.438 m)	#3X78' (23.774 m)	8-#6X8'-6" (2.591 m)	#3X85' (25.908 m)
DENSE SAND	7'-9" (2.362 m)	9'-0" (2.743 m)	8-#6X7'-6" (2.286 m)	#3X73' (22.250 m)	8-#6X8'-6" (2.591 m)	#3X85' (25.908 m)
ROCK OR SOLIDIFIED SLAG	5'-0" (1.524 m)	5'-0" (1.524 m)	NONE	NONE	NONE	NONE

NOTES

- ALL DIMENSIONS ARE IN INCHES (MILLIMETERS) UNLESS OTHERWISE SHOWN.
- THE ENGINEER SHALL DETERMINE THE CLASS OF SOIL DURING EXCAVATION AND SELECT THE DESIGN DEPTH OF FOUNDATION FROM THE DESIGN TABLE.
- EXCAVATION OF THE POLE FOUNDATION SHALL BE MADE WITH AN AUGER, 24" (609.6 mm) OR 30" (762.0 mm) IN DIAMETER.
- THE ANCHOR ROD SHALL BE A HOOK ROD TYPE. COLD BENDING OF THE ANCHOR ROD WILL NOT BE ALLOWED. THE RADIUS OF THE HOOK BEND SHALL NOT BE LESS THAN 4 TIMES THE NOMINAL DIAMETER OF THE ANCHOR ROD. A TACK WELDED ANCHOR ROD MAY BE SUBSTITUTED WITH THE APPROVAL OF THE ENGINEER.
- THE ANCHOR BOLTS AND RACEWAYS SHALL BE PROPERLY SECURED IN PLACE BEFORE THE CONCRETE IS PLACED IN THE FORM.
- THE ANCHOR RODS SHALL BE ACCORDING TO ASTM F1554 GRADE 725 (GRADE 105). NUTS SHALL BE HEXAGON NUTS ACCORDING TO ASTM A 194 2H OR ASTM A 563 DH, AND WASHERS SHALL BE ACCORDING TO ASTM F 436.
- THE CONTRACTOR SHALL COORDINATE EXTENSION OF ANCHOR BOLTS ABOVE TOP OF FOUNDATION WITH THE BREAKAWAY DEVICE MANUFACTURER'S REQUIREMENTS. IF LIGHT POLE IS MOUNTED WITHOUT BREAKAWAY DEVICE, ANCHOR BOLTS SHALL PROJECT 2 3/4" (69.9 mm) ABOVE TOP OF THE FOUNDATION. THE CONTRACTOR SHALL CONFIRM ANCHOR BOLT EXTENTION WITH ENGINEER.
- RACEWAYS SHALL PROJECT 1" (25.4 mm) ABOVE THE TOP OF THE FOUNDATION.
- THE CABLE TRENCH SHALL BE BACKFILLED AND FIRMLY COMPACTED BEFORE THE LIGHT IS ERCTED.



BILL OF MATERIAL

MARK	NO.	SIZE	LENGTH	SHAPE
a	10	6	SEE BELOW	—
s	12	4	8'-0" (2.438 m)	□
s <sub>1</sub>	3	3	7'-6" (2.286 m)	□
v <sub>1</sub>	8	6	2'-9" (0.838 m)	—
v <sub>2</sub>				

OFFSET SCHEDULE

SEWER DIAM. d IN.	PILE OFFSET from C-MED'N FT.	LENGTH of BAR a FT.
UP TO 24" (609.6 mm)	3'-3" (0.991 m)	#6 x 5'-3" (1.600 m)
27" (685.8 mm) TO 36" (914.4 mm)	3'-9" (1.143 m)	5'-9" (1.753 m)
42" (1066.8 mm) TO 48" (1219.2 mm)	4'-6" (1.372 m)	6'-6" (1.981 m)
54" (1371.6 mm) TO 60" (1524.0 mm)	5'-0" (1.524 m)	7'-0" (2.134 m)
66" (1676.4 mm) TO 72" (1828.8 mm)	5'-6" (1.676 m)	7'-6" (2.286 m)

DATE	BY	REVISIONS
		1. REVISED
		2. REVISED
		3. REVISED
		4. REVISED
		5. REVISED
		6. REVISED
		7. REVISED
		8. REVISED
		9. REVISED
		10. REVISED
		11. REVISED
		12. REVISED
		13. REVISED
		14. REVISED
		15. REVISED
		16. REVISED
		17. REVISED
		18. REVISED
		19. REVISED
		20. REVISED
		21. REVISED
		22. REVISED
		23. REVISED
		24. REVISED
		25. REVISED
		26. REVISED
		27. REVISED
		28. REVISED
		29. REVISED
		30. REVISED
		31. REVISED
		32. REVISED
		33. REVISED
		34. REVISED
		35. REVISED
		36. REVISED
		37. REVISED
		38. REVISED
		39. REVISED
		40. REVISED
		41. REVISED
		42. REVISED
		43. REVISED
		44. REVISED
		45. REVISED
		46. REVISED
		47. REVISED
		48. REVISED
		49. REVISED
		50. REVISED
		51. REVISED
		52. REVISED
		53. REVISED
		54. REVISED
		55. REVISED
		56. REVISED
		57. REVISED
		58. REVISED
		59. REVISED
		60. REVISED
		61. REVISED
		62. REVISED
		63. REVISED
		64. REVISED
		65. REVISED
		66. REVISED
		67. REVISED
		68. REVISED
		69. REVISED
		70. REVISED
		71. REVISED
		72. REVISED
		73. REVISED
		74. REVISED
		75. REVISED
		76. REVISED
		77. REVISED
		78. REVISED
		79. REVISED
		80. REVISED
		81. REVISED
		82. REVISED
		83. REVISED
		84. REVISED
		85. REVISED
		86. REVISED
		87. REVISED
		88. REVISED
		89. REVISED
		90. REVISED
		91. REVISED
		92. REVISED
		93. REVISED
		94. REVISED
		95. REVISED
		96. REVISED
		97. REVISED
		98. REVISED
		99. REVISED
		100. REVISED

DATE	BY	REVISIONS
		1. REVISED
		2. REVISED
		3. REVISED
		4. REVISED
		5. REVISED
		6. REVISED
		7. REVISED
		8. REVISED
		9. REVISED
		10. REVISED
		11. REVISED
		12. REVISED
		13. REVISED
		14. REVISED
		15. REVISED
		16. REVISED
		17. REVISED
		18. REVISED
		19. REVISED
		20. REVISED
		21. REVISED
		22. REVISED
		23. REVISED
		24. REVISED
		25. REVISED
		26. REVISED
		27. REVISED
		28. REVISED
		29. REVISED
		30. REVISED
		31. REVISED
		32. REVISED
		33. REVISED
		34. REVISED
		35. REVISED
		36. REVISED
		37. REVISED
		38. REVISED
		39. REVISED
		40. REVISED
		41. REVISED
		42. REVISED
		43. REVISED
		44. REVISED
		45. REVISED
		46. REVISED
		47. REVISED
		48. REVISED
		49. REVISED
		50. REVISED
		51. REVISED
		52. REVISED
		53. REVISED
		54. REVISED
		55. REVISED
		56. REVISED
		57. REVISED
		58. REVISED
		59. REVISED
		60. REVISED
		61. REVISED
		62. REVISED
		63. REVISED
		64. REVISED
		65. REVISED
		66. REVISED
		67. REVISED
		68. REVISED
		69. REVISED
		70. REVISED
		71. REVISED
		72. REVISED
		73. REVISED
		74. REVISED
		75. REVISED
		76. REVISED
		77. REVISED
		78. REVISED
		79. REVISED
		80. REVISED
		81. REVISED
		82. REVISED
		83. REVISED
		84. REVISED
		85. REVISED
		86. REVISED
		87. REVISED
		88. REVISED
		89. REVISED
		90. REVISED
		91. REVISED
		92. REVISED
		93. REVISED
		94. REVISED
		95. REVISED
		96. REVISED
		97. REVISED
		98. REVISED
		99. REVISED
		100. REVISED

