

F.A.U. RTE.	SECTION	COUNTY	TOTAL SHEETS	SHEET NO.
1625	09-00046-00-RS	COOK	11	1
FED. ROAD DIST. NO. 1	ILLINOIS	CONTRACT NO. 63307		

INDEX OF SHEETS

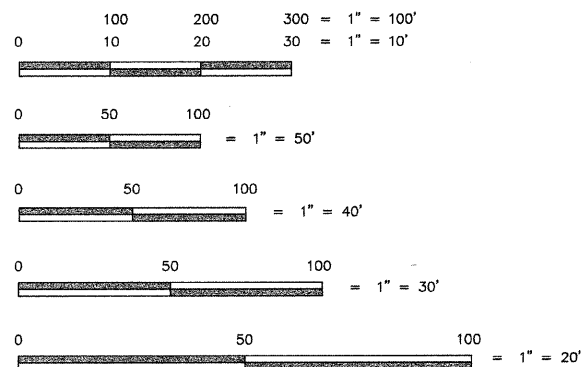
- COVER SHEET
- SUMMARY OF QUANTITIES, SYMBOLS, NOTES & DETAILS
- ALIGNMENT & TIES / TYPICAL CROSS-SECTIONS
- SITE PLAN - STA. 10+65 TO 21+00
- SITE PLAN - STA. 21+00 TO 33+00
- SITE PLAN - STA. 33+00 TO 36+20
- EXISTING PAVEMENT CORE FIELD REPORT
- AGGREGATE FOR TEMPORARY ACCESS DETAIL
- BUTT JOINT AND HOT MIX ASPHALT TAPER DETAILS
- I.D.O.T. DISTRICT 1 (TC-10) TRAFFIC CONTROL AND PROTECTION FOR SIDE ROADS, INTERSECTIONS AND DRIVEWAYS
- I.D.O.T. DISTRICT 1 (TC-13) TYPICAL PAVEMENT MARKINGS

THE IMPROVEMENT IS LOCATED IN THE VILLAGE OF FLOSSMOOR

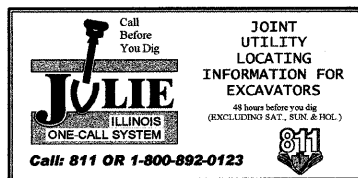
DESIGN DESIGNATION = COLLECTOR URBAN

AVERAGE DAILY TRAFFIC
 EXISTING A.D.T. = 9,900 (2009)
 FUTURE A.D.T. = 11,880 (2030)

POSTED SPEED LIMIT
 POSTED SPEED LIMIT = 30 m.p.h.
 DESIGN SPEED LIMIT = 30 m.p.h.



FULL SIZE PLANS HAVE BEEN PREPARED USING STANDARD ENGINEERING SCALES. REDUCED SIZE PLANS WILL NOT CONFORM TO STANDARD SCALES. IN MAKING MEASUREMENTS ON REDUCED SIZE PLANS, THE ABOVE SCALES MAY BE USED.



CONTRACT NO. 63307

ILLINOIS PROFESSIONAL DESIGN FIRM NO. 184-002235

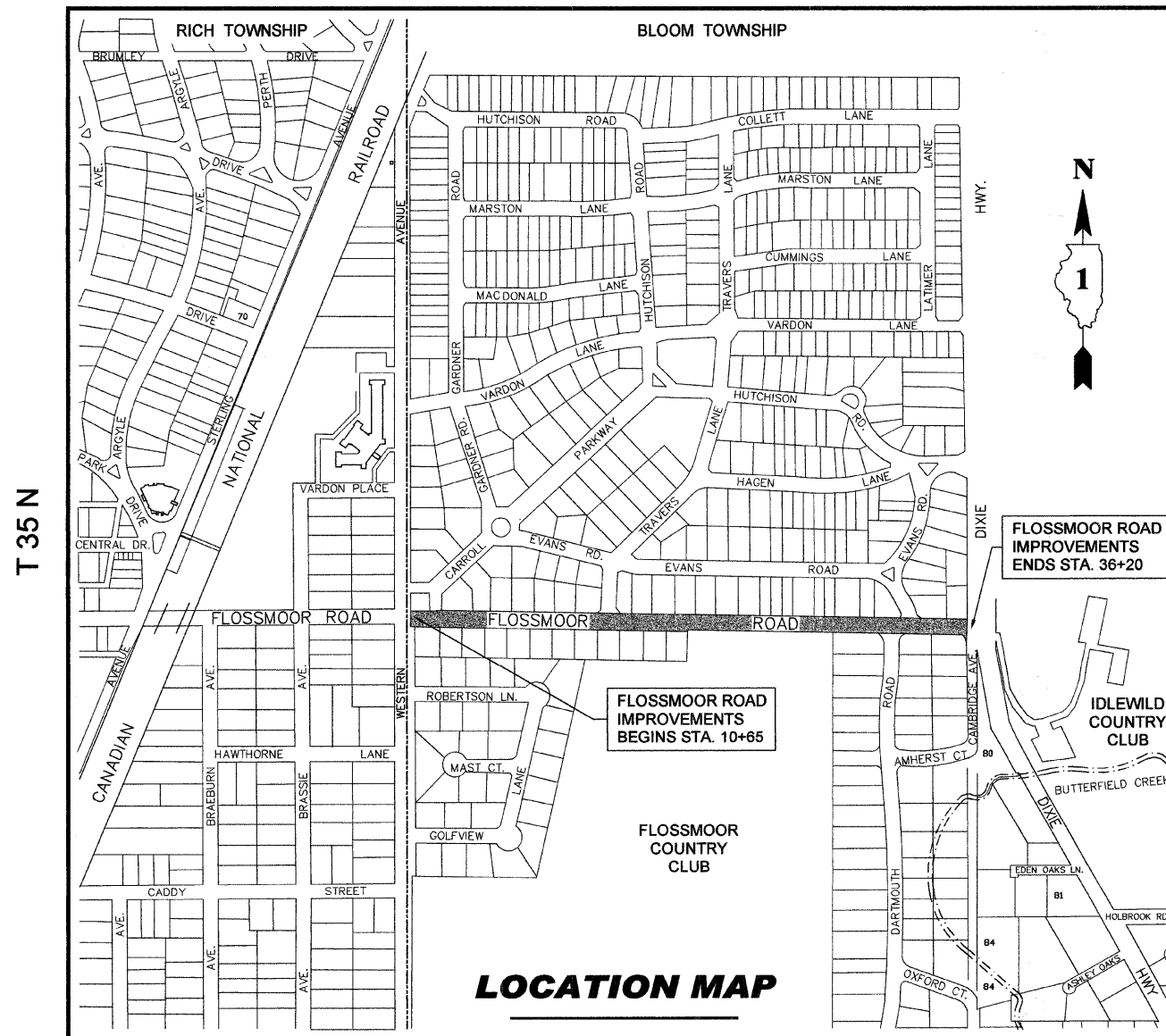
TECH 3 Consulting Group, Inc.

JOB NO. 09709
 ENGINEERS SURVEYORS
 737 West Exchange St. Crete, IL 60417
 ph 708.672.4994 fax 708.672.3739

STATE OF ILLINOIS
 DEPARTMENT OF TRANSPORTATION
 DIVISION OF HIGHWAYS
**PLANS FOR PROPOSED
 FEDERAL AID HIGHWAY**
 F.A.U. ROUTE 1625 (FLOSSMOOR ROAD)
 WESTERN AVENUE TO DIXIE HIGHWAY
 SECTION: 09-00046-00-RS
 PROJECT NO. ARA-9003 (379)
 RESURFACING
 VILLAGE OF FLOSSMOOR
 COOK COUNTY, ILLINOIS
 C-91-716-09

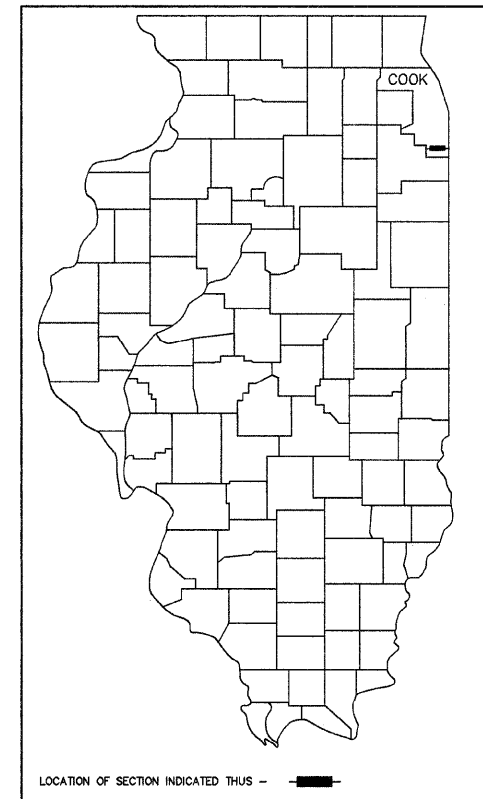
R 14 E

3 rd P.M.



LOCATION MAP

GROSS AND NET LENGTH OF IMPROVEMENT = 2,555 LINEAL FEET OR 0.48 MILES



AGENCY RESPONSIBLE FOR LETTING

APPROVED October 13, 2009
Serg E. Buengow
 VILLAGE OF FLOSSMOOR, DIRECTOR OF PUBLIC WORKS

PASSED October 27, 2009
Chad Peterson
 REGION ONE ENGINEER OF LOCAL ROADS & STREETS

RELEASING FOR BID BASED ON LIMITED REVIEW OCTOBER 29, 2009
Diane M. O'Keefe
 DEPUTY DIRECTOR OF HIGHWAYS, REGION 1 ENGINEER

10-13-09
 ROBERT W. MATTHEY, P.E.
 LICENSE NO. 062 - 39765
 LICENSE EXPIRES: 11/30/11
 TECH 3 CONSULTING GROUP, INC.

PRINTED BY THE AUTHORITY OF THE STATE OF ILLINOIS

DISTRICT 1 FIELD ENGINEER: MELCHOR MANGOBA 847-705-4408

SUMMARY OF QUANTITIES

PAY ITEM CODE #	DESCRIPTION	UNIT	QUANTITY	CONSTRUCTION TYPE CODE	
40201000	AGGREGATE FOR TEMPORARY ACCESS	TON	28	1000	
40600100	BITUMINOUS MATERIALS (PRIME COAT)	GALLON	1,416	1000	
40600982	HOT-MIX ASPHALT SURFACE REMOVAL - BUTT JOINT	SQ. YD.	125	1000	
40603340	HOT-MIX ASPHALT SURFACE COURSE, MIX "D", N70	TON	1,057	1000	
44000161	HOT-MIX ASPHALT SURFACE REMOVAL, 3"	SQ. YD.	9,441	1000	
44201741	CLASS D PATCHES, TYPE II, 8 INCH	SQ. YD.	100	1000	
60255500	MANHOLES TO BE ADJUSTED	EACH	3	1000	
67100100	MOBILIZATION	L SUM	1	1000	
△	70101700	TRAFFIC CONTROL AND PROTECTION	L SUM	1	1000
*	78001100	PAINT PAVEMENT MARKING - LETTERS AND SYMBOLS	SQ. FT.	119.6	1000
*	78001110	PAINT PAVEMENT MARKING - LINE 4"	FOOT	4,725	1000
*	78001130	PAINT PAVEMENT MARKING - LINE 6"	FOOT	477	1000
*	78001180	PAINT PAVEMENT MARKING - LINE 24"	FOOT	22	1000
X4067107	POLYMERIZED LEVELING BINDER (MACHINE METHOD), IL-4.75, N50	TON	496	1000	

* = SPECIALTY ITEMS
△ = SEE SPECIAL PROVISIONS

INDEX OF STATE STANDARDS

000001-05	STANDARD SYMBOLS, ABBREVIATIONS AND PATTERNS
442201-03	CLASS C AND D PATCHES
701501-05	URBAN LANE CLOSURE, 2L, 2W, UNDIVIDED
701801-04	LANE CLOSURE, MULTILANE 1W OR 2W CROSSWALK OR SIDEWALK CLOSURE
701901-01	TRAFFIC CONTROL DEVICES

SYMBOL LEGEND

EXISTING		PROPOSED
— W —	WATERMAIN	— W —
— W — X — W —	WATERMAIN AND VALVE BOX	— W — X — W —
— W — H — W —	HYDRANT INSTALLATION	— W — H — W —
— W — ⊗ — W —	WATERMAIN AND VALVE PIT	— W — ⊗ — W —
— W — ○ —	WATER SERVICE W/ "B" BOX	— W — ● —
— ⊗ —	SANITARY SEWER AND MANHOLE	— ⊗ —
— ⊗ —	SANITARY SEWER AND DROP MANHOLE	— ⊗ —
— CS — ⊗ — CS —	COMBINED SEWER AND MANHOLE	— CS — ⊗ — CS —
— CS — (COMBINED SEWER AND HEADWALL	— CS — (
—) — □ —	INLET AND STORM SEWER	—) — ■ —
—) — ○ —	CATCH BASIN AND STORM SEWER	—) — ● —
—	DRAINAGE SWALE	—
— 750.0	SPOT ELEVATION	— 750.0
←	DIRECTION OF OVERLAND DRAINAGE	←
— X — X — X —	FENCE	— X — X — X —
—	PROPERTY LINE	—
—	RIGHT-OF-WAY LINE	—
— Y — Y — Y —	SLOPE	— Y — Y — Y —
— ⊙ —	STREET LIGHT	— ⊙ —
— ⊙ —	PARKING LIGHT	— ⊙ —
— T —	I.B.T. BURIED CABLE	— T —
— G —	GAS LINE	— G —
— UE —	BURIED ELECTRICAL CABLE	— UE —
— ○ —	POWER LINE POLE	— ● —
— □ —	ELECTRICAL TRANSFORMER	— ■ —
— △ —	TELEPHONE PEDESTAL	— ▲ —
— ○ —	ELECTRICAL PEDESTAL	— ● —

GENERAL NOTES :

- ALL CONSTRUCTION SHALL CONFORM TO THE ILLINOIS SOCIETY OF PROFESSIONAL ENGINEERS "STANDARD SPECIFICATIONS FOR WATER AND SEWER MAIN CONSTRUCTION IN ILLINOIS" IN ITS LATEST EDITION AND THE ILLINOIS DEPARTMENT OF TRANSPORTATION "STANDARD SPECIFICATIONS FOR ROAD AND BRIDGE CONSTRUCTION" IN ITS LATEST EDITION AND SUPPLEMENTAL SPECIFICATIONS AND RECURRING SPECIAL PROVISIONS.
- THE ENGINEER SHALL BE NOTIFIED 2 WORKING DAYS PRIOR TO COMMENCING OF CONSTRUCTION.
- THE CONTRACTOR SHALL NOTIFY ALL UTILITY COMPANIES FOR FIELD LOCATIONS OF THEIR FACILITIES PRIOR TO CONSTRUCTION. THE CONTRACTOR SHALL BE RESPONSIBLE FOR MAINTENANCE AND PRESERVATION OF THESE FACILITIES. CALL J.U.L.I.E. 800/892-0123 OR 811.
- AT THE END OF EACH CONSTRUCTION DAY ALL ROADS SHALL BE CLEANED OF MUD AND OPENED FOR TRAFFIC. THE CONTRACTOR IS RESPONSIBLE FOR ALL BARRICADES AND FENCE AS NECESSARY. COST IS BASED ON "TRAFFIC CONTROL AND PROTECTION".
- ALL PAVEMENT MARKINGS SHALL BE PAINT PAVEMENT MARKINGS PER SECTION 780 OF THE STANDARD SPECIFICATIONS FOR ROAD AND BRIDGE CONSTRUCTION.
- ALL BENCHMARK ELEVATIONS ARE BASED ON THE N.G.V.D. 1929 DATUM.

ILLINOIS PROFESSIONAL DESIGN FIRM NO. 184-002235

TECH 3 Consulting Group, Inc.

ENGINEERS SURVEYORS
737 West Exchange St. Crete, IL 60417
ph 708.672.4994 fax 708.672.3739



Village of Flossmoor
Flossmoor, Illinois

DESIGNED BY: RWM
DRAWN BY: EGH
CHECKED BY: RWM

NO.	DATE	BY	DESCRIPTION
1	09/07/08	EGH	PER I.D.O.T. REVIEW
2	10/12/09	EGH	PER I.D.O.T. REVIEW

FLOSSMOOR ROAD RESURFACING
WESTERN AVENUE TO DIXIE HIGHWAY
SUMMARY OF QUANTITIES, SYMBOLS, NOTES & DETAILS

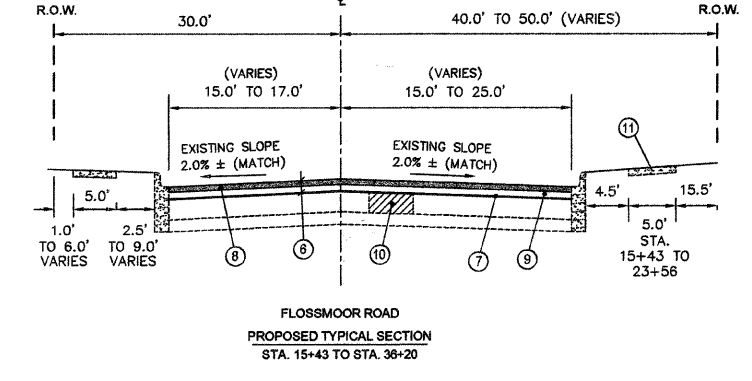
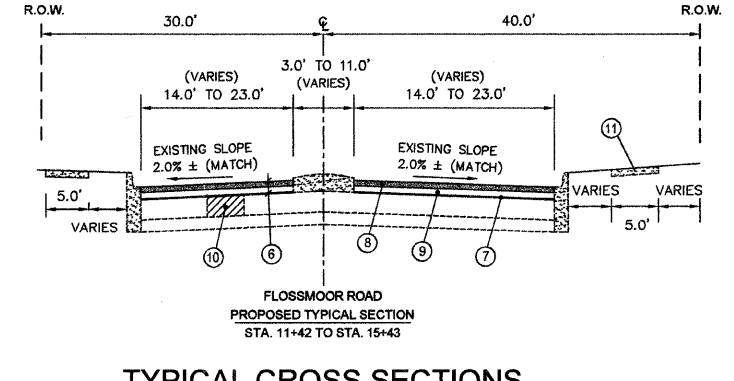
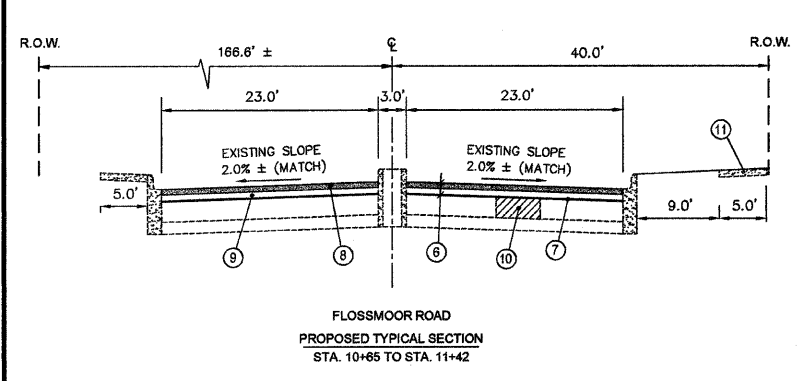
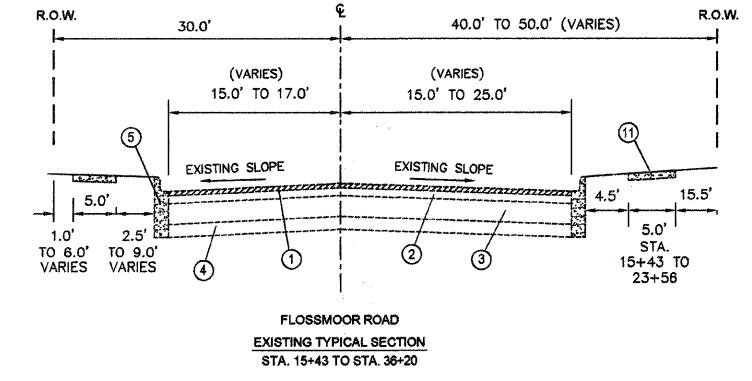
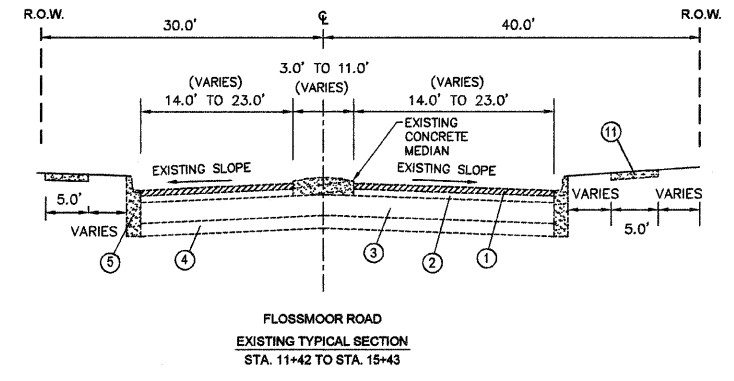
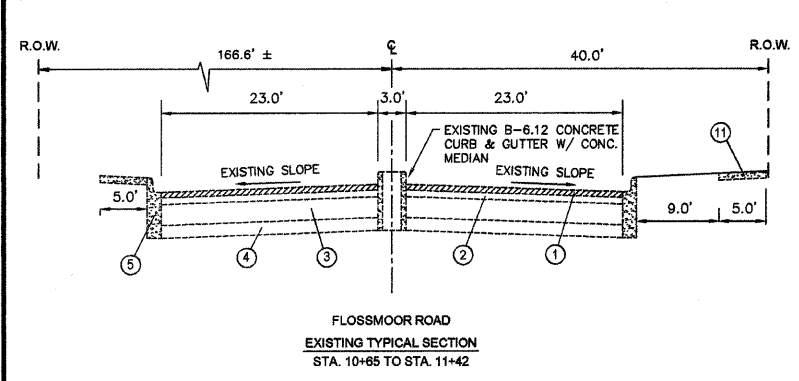
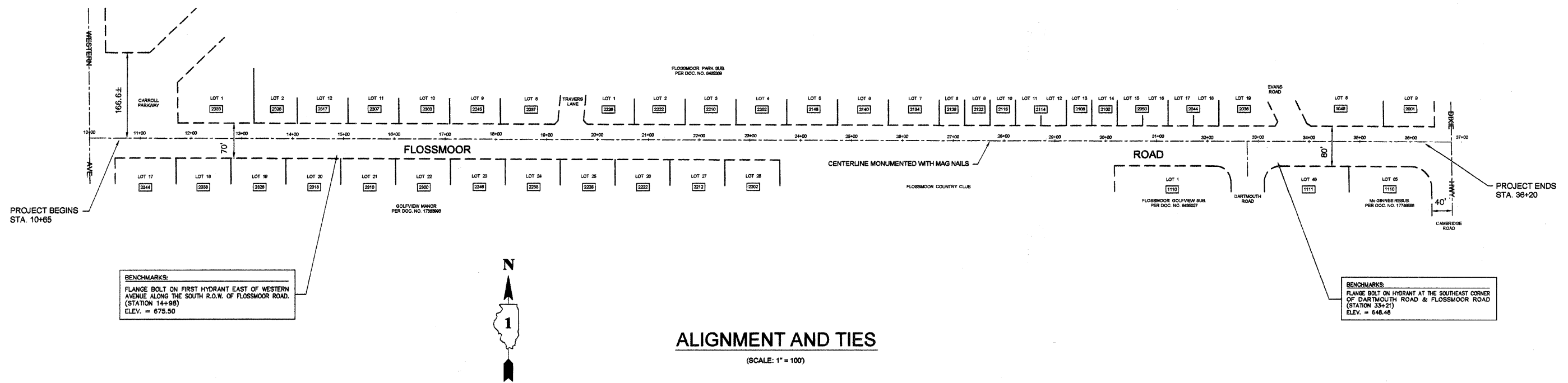
DATE: JUNE 24, 2009

SCALE: AS NOTED

JOB NO. 09709

2

OF 11



TYPICAL CROSS SECTIONS
(NOT TO SCALE)

LEGEND

- ① EXISTING HOT-MIX ASPHALT SURFACE COURSE, 1 3/4" (+)
- ② EXISTING HOT-MIX ASPHALT BINDER COURSE 1 3/4" (+)
- ③ EXISTING P.C.C. BASE COURSE, 7 3/4" (+)
- ④ EXISTING HOT-MIX ASPHALT BINDER COURSE, 3" (+)
- ⑤ EXISTING COMBINATION CONCRETE CURB & GUTTER, TYPE B-6.12
- ⑥ HOT-MIX ASPHALT SURFACE REMOVAL, 3"
- ⑦ BITUMINOUS MATERIALS (PRIME COAT) (0.15 GAL./S.Y.)
- ⑧ HOT MIX ASPHALT SURFACE COURSE, MIX 'D', N70, 2"
- ⑨ POLYMERIZED LEVELING BINDER (MACHINE METHOD), IL-4.75, N60, 1"
- ⑩ CLASS D PATCHES, TYPE II, 8" (TO BE DELINEATED IN FIELD BY ENGINEER)
- ⑪ EXISTING P.C.C. SIDEWALK

NOTE: CONTRACTOR SHALL MILL BEFORE PATCHING

HOT-MIX ASPHALT MIXTURE REQUIREMENTS	
MIXTURE TYPE	AIR VOIDS (%)
PAVEMENT RESURFACING:	
HOT-MIX ASPHALT SURFACE COURSE, MIX 'D', N70 (IL-9.5mm)	4% @ 70 GYR.
POLYMERIZED LEVELING BINDER (MACHINE METHOD), IL-4.75, N60	4% @ 50 GYR.
CLASS D PATCHES:	
HOT-MIX ASPHALT BINDER IL-19mm	4% @ 70 GYR.

NOTES:
THE UNIT WEIGHT USED TO CALCULATE THE SURFACE MIXTURE IS 112 LB./S.Y./IN.
THE 'AC TYPE' FOR POLYMERIZED HMA MIXES SHALL BE 'SBS/SBR PG 70-22' AND FOR NON-POLYMERIZED HMA THE 'AC TYPE' SHALL BE 'PG 64-22' UNLESS MODIFIED BY DISTRICT ONE SPECIAL PROVISIONS. FOR 'PERCENT OF RAP' SEE DISTRICT ONE SPECIAL PROVISIONS.

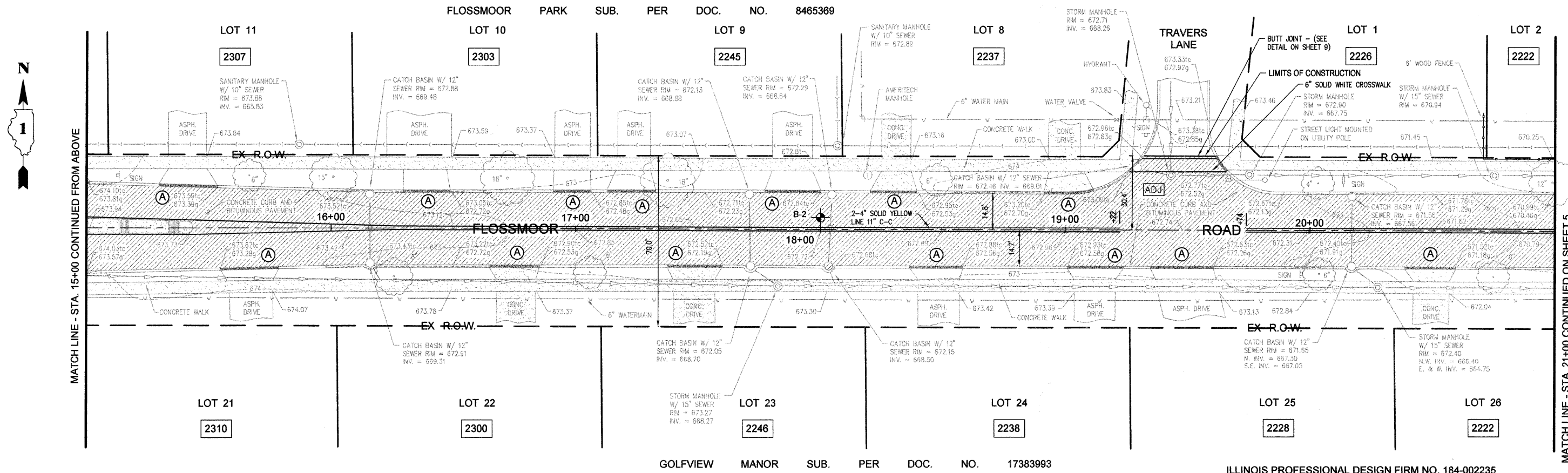
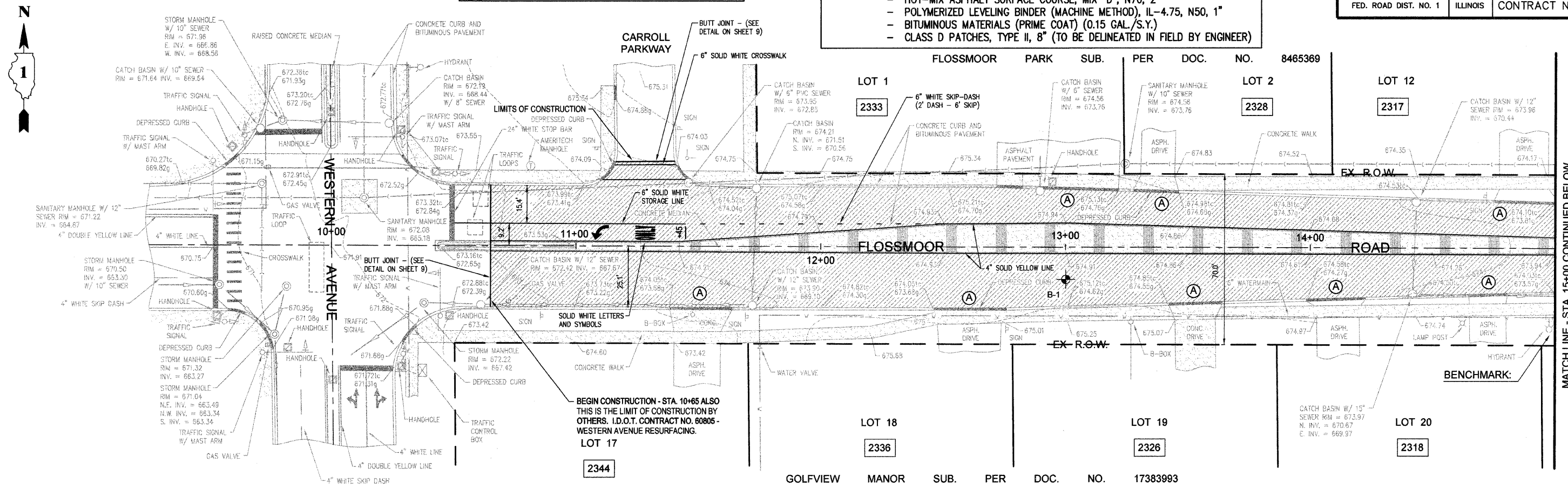
ILLINOIS PROFESSIONAL DESIGN FIRM NO. 184-002235



F.A.U. RTE.	SECTION	COUNTY	TOTAL SHEETS	SHEET NO.
1625	09-00046-00-RS	COOK	11	4
FED. ROAD DIST. NO. 1		ILLINOIS CONTRACT NO. 63307		

(A) = AGGREGATE FOR TEMPORARY ACCESS
(SEE DETAIL ON SHEET 9)

- EXISTING PAVEMENT TO RECEIVE:
- HOT-MIX ASPHALT SURFACE REMOVAL, 3"
 - HOT-MIX ASPHALT SURFACE COURSE, MIX "D", N70, 2"
 - POLYMERIZED LEVELING BINDER (MACHINE METHOD), IL-4.75, N50, 1"
 - BITUMINOUS MATERIALS (PRIME COAT) (0.15 GAL./S.Y.)
 - CLASS D PATCHES, TYPE II, 8" (TO BE DELINEATED IN FIELD BY ENGINEER)



TECH 3 Consulting Group, Inc.
ENGINEERS SURVEYORS
737 West Exchange St. Crete, IL 60417
ph 708.672.4994 fax 708.672.3739




Village of Flossmoor
Flossmoor, Illinois

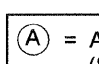
DESIGNED BY: RWM		NO.		DATE		BY		DESCRIPTION	
DRAWN BY: EGH		1	09/09/09	EGH	PER I.D.O.T. REVIEW				
CHECKED BY: RWM		2	10/12/09	EGH	PER I.D.O.T. REVIEW				

FLOSSMOOR ROAD RESURFACING
WESTERN AVENUE TO DIXIE HIGHWAY
ROAD PROFILE: STA. 10+65 TO 21+00

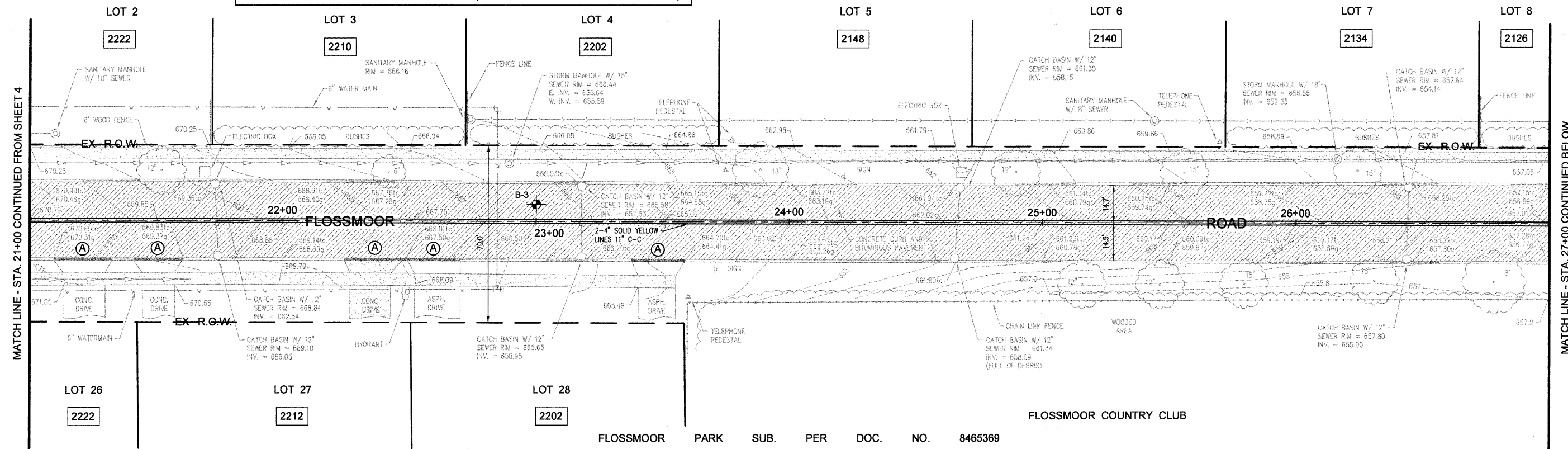
DATE: JUNE 24, 2009 SCALE: 1" = 20' JOB NO. 09709

F.A.U. RTE.	SECTION	COUNTY	TOTAL SHEETS	SHEET NO.
1625	09-00046-00-RS	COOK	11	5
FED. ROAD DIST. NO. 1		ILLINOIS		CONTRACT NO. 63307

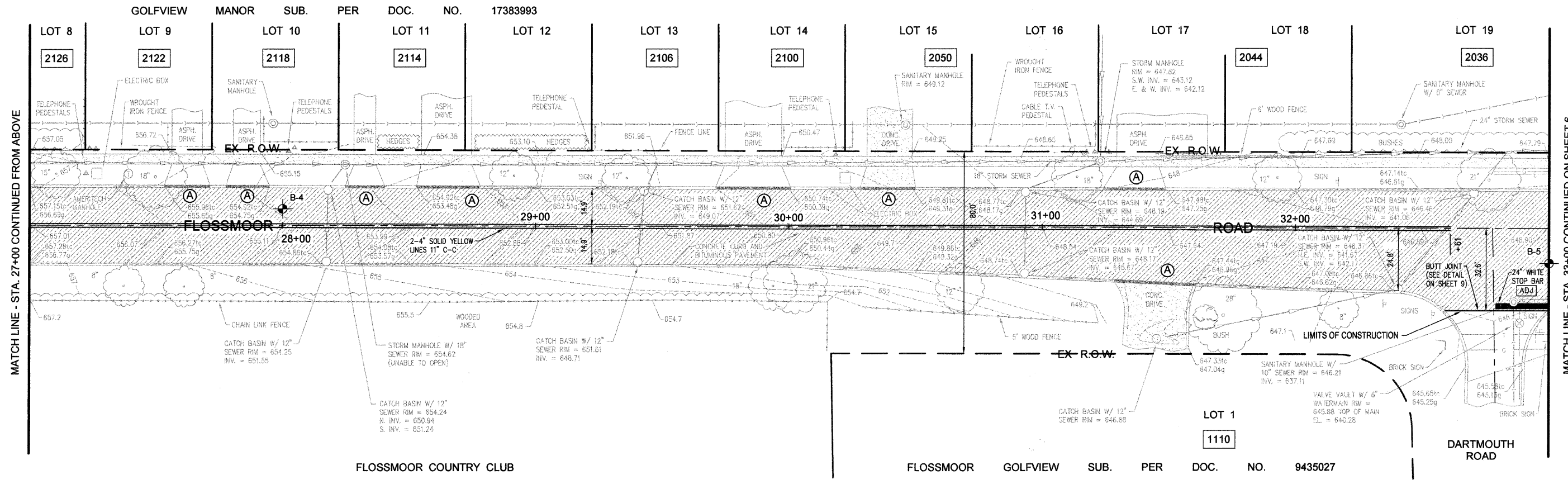
-  = EXISTING PAVEMENT TO RECEIVE:
- HOT-MIX ASPHALT SURFACE REMOVAL, 3"
 - HOT-MIX ASPHALT SURFACE COURSE, MIX "D", N70, 2"
 - POLYMERIZED LEVELING BINDER (MACHINE METHOD), IL-4.75, N50, 1"
 - BITUMINOUS MATERIALS (PRIME COAT) (0.15 GAL./S.Y.)
 - CLASS D PATCHES, TYPE II, 8" (TO BE DELINEATED IN FIELD BY ENGINEER)

 = AGGREGATE FOR TEMPORARY ACCESS (SEE DETAIL ON SHEET 9)

FLOSSMOOR PARK SUB. PER DOC. NO. 8465369



FLOSSMOOR PARK SUB. PER DOC. NO. 8465369



FLOSSMOOR GOLFVIEW SUB. PER DOC. NO. 9435027

ILLINOIS PROFESSIONAL DESIGN FIRM NO. 184-002235

TECH 3 Consulting Group, Inc.
 ENGINEERS SURVEYORS
 737 West Exchange St. Crete, IL 60417
 ph 708.672.4994 fax 708.672.3739

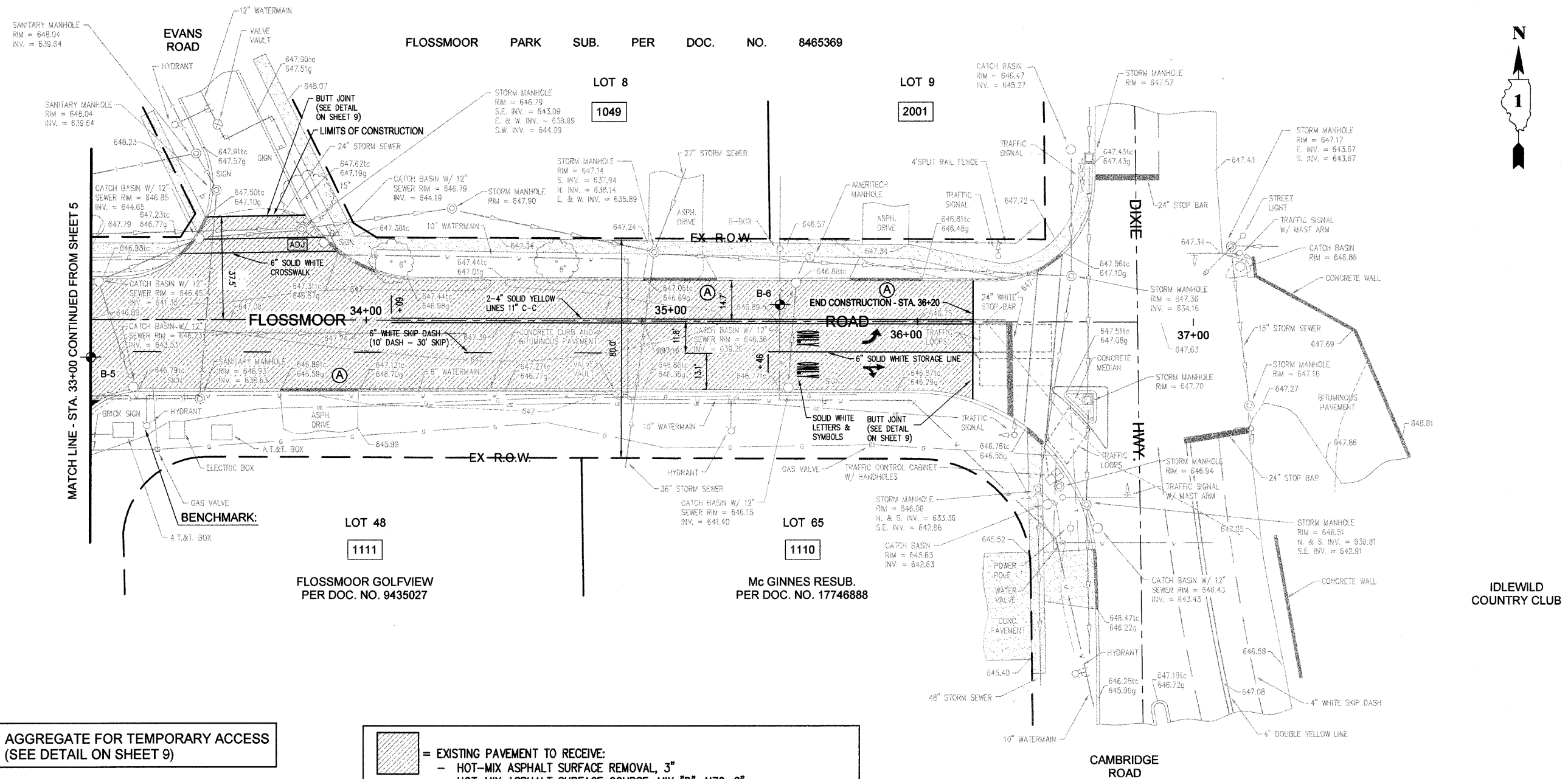


Village of Flossmoor
 Flossmoor, Illinois

DESIGNED BY: RWM				
DRAWN BY: EGH				
CHECKED BY: RWM				
REVISIONS				
NO.	DATE	BY	DESCRIPTION	
1	09/09/09	EGH	PER I.D.O.T. REVIEW	
2	10/12/09	EGH	PER I.D.O.T. REVIEW	

FLOSSMOOR ROAD RESURFACING
WESTERN AVENUE TO DIXIE HIGHWAY
ROAD PROFILE: STA. 21+00 TO 33+00

DATE: JUNE 24, 2009 SCALE: 1" = 20' JOB NO. 09709



(A) = AGGREGATE FOR TEMPORARY ACCESS (SEE DETAIL ON SHEET 9)

- = EXISTING PAVEMENT TO RECEIVE:
- HOT-MIX ASPHALT SURFACE REMOVAL, 3"
 - HOT-MIX ASPHALT SURFACE COURSE, MIX "D", N70, 2"
 - POLYMERIZED LEVELING BINDER (MACHINE METHOD), IL-4.75, N50, 1"
 - BITUMINOUS MATERIALS (PRIME COAT) (0.15 GAL./S.Y.)
 - CLASS D PATCHES, TYPE II, 8" (TO BE DELINEATED IN FIELD BY ENGINEER)



DESIGNED BY:	RWM	REVISIONS			
DRAWN BY:	EGH	NO.	DATE	BY	DESCRIPTION
CHECKED BY:	RWM	1	09/09/09	EGH	PER I.D.O.T. REVIEW
		2	10/12/09	EGH	PER I.D.O.T. REVIEW

F.A.U. RTE.	SECTION	COUNTY	TOTAL SHEETS	SHEET NO.
1625	09-00046-00-RS	COOK	11	7
FED. ROAD DIST. NO. 1		ILLINOIS	CONTRACT NO. 63307	



Date: 24-Apr-2009
Page 2 of 2
1945 E. 87th St
Chicago, IL 60617-2946
Phone (773) 721-2200
Fax (773) 721-2206

Field Report

Client: Flossmoor, Village of **Arrive Time:** 08:00 AM **Tolls:** **Office Use Only**
Project: Flossmoor Road / Dixie **Depart Time:** 12:30 PM **Parking:**
Project No.: Highway to Western **Hours On Site:** 4.5 **Mobilization:**
Contact: Bob Matthey **Add. Report Time:**
Company: **Delays:**
Phone: **Equipment:** Coring Equipment
Test Summary: Other **Weather:** 70 °F, Clear

Note: This report and test results are subject to review by the FTL Project Manager and are for informational purposes. Locations, elevations and depths may be estimated.

No deficiencies included in this report

Station 23+00
0 to 1.38" Bituminous Surface (B - 3)
1.38" to 3.38" Bituminous Binder
3.38" to 11.63" Concrete Pavement
11.63" to 14.63" Bituminous Binder

Station 18+00
0 to 1.75" Bituminous Surface (B - 2)
1.75" to 3.50" Bituminous Binder
3.50" to 11.13" Concrete Pavement
11.13" to 13.88" Bituminous Binder

Station 13+00
0 to 1.75" Bituminous Surface (B - 1)
1.75" to 3.25" Bituminous Binder
3.25" to 10.50" Concrete Pavement
10.50" to 15.75" Bituminous Binder

The results indicate total pavement thicknesses ranging from 13.88" to 16". The locations were all patched upon completion. This completed the investigation for today.

Please feel free to call with any questions or comments.

Technician Signature: *[Signature]*

Technician Printed Name: Glen Hodson

REVISIONS: GH 04/29/2009, GH 04/29/2009

Reviewed By: *[Signature]*

Reviewed By: Glen Hodson

POSTED DATE: 04/29/2009



Date: 24-Apr-2009
Page 1 of 2
1945 E. 87th St
Chicago, IL 60617-2946
Phone (773) 721-2200
Fax (773) 721-2206

Field Report

Client: Flossmoor, Village of **Arrive Time:** 08:00 AM **Tolls:** **Office Use Only**
Project: Flossmoor Road / Dixie **Depart Time:** 12:30 PM **Parking:**
Project No.: Highway to Western **Hours On Site:** 4.5 **Mobilization:**
Contact: Bob Matthey **Add. Report Time:**
Company: **Delays:**
Phone: **Equipment:** Coring Equipment
Test Summary: Other **Weather:** 70 °F, Clear

Note: This report and test results are subject to review by the FTL Project Manager and are for informational purposes. Locations, elevations and depths may be estimated.

No deficiencies included in this report

On April 24, 2009, a coring of pavement was performed at the above project. The focus of this coring was to determine the pavement thickness and composition. The investigation was performed on Flossmoor Road between Dixie Highway and Western Ave.

A 3" diameter diamond core drill was utilized to remove samples of the pavement for thickness determination at 6 locations. Measurements of the various pavement material was then performed and recorded. The thickness results and locations are as follows:

Station 35+50 WB Lanes (Moved 50' West to avoid traffic)
0 to 1.75" Bituminous Surface (B - 6)
1.75" to 4.75" Bituminous Binder
4.75" to 13.25" Concrete Pavement
13.25" to 15.75" Bituminous Binder

Station 33+00
0 to 1.75" Bituminous Surface (B - 5)
1.75" to 5.0" Bituminous Binder
5" to 11.31" Concrete Pavement
11.31" to 14.06" Bituminous Binder

Station 28+00 (Moved 3' North from Original Location)
0 to 1.75" Bituminous Surface (B - 4)
1.75" to 4.25" Bituminous Binder
4.25" to 11.50" Concrete Pavement
11.50" to 16.0" Bituminous Binder

Technician Signature: *[Signature]*

Technician Printed Name: Glen Hodson

REVISIONS: GH 04/29/2009, GH 04/29/2009

Reviewed By: *[Signature]*

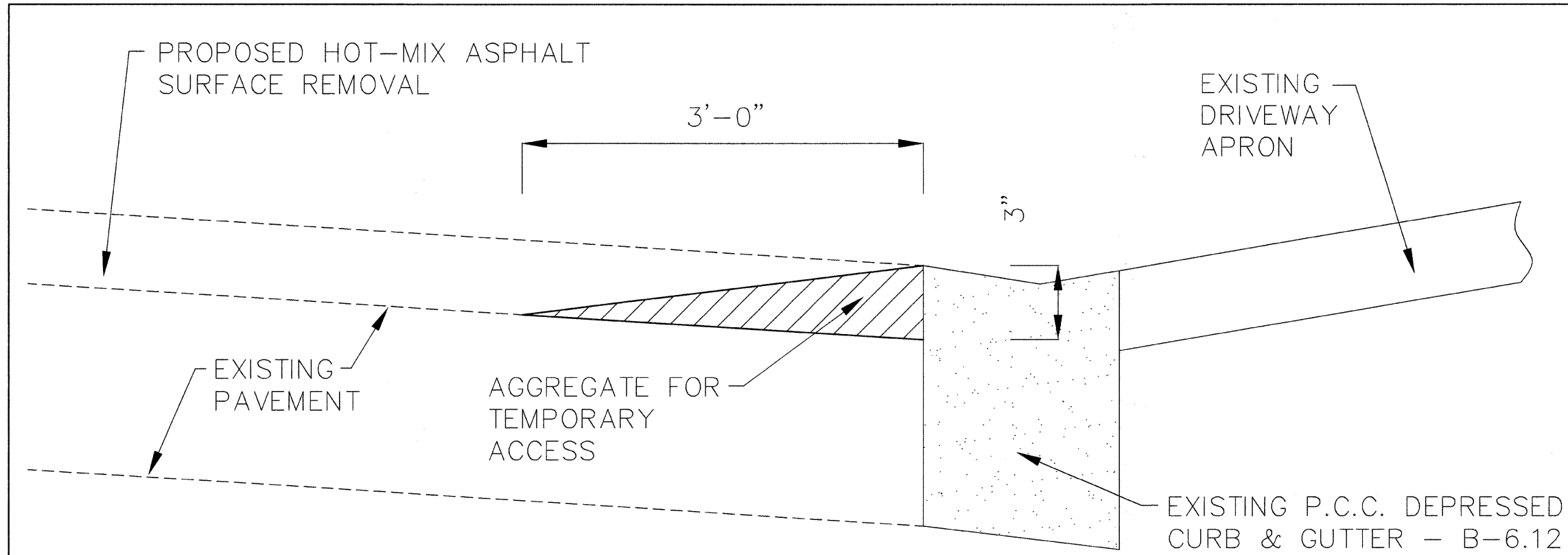
Reviewed By: Glen Hodson

POSTED DATE: 04/29/2009

ILLINOIS PROFESSIONAL DESIGN FIRM NO. 184-002235



F.A.U. RTE.	SECTION	COUNTY	TOTAL SHEETS	SHEET NO.
1625	09-00046-00-RS	COOK	11	8
FED. ROAD DIST. NO. 1		ILLINOIS	CONTRACT NO. 63307	



NOTES:

1. THE AGGREGATE FOR TEMPORARY ACCESS SHALL BE PLACED IMMEDIATELY FOLLOWING THE MILLING OPERATION.
2. THE AGGREGATE FOR TEMPORARY ACCESS SHALL BE REMOVED IMMEDIATELY PRIOR TO PLACING POLYMERIZED LEVELING BINDER.
3. ALL WORK SHALL BE INCIDENTAL TO "AGGREGATE FOR TEMPORARY ACCESS".

AGGREGATE FOR TEMPORARY ACCESS DETAIL

(NOT TO SCALE)

ILLINOIS PROFESSIONAL DESIGN FIRM NO. 184-002235

TECH 3 Consulting Group, Inc.

ENGINEERS SURVEYORS
737 West Exchange St. Crete, IL 60417
ph 708.672.4994 fax 708.672.3739



Village of Flossmoor
Flossmoor, Illinois

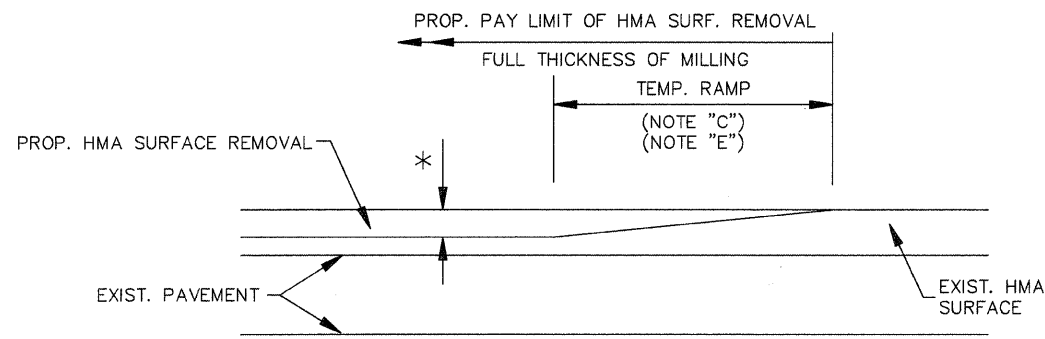
DESIGNED BY: RWM
DRAWN BY: EGH
CHECKED BY: RWM

REVISIONS			
NO.	DATE	BY	DESCRIPTION
2	10/12/09	EGH	PER I.D.O.T. REVIEW

FLOSSMOOR ROAD RESURFACING
WESTERN AVENUE TO DIXIE HIGHWAY
AGGREGATE FOR TEMPORARY ACCESS DETAIL

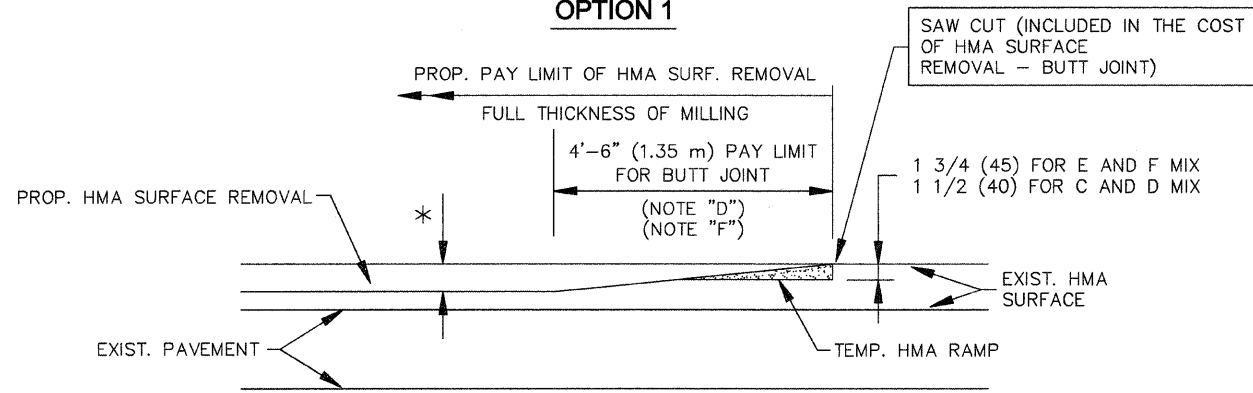
DATE: SEPTEMBER 4, 2009 SCALE: AS NOTED JOB NO. 09709

F.A.U. RTE.	SECTION	COUNTY	TOTAL SHEETS	SHEET NO.
1625	09-00046-00-RS	COOK	11	9
FED. ROAD DIST. NO. 1		ILLINOIS	CONTRACT NO. 63307	



MILLED TEMPORARY RAMP
(FOR BUTT JOINT AND HMA TAPER SEE DETAIL BELOW)

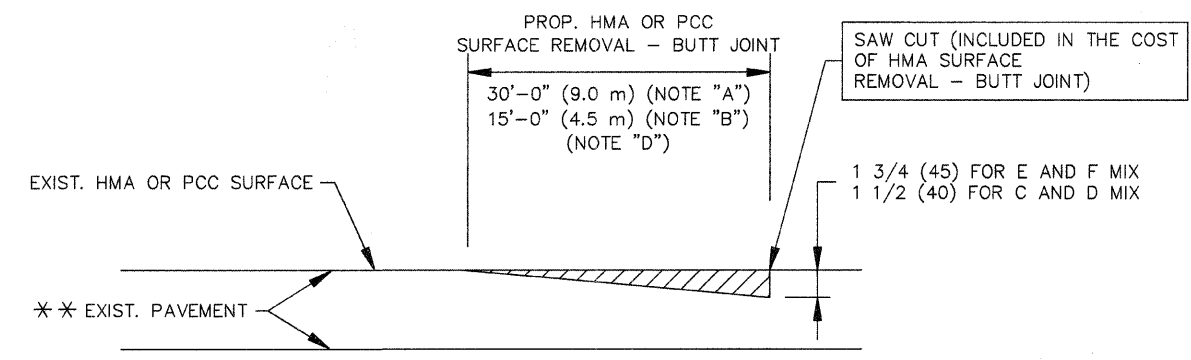
OPTION 1



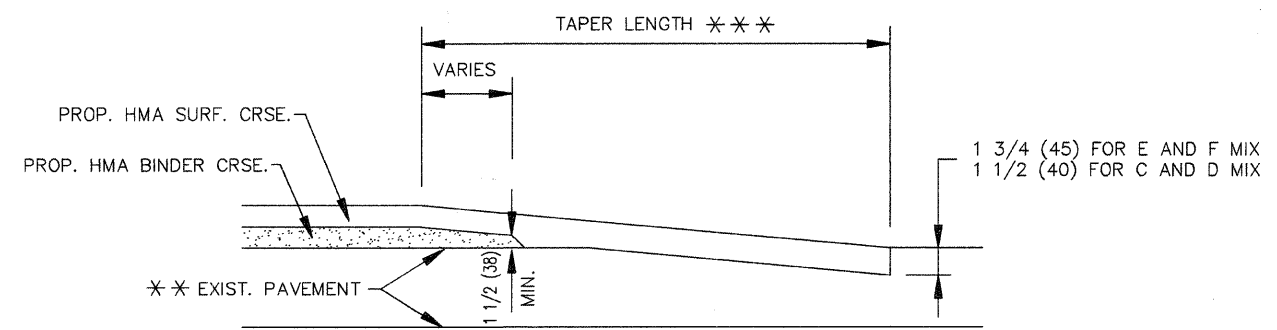
HMA CONSTRUCTED TEMPORARY RAMP
(FOR BUTT JOINT AND HMA TAPER SEE DETAIL BELOW)

OPTION 2

TYPICAL TEMPORARY RAMP



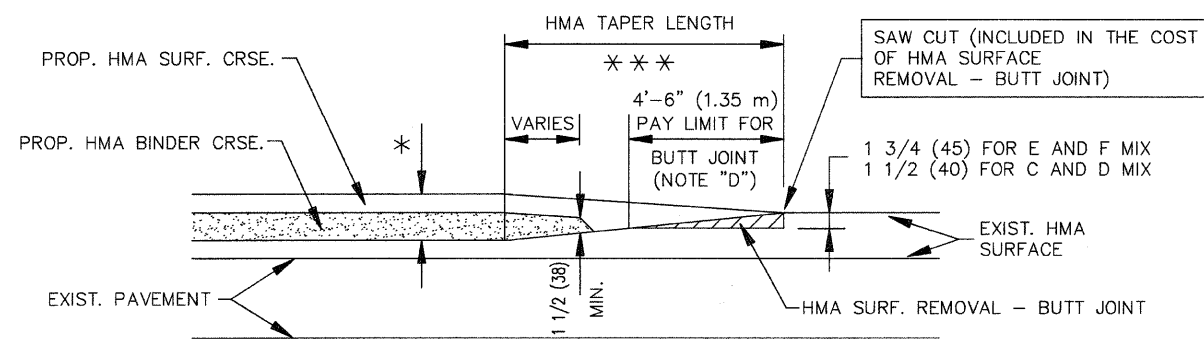
BUTT JOINT DETAIL



HMA TAPER DETAIL

TYPICAL BUTT JOINT AND HMA TAPER FOR RESURFACING ONLY

*** PC CONCRETE, HMA OR HMA RESURFACED PAVEMENT.



BUTT JOINT AND HMA TAPER

TYPICAL BUTT JOINT AND HMA TAPER FOR MILLING AND RESURFACING

NOTES

- A: MAINLINE ROADWAYS AND MAJOR SIDE ROADS.
- B: MINOR SIDE ROADS.
- C: THE TEMP. RAMP SHALL BE CONSTRUCTED IMMEDIATELY UPON REMOVAL OF THE EXISTING HMA SURFACE.
- D: THE BUTT JOINT SHALL BE CONSTRUCTED IMMEDIATELY PRIOR TO PLACING THE PROPOSED HMA COURSES.
- E: TAPER THE TEMP. RAMP AT A RATE OF 3'-0" (900 mm) PER 1 INCH (25 mm) OF MILLING THICKNESS.
- F: INSTALLATION AND REMOVAL OF THE 4'-6" (1.35 m) TEMP. RAMP IS INCLUDED IN COST OF HMA SURFACE REMOVAL - BUTT JOINT
- G: SEE ARTICLE 406.08 AND 406.14 OF THE STANDARD SPECIFICATIONS FOR "HMA AND/OR PCC SURFACE REMOVAL, BUTT JOINT".
- * SEE TYPICAL SECTIONS FOR MILLING THICKNESS.
- *** 20'-0" (6.1 m) PER 1 (25) RESURFACING (NOTE "A")
10'-0" (3.0 m) PER 1 (25) RESURFACING (NOTE "B")

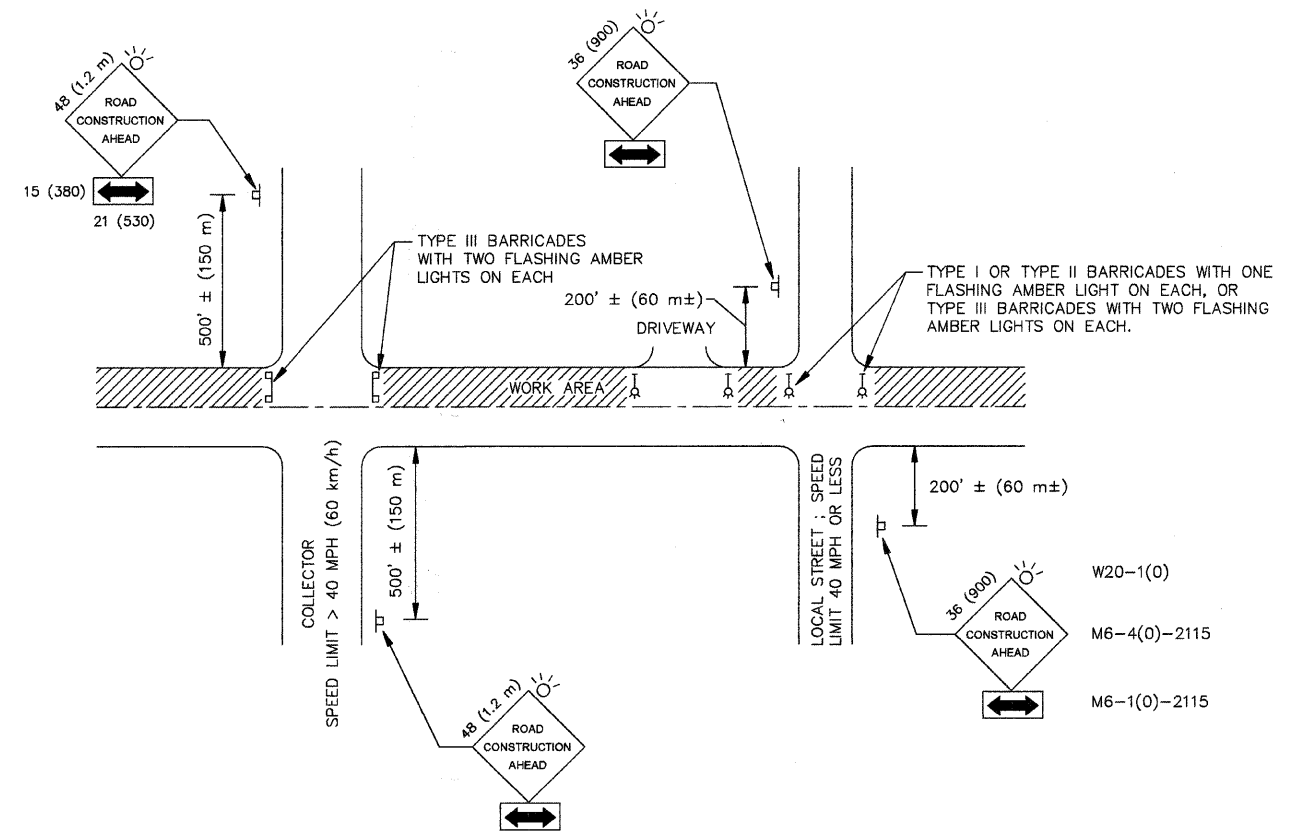
BASIS OF PAYMENT:

THE BUTT JOINT WILL BE PAID FOR AT THE CONTRACT UNIT PRICE PER SQUARE YARD (SQUARE METER) FOR "HOT-MIX ASPHALT SURFACE REMOVAL - BUTT JOINT" OR FOR "PORTLAND CEMENT CONCRETE SURFACE REMOVAL - BUTT JOINT".

ALL DIMENSIONS ARE IN INCHES (MILLIMETERS) UNLESS OTHERWISE SHOWN.

ILLINOIS PROFESSIONAL DESIGN FIRM NO. 184-002235





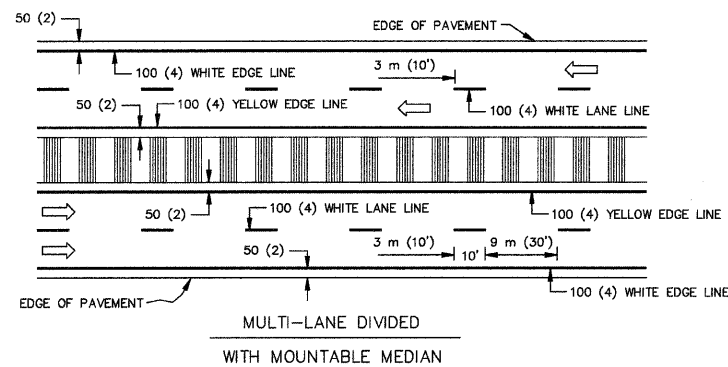
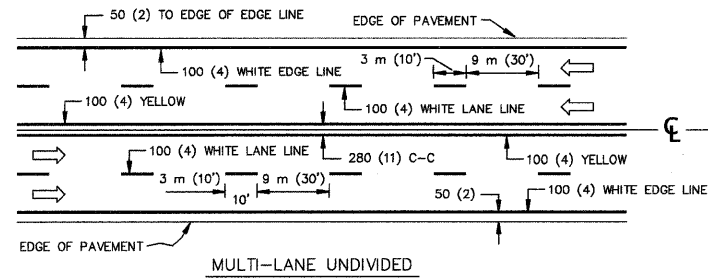
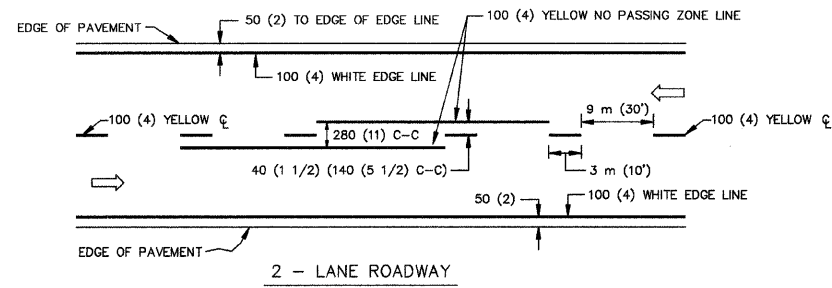
TRAFFIC CONTROL AND PROTECTION FOR SIDE ROADS, INTERSECTIONS AND DRIVEWAYS

NOTES :

- A. FOR NO LANE RESTRICTION ON THE SIDE ROAD OR DRIVEWAYS :
 1. SIDE ROAD WITH A SPEED LIMIT OF 40 MPH (60 km/h) OR LESS AS SHOWN ON THE DRAWING AND AS DIRECTED BY THE ENGINEER:
 - a) ONE "ROAD CONSTRUCTION AHEAD" SIGN 36 X 36 (900X900) WITH A FLASHER AND FLAG MOUNTED ON IT APPROXIMATELY 200' (60 m) IN ADVANCE OF THE MAIN ROUTE.
 - b) THE CLOSED PORTION OF THE MAIN ROUTE SHALL BE PROTECTED BY BLOCKING WITH TYPE I, TYPE II, OR TYPE III BARRICADES, 1/3 OF THE CROSS SECTION OF THE CLOSED PORTION.
 2. SIDE ROAD WITH A SPEED LIMIT GREATER THAN 40 MPH (60 km/h) AS SHOWN ON THE DRAWING AND AS DIRECTED BY THE ENGINEER:
 - a) ONE "ROAD CONSTRUCTION AHEAD" SIGN 48 X 48 (1.2 m x 1.2 m) WITH A FLASHER MOUNTED ON IT APPROXIMATELY 500' (150 m) IN ADVANCE OF THE MAIN ROUTE.
 - b) THE CLOSED PORTION OF THE MAIN ROUTE SHALL BE PROTECTED BY BLOCKING WITH TYPE III BARRICADES, 1/2 OF THE CROSS SECTION OF THE CLOSED PORTION.
 3. WHEN THE SIDE ROAD LIES BETWEEN THE BEGINNING OF THE MAINLINE SIGNING AND THE WORK ZONE, A SINGLE HEADED ARROW (M6-1) SHALL BE USED IN LIEU OF THE DOUBLE HEADED ARROW (M6-4).
- B. FOR A LANE CLOSURE ON A SIDE ROAD OR DRIVEWAY :

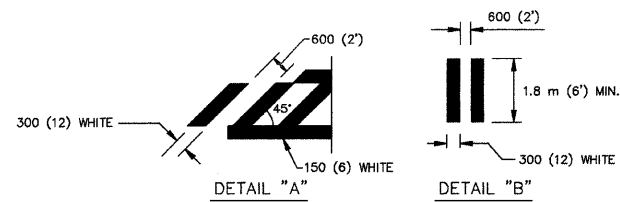
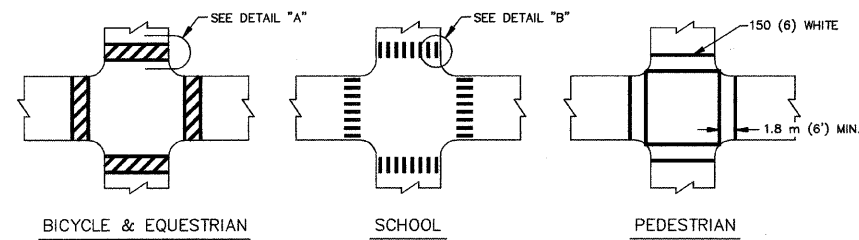
USE APPLICABLE PORTIONS OF THE TYPICAL APPLICATION OF TRAFFIC CONTROL DEVICES (STD. 701501, STD. 701606 OR THE APPROPRIATE STANDARD). THE SPACING OF SIGNS AND BARRICADES SHALL BE ADJUSTED FOR FIELD CONDITIONS AS DIRECTED BY THE ENGINEER. THE DIRECTIONAL ARROW SHALL BE COVERED OR REMOVED WHEN NO LONGER CONSISTENT WITH THE SIDE ROAD LANE CLOSURE.
- C. ADVANCE WARNING SIGNS ARE TO BE OMITTED ON DRIVEWAY UNLESS OTHERWISE NOTED.
- D. THE TRAFFIC CONTROL AND PROTECTION FOR SIDE ROADS, INTERSECTIONS AND DRIVEWAYS SHALL BE INCIDENTAL TO THE COST OF SPECIFIED TRAFFIC CONTROL STANDARDS OR ITEMS.

All dimensions are in millimeters (inches) unless otherwise shown.

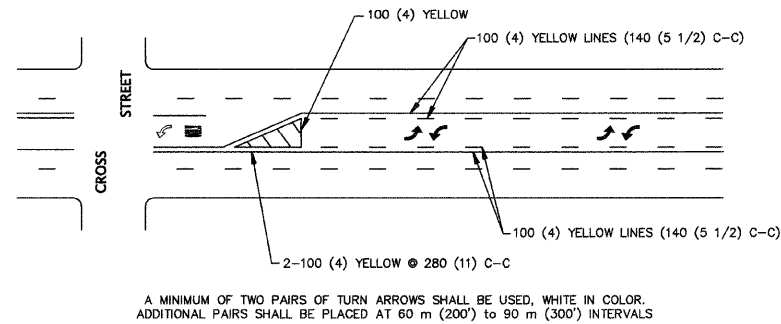
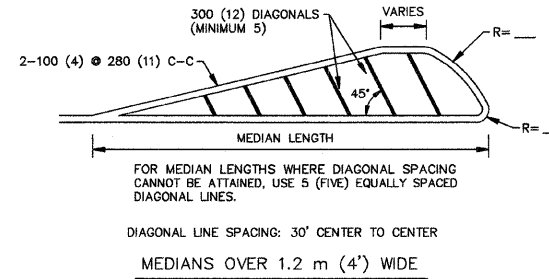
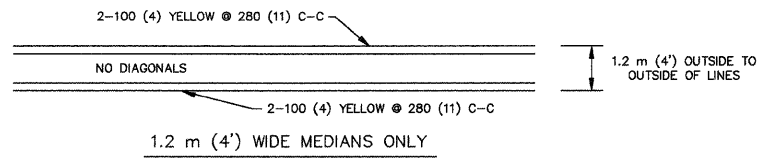


NOTE: MEDIANS WITH BARRIER CURB DO NOT REQUIRE AN EDGE LINE

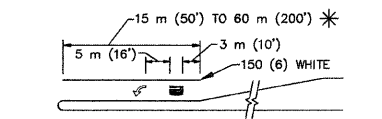
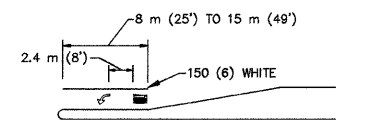
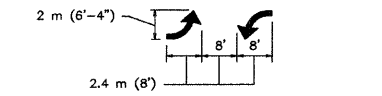
TYPICAL LANE AND EDGE LINE MARKING



TYPICAL CROSSWALK MARKING



TYPICAL PAINTED MEDIAN MARKING

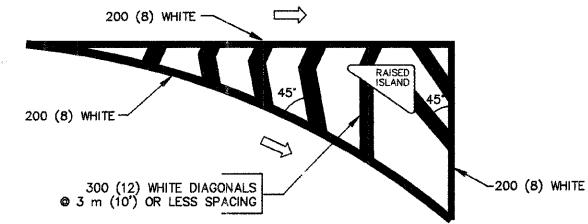


FULL SIZE LETTERS 2.4 m (8') AND ARROWS SHALL BE USED.

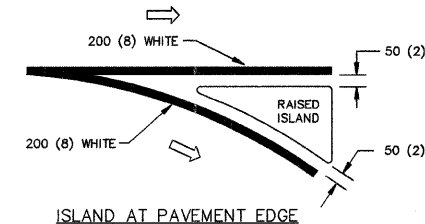
AREA = 1.5 m² (15.6 SQ. FT.)

AREA = 1.9 m² (20.8 SQ. FT.)

TYPICAL LEFT (OR RIGHT) TURN LANE
TYPICAL TURN LANE MARKING



ISLAND OFFSET FROM PAVEMENT EDGE



TYPICAL ISLAND MARKING

TYPE OF MARKING	WIDTH OF LINE	PATTERN	COLOR	SPACING / REMARKS
CENTERLINE ON 2 LANE PAVEMENT	100 (4)	SKIP-DASH	YELLOW	3 m (10') LINE WITH 9 m (30') SPACE
CENTERLINE ON MULTI-LANE UNDIVIDED PAVEMENT	2 @ 100 (4)	SOLID	YELLOW	280 (11) C-C
NO PASSING ZONE LINES: FOR ONE DIRECTION FOR BOTH DIRECTIONS	100 (4) 2 @ 100 (4)	SOLID SOLID	YELLOW YELLOW	140 (5 1/2) C-C FROM SKIP-DASH CENTERLINE 280 (11) C-C OMIT SKIP-DASH CENTERLINE BETWEEN
LANE LINES	100 (4) 125 (5) ON FREEWAYS	SKIP-DASH SKIP-DASH	WHITE WHITE	3 m (10') LINE WITH 9 m (30') SPACE
DOTTED LINES (EXTENSIONS OF CENTER, LANE OR TURN LANE MARKINGS)	SAME AS LINE BEING EXTENDED	SKIP-DASH	SAME AS LINE BEING EXTENDED	600 (2') LINE WITH 1.8 m (6') SPACE
EDGE LINES	100 (4)	SOLID	YELLOW-LEFT WHITE-RIGHT	OUTLINE MOUNTABLE MEDIANS IN YELLOW; EDGE LINES ARE NOT USED NEXT TO BARRIER CURB
TURN LANE MARKINGS	150 (6) LINE, FULL SIZE LETTERS & SYMBOLS (2.4 m (8'))	SOLID	WHITE	SEE TYPICAL TURN LANE MARKING DETAIL
TWO WAY LEFT TURN MARKING	2 @ 100 (4) EACH DIRECTION (2.4 m (8') LEFT ARROW	SKIP-DASH AND SOLID IN PAIRS	YELLOW WHITE	3 m (10') LINE WITH 9 m (30') SPACE FOR SKIP-DASH, 140 (5 1/2) C-C BETWEEN SOLID LINE AND SKIP-DASH LINE SEE TYPICAL TWO-WAY LEFT TURN MARKING DETAIL
CROSSWALK LINES (PEDESTRIAN) A. DIAGONALS (BIKE & EQUESTRIAN) B. LONGITUDINAL BARS (SCHOOL)	2 & 150 (6) 300 (12) 45° 300 (12) 90°	SOLID SOLID SOLID	WHITE WHITE WHITE	NOT LESS THAN 1.8 m (6') APART 600 (2') APART 800 (2') APART SEE TYPICAL CROSSWALK MARKING DETAILS.
STOP LINES	600 (24)	SOLID	WHITE	PLACE 1.2 m (4') IN ADVANCE OF AND PARALLEL TO CROSSWALK, IF PRESENT. OTHERWISE, PLACE AT DESIRED STOPPING POINT, PARALLEL TO CROSSROAD CENTERLINE, WHERE POSSIBLE
PAINTED MEDIANS	2 @ 100 (4) WITH 300 (12) DIAGONALS @ 45° NO DIAGONALS USED FOR 1.2 m (4') WIDE MEDIANS	SOLID	YELLOW: TWO WAY TRAFFIC WHITE: ONE WAY TRAFFIC	280 (11) C-C FOR THE DOUBLE LINE SEE TYPICAL PAINTED MEDIAN MARKING
GORE MARKING AND CHANNELIZING LINES	200 (8) WITH 300 (12) DIAGONALS @ 45°	SOLID	WHITE	DIAGONALS: 4.5 m (15') C-C (LESS THAN 50 km/h (30 MPH)) 6 m (20') C-C (50 km/h (30 MPH) TO 70 km/h (45 MPH)) 9 m (30') C-C (OVER 70 km/h (45 MPH))
RAILROAD CROSSING	600 (24) TRANSVERSE LINES: "RR" IS 1.8 m (6') LETTERS: 400 (16) LINE FOR "X"	SOLID	WHITE	SEE STATE STANDARD 780001 AREA OF: "R"=0.33m ² (3.6 SQ. FT.) EACH "X"=5.0m ² (54.0 SQ. FT.)
SHOULDER DIAGONALS	300 (12) @ 45°	SOLID	WHITE - RIGHT YELLOW - LEFT	15 m (50') C-C (LESS THAN 50 km/h (30 MPH)) 25 m (75') C-C (50 km/h (30 MPH) TO 70 km/h (45 MPH)) 45 m (150') C-C (OVER 70 km/h (45 MPH))

FOR FURTHER DETAILS ON PAVEMENT MARKING REFER TO STANDARD SPECIFICATIONS FOR ROAD AND BRIDGE CONSTRUCTION AND STATE STANDARD 780001.

All dimensions are in millimeters (inches) unless otherwise shown.

REVISIONS	
NAME	DATE
EVERS	03-19-90
T. RAMMACHER	10-27-94
ALEX HOUSEH	10-09-96
ALEX HOUSEH	10-17-96
T. RAMMACHER	01-06-00

ILLINOIS DEPARTMENT OF TRANSPORTATION
**DISTRICT ONE
TYPICAL PAVEMENT
MARKINGS**

SCALE: NONE
DATE: 10/18/2002
DRAWN BY: CADD
CHECKED BY: