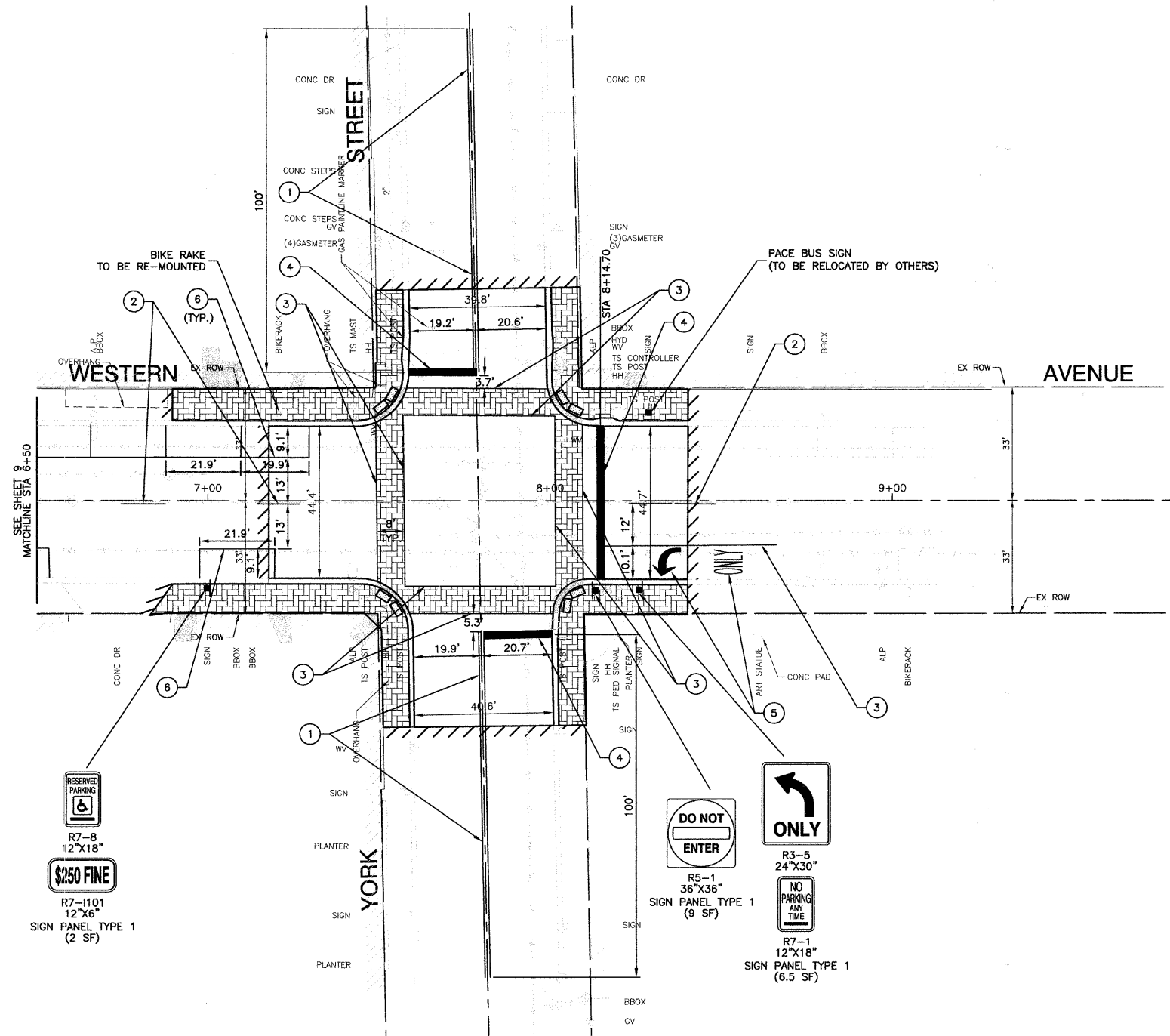
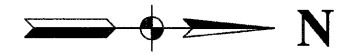


SECTION 36, TOWNSHIP 37, RANGE 13
SECTION 31, TOWNSHIP 37, RANGE 14



- PAVEMENT MARKING LEGEND**
- ① POLYUREA DOUBLE 4" YELLOW CENTERLINE (11" C/C)
 - ② POLYUREA 4" WHITE SKIP - DASH LINE (10' LINE - 30' SPACE)
 - ③ POLYUREA 6" WHITE LINE
 - ④ POLYUREA 24" WHITE STOP BAR
 - ⑤ POLYUREA WHITE LETTERS & SYMBOLS
 - ⑥ 4" WHITE PAINT PARKING LINE
 - ⚡ PROPOSED TRAFFIC SIGN (W/TELESCOPING STEEL SIGN SUPPORT)

BENCH MARK: BIS 189
SE BOLT OF LIGHT POLE AT NW CORNER
OF WESTERN AVENUE AND YORK STREET
ELEVATION=640.75 NGVD 29 DATUM

FILE NAME = 09285-PLPR-01 - IDOT PLPR06	USER NAME =	DESIGNED -- HLG	REVISED --	STATE OF ILLINOIS DEPARTMENT OF TRANSPORTATION	INTERSECTION ENHANCEMENTS PAVEMENT MARKING AND SIGNAGE			F.A.P. RTE.	SECTION	COUNTY	TOTAL SHEETS	SHEET NO.	
		CHECKED -- HLG	REVISED --		0370	09-00183-00-SP	COOK	16	10				
	PLOT SCALE =	DRAWN -- PS	REVISED --		SCALE: 1" = 20'			SHEET NO. 10 OF 16 SHEETS STA. TO STA.			CONTRACT NO. 63313		
	PLOT DATE =	CHECKED -- AG	REVISED --					FED. ROAD DIST. NO. 1 ILLINOIS FED. AID PROJECT ARA-9003 (338)					