




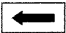
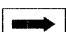



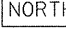
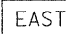
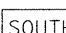
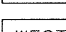
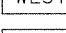
ROUTE MARKERS

-  FOR U.S. ROUTES
M1-40-2424
-  FOR ILLINOIS ROUTES
M1-50-2424
-  R.R. UNMARKED ROUTES
SPECIAL 24" x 18" VARIABLE
4" BLACK LETTERS ON WHITE
REFLECTIVE BACKGROUND

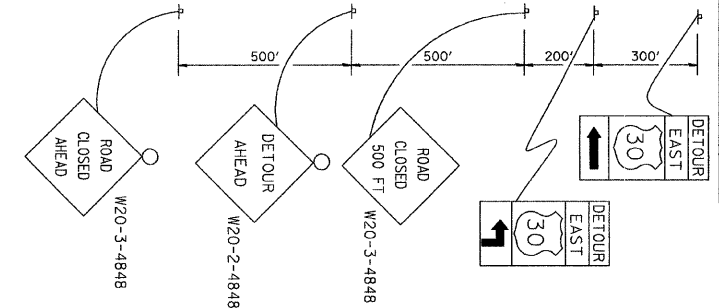
ARROWS SIGNS

-  M5-1L-2115
-  M5-1R-2115
-  M6-1-2115
-  M6-1-2115
-  M6-3-2115

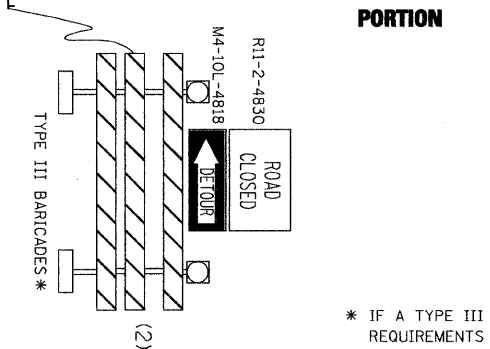
CARDINAL DIRECTION & DETOUR SIGNS

-  NORTH M3-1-2412
-  EAST M3-2-2412
-  SOUTH M3-3-2412
-  WEST M3-4-2412
-  DETOUR M4-8-2412

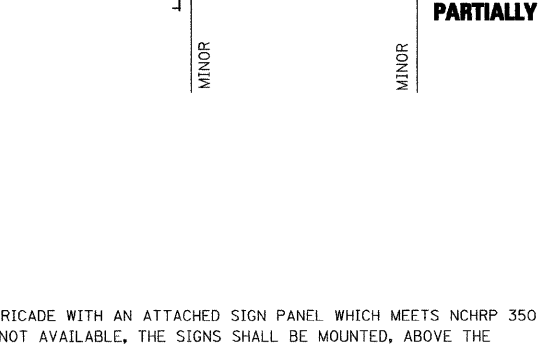
STATE ROUTE



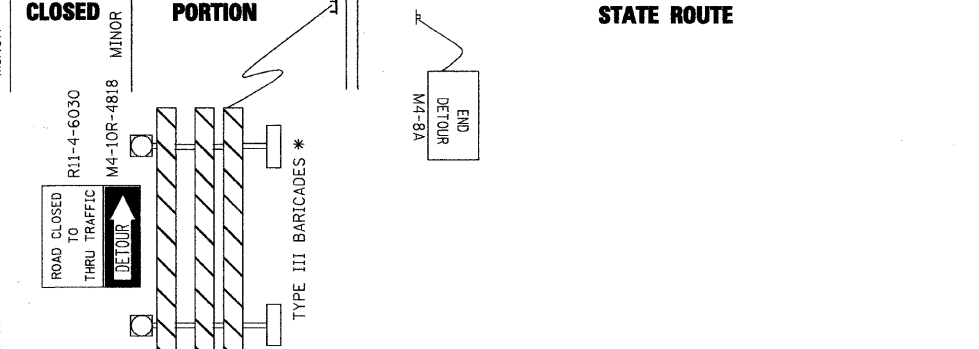
COMPLETELY CLOSED PORTION



PARTIALLY CLOSED PORTION



STATE ROUTE



* IF A TYPE III BARRICADE WITH AN ATTACHED SIGN PANEL WHICH MEETS NCHRP 350 REQUIREMENTS IS NOT AVAILABLE, THE SIGNS SHALL BE MOUNTED, ABOVE THE BARRICADES, ON SEPARATE SIGNS SUPPORTS THAT MEET NCHRP 350 REQUIREMENTS.

FILE NAME =	USER NAME = drivakosgn	DESIGNED -	REVISED - 10-18-02
\\pwwork\pwwidot\DRIVAKOSGN\d0188315\21.dgn		DRAWN -	REVISED - R. BORO 09-14-09
	PLOT SCALE = 49.9999' / IN.	CHECKED -	REVISED -
	PLOT DATE = 9/14/2009	DATE -	REVISED -

**STATE OF ILLINOIS
DEPARTMENT OF TRANSPORTATION**

DISTRICT ONE
TYPICAL MARKINGS FOR CLOSING STATE HIGHWAYS
DETAILS

SCALE: NONE SHEET NO. 15 OF 16 SHEETS STA. TO STA.

F.A.P. RTE.	SECTION	COUNTY	TOTAL SHEETS	SHEET NO.
0370	09-00183-00-SP	COOK	16	15
TC-21			CONTRACT NO. 63313	
FED. ROAD DIST. NO. 1 ILLINOIS FED. AID PROJECT ARA-9003 (338)				