

SECTION 36, TOWNSHIP 37, RANGE 13  
SECTION 31, TOWNSHIP 37, RANGE 14

# STATE OF ILLINOIS DEPARTMENT OF TRANSPORTATION DIVISION OF HIGHWAYS

## PLANS FOR PROPOSED FEDERAL AID HIGHWAY

**WESTERN AVENUE (FAP 0370) & VERMONT STREET (FAU 1594)  
WESTERN AVENUE (FAP 0370) & YORK STREET  
INTERSECTION ENHANCEMENTS**

**PROJECT NO.: ARA-9003 (338)  
L.A. SECTION NO.: 09-00183-00-SP  
JOB NO.: C-91-654-09  
CITY of BLUE ISLAND  
COOK COUNTY**

F. A. P. NO.	SECTION	COUNTY	TOTAL SHEETS	SHEET NO.
0370	09-00183-00-SP	COOK	16	1
STA.		TO STA.		
FED. ROAD DIST. NO. 1		ILLINOIS	FED. AID PROJECT ARA-9003 (338)	

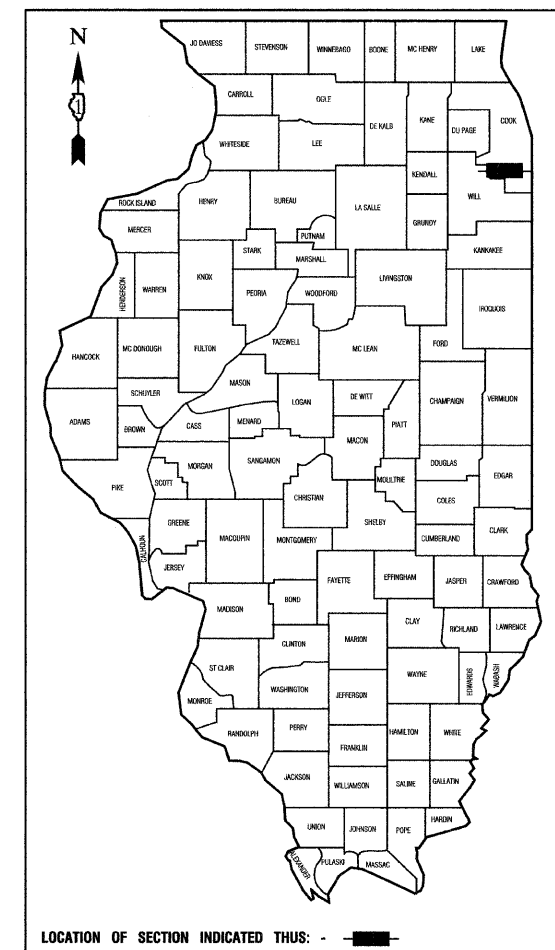
CONTRACT #63313

### INDEX OF SHEETS

1. COVER SHEET
2. SUMMARY OF QUANTITIES & GENERAL NOTES
3. TYPICAL CROSS SECTIONS
4. DETOUR PLAN
- 5.-6. REMOVAL PLAN
- 7.-8. PLAN & PROFILE SHEETS
- 9.-11. PAVEMENT MARKING AND SIGNAGE PLAN
- 12.-16. DISTRICT ONE STANDARD DETAILS

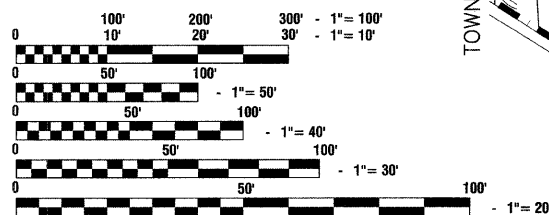
### HIGHWAY STANDARDS

- |           |  |
|-----------|--|
| 000001-05 | STANDARD SYMBOLS, ABBREVIATIONS AND PATTERNS                       |
| 420001-07 | PAVEMENT JOINTS  |
| 420111-02 | PCC PAVEMENT ROUNDOFFS   |
| 420601-05 | 24' PCC PAVEMENT   |
| 420701-02 | PAVEMENT FABRIC  |
| 424001-05 | CURB RAMPS FOR SIDEWALKS   |
| 606001-04 | CONCRETE CURB TYPE B AND COMBINATION CONCRETE CURB AND GUTTER      |
| 701006-03 | OFF-RD OPERATIONS, 2L, 2W, 15' TO 24" FROM PAVEMENT EDGE           |
| 701501-05 | URBAN LANE CLOSURE, 2L, 2W, UNDIVIDED                              |
| 701601-06 | URBAN LANE CLOSURE, MULTILANE, 1W OR 2W WITH NONTRAVERSABLE MEDIAN |
| 701701-06 | URBAN LANE CLOSURE, MULTILANE INTERSECTION                         |
| 701801-04 | LANE CLOSURE MULTILANE 1W OR 2W CROSSWALK OR SIDEWALK CLOSURE      |
| 701901-01 | TRAFFIC CONTROL DEVICES  |
| 720001-01 | SIGN PANEL MOUNTING DETAILS  |
| 720006-02 | SIGN PANEL ERECTION DETAILS  |
| 728001-01 | TELESCOPING STEEL SIGN SUPPORT                                     |
| 780001-02 | TYPICAL PAVEMENT MARKINGS  |



WESTERN AVENUE  
ADT = 8,400 (2009)  
DESIGN SPEED = 25 MPH  
SPEED LIMIT = 25 MPH

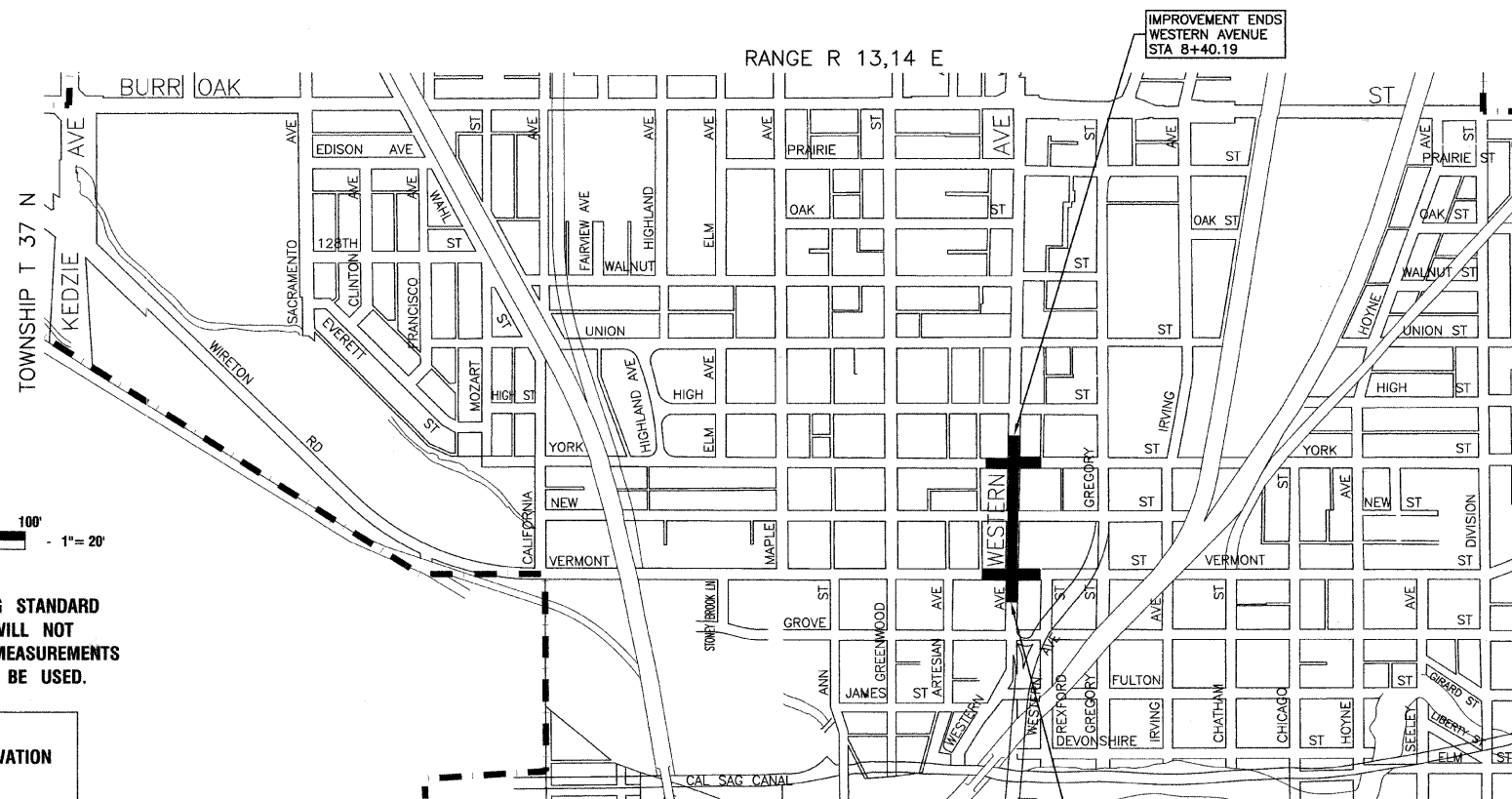
SCALES  
PLAN - 1"=20'  
PROFILE HORIZ. - 1"=50'  
PROFILE VERT. - 1"=5'



FULL SIZE PLANS HAVE BEEN PREPARED USING STANDARD ENGINEERING SCALES, REDUCED SIZED PLANS WILL NOT CONFORM TO STANDARD SCALES, IN MAKING MEASUREMENTS ON REDUCED PLANS, THE ABOVE SCALES MAY BE USED.

J. U. L. I. E.  
JOINT UTILITY LOCATION INFORMATION FOR EXCAVATION  
1-800-892-0123 or 811

CONTRACT NO. 63313



LOCATION MAP

GROSS LENGTH=750 FEET=0.14 MILES  
NET LENGTH=750 FEET=0.14 MILES

IMPROVEMENT BEGINS  
WESTERN AVENUE  
STA 0+91.81

IMPROVEMENT ENDS  
WESTERN AVENUE  
STA 8+40.19

I.D.O.T. FEDERAL AID DESIGN ENGINEER: MELCHOR MANGOBA 847-705-4408  
CONSULTANTS: ROBINSON ENGINEERING, LTD. 708-331-6700

STATE OF ILLINOIS DEPARTMENT OF TRANSPORTATION  
DIVISION OF HIGHWAYS

Approved: [Signature]  
10/13/09  
Mayor, City of Blue Island

Passed: OCTOBER 26, 2009  
[Signature]  
District 1 Engineer of Local Roads & Streets

Released for Bid Based on Limited Review: OCTOBER 26, 2009  
[Signature]  
Deputy Director of Highways, Region 1 Engineer

PRINTED BY THE AUTHORITY OF THE STATE OF ILLINOIS

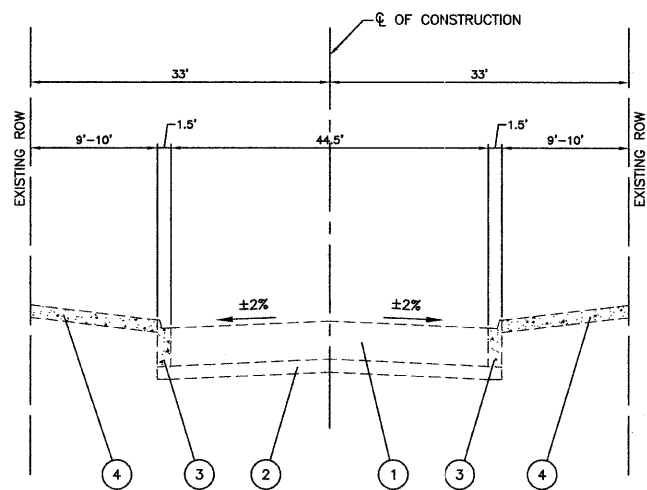
PREPARED BY OR UNDER THE DIRECT SUPERVISION OF:  
[Signature]  
10/13/09

SUMMARY OF QUANTITIES					PAVEMENT	
S.I.	CODE NO.	PAY ITEM	UNIT	QUAN	CONSTRUCTION TYPE CODE	
					1000	
	28000510	INLET FILTERS	EACH	7	7	
	31101200	SUB-BASE GRANULAR MATERIAL, TYPE B 4"	SQ YD	2076	2076	
	42001100	HIGH-EARLY-STRENGTH PORTLAND CEMENT CONCRETE PAVEMENT 10"	SQ YD	1590	1590	
	42001300	PROTECTIVE COAT	SQ YD	1913	1913	
	42400800	DETECTABLE WARNINGS	SQ FT	128	128	
	44000100	PAVEMENT REMOVAL	SQ YD	1936	1936	
	44000500	COMBINATION CURB AND GUTTER REMOVAL	FOOT	603	603	
	44000600	SIDEWALK REMOVAL	SQ FT	5294	5294	
	56500600	DOMESTIC WATER SERVICE BOXES TO BE ADJUSTED	EACH	3	3	
	60255500	MANHOLES TO BE ADJUSTED	EACH	6	6	
	60266600	VALVE BOXES TO BE ADJUSTED	EACH	7	7	
	60250200	CATCH BASINS TO BE ADJUSTED	EACH	7	7	
	60265700	VALVE VAULTS TO BE ADJUSTED	EACH	10	10	
	60603800	COMBINATION CONCRETE CURB AND GUTTER, TYPE B-6.12	FOOT	610	610	
	67100100	MOBILIZATION	L SUM	1	1	
	70101800	TRAFFIC CONTROL AND PROTECTION, (SPECIAL)	L SUM	1	1	
	70102550	TRAFFIC CONTROL AND PROTECTION FOR TEMPORARY DETOUR	EACH	1	1	
	70106800	CHANGEABLE MESSAGE SIGN	CAL MO	9	9	
	72000100	SIGN PANEL - TYPE 1	SQ FT	36	36	
	72400100	REMOVE SIGN PANEL ASSEMBLY - TYPE A	EACH	4	4	
	72400200	REMOVE SIGN PANEL ASSEMBLY - TYPE B	EACH	1	1	
	72800100	TELESCOPING STEEL SIGN SUPPORT	FOOT	100	100	
*	78001110	PAINT PAVEMENT MARKING - LINE 4"	FOOT	900	900	
*	78008200	POLYUREA PAVEMENT MARKING TYPE I - LETTERS AND SYMBOLS	SQ FT	217	217	
*	78008210	POLYUREA PAVEMENT MARKING TYPE I - LINE 4"	FOOT	1352	1352	
*	78008230	POLYUREA PAVEMENT MARKING TYPE I - LINE 6"	FOOT	1544	1544	
*	78008270	POLYUREA PAVEMENT MARKING TYPE I - LINE 24"	FOOT	208	208	
*	78300100	PAVEMENT MARKING REMOVAL	SQ FT	736	736	
	XX008232	BICYCLE RACKS TO BE MOVED	EACH	1	1	
	XX005370	PATTERN, COLOR, PORTLAND CEMENT SIDEWALK, 5 INCH, SPECIAL	SQ FT	5548	5548	
	X0322256	TEMPORARY INFORMATION SIGNING	SQ FT	155	155	
	XX008225	HIGH-EARLY-STRENGTH PORTLAND CEMENT CONCRETE PAVEMENT 10", STAMPED & COLORED	SQ YD	325	325	

\* - INDICATES SPECIALTY ITEMS

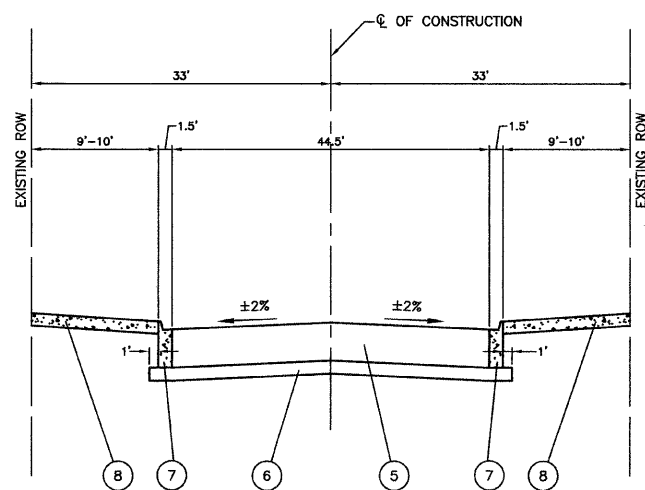
**GENERAL NOTES**

- BEFORE STARTING ANY EXCAVATION, THE CONTRACTOR SHALL CALL J.U.L.I.E. AT (800) 892-0123 FOR FIELD LOCATIONS OF BURIED ELECTRIC, TELEPHONE AND GAS UTILITIES. (48 HOUR NOTIFICATION IS REQUIRED).
- BOTH THE ROBINSON ENGINEERING, LTD. FIELD OFFICE (708-331-6700) AND THE CITY OF BLUE ISLAND (708-597-1221) SHALL BE NOTIFIED TWO (2) WORKING DAYS BEFORE CONSTRUCTION BEGINS.
- WHEN IN THE CONSTRUCTION OPERATION, ANY LOOSE MATERIAL IS DEPOSITED IN THE FLOW LINE OF GUTTERS, OR OTHER DRAINAGE STRUCTURES SO THAT THE NATURAL FLOW OF WATER IS OBSTRUCTED, IT SHALL BE REMOVED AT THE CLOSE OF EACH DAY BY THE CONTRACTOR AT HIS EXPENSE.
- EXISTING DRAINAGE FACILITIES SHALL NOT BE UNNECESSARILY DISTURBED. THE CONTRACTOR SHALL PROVIDE TEMPORARY DRAINAGE FACILITIES WHEREVER NECESSARY TO MAINTAIN EXISTING DRAINAGE OUTLETS. THIS WORK SHALL BE INCLUDED IN THE COST OF CONTRACT.
- AREAS DISTURBED BY CONSTRUCTION SHALL BE KEPT TO A MINIMUM. ALL AREAS DISTURBED UNNECESSARILY SHALL BE RESTORED AS REQUIRED IN THE SPECIAL PROVISIONS AT THE CONTRACTOR'S EXPENSE.
- ALL PAVEMENT, CURB AND SIDEWALK REMOVALS, INCLUDING PAVEMENT AND SIDEWALK TO BE REMOVED BETWEEN CONSTRUCTION STAGES, SHALL BE MADE BY MEANS OF A STRAIGHT SAW CUT JOINT. THIS WORK SHALL NOT BE PAID FOR SEPARATELY, BUT SHALL BE INCLUDED IN THE UNIT PRICE BID FOR THE VARIOUS ITEMS.
- THE APPROXIMATE LOCATION OF KNOWN PUBLIC UTILITIES ARE PROVIDED FOR THE CONTRACTOR'S USE, AND ARE BASED UPON INFORMATION AVAILABLE AT THE TIME OF THE ADVERTISEMENT FOR BIDS. THE OWNER AND ENGINEER DO NOT GUARANTEE THE ACCURACY OF UTILITIES INFORMATION. IT SHALL BE THE CONTRACTOR'S RESPONSIBILITY TO NOTIFY J.U.L.I.E. AT LEAST 48 HOURS PRIOR TO EXCAVATION TO VERIFY LOCATIONS OF ALL UTILITIES.
- TO THE EXTENT FEASIBLE, SIDEWALK ACCESS SHALL BE MAINTAINED AT ALL TIMES. WHEN NECESSARY, AND APPROVED IN ADVANCE BY THE ENGINEER, CLOSED SIDEWALKS SHALL BE BARRICADED. EXCAVATED AREAS ADJACENT TO SIDEWALKS SHALL BE PROTECTED BY THE CONTRACTOR TO PROHIBIT PEDESTRIAN ENTRY INTO THE WORK ZONE. TEMPORARY ACCESS TO BUILDING ENTRANCES SHALL BE MAINTAINED AT ALL TIMES AND AS OTHERWISE DESCRIBED IN THE SPECIAL PROVISION ENTITLED "PEDESTRIAN SIDEWALK CONTROL".
- THE CITY OF BLUE ISLAND (708-597-1221) SHALL BE NOTIFIED PRIOR TO THE OPENING OR CLOSING OF ALL WATER VALVES, FIRE HYDRANTS, AND/OR OTHER WATER SYSTEM APPURTENANCES.
- CONTRACTOR SHALL BE RESPONSIBLE AT ALL TIMES FOR TRAFFIC CONTROL AND PROTECTION IN ACCORDANCE WITH IDOT STANDARD SPECIFICATIONS ADOPTED JANUARY 1, 2007, THE LATEST EDITION OF THE ILLINOIS MANUAL ON UNIFORM TRAFFIC CONTROL DEVICES FOR STREETS AND HIGHWAYS, AND THE STANDARD SPECIFICATIONS FOR TRAFFIC CONTROL ITEMS.
- THE TOP OF ALL MANHOLES, VALVE VAULTS, CATCH BASINS, WATER VALVES, AND WATER SERVICE BOXES SHALL BE FLUSH WITH THE ADJACENT PROPOSED SURFACE OR THE INDICATED ELEVATION SHOWN ON THE PLANS. FRAME ELEVATIONS ARE GIVEN ONLY TO ASSIST IN DETERMINING THE OVERALL HEIGHT OF THE STRUCTURE.
- ITEMS OF WORK LISTED IN THE SUMMARY OF QUANTITIES NOT SPECIFICALLY CALLED OUT ON THE PLANS SHALL BE PERFORMED AS DIRECTED BY THE ENGINEER.
- IT SHALL BE THE CONTRACTOR'S RESPONSIBILITY TO VERIFY ALL DIMENSIONS AND CONDITIONS EXISTING IN THE FIELD PRIOR TO CONSTRUCTION AND ORDERING OF MATERIALS.
- CONTRACTOR SHALL PROVIDE THE ENGINEER WITH VIDEOTAPE DETAILING ALL SURFACE CONDITIONS WITHIN THE PROJECT AREA PRIOR TO EXCAVATION AND SHALL BE INCLUDED IN THE COST OF THE CONTRACT. ALL RESTORATION SHALL BE COMPLETED TO THE SATISFACTION OF THE OWNER AND ENGINEER.
- ALL CONSTRUCTION OPERATIONS SHALL BE IN ACCORDANCE WITH THE IDOT STANDARD SPECIFICATIONS ADOPTED JANUARY 1, 2007.
- THE CONTRACTOR'S ATTENTION IS CALLED TO THE FACT THAT THE CONTRACTOR AND/OR SUBCONTRACTORS BEAR THE RESPONSIBILITY OF PROTECTION OF FRESH CONCRETE BEFORE IT HAS SET. ANY DAMAGE AND/OR VANDALISM TO THE CONCRETE SHALL BE REPAIRED TO THE SATISFACTION OF THE ENGINEER AT THE CONTRACTOR'S EXPENSE.
- CONTRACTOR TO PREPARE AND SUBMIT AN INTERSECTION JOINTING PATTERN TO THE ENGINEER FOR APPROVAL PRIOR TO THE START OF CONSTRUCTION.



**EXISTING TYPICAL CROSS SECTION**

WESTERN AVENUE  
 STA 0+91.81 TO STA 2+09.45  
 STA 7+17.83 TO STA 8+40.19



**PROPOSED TYPICAL CROSS SECTION**

WESTERN AVENUE  
 STA 0+91.81 TO STA 2+09.45  
 STA 7+17.83 TO STA 8+40.19

**EXISTING LEGEND**

- ① EXISTING PAVEMENT TO BE REMOVED - (±4" BITUMINOUS & ±10" P.C. CONCRETE)
- ② EXISTING SUBGRADE TO REMAIN
- ③ EXISTING CURB & GUTTER TO BE REMOVED
- ④ EXISTING P.C. CONCRETE SIDEWALK TO BE REMOVED

**PROPOSED LEGEND**

- ⑤ PROPOSED HIGH-EARLY-STRENGTH PORTLAND CEMENT CONCRETE PAVEMENT, 10" OR PROPOSED HIGH-EARLY-STRENGTH PORTLAND CEMENT CONCRETE PAVEMENT, 10", STAMPED & COLORED (IN CROSSWALKS)
- ⑥ PROPOSED SUB-BASE GRANULAR MATERIAL, TYPE B, 4"
- ⑦ PROPOSED COMBINATION CONCRETE CURB AND GUTTER, TYPE B-6.12
- ⑧ PROPOSED PATTERN, COLOR, PORTLAND CEMENT CONCRETE SIDEWALK, 5", SPECIAL

FILE NAME = 09285-TYPX-01 - IDOT P01

USER NAME =	DESIGNED -- HLG	REVISED --
	CHECKED -- HLG	REVISED --
PLOT SCALE =	DRAWN -- PS	REVISED --
PLOT DATE =	CHECKED -- AG	REVISED --

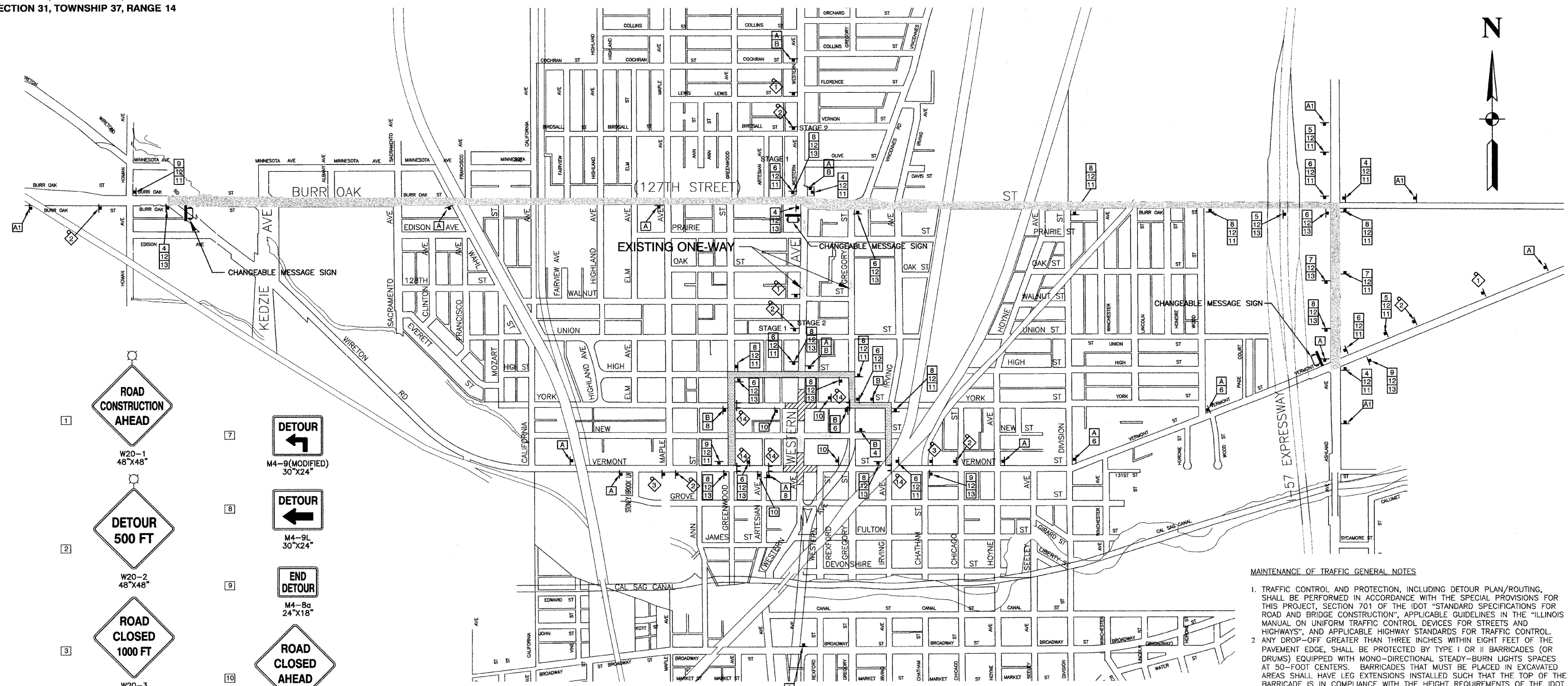
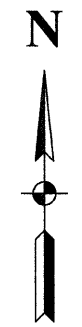
STATE OF ILLINOIS  
 DEPARTMENT OF TRANSPORTATION

INTERSECTION ENHANCEMENTS  
 WESTERN AVENUE, VERMONT STREET, & YORK STREET  
 TYPICAL CROSS SECTIONS

SCALE: NONE SHEET NO. 3 OF 16 SHEETS STA. TO STA.

F.A.P. RTE.	SECTION	COUNTY	TOTAL SHEETS	SHEET NO.
0370	09-00183-00-SP	COOK	16	3
FED. ROAD DIST. NO. 1 ILLINOIS			CONTRACT NO. 63313	
FED. AID PROJECT ARA-9003 (338)				

SECTION 36, TOWNSHIP 37, RANGE 13  
SECTION 31, TOWNSHIP 37, RANGE 14



- 1 ROAD CONSTRUCTION AHEAD  
W20-1  
48"x48"
- 2 DETOUR 500 FT  
W20-2  
48"x48"
- 3 ROAD CLOSED 1000 FT  
W20-3  
48"x48"
- 4 DETOUR  
M4-9  
30"x24"
- 5 DETOUR  
M4-9(MODIFIED)  
30"x24"
- 6 DETOUR  
M4-9R  
30"x30"
- 7 DETOUR  
M4-9(MODIFIED)  
30"x24"
- 8 DETOUR  
M4-9L  
30"x24"
- 9 END DETOUR  
M4-8a  
24"x18"
- 10 ROAD CLOSED AHEAD  
W20-3  
48"x48"
- 11 WEST  
M3-4  
24"x12"
- 12 VERMONT STREET  
D3-1  
36"x6"
- 13 EAST  
M3-2  
24"x12"
- 14 ROAD CLOSED TO THRU TRAFFIC  
R11-4  
60"x30"

- A1 VERMONT STREET CLOSED AT WESTERN AVE USE 127TH STREET
- A VERMONT STREET CLOSED AT WESTERN AVE LOCAL TRAFFIC ONLY
- B YORK STREET CLOSED AT WESTERN AVE LOCAL TRAFFIC ONLY

- PLAN LEGEND**
- CONSTRUCTION WARNING SIGN WITH AMBER FLASHING LIGHT & ORANGE WARNING FLAG
  - SUGGESTED DETOUR ROUTE
  - CONSTRUCTION AREA DURING DETOUR
  - LOCAL DETOUR ROUTE
  - TYPE III BARRICADE WITH STEADY BURNING LIGHT
  - SIGN

**MAINTENANCE OF TRAFFIC GENERAL NOTES**

1. TRAFFIC CONTROL AND PROTECTION, INCLUDING DETOUR PLAN/ROUTING, SHALL BE PERFORMED IN ACCORDANCE WITH THE SPECIAL PROVISIONS FOR THIS PROJECT, SECTION 701 OF THE IDOT "STANDARD SPECIFICATIONS FOR ROAD AND BRIDGE CONSTRUCTION", APPLICABLE GUIDELINES IN THE "ILLINOIS MANUAL ON UNIFORM TRAFFIC CONTROL DEVICES FOR STREETS AND HIGHWAYS", AND APPLICABLE HIGHWAY STANDARDS FOR TRAFFIC CONTROL.
2. ANY DROP-OFF GREATER THAN THREE INCHES WITHIN EIGHT FEET OF THE PAVEMENT EDGE, SHALL BE PROTECTED BY TYPE I OR II BARRICADES (OR DRUMS) EQUIPPED WITH MONO-DIRECTIONAL STEADY-BURN LIGHTS SPACES AT 50-FOOT CENTERS. BARRICADES THAT MUST BE PLACED IN EXCAVATED AREAS SHALL HAVE LEG EXTENSIONS INSTALLED SUCH THAT THE TOP OF THE BARRICADE IS IN COMPLIANCE WITH THE HEIGHT REQUIREMENTS OF THE IDOT HIGHWAY STANDARDS.
3. ARROW BOARDS WILL BE REQUIRED WHEN IMPLEMENTING ALL LANE CLOSURES.
4. PRIOR TO THE START OF CONSTRUCTION, REQUIRED TRAFFIC CONTROL DEVICES SHALL BE IN PLACE.
5. IDOT TRAFFIC CONTROL STANDARDS LISTED BY REFERENCE ON THE TITLE SHEET SHALL BE USED AS GUIDES IN IMPLEMENTING THE TRAFFIC CONTROL, INCLUDING SIGN LOCATIONS, FOR THIS PROJECT.
6. MONO-DIRECTIONAL FLASHING LIGHTS AND ORANGE WARNING FLAGS SHALL BE MOUNTED ON ALL "ROAD CONSTRUCTION AHEAD" SIGNS.
7. THE CONTRACTOR SHALL MAINTAIN ACCESS TO ALL PROPERTIES DURING CONSTRUCTION OPERATIONS.
8. DEPICTED TRAFFIC CONTROL IS A MINIMUM REQUIREMENT, AND OTHER WORK OR SIGNING MAY BE REQUIRED AS PER THE INSTRUCTION OF THE ENGINEER IN CHARGE. THE COST INCURRED TO COMPLY WILL BE INCLUDED IN THE PAY ITEMS "TRAFFIC CONTROL AND PROTECTION, SPECIAL" AND "TRAFFIC CONTROL AND PROTECTION FOR TEMPORARY DETOUR".
9. ILLINOIS DEPARTMENT OF TRANSPORTATION, AND THE ENGINEER SHALL BE NOTIFIED IN WRITING AT LEAST THREE WEEKS PRIOR TO THE DAY THE DETOUR IS TO BE IN EFFECT. THE CONTRACTOR WILL CONTACT THE APPROPRIATE LOCAL AGENCIES AND INTERESTED PARTIES.
10. THE CONTRACTOR SHALL PROVIDE THE ENGINEER WITH THE NAMES AND PHONE NUMBERS OF HIS REPRESENTATIVES ON THE CONSTRUCTION SITE AND HIS REPRESENTATIVE RESPONSIBLE FOR THE DETOUR SIGNING, PRIOR TO THE START OF WORK.
11. THE CONTRACTOR SHALL BE RESPONSIBLE FOR THE FIELD LOCATION OF ALL DETOUR AND CONSTRUCTION SIGNING. THE CONTRACTOR MAY REQUEST THE ENGINEER TO FIELD VERIFY THE POSITIONS OF ANY SIGNS.
12. ALL EXISTING SIGNING THAT IS NOT APPLICABLE WHILE THE DETOUR IS IN EFFECT SHALL BE COMPLETELY COVERED, OR REMOVED, BY THE CONTRACTOR IN A MANNER MEETING THE APPROVAL OF THE ENGINEER.
13. ADVANCED CLOSURE SIGNS (CHANGEABLE MESSAGE SIGNS) SHALL BE ERRECTED AT LEAST 10 DAYS PRIOR TO ANY ROAD CLOSURES.
14. THE CONTRACTOR SHALL CONTACT THE TRAFFIC CONTROL SUPERVISOR AT (847) 705-4470, 72 HOURS PRIOR TO THE PLACEMENT OF ANY TEMPORARY TRAFFIC CONTROL DEVICES.

FILE NAME = 09285-DETR01 - P01	USER NAME =	DESIGNED -- HLG	REVISED --
		CHECKED -- HLG	REVISED --
	PLOT SCALE =	DRAWN -- PS	REVISED --
	PLOT DATE =	CHECKED -- AG	REVISED --

STATE OF ILLINOIS  
DEPARTMENT OF TRANSPORTATION

INTERSECTION ENHANCEMENTS WESTERN AVENUE, VERMONT STREET, & YORK STREET DETOUR PLAN		F.A.P. RITE. 0370	SECTION 09-00183-00-SP	COUNTY COOK	TOTAL SHEETS 16	SHEET NO. 4
SCALE: 1" = 500'	SHEET NO. 4 OF 16 SHEETS	STA. TO STA.	CONTRACT NO. 63313			

FED. ROAD DIST. NO. 1	ILLINOIS	FED. AID PROJECT AIA-9003 (336)
-----------------------	----------	---------------------------------



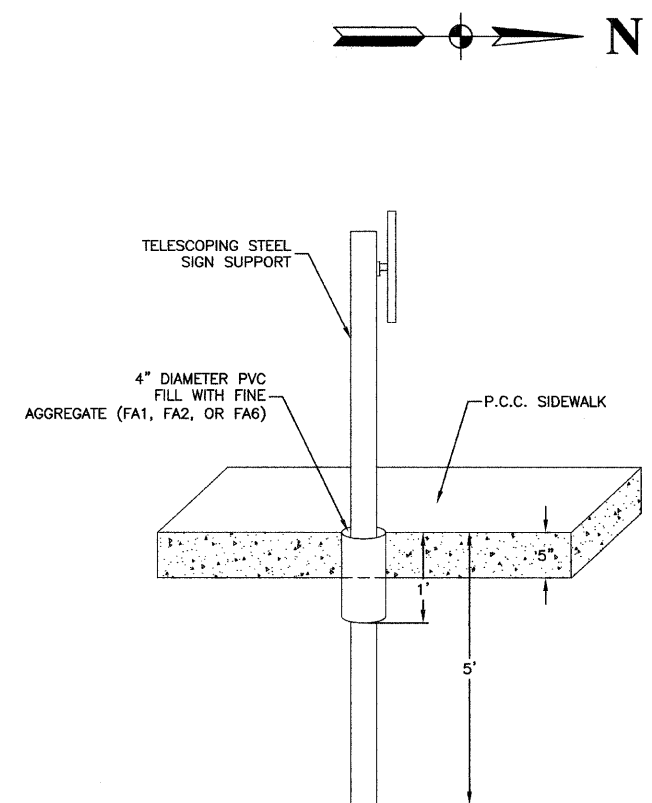
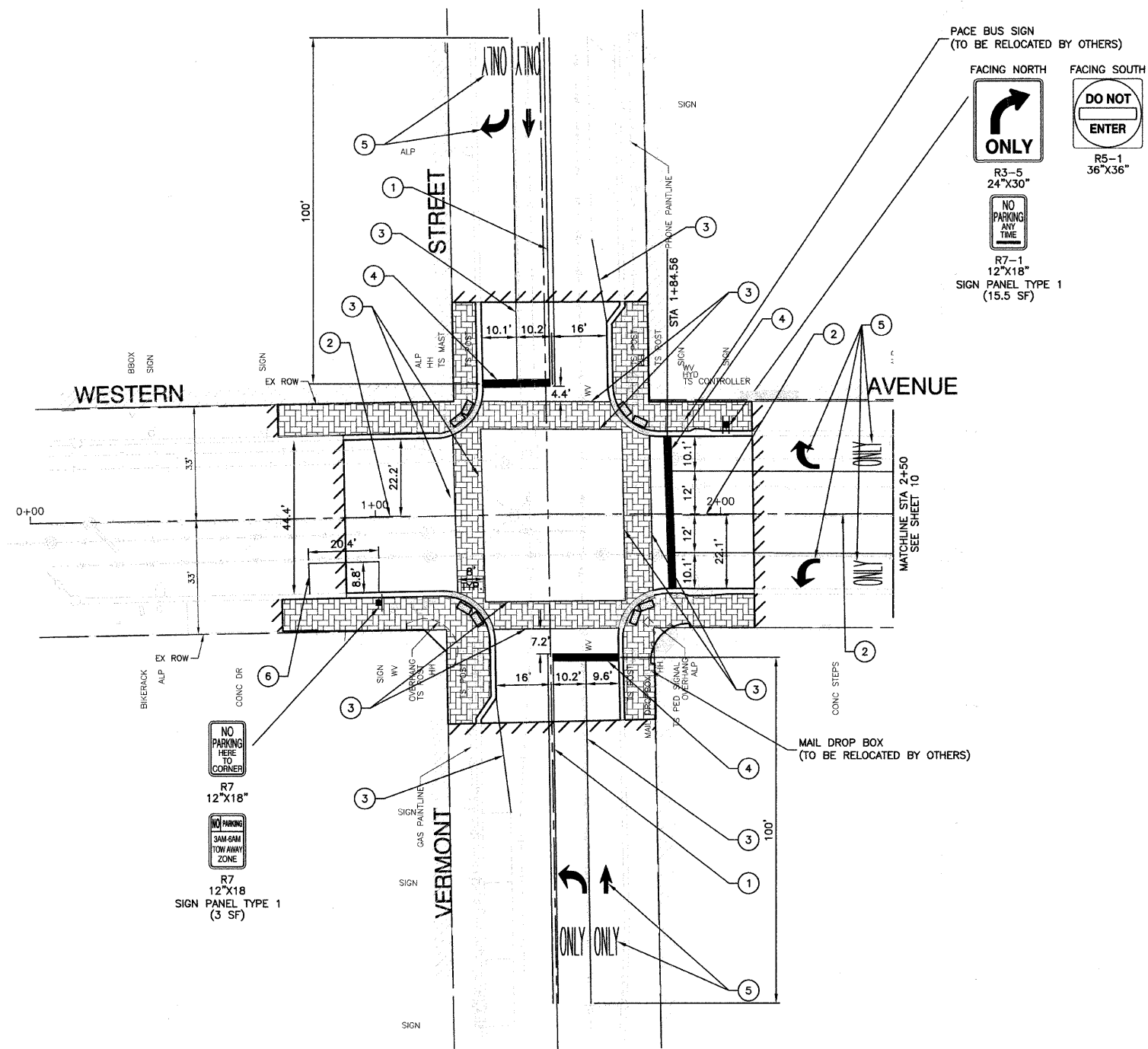








SECTION 36, TOWNSHIP 37, RANGE 13  
SECTION 31, TOWNSHIP 37, RANGE 14



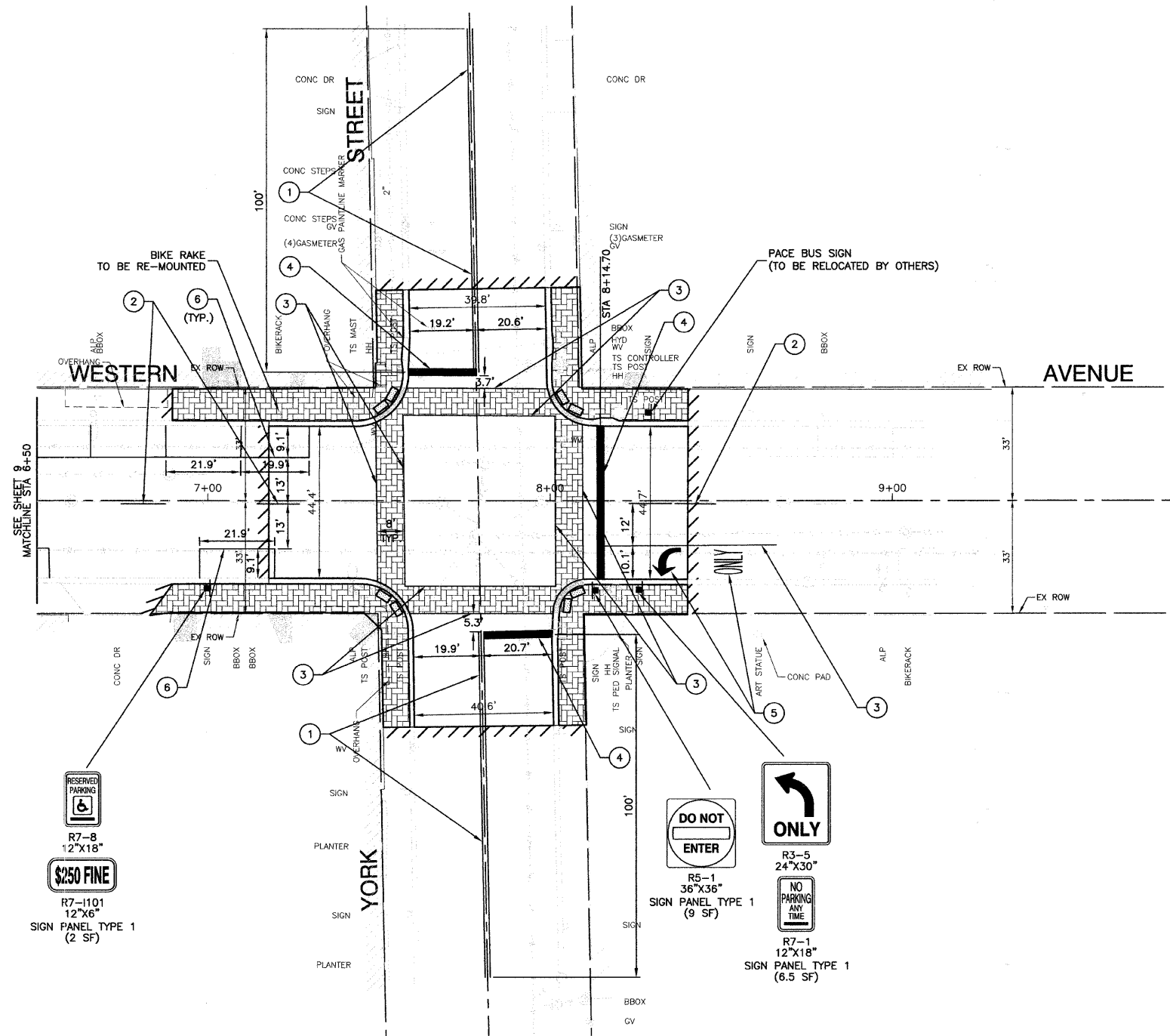
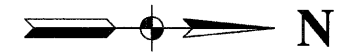
SIGN SUPPORT MOUNTING DETAIL

PAVEMENT MARKING LEGEND

- ① POLYUREA DOUBLE 4" YELLOW CENTERLINE (11" C/C)
- ② POLYUREA 4" WHITE SKIP - DASH LINE (10' LINE - 30' SPACE)
- ③ POLYUREA 6" WHITE LINE
- ④ POLYUREA 24" WHITE STOP BAR
- ⑤ POLYUREA WHITE LETTERS & SYMBOLS
- ⑥ 4" WHITE PAINT PARKING LINE
- ▴ PROPOSED TRAFFIC SIGN (W/TELESCOPING STEEL SIGN SUPPORT)

**BENCH MARK: BIS 19**  
SQUARE CUT IN SE CORNER OF TRAFFIC SIGNAL BASE AT  
NW CORNER OF VERMONT STREET AND WESTERN AVENUE  
ELEVATION=638.565 NGVD 29 DATUM

FILE NAME = 09285-PLPR-01 - IDOT PLPROS	USER NAME =	DESIGNED = HLG	REVISED =	<b>STATE OF ILLINOIS DEPARTMENT OF TRANSPORTATION</b>	INTERSECTION ENHANCEMENTS PAVEMENT MARKING AND SIGNAGE			F.A.P. RTE. = 0370	SECTION = 09-00183-00-SP	COUNTY = COOK	TOTAL SHEETS = 16	SHEET NO. = 9
	PLOT SCALE =	DRAWN = PS	REVISED =		SCALE: 1" = 20'	SHEET NO. 9	OF 16 SHEETS	STA. TO STA.	CONTRACT NO. 63313			
PLOT DATE =	CHECKED = AG	REVISED =						FED. ROAD DIST. NO. 1 ILLINOIS FED. AID PROJECT ARA-9003 (338)				

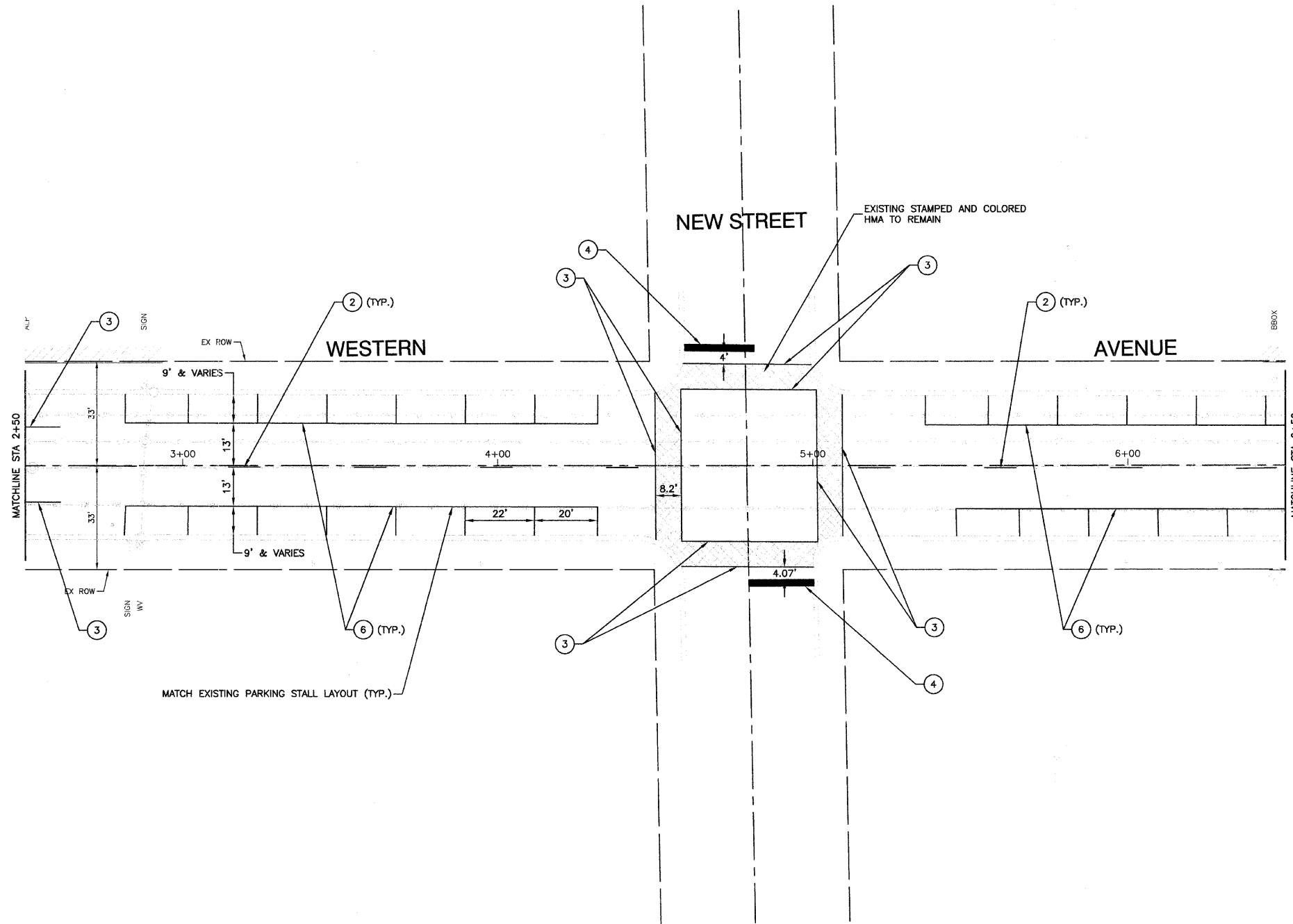
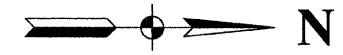


- PAVEMENT MARKING LEGEND**
- ① POLYUREA DOUBLE 4" YELLOW CENTERLINE (11" C/C)
  - ② POLYUREA 4" WHITE SKIP - DASH LINE (10' LINE - 30' SPACE)
  - ③ POLYUREA 6" WHITE LINE
  - ④ POLYUREA 24" WHITE STOP BAR
  - ⑤ POLYUREA WHITE LETTERS & SYMBOLS
  - ⑥ 4" WHITE PAINT PARKING LINE
  - ⚡ PROPOSED TRAFFIC SIGN (W/TELESCOPING STEEL SIGN SUPPORT)

**BENCH MARK: BIS 189**  
SE BOLT OF LIGHT POLE AT NW CORNER  
OF WESTERN AVENUE AND YORK STREET  
ELEVATION=640.75 NGVD 29 DATUM

FILE NAME = 09285-PLPR-01 - IDOT PLPR06	USER NAME =	DESIGNED -- HLG	REVISED --	<b>STATE OF ILLINOIS DEPARTMENT OF TRANSPORTATION</b>	<b>INTERSECTION ENHANCEMENTS PAVEMENT MARKING AND SIGNAGE</b>			F.A.P. RTE.	SECTION	COUNTY	TOTAL SHEETS	SHEET NO.	
		CHECKED -- HLG	REVISED --		0370	09-00183-00-SP	COOK	16	10				
	PLOT SCALE =	DRAWN -- PS	REVISED --		SCALE: 1" = 20'			SHEET NO. 10 OF 16 SHEETS STA. TO STA.			CONTRACT NO. 63313		
	PLOT DATE =	CHECKED -- AG	REVISED --		FED. ROAD DIST. NO. 1 ILLINOIS			FED. AID PROJECT ARA-9003 (338)					

SECTION 36, TOWNSHIP 37, RANGE 13  
SECTION 31, TOWNSHIP 37, RANGE 14



**PAVEMENT MARKING LEGEND**

- ① POLYUREA DOUBLE 4" YELLOW CENTERLINE (11" C/C)
- ② POLYUREA 4" WHITE SKIP - DASH LINE (10' LINE - 30' SPACE)
- ③ POLYUREA 6" WHITE LINE
- ④ POLYUREA 24" WHITE STOP BAR
- ⑤ POLYUREA WHITE LETTERS & SYMBOLS
- ⑥ 4" WHITE PAINT PARKING LINE

**BENCH MARK: BIS 19**  
SQUARE CUT IN SE CORNER OF TRAFFIC SIGNAL BASE AT  
NW CORNER OF VERMONT STREET AND WESTERN AVENUE  
ELEVATION=638.565 NGVD 29 DATUM

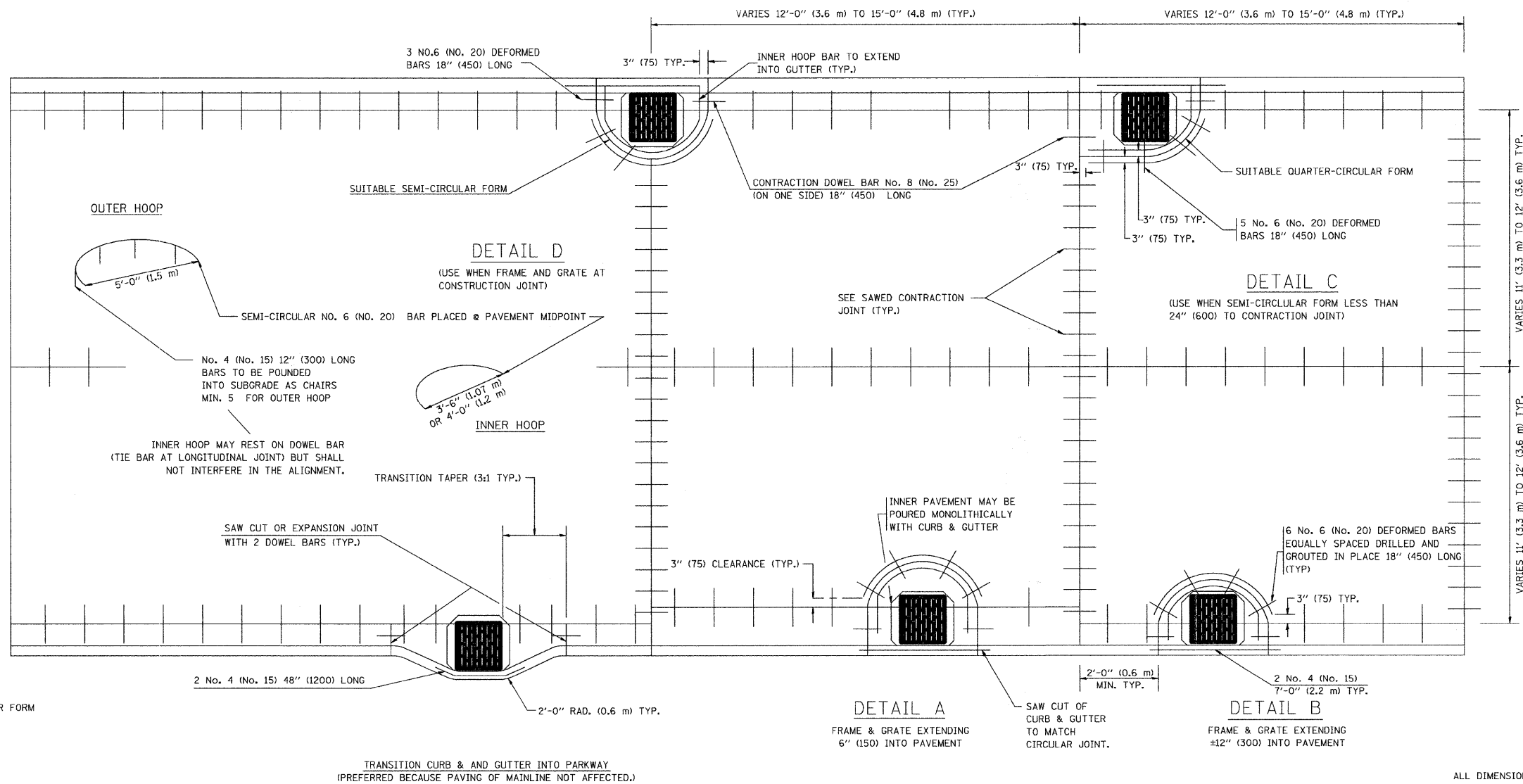
FILE NAME = 09285-PLPR-01 - IDOT PLPR07	USER NAME =	DESIGNED -- HLG	REVISED --	<b>STATE OF ILLINOIS DEPARTMENT OF TRANSPORTATION</b>	<b>INTERSECTION ENHANCEMENTS PAVEMENT MARKING AND SIGNAGE</b>			F.A.P. RTE.	SECTION	COUNTY	TOTAL SHEETS	SHEET NO.
		CHECKED -- HLG	REVISED --		0370	09-00183-00-SP	COOK	16	11			
	PLOT SCALE =	DRAWN -- PS	REVISED --		CONTRACT NO. 63313							
	PLOT DATE =	CHECKED -- AG	REVISED --		FED. ROAD DIST. NO. 1 ILLINOIS FED. AID PROJECT ARA-9003 (338)							
					SCALE: 1" = 20'	SHEET NO. 11	OF 16 SHEETS	STA.	TO STA.			

FRAME EXTENSION INTO PAVEMENT	INNER HOOP REINFORCEMENT DIAMETER	SEMI CIRCULAR FORM DIAMETER	OUTER HOOP REINFORCEMENT DIAMETER
UP TO 8" (200)	3'-6" (1.1 m)	4'-0" (1.2 m)	5'-0" (1.5 m)
> 8" (200) TO 14" (360)	4'-0" (1.2 m)	4'-6" (1.4 m)	5'-0" (1.5 m)

**DESIGNER NOTE:**  
THIS DETAIL IS TO BE USED  
WHEN THE GUTTER FLAG IS  
LESS THAN 24"

**NOTES :**

1. THE ROUNDOUT AND ADDED REINFORCEMENT WILL NOT BE PAID SEPARATELY, BUT SHALL BE INCLUDED IN THE CONTRACT UNIT PRICE FOR THE PAVEMENT.
2. TRANSVERSE JOINTS MAY BE MOVED TO ACCOMMODATE ROUNDOUT, EDGE OF CIRCULAR JOINT SHALL BE MINIMUM 12" (300) FROM TRANSVERSE JOINT. RELOCATED TRANSVERSE JOINT SHALL BE CONTINUOUS FROM EDGE OF PAVEMENT TO EDGE OF PAVEMENT.
3. SEMI-CIRCULAR FORM SHALL BE REMOVED PRIOR TO DRILL AND GROUT OF TIE BARS.
4. ALL REINFORCED BARS SHALL BE EPOXY COATED.
5. DRILL AND GROUT IS PREFERRED, HOWEVER TIE BARS CAN BE POURED IN PLACE IF CLEARANCE IS PROVIDED TO OUTER EDGE OF FRAME. MINIMUM 2" (50) CLEARANCE.
6. WOOD SHIMS SHALL BE USED TO ADJUST ALL FRAMES. AFTER ADJUSTING MORTAR HAS CURED, THE WOOD SHIMS SHALL BE REMOVED AND THE VOIDS UNDER THE FRAMES FILLED WITH NON SHRINK GROUT.
7. HOOP REINFORCEMENT SHALL BE ONE PIECE CONSTRUCTION.
8. CIRCULAR FRAMES AND GRATES MAY BE SUBSTITUTED.
9. CURB DOWELS MUST BE PLACED LEVEL & TRUE TO ALLOW CONTRACTION MOVEMENT.



**LEGEND:**

- CASTING
- SUITABLE SEMI-CIRCULAR FORM

ALL DIMENSIONS ARE IN INCHES  
(MILLIMETERS) UNLESS OTHERWISE NOTED

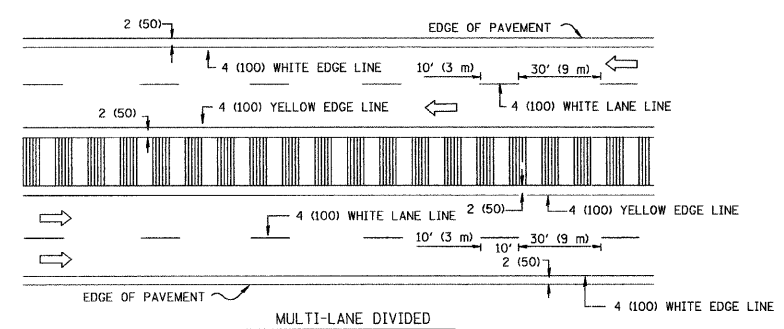
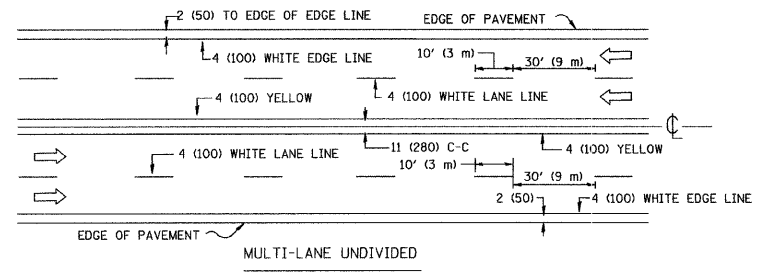
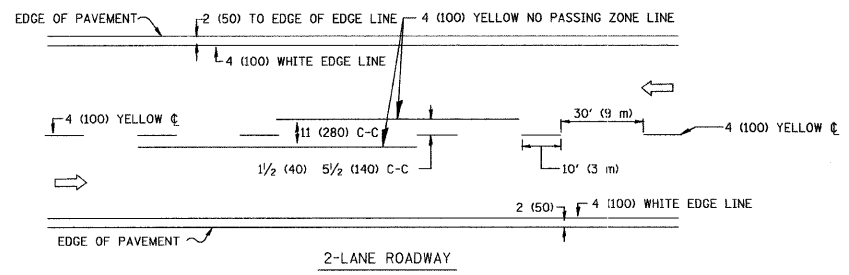
FILE NAME = W:\d\stata\22x34\bd48.dgn	USER NAME = gaglienobt	DESIGNED - A. ABBAS	REVISED - T. MATOUSEK 08-28-00
		DRAWN - TOM MATOUSEK	REVISED - T. MATOUSEK 10-02-00
		CHECKED - A. ABBAS	REVISED - T. MATOUSEK 04-25-02
		DATE - 01-04-99	REVISED - P. LAFLEUR 08-27-02

**STATE OF ILLINOIS  
DEPARTMENT OF TRANSPORTATION**

**DISTRICT ONE  
PCC PAVEMENT ROUNDOUTS AT CURB AND GUTTER  
DETAILS**

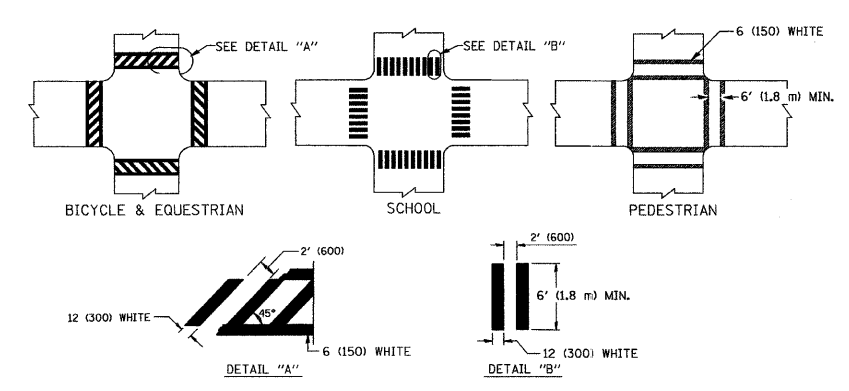
SCALE: NONE SHEET NO. 12 OF 16 SHEETS STA. TO STA.

F.A.P. RTE. 0370	SECTION 09-00183-00-SP	COUNTY COOK	TOTAL SHEETS 16	SHEET NO. 12
8D-48		CONTRACT NO. 63313		
FED. ROAD DIST. NO. 1 ILLINOIS FED. AID PROJECT ARA-9003 (338)				

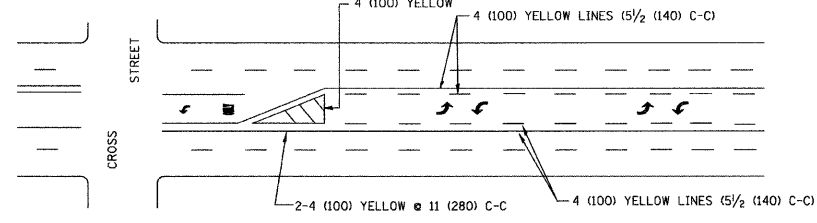
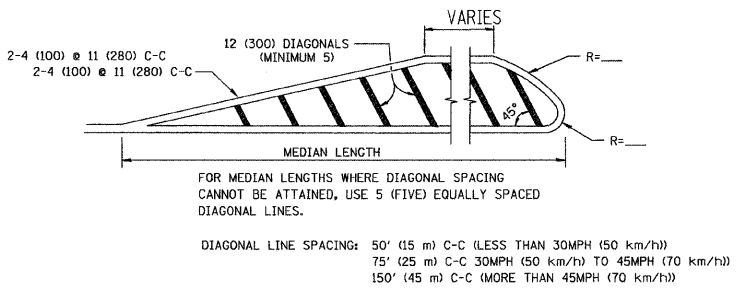
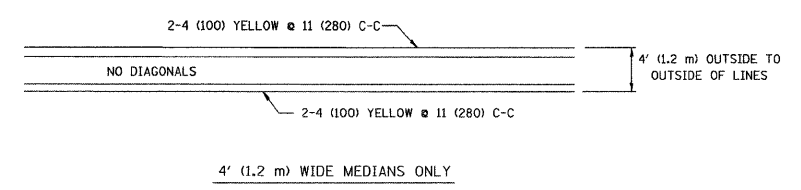


NOTE: MEDIANS WITH BARRIER CURB DO NOT REQUIRE AN EDGE LINE

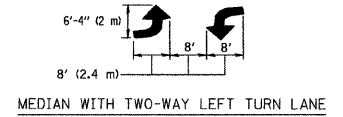
TYPICAL LANE AND EDGE LINE MARKING



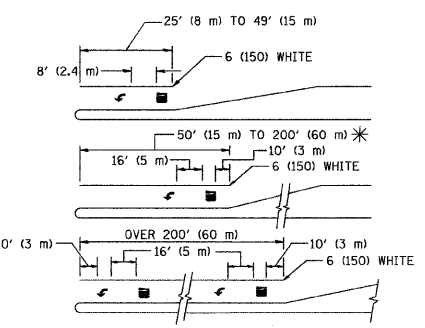
TYPICAL CROSSWALK MARKING



A MINIMUM OF TWO PAIRS OF TURN ARROWS SHALL BE USED, WHITE IN COLOR. ADDITIONAL PAIRS SHALL BE PLACED AT 200' (60 m) TO 300' (90 m) INTERVALS.



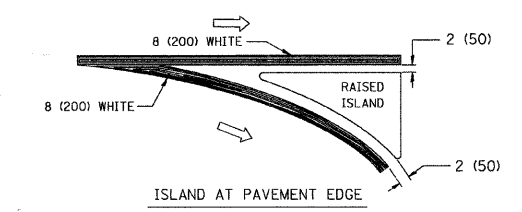
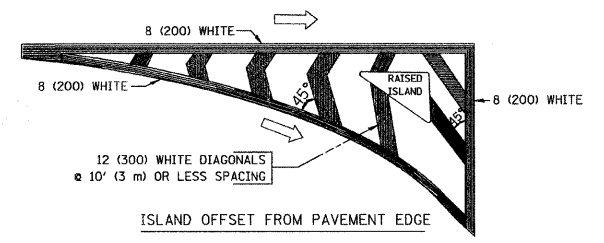
TYPICAL PAINTED MEDIAN MARKING



FULL SIZE LETTERS 8' (2.4 m) AND ARROWS SHALL BE USED.  
 \* AREA = 15.6 SQ. FT. (1.5 m<sup>2</sup>) ; \*\* AREA = 20.8 SQ. FT. (1.9 m<sup>2</sup>)  
 \* TURN LANES IN EXCESS OF 400' (120 m) IN LENGTH MAY HAVE AN ADDITIONAL SET OF ARROW - "ONLY" INSTALLED MIDWAY BETWEEN THE OTHER TWO SETS OF ARROW - "ONLY".

TYPICAL LEFT (OR RIGHT) TURN LANE

TYPICAL TURN LANE MARKING



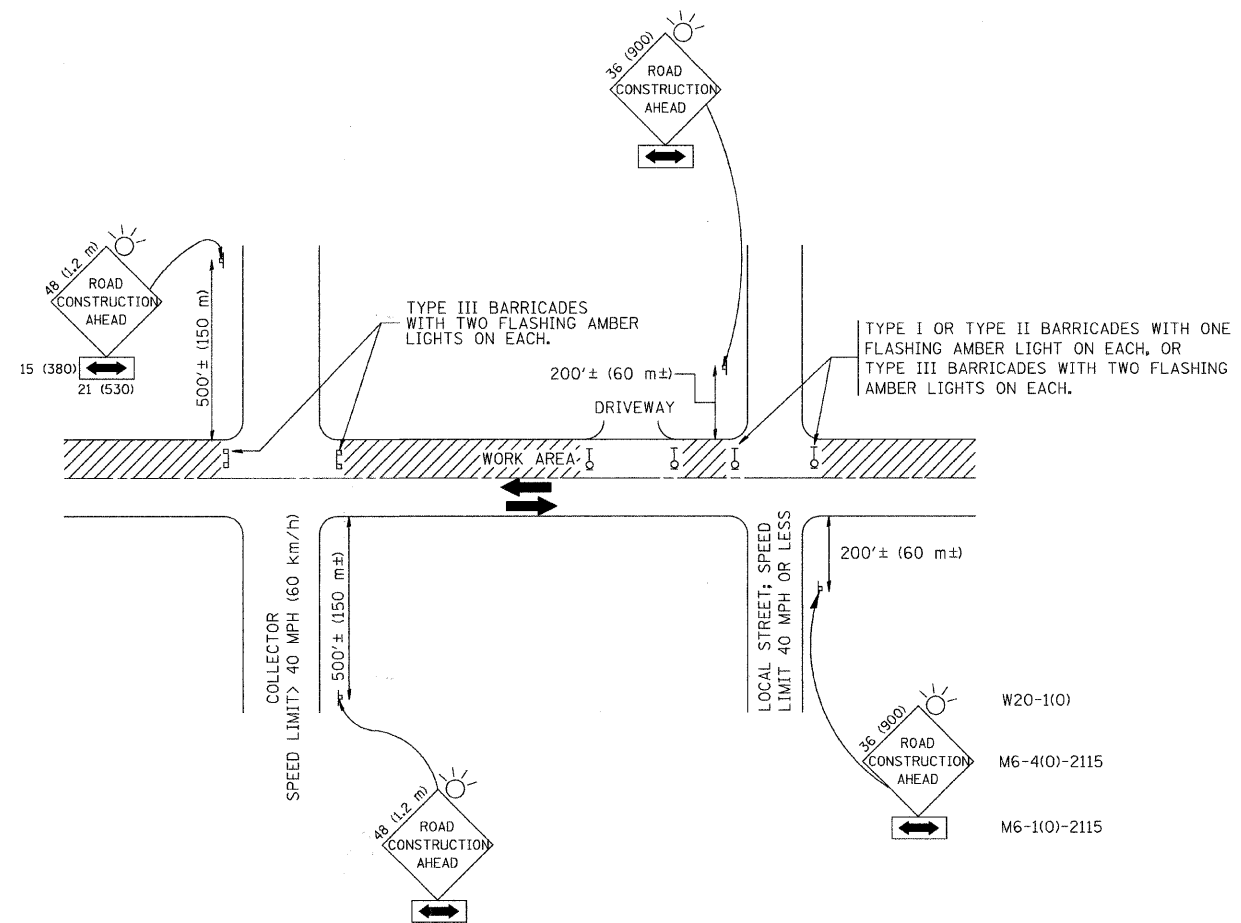
TYPICAL ISLAND MARKING

TYPE OF MARKING	WIDTH OF LINE	PATTERN	COLOR	SPACING / REMARKS
CENTERLINE ON 2 LANE PAVEMENT	4 (100)	SKIP-DASH	YELLOW	10' (3 m) LINE WITH 30' (9 m) SPACE
CENTERLINE ON MULTI-LANE UNDIVIDED PAVEMENT	2 @ 4 (100)	SOLID	YELLOW	11 (280) C-C
NO PASSING ZONE LINES: FOR ONE DIRECTION FOR BOTH DIRECTIONS	4 (100) 2 @ 4 (100)	SOLID SOLID	YELLOW YELLOW	5/2 (140) C-C FROM SKIP-DASH CENTERLINE 11 (280) C-C OMIT SKIP-DASH CENTERLINE BETWEEN
LANE LINES	4 (100) 5 (125) ON FREEWAYS	SKIP-DASH SKIP-DASH	WHITE WHITE	10' (3 m) LINE WITH 30' (9 m) SPACE
DOTTED LINES (EXTENSIONS OF CENTER, LANE OR TURN LANE MARKINGS)	SAME AS LINE BEING EXTENDED	SKIP-DASH	SAME AS LINE BEING EXTENDED	2' (600) LINE WITH 6' (1.8 m) SPACE
EDGE LINES	4 (100)	SOLID	YELLOW-LEFT WHITE-RIGHT	OUTLINE MOUNTABLE MEDIANS IN YELLOW; EDGE LINES ARE NOT USED NEXT TO BARRIER CURB
TURN LANE MARKINGS	6 (150) LINE; FULL SIZE LETTERS & SYMBOLS (8' (2.4m))	SOLID	WHITE	SEE TYPICAL TURN LANE MARKING DETAIL
TWO WAY LEFT TURN MARKING	2 @ 4 (100) EACH DIRECTION 8' (2.4m) LEFT ARROW	SKIP-DASH AND SOLID IN PAIRS	YELLOW WHITE	10' (3 m) LINE WITH 30' (9 m) SPACE FOR SKIP-DASH; 5/2 (140) C-C BETWEEN SOLID LINE AND SKIP-DASH LINE SEE TYPICAL TWO-WAY LEFT TURN MARKING DETAIL
CROSSWALK LINES (PEDESTRIAN) A. DIAGONALS (BIKE & EQUESTRIAN) B. LONGITUDINAL BARS (SCHOOL)	2 @ 6 (150) 12 (300) @ 45° 12 (300) @ 90°	SOLID SOLID	WHITE WHITE	NOT LESS THAN 6' (1.8 m) APART 2' (600) APART SEE TYPICAL CROSSWALK MARKING DETAILS.
STOP LINES	24 (600)	SOLID	WHITE	PLACE 4' (1.2 m) IN ADVANCE OF AND PARALLEL TO CROSSWALK, IF PRESENT. OTHERWISE, PLACE AT DESIRED STOPPING POINT. PARALLEL TO CROSSROAD CENTERLINE, WHERE POSSIBLE
PAINTED MEDIANS	2 @ 4 (100) WITH 12 (300) DIAGONALS @ 45° NO DIAGONALS USED FOR 4' (1.2 m) WIDE MEDIANS	SOLID	YELLOW: TWO WAY TRAFFIC WHITE: ONE WAY TRAFFIC	11 (280) C-C FOR THE DOUBLE LINE SEE TYPICAL PAINTED MEDIAN MARKING.
GORE MARKING AND CHANNELIZING LINES	8 (200) WITH 12 (300) DIAGONALS @ 45°	SOLID	WHITE	DIAGONALS: 15' (4.5 m) C-C (LESS THAN 30MPH (50 km/h)) 20' (6 m) C-C (30MPH (50 km/h) TO 45MPH (70 km/h)) 30' (9 m) C-C (OVER 45MPH (70 km/h))
RAILROAD CROSSING	24 (600) TRANSVERSE LINES; "RR" IS 6' (1.8 m) LETTERS; 16 (400) LINE FOR "X"	SOLID	WHITE	SEE STATE STANDARD 780001 AREA OF: "R"=3.6 SQ. FT. (0.33 m <sup>2</sup> ) EACH "X"=54.0 SQ. FT. (5.0 m <sup>2</sup> )
SHOULDER DIAGONALS	12 (300) @ 45°	SOLID	WHITE - RIGHT YELLOW - LEFT	50' (15 m) C-C (LESS THAN 30MPH (50 km/h)) 75' (25 m) C-C (30 MPH (50 km/h) TO 45MPH (70 km/h)) 150' (45 m) C-C (OVER 45MPH (70 km/h))

FOR FURTHER DETAILS ON PAVEMENT MARKING REFER TO STANDARD SPECIFICATIONS FOR ROAD AND BRIDGE CONSTRUCTION AND STATE STANDARD 780001.

All dimensions are in inches (millimeters) unless otherwise shown.

FILE NAME = c:\pwork\pwork\drivakosgn\d0108315\to3.dgn	USER NAME = drivakosgn	DESIGNED - EVERS	REVISED -T, RAMMACHER 10-27-94	STATE OF ILLINOIS DEPARTMENT OF TRANSPORTATION	DISTRICT ONE TYPICAL PAVEMENT MARKINGS DETAILS	F.A.P. RTE. 0370	SECTION 09-00183-00-SP	COUNTY COOK	TOTAL SHEETS 16	SHEET NO. 13	
PLOT SCALE = 50.000' / IN.	CHECKED -	REVISOR -C, JUCIUS 09-09-09	REVISOR -			TC-13		CONTRACT NO. 63313			
PLOT DATE = 9/9/2009	DATE - 03-19-90	REVISOR -	SCALE: NONE			SHEET NO. 13	OF 16 SHEETS	STA. TO STA.	FED. ROAD DIST. NO. 1	ILLINOIS	FED. AID PROJECT ARA-9003 (338)
90285-DTLS-01 - IDOT P02											



TRAFFIC CONTROL AND PROTECTION FOR SIDE ROADS, INTERSECTIONS, AND DRIVEWAYS

NOTES:

- A. FOR NO LANE RESTRICTION ON THE SIDE ROAD OR DRIVEWAYS
  1. SIDE ROAD WITH A SPEED LIMIT OF 40 MPH (60 km/h) OR LESS AS SHOWN ON THE DRAWING AND AS DIRECTED BY THE ENGINEER:
    - a) ONE **ROAD CONSTRUCTION AHEAD** SIGN 36 x 36 (900x900) WITH A FLASHER AND FLAG MOUNTED ON IT APPROXIMATELY 200' (60 m) IN ADVANCE OF THE MAIN ROUTE.
    - b) THE CLOSED PORTION OF THE MAIN ROUTE SHALL BE PROTECTED BY BLOCKING WITH TYPE I, TYPE II OR TYPE III BARRICADES, 1/3 OF THE CROSS SECTION OF THE CLOSED PORTION.
  2. SIDE ROAD WITH A SPEED LIMIT GREATER THAN 40 MPH (60 km/h) AS SHOWN ON THE DRAWING AND AS DIRECTED BY THE ENGINEER:
    - a) ONE **ROAD CONSTRUCTION AHEAD** SIGN 48 x 48 (1.2 m x 1.2 m) WITH A FLASHER MOUNTED ON IT APPROXIMATELY 500' (150 m) IN ADVANCE OF THE MAIN ROUTE.
    - b) THE CLOSED PORTION OF THE MAIN ROUTE SHALL BE PROTECTED BY BLOCKING WITH TYPE III BARRICADES, 1/2 OF THE CROSS SECTION OF THE CLOSED PORTION.
  3. WHEN THE SIDE ROAD LIES BETWEEN THE BEGINNING OF THE MAINLINE SIGNING AND THE WORK ZONE, A SINGLE HEADED ARROW (M6-1) SHALL BE USED IN LIEU OF THE DOUBLE HEADED ARROW (M6-4).
- B. FOR A LANE CLOSURE ON A SIDE ROAD OR DRIVEWAY:
 

USE APPLICABLE PORTIONS OF THE TYPICAL APPLICATION OF TRAFFIC CONTROL DEVICES (STD. 701501, STD. 701606 OR THE APPROPRIATE STANDARD). THE SPACING OF SIGNS AND BARRICADES SHALL BE ADJUSTED FOR FIELD CONDITIONS AS DIRECTED BY THE ENGINEER. THE DIRECTIONAL ARROW SHALL BE COVERED OR REMOVED WHEN NO LONGER CONSISTENT WITH THE SIDE ROAD LANE CLOSURE.
- C. ADVANCE WARNING SIGNS ARE TO BE OMITTED ON DRIVEWAY UNLESS OTHERWISE NOTED.
- D. THE TRAFFIC CONTROL AND PROTECTION FOR SIDE ROADS, INTERSECTIONS, AND DRIVEWAYS SHALL BE INCIDENTAL TO THE COST OF SPECIFIED TRAFFIC CONTROL STANDARDS OR ITEMS.

All dimensions are in millimeters (inches) unless otherwise shown.




FILE NAME = W:\dststd\22x34\tol18.dgn	USER NAME = goglianobx	DESIGNED - LHA	REVISED - J. OBERLE 10-18-95
		DRAWN -	REVISED - A. HOUSEH 03-06-96
	PLOT SCALE = 50,000 / IN.	CHECKED -	REVISED - A. HOUSEH 10-15-96
	PLOT DATE = 1/4/2009	DATE - 06-89	REVISED - T. RAMMACHER 01-06-00

STATE OF ILLINOIS  
DEPARTMENT OF TRANSPORTATION



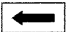
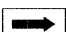

TRAFFIC CONTROL AND PROTECTION FOR SIDE ROADS, INTERSECTIONS, AND DRIVEWAYS DETAILS			
SCALE: NONE	SHEET NO. 14 OF 16 SHEETS	STA.	TO STA.

F.A.P. RTE.	SECTION	COUNTY	TOTAL SHEETS	SHEET NO.
0370	09-00183-00-SP	COOK	16	14
TC-10			CONTRACT NO. 63313	
FED. ROAD DIST. NO. 1 ILLINOIS FED. AID PROJECT ARA-9003 (338)				

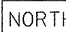
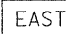
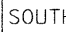


**ROUTE MARKERS**

-  FOR U.S. ROUTES  
M1-40-2424
-  FOR ILLINOIS ROUTES  
M1-50-2424
-  R.R. UNMARKED ROUTES  
SPECIAL 24" x 18" VARIABLE  
4" BLACK LETTERS ON WHITE  
REFLECTIVE BACKGROUND

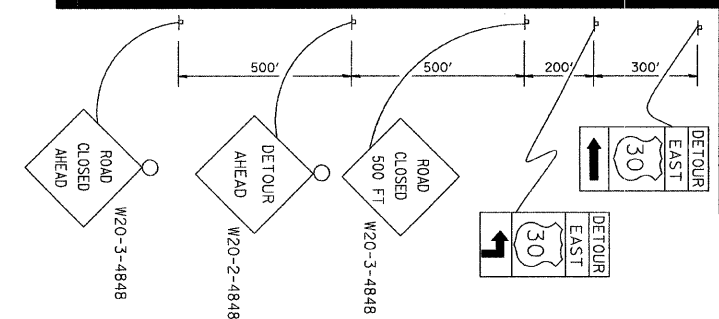
**ARROWS SIGNS**

-  M5-1L-2115
-  M5-1R-2115
-  M6-1-2115
-  M6-1-2115
-  M6-3-2115

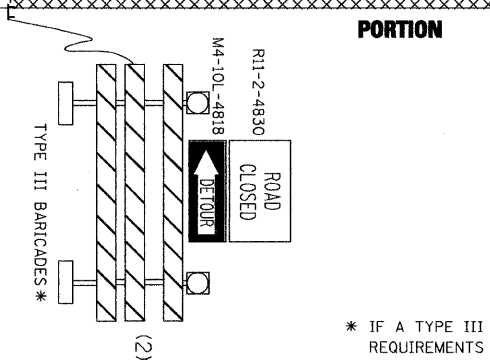
**CARDINAL DIRECTION & DETOUR SIGNS**

-  NORTH M3-1-2412
-  EAST M3-2-2412
-  SOUTH M3-3-2412
-  WEST M3-4-2412
-  DETOUR M4-8-2412

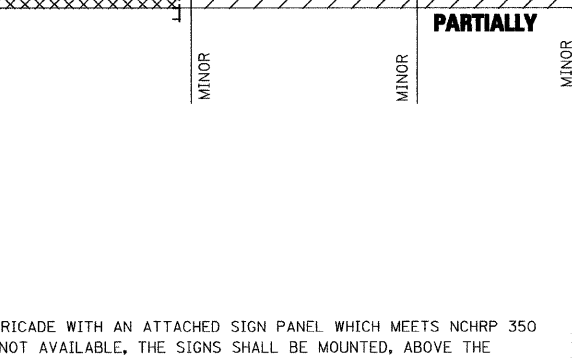
**STATE ROUTE**



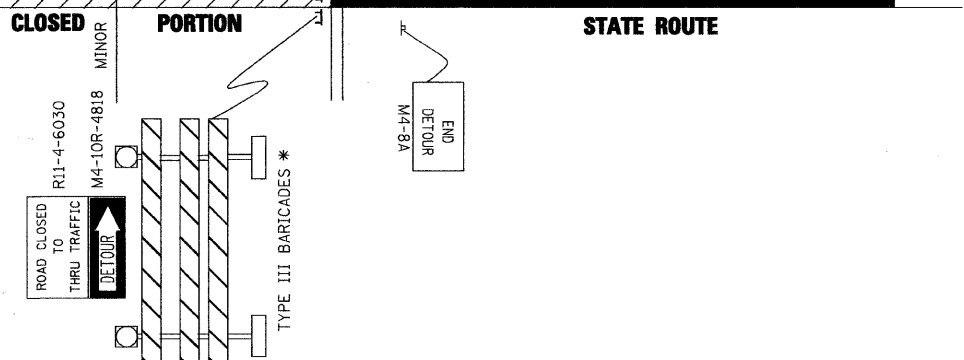
**COMPLETELY CLOSED PORTION**



**PARTIALLY CLOSED PORTION**



**STATE ROUTE**



\* IF A TYPE III BARRICADE WITH AN ATTACHED SIGN PANEL WHICH MEETS NCHRP 350 REQUIREMENTS IS NOT AVAILABLE, THE SIGNS SHALL BE MOUNTED, ABOVE THE BARRICADES, ON SEPARATE SIGNS SUPPORTS THAT MEET NCHRP 350 REQUIREMENTS.

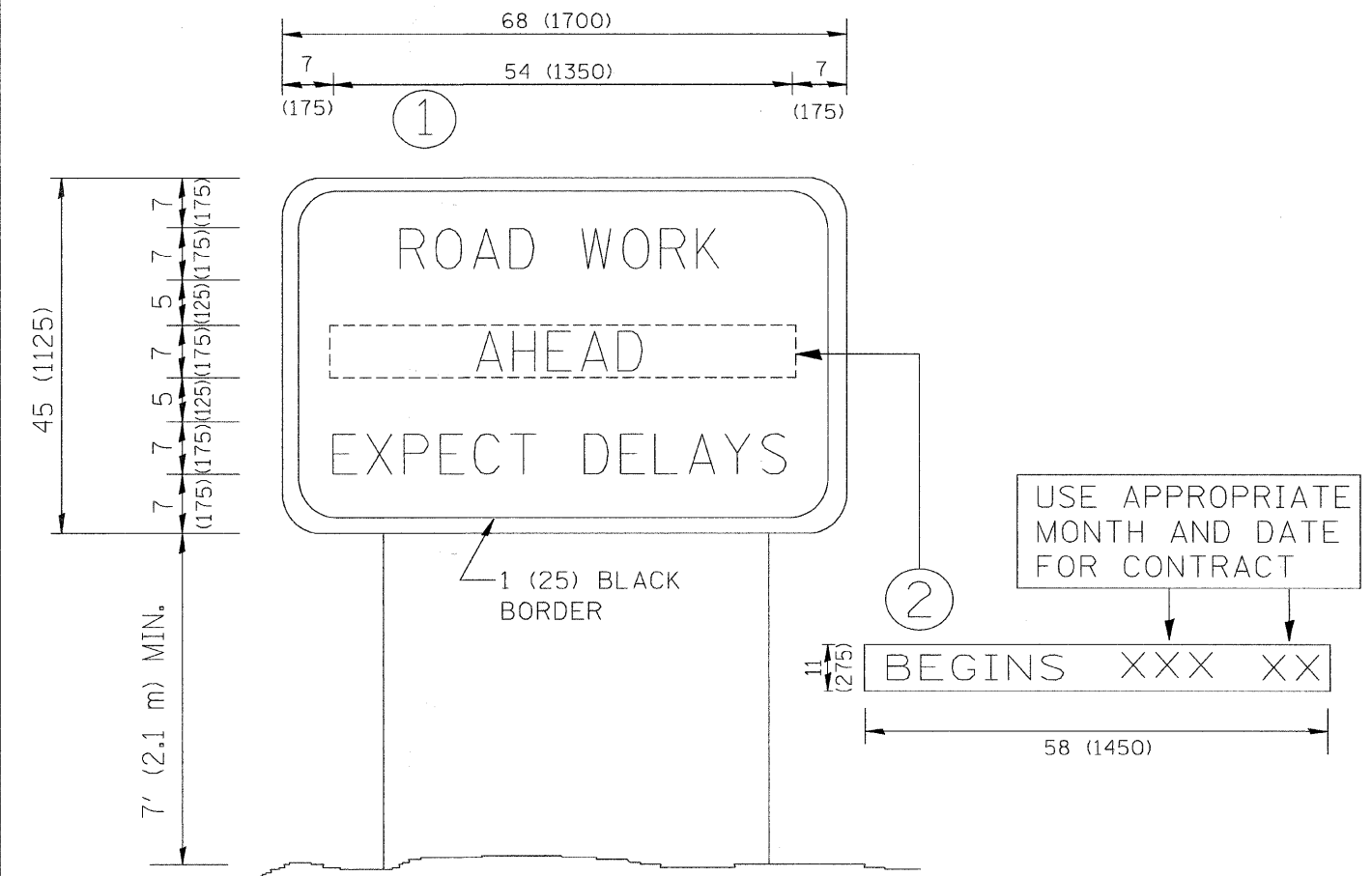
FILE NAME =	USER NAME = drivakosgn	DESIGNED -	REVISED - 10-18-02
\\pwwork\pwwid\DRIVAKOSGN\d0188315\21.dgn		DRAWN -	REVISED - R. BORO 09-14-09
	PLOT SCALE = 49.9999' / IN.	CHECKED -	REVISED -
	PLOT DATE = 9/14/2009	DATE -	REVISED -

**STATE OF ILLINOIS  
DEPARTMENT OF TRANSPORTATION**

DISTRICT ONE  
TYPICAL MARKINGS FOR CLOSING STATE HIGHWAYS  
DETAILS

SCALE: NONE    SHEET NO. 15 OF 16 SHEETS    STA.    TO STA.

F.A.P. RTE.	SECTION	COUNTY	TOTAL SHEETS	SHEET NO.
0370	09-00183-00-SP	COOK	16	15
<b>TC-21</b>			CONTRACT NO. 63313	
FED. ROAD DIST. NO. 1 ILLINOIS FED. AID PROJECT ARA-9003 (338)				



**NOTES:**

1. USE BLACK LETTERING ON ORANGE BACKGROUND.
2. ERECT SIGNS IN ADVANCE OF THE LOCATION FOR THE "ROAD CONSTRUCTION AHEAD" SIGN AT LOCATIONS AS DIRECTED BY THE ENGINEER.
3. ERECT SIGN ① WITH INSTALLED PANEL ② ONE WEEK PRIOR TO THE START OF CONSTRUCTION.
4. REMOVE PANEL ② SOON AFTER THE START OF CONSTRUCTION.
5. SEE SPECIAL PROVISION FOR "TEMPORARY INFORMATION SIGNING" FOR ADDITIONAL INFORMATION.
6. ONE SIGN ASSEMBLY EQUALS 25.70 SQ. FT. (2.3 SQ. M.)
7. SHALL BE PAID FOR AS TEMPORARY INFORMATION SIGNING.

ALL DIMENSIONS ARE IN INCHES (MILLIMETERS) UNLESS OTHERWISE SHOWN.

FILE NAME = W:\data\22x34\to22.dgn	USER NAME = gegljanobt	DESIGNED -	REVISED - R. MIRS 09-15-97	<b>STATE OF ILLINOIS DEPARTMENT OF TRANSPORTATION</b>	<b>DISTRICT ONE ARTERIAL ROAD INFORMATION SIGN DETAILS</b>			F.A.P. RTE. 0370	SECTION 09-00183-00-SP	COUNTY COOK	TOTAL SHEETS 16	SHEET NO. 16
	PLOT SCALE = 50,000 / IN.	DRAWN -	REVISED - R. MIRS 12-11-97		SCALE: NONE	SHEET NO. 16 OF 16 SHEETS	STA.	TO STA.	CONTRACT NO. 63313			
	PLOT DATE = 1/4/2008	CHECKED -	REVISED - T. RAMMACHER 02-02-99		FED. ROAD DIST. NO. 1 ILLINOIS FED. AID PROJECT ARA-9003 (338)							
		DATE -	REVISED - C. JUCIUS 01-31-07		09285-DTLS-01 - IDOT P05							