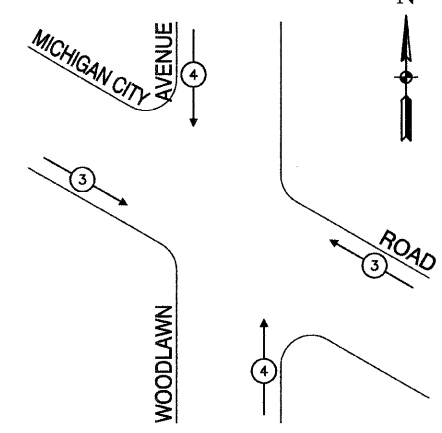
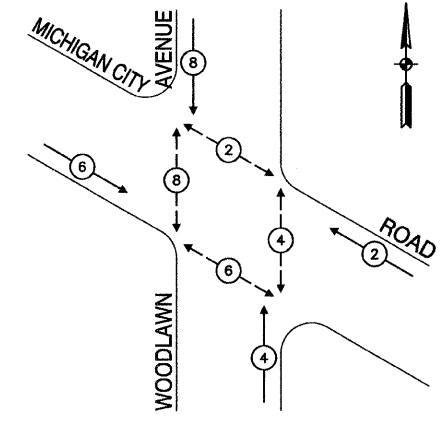


**EMERGENCY VEHICLE \*  
PREEMPTION SEQUENCE**



PROPOSED EMERGENCY VEHICLE PREEMPTORS	
EMERGENCY VEHICLE PREEMPTORS	3 4
MOVEMENT	↖ ↗

**CONTROLLER SEQUENCE**



**LEGEND**

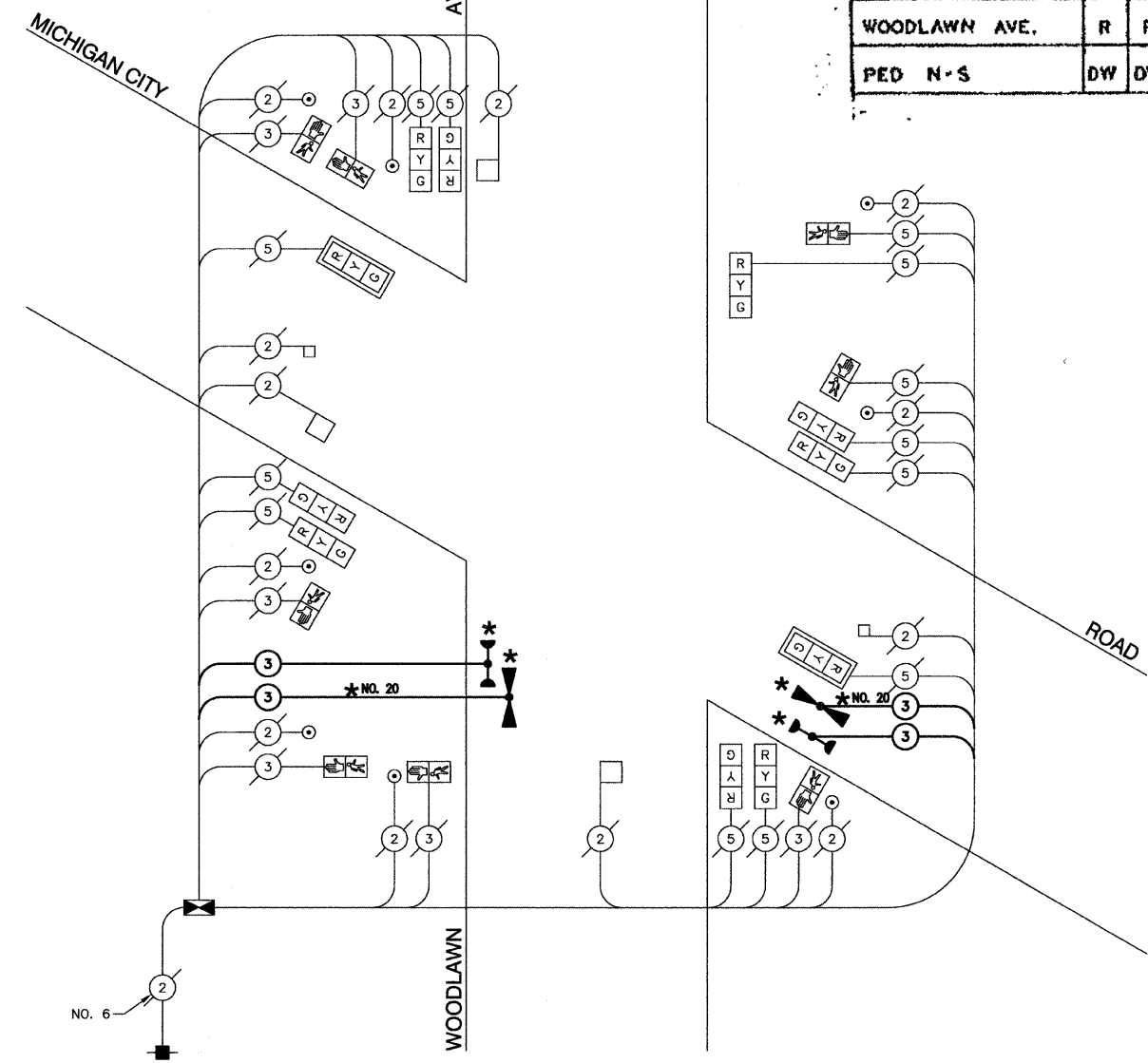
- ⊕ DUAL ENTRY PHASE
- ⊙ SINGLE ENTRY PHASE
- OL OVERLAP
- ⊖ PEDESTRIAN PHASE
- NUMBER REFERS TO ASSOCIATED PHASE

**EXISTING SEQUENCE**

PHASE	A		B			FLASH
	1	2	3	4	5	
MICHIGAN CITY RD.	G	Y	R	R	R	R
WOODLAWN AVE.	R	R	G	G	Y	R
PED N-S	DW	DW	W	DW	DW	

**CABLE PLAN LEGEND**

EXISTING	PROPOSED	
⊕	⊕	8" TRAFFIC SIGNAL SECTION
⊙	⊙	12" TRAFFIC SIGNAL SECTION
⊖	⊖	12" PEDESTRIAN SIGNAL SECTION
⊖	⊖	12" PEDESTRIAN SIGNAL SECTION
⊖	⊖	CONTROLLER CABINET
⊖	⊖	UNINTERRUPTIBLE POWER SUPPLY
⊖	⊖	SERVICE INSTALLATION
⊖	⊖	TELEPHONE CONNECTION
⊖	⊖	MAGNETIC DETECTOR
⊖	⊖	EMERGENCY VEHICLE LIGHT DETECTOR
⊖	⊖	CONFIRMATION BEACON
⊖	⊖	PUSHBUTTON DETECTOR
⊖	⊖	MAGNETIC DETECTOR
⊖	⊖	VEHICLE DETECTOR, INDUCTION LOOP
⊖	⊖	DENOTES NUMBER OF CONDUCTORS. ALL CABLE NO. 14 EXCEPT AS INDICATED. ALL LOOP DETECTOR CABLE TO BE SHIELDED.
⊖	⊖	SIGNAL FACE WITH BACKPLATE
⊖	⊖	"P" INDICATES PROGRAMMED HEAD
⊖	⊖	GROUND CABLE IN CONDUIT NO. 6 SOLID COPPER (GREEN)
⊖	⊖	FIBER OPTIC CABLE IN CONDUIT NO. 62.5/125 2-MM12F & SM12F



**CABLE PLAN**  
NOT TO SCALE

**\* SCHEDULE OF QUANTITIES**

ITEM	UNIT	QUAN
CONDUIT PUSHED, 2" DIA., GALVANIZED STEEL	FOOT	150
MAINTENANCE OF EXISTING TRAFFIC SIGNAL INSTALLATION	EACH	1
FULL-ACTUATED CONTROLLER AND TYPE IV CABINET	EACH	1
ELECTRIC CABLE IN CONDUIT, SIGNAL NO. 14 3C	FOOT	159
ELECTRIC CABLE IN CONDUIT, SIGNAL NO. 14 5C	FOOT	548
TRAFFIC SIGNAL POST, GALVANIZED STEEL 18 FT.	EACH	1
DRILL EXISTING HANDHOLE	EACH	4
INDUCTIVE LOOP DETECTOR	EACH	3
LIGHT DETECTOR	EACH	2
LIGHT DETECTOR AMPLIFIER	EACH	1
RELOCATE EXISTING SIGNAL HEAD	EACH	1
RELOCATE EXISTING PEDESTRIAN SIGNAL HEAD	EACH	1
RELOCATE EXISTING PEDESTRIAN PUSH-BUTTON	EACH	1
REMOVE EXISTING TRAFFIC SIGNAL EQUIPMENT	EACH	2
ELECTRIC CABLE IN CONDUIT NO. 20 3/C, TWISTED, SHIELDED	FOOT	159
MODIFY EXISTING TYPE "D" FOUNDATION	EACH	1
MAGNETIC DETECTOR AMPLIFIER	EACH	2

**\* THIS PLAN IS FOR THE PURPOSE OF INSTALLING EMERGENCY VEHICLE PREEMPTION EQUIPMENT AS SHOWN PER PLAN INDICATED IN THE SCHEDULE OF QUANTITIES. ALL OTHER EQUIPMENT SHOWN SHALL BE DISREGARDED.**

**\* ADDED EV PREEMPTION LOCATION NO. 8**

FILE NAME = 0924-PLAN-12 - IDOT P02	USER NAME =	DESIGNED - MRS	REVISED - 10-13-09 *	<b>STATE OF ILLINOIS DEPARTMENT OF TRANSPORTATION</b>	<b>PROPOSED EMERGENCY VEHICLE PREEMPTION MICHIGAN CITY ROAD &amp; WOODLAWN AVENUE SCHEDULE OF QUANTITIES, CABLE PLAN, &amp; PHASE DESIGNATION DIAGRAM</b>		F.A.U. RTE.	SECTION	COUNTY	TOTAL SHEETS	SHEET NO.	
	PLOT SCALE =	CHECKED - PKB	REVISED -		SCALE: 1"=20'	SHEET NO. 26	OF 43 SHEETS	3593	09-00114-00-TL	COOK	43	26
	PLOT DATE = 10-13-09	DRAWN - PS	REVISED -									
		CHECKED - AG	REVISED -					FED. ROAD DIST. NO. 1	ILLINOIS	FED. AID PROJECT	ARA-9003(336)	