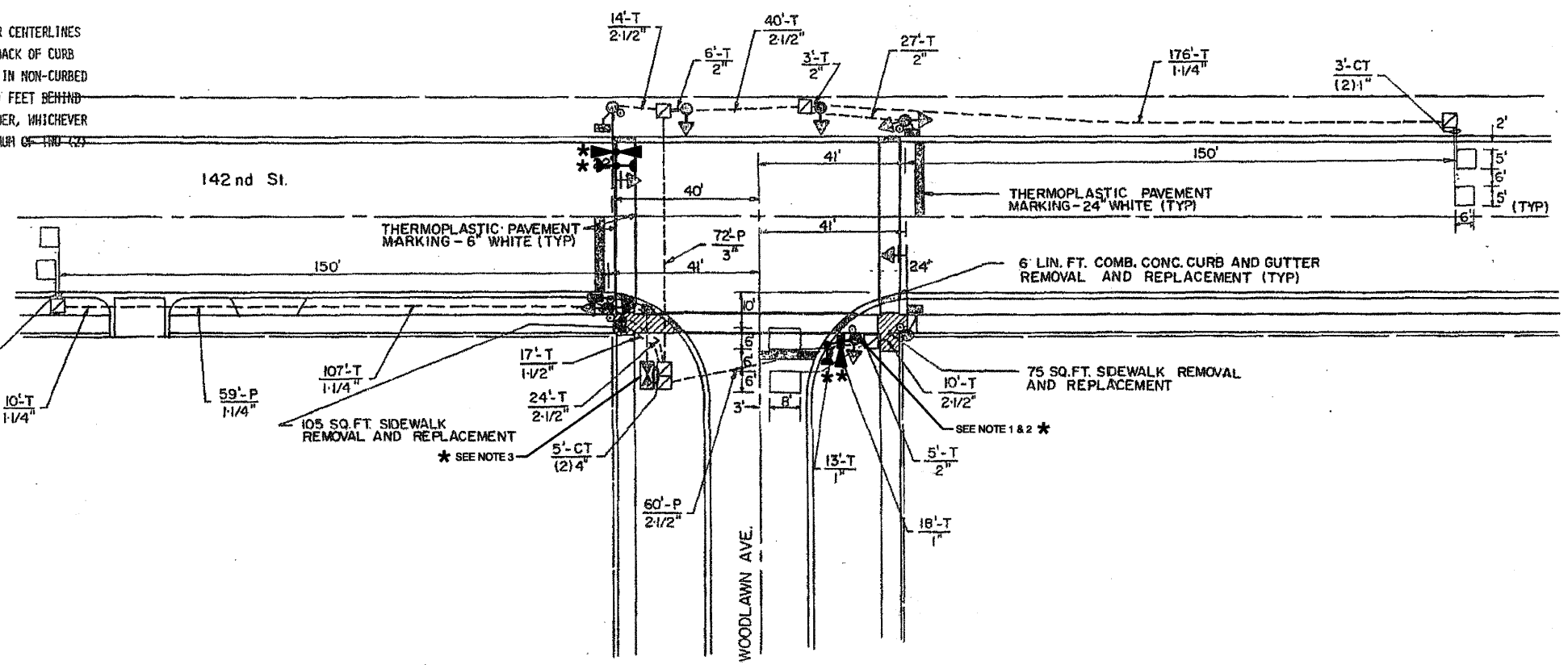
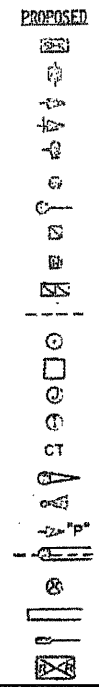




- BE INSTALLED IN STRICT CONFORMITY WITH THE LOOP DETECTOR AMPLIFIER MANUFACTURERS RECOMMENDATIONS. THE DETECTOR LOOP SHALL BE MEASURED FOR THAT PORTION OF SAW CUT BEYOND THE SPLICE AS SPECIFIED IN SECTION T 418.04 OF THE SPECIFICATIONS FOR TRAFFIC CONTROL ITEMS.
2. LEAD-IN WIRING SHALL BE INSTALLED IN STRICT CONFORMITY WITH THE MANUFACTURERS RECOMMENDATIONS. THE 2/C SHIELDED CABLE TO BE USED FOR THE DETECTOR LOOP LEAD-IN SHALL BE MEASURED FROM THE SPLICE TO THE CONTROLLER AS SPECIFIED IN SECTION T 421.04 OF THE STANDARD SPECIFICATIONS FOR TRAFFIC CONTROL ITEMS. FLAT CABLE WILL NOT BE PERMITTED.
3. ALL SIGNAL AND DETECTOR ELECTRIC CABLE THAT IS FURNISHED BY THE CONTRACTOR SHALL BE PROTECTED BY POLETHYLENE INSULATION WITH A POLYVINYLCHLORIDE JACKET. SERVICE CABLE MAY HAVE AN XLP JACKET.
4. THE REMOVAL AND REPLACEMENT OF SIDEWALK, DRIVEWAY, MEDIAN AND ISLAND SURFACE PAVING AT HANDHOLES, JACKING PITS, INSPECTION OPENINGS AND CONCRETE JUNCTION BOXES SHALL BE SAW CUT AROUND THE AREA TO BE REMOVED. THE REMOVAL AND REPLACEMENT OF SIDEWALK, DRIVEWAY, MEDIAN AND ISLAND SURFACE PAVING WILL BE PAID FOR SEPARATELY.
5. THE EXACT LOCATION OF ALL UTILITIES SHALL BE FIELD VERIFIED BY THE CONTRACTOR BEFORE THE INSTALLATION OF ANY COMPONENTS OF THE TRAFFIC SIGNAL SYSTEM. FOR LOCATION OF UTILITIES CALL J.U.L.I.E. TOLL FREE NUMBER 800-892-0123 AND STATE MAINTAINED TRAFFIC SIGNAL 312-378-2800.
6. ALL SIGNAL POST AND MAST ARM POLES SHALL BE LOCATED WITH THEIR CENTERLINES A MINIMUM OF FOUR (4) AND SIX (6) FEET RESPECTIVELY FROM THE BACK OF CURB UNLESS NOTED OR DIMENSIONED TO THE CONTRARY ON THE DRAWINGS. IN NON-CURBED AREAS THE MAST ARM POLE SHALL BE LOCATED A MINIMUM OF TEN (10) FEET BEHIND THE EDGE OF PAVEMENT OR TWO (2) FEET BEHIND THE EDGE OF SHOULDER, WHICHEVER DISTANCE IS GREATER. SIGNAL POSTS SHOULD BE PLACED AT A MINIMUM OF TWO (2) FEET BEHIND THE EDGE OF THE SHOULDER.
7. FOR THE LOCATION OF ALL LOOPS AT THIS INTERSECTION, CONTACT THE I.D.O.T. AREA TRAFFIC SIGNAL ENGINEER AT 800-4139 WHO WILL MARK THE PAVEMENT FOR THE CUTTING OF THE LOOPS.

TRAFFIC SIGNAL LEGEND

- PROPOSED**
- CONTROLLER
 - SERVICE INSTALLATION
 - SIGNAL HEAD
 - SIGNAL HEAD WITH BACKPLATE
 - SIGNAL HEAD, PEDESTRIAN
 - SIGNAL POST
 - MAST ARM ASSEMBLY AND POLE, STEEL
 - HANDHOLE
 - HEAVY DUTY HANDHOLE
 - DOUBLE HANDHOLE
 - G.S. CONDUIT IN TRENCH OR PUSHED
 - PEDESTRIAN PUSHBUTTON DETECTOR
 - DETECTOR LOOP
 - CONCRETE JUNCTION BOX
 - CAST IRON JUNCTION BOX
 - COMMON TRENCH
 - MAST ARM ASSEMBLY AND POLE, ALUMINUM
 - EMERGENCY VEHICLE SYSTEM DETECTOR
 - SIGNAL HEAD OPTICALLY PROGRAMMED
 - CONDUIT SPLICE
 - WOOD POLE
 - RACEWAY FOR MAGNETIC DETECTOR, TYPE I OR TYPE II
 - VEHICLE DETECTOR, NON COMPENSATED MAGNETIC TYPE
 - RAILROAD CONTROL CABINET



*** NOTES:**

1. EXISTING SIGNAL POST SHALL BE REPLACED WITH NEW 18-FOOT SIGNAL POST ON EXISTING FOUNDATION. RELOCATION OF ANY EXISTING SIGNAL HEADS, PEDESTRIAN SIGNAL HEADS OR PEDESTRIAN PUSHBUTTONS SHALL BE PAID FOR SEPARATELY. RELOCATION OF ANY SIGNS BRACKETED TO THE POST SHALL BE INCIDENTAL. THE LIGHT DETECTOR SHALL BE BRACKET MOUNTED TO THE TOP OF THE NEW POST. THE SALVAGE VALUE OF THE EXISTING POST SHALL BE INCLUDED IN THE PRICE OF THE PAY ITEM. TRAFFIC SIGNAL POST, GALVANIZED STEEL, 18 FT
2. THE FOLLOWING ITEMS SHALL BE REMOVED BY THE CONTRACTOR AND DISPOSED OF BY THEM OUTSIDE THE RIGHT-OF-WAY AT THEIR EXPENSE. THE SALVAGE VALUE OF THE REMOVED EQUIPMENT SHALL BE REFLECTED IN THE CONTRACTOR BID PRICE.
TRAFFIC SIGNAL POST, 18FT
3. THE FOLLOWING TRAFFIC SIGNAL EQUIPMENT SHALL BE REMOVED BY THE CONTRACTOR, SHALL REMAIN THE PROPERTY OF IDOT, AND SHALL BE STORED AS STATED IN THE SPECIAL PROVISION FOR PICK UP BY THE IDOT FORCES AS DESIGNATED BY ENGINEER.
CONTROLLER EACH
CONTROLLER CABINET EACH 1

*** THIS PLAN IS FOR THE PURPOSE OF INSTALLING EMERGENCY VEHICLE PREEMPTION EQUIPMENT AS SHOWN PER PLAN INDICATED IN THE SCHEDULE OF QUANTITIES. ALL OTHER EQUIPMENT SHOWN SHALL BE DISREGARDED.**

*** ADDED EV PREEMPTION LOCATION NO. 12**

FILE NAME = 0924-PLAN-16 - IDOT P01	USER NAME =	DESIGNED - MFS	REVISED - 10-13-08 *	STATE OF ILLINOIS DEPARTMENT OF TRANSPORTATION	PROPOSED EMERGENCY VEHICLE PREEMPTION 142ND STREET & WOODLAWN AVENUE TRAFFIC SIGNAL PLAN		F.A.U. RTE. 1599	SECTION 09-00114-00-TL	COUNTY COOK	TOTAL SHEETS 43	SHEET NO. 34	
	PLOT SCALE =	CHECKED - PKB	REVISED -		SCALE: 1"=20'	SHEET NO. 34	OF 43 SHEETS	STA. TO STA.	CONTRACT NO. 63317			
	PLOT DATE = 10-13-08	DRAWN - PS	REVISED -		FED. ROAD DIST. NO. 1 ILLINOIS FED. AID PROJECT ARA-9003(536)							
		CHECKED - AG	REVISED -									