

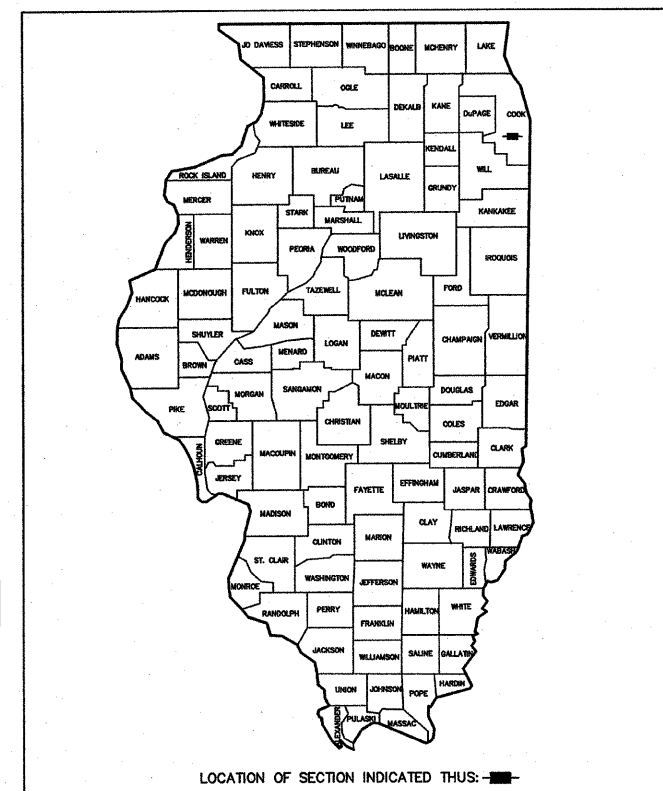
FAU RTE	SECTION	COUNTY	TOTAL SHEETS	SHEET NO.
FAU 1030	09-00089-00-RS	COOK	14	1
F.H.W.A. REG.	ILLINOIS	PROJECT ARA-M-9003(278)		

CONTRACT NO. 63319

STATE OF ILLINOIS  
DEPARTMENT OF TRANSPORTATION  
DIVISION OF HIGHWAYS

**PLANS FOR PROPOSED  
FEDERAL AID HIGHWAY**

FAU RTE. 1030 (CENTRAL PARK AVENUE)  
FROM 99TH STREET (FAU 1567) TO 91ST STREET (FAU 3776)  
LAPP RESURFACING  
SECTION NO. 09-00089-00-RS  
PROJECT ARA-M-9003(278)  
VILLAGE OF EVERGREEN PARK  
COOK COUNTY  
C-91-484-09



- INDEX OF SHEETS**
- COVER SHEET, INDEX OF SHEETS, LOCATION MAP, INDEX OF STATE STANDARDS
  - GENERAL NOTES, SUMMARY OF QUANTITIES
  - TYPICAL CROSS SECTIONS, HOT-MIX ASPHALT MIXTURE REQUIREMENTS
  - TYPICAL ALLEY RETURN, JOINT, AND DRIVEWAY DETAILS AND CURB & GUTTER DETAIL AT DRAINAGE STRUCTURE
  - PLAN: CENTRAL PARK AVENUE (RESURFACING) - 99TH STREET TO 91ST STREET
  - PLAN: CENTRAL PARK AVENUE (PAVEMENT MARKINGS) - 99TH STREET TO 91ST STREET
  - DISTRICT ONE TYPICAL PAVEMENT MARKINGS
  - TRAFFIC CONTROL AND PROTECTION FOR SIDEROADS, INTERSECTIONS, AND DRIVEWAYS
  - SIGNING FOR FLAGGING OPERATION AT WORK ZONE OPENINGS
  - CURB OR CURB AND GUTTER REMOVAL AND REPLACEMENT
  - FRAMES AND LIDS ADJUSTMENTS WITH MILLING
  - BUTT JOINT AND HOT-MIX ASPHALT TAPER DETAILS

**STATE STANDARDS**

- 000001-05 STANDARD SYMBOLS, ABBREVIATIONS, AND PATTERNS
- 424001-05 CURB RAMPS FOR SIDEWALK
- 442201-03 CLASS C AND D PATCHES
- 604001-03 FRAME & LIDS, TYPE 1
- 606001-04 CONCRETE CURB AND COMBINATION CONCRETE CURB & GUTTER
- 701501-05 URBAN LANE CLOSURE, 2 L, 2 W UNDIVIDED
- 701701-06 URBAN LANE CLOSURE, MULTILANE INTERSECTION
- 701801-04 LANE CLOSURE MULTILANE 1W OR 2W CROSSWALK OR SIDEWALK CLOSURE
- 701901-01 TRAFFIC CONTROL DEVICES
- 780001-02 TYPICAL PAVEMENT MARKINGS

**PROJECT LOCATION MAP**

N.T.S.

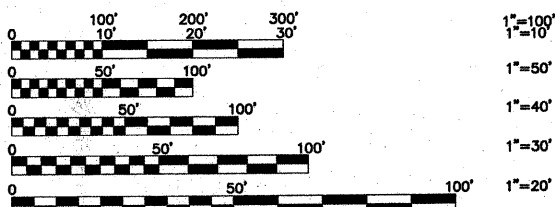
CENTRAL PARK AVE.  
PROJECT ENDS  
AT STA. 53+76

CENTRAL PARK AVE.  
CONTRACT OMISSION  
AT STA. 27+07 TO STA 27+95

**TRAFFIC DATA**

ADT:  
CENTRAL PARK AVENUE 2,867 (2008)

POSTED SPEED	DESIGN SPEED
25 MPH (EXISTING)	25 MPH (EXISTING)
25 MPH (PROPOSED)	25 MPH (PROPOSED)

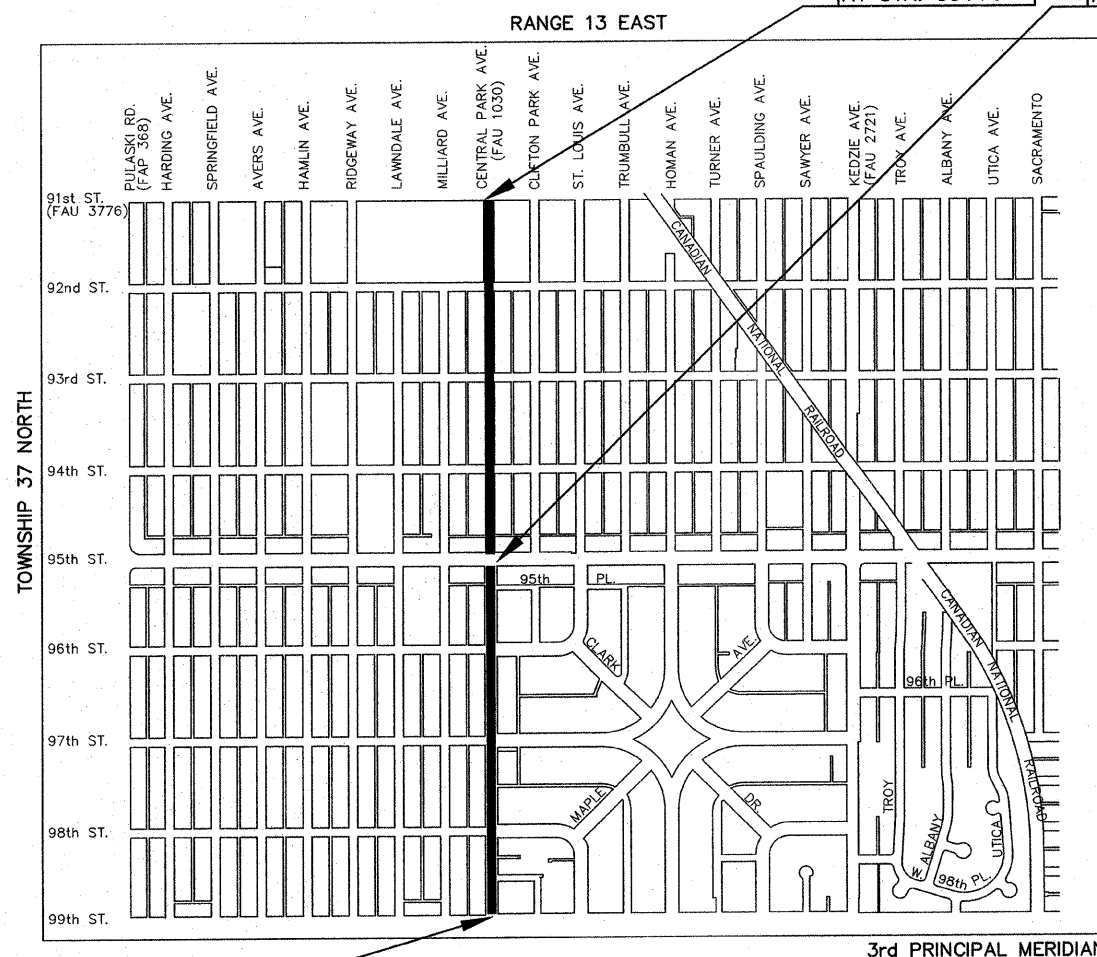


FULL SIZE PLANS HAVE BEEN PREPARED USING STANDARD ENGINEERING SCALES. REDUCED SIZED PLANS WILL NOT CONFORM TO STANDARD SCALES. IN MAKING MEASUREMENTS ON REDUCED PLANS, THE ABOVE SCALES MAY BE USED.

**J.U.L.I.E.**  
JOINT UTILITY LOCATION INFORMATION FOR EXCAVATION  
CALL 811  
Know what's below.  
Call before you dig.

**Frank Novotny & Associates, Inc.**  
Civil Engineers/Municipal Consultants  
825 Midway Drive • Willowbrook, IL • 60527 • Telephone: (630) 887-8640 • Fax: (630) 887-0132  
ILLINOIS PROFESSIONAL DESIGN FIRM NO. 154-000828

REVISIONS			
NO.	BY	DATE	DESCRIPTION
1	THK	10/19/09	PER I.D.O.T. REVIEW
2	THK	10/23/09	PER I.D.O.T. REVIEW



CENTRAL PARK AVE.  
PROJECT BEGINS  
AT STA. 1+33

DENOTES LOCATION OF IMPROVEMENT  
IN LYONS TOWNSHIP

LENGTH OF PROJECT

GROSS LENGTH OF PROJECT 5,243 FEET (0.9930 MILES)  
NET LENGTH OF PROJECT 5,155 FEET (0.9763 MILES)

STATE OF ILLINOIS  
DEPARTMENT OF TRANSPORTATION  
DIVISION OF HIGHWAYS

APPROVED 10-23 2009

VILLAGE PRESIDENT James J. Sexton  
JAMES SEXTON, MAYOR

PASSED October 27, 2009  
C. Heit  
DISTRICT #1 ENGINEER OF LOCAL ROADS & STREETS

RELEASING FOR BID  
BASED ON LIMITED  
REVIEW October 29, 2009  
Diana M. O'Keefe  
DEPUTY DIRECTOR OF HIGHWAYS, REGION #1 ENGINEER

Timothy H. Klass  
TIMOTHY H. KLASS, P.E.  
IL. P.E. NO. 062-06111  
EXPIRES 11-30-11  
10-23-09  
DATE

SEAL

PRINTED BY THE AUTHORITY  
OF THE STATE OF ILLINOIS

FIELD ENGINEER: MELCHOR MANGOBA (847)705-4408

CONTRACT NO. 63319

FNA JOB # 08197