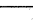
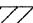
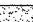
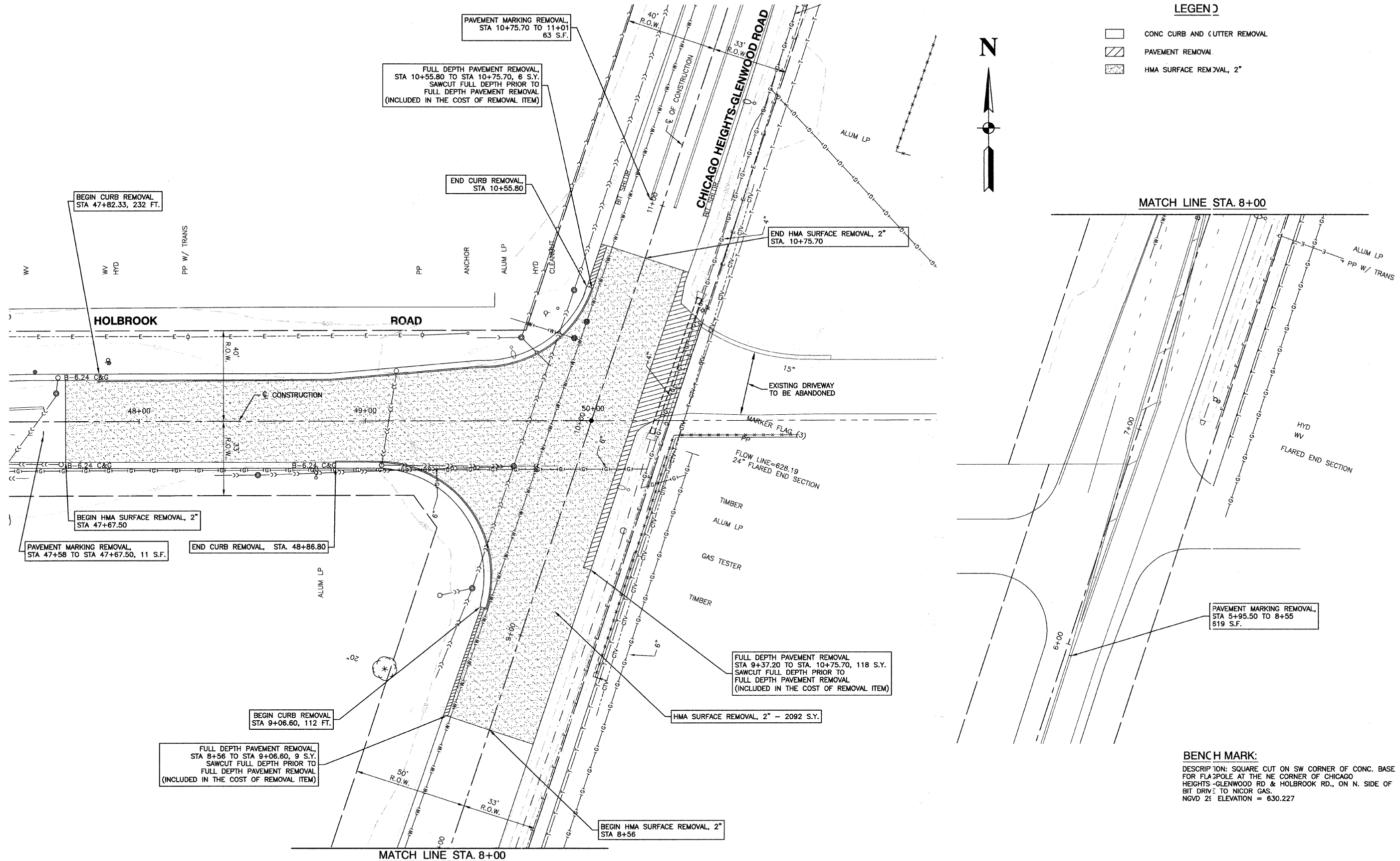


LEGEND

-  CONC CURB AND CUTTER REMOVAL
-  PAVEMENT REMOVAL
-  HMA SURFACE REMOVAL, 2"



MATCH LINE STA. 8+00

MATCH LINE STA. 8+00

**BENCH MARK:**  
 DESCRIPTION: SQUARE CUT ON SW CORNER OF CONC. BASE FOR FLAGPOLE AT THE NE CORNER OF CHICAGO HEIGHTS-GLENWOOD RD & HOLBROOK RD., ON N. SIDE OF BIT DRIVE TO NICOR GAS.  
 NGVD 2<sup>nd</sup> ELEVATION = 630.227

FILE NAME = 05567-PLAN-01 - EXIST	USER NAME =	DESIGNED -- BDB/JRA	REVISED --	<b>STATE OF ILLINOIS</b> <b>DEPARTMENT OF TRANSPORTATION</b>	<b>CHICAGO HEIGHTS-GLENWOOD ROAD AND HOLBROOK ROAD</b> <b>INTERSECTION IMPROVEMENTS</b> <b>EXISTING CONDITIONS &amp; REMOVAL PLAN</b>			F.A.I. RTE	SECTION	COUNTY	TOTAL SHEETS	SHEET NO.
	PLOT SCALE =	DRAWN -- JJB	REVISED --					3601	09-00050-00-TL	COOK	31	6
PLOT DATE = 10-29-09	CHECKED -- JRA	REVISED --		SCALE: 1"=20'	SHEET NO. 6	OF 31 SHEETS	STA. TO STA.	FED. ROAD DIST. NO. 1 ILLINOIS FED. AID PROJECT ARA-9003 (332) CONTRACT NO. 63320				