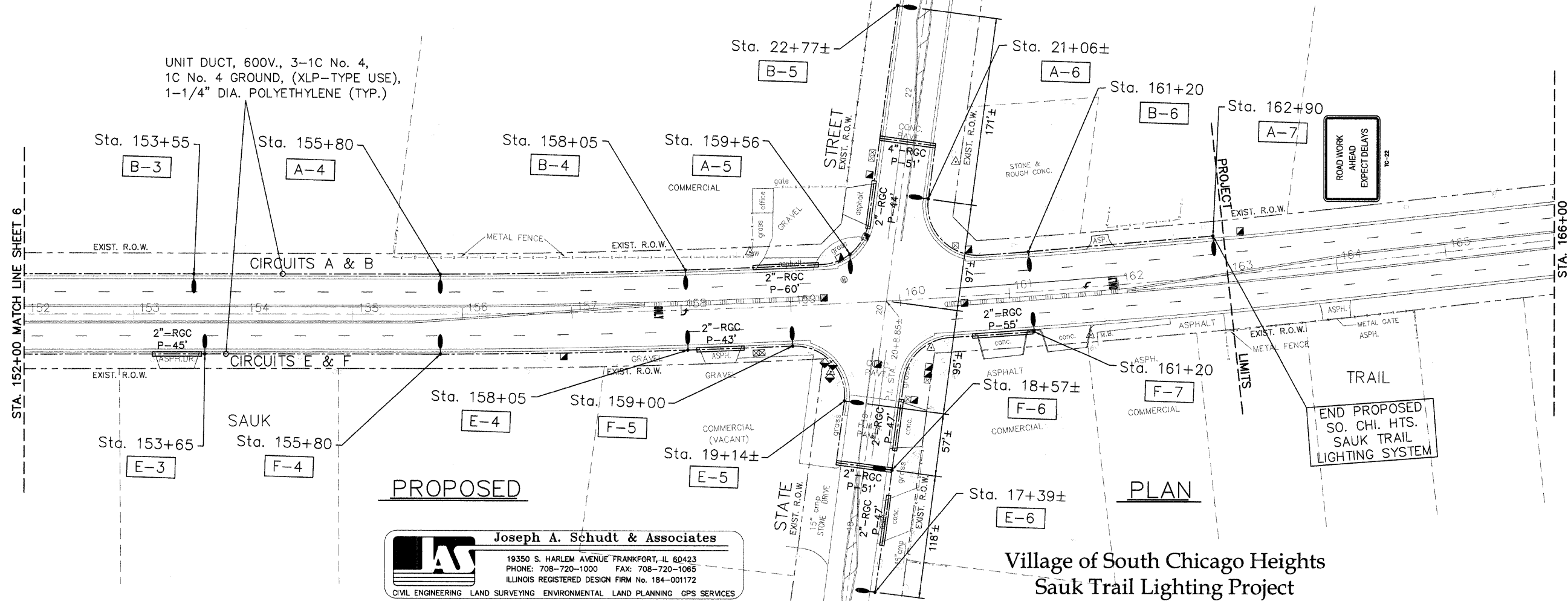
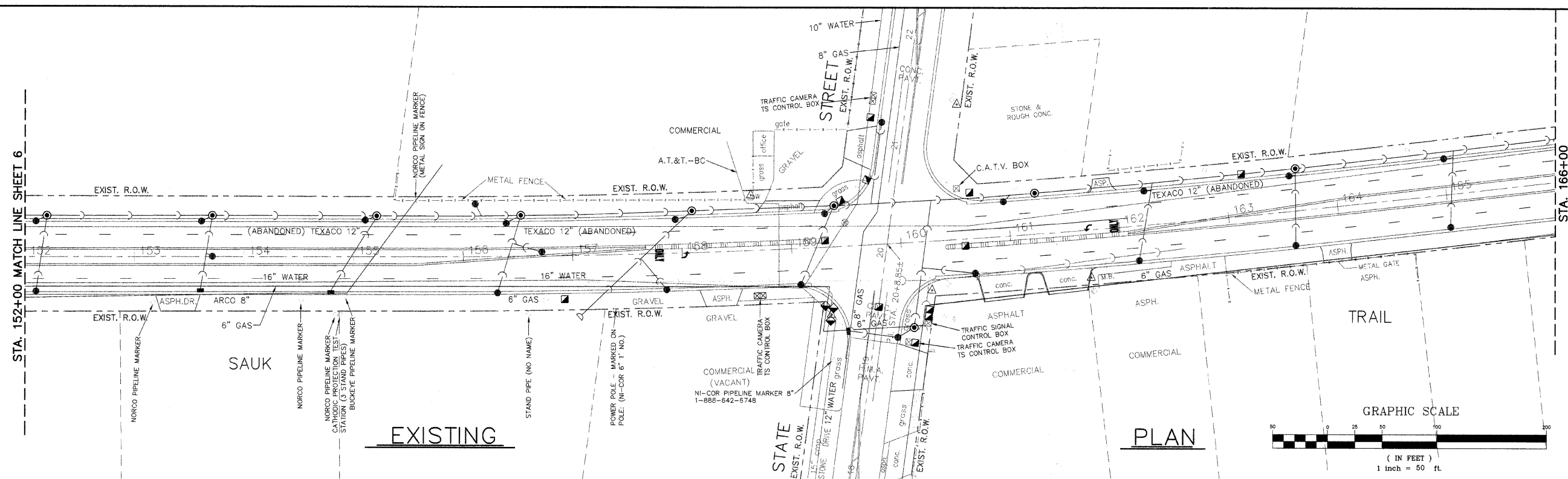


STA. 152+00 MATCH LINE SHEET 6

STA. 166+00

STA. 152+00 MATCH LINE SHEET 6

STA. 166+00



**Joseph A. Schudt & Associates**  
 19350 S. HARLEM AVENUE FRANKFORT, IL 60423  
 PHONE: 708-720-1000 FAX: 708-720-1065  
 ILLINOIS REGISTERED DESIGN FIRM No. 184-001172  
 CIVIL ENGINEERING LAND SURVEYING ENVIRONMENTAL LAND PLANNING GPS SERVICES

Village of South Chicago Heights  
 Sauk Trail Lighting Project

FILE NAME =	USER NAME =	DESIGNED - S.M.H.	REVISED - 8-26-09	STATE OF ILLINOIS DEPARTMENT OF TRANSPORTATION	Plan Sheet	F.A.P. RTE.	SECTION	COUNTY	TOTAL SHEETS	SHEET NO.
		DRAWN - J.A.R.	REVISED - 10-12-09		Sta. 152+00 to 162+90	1632	09-00059-00-LT	COOK	15	7
		CHECKED - S.M.H.	REVISED - 11-12-09		SCALE: 1" = 50'	SHEET NO. 7 OF 15 SHEETS		CONTRACT No. 63327		
		DATE - 7-31-09	REVISED - 11-16-09		STA. 152+00 TO STA. 162+90		ILLINOIS FED. AID PROJECT AREA - 9003 (367)		09-027-LITS.dwg	