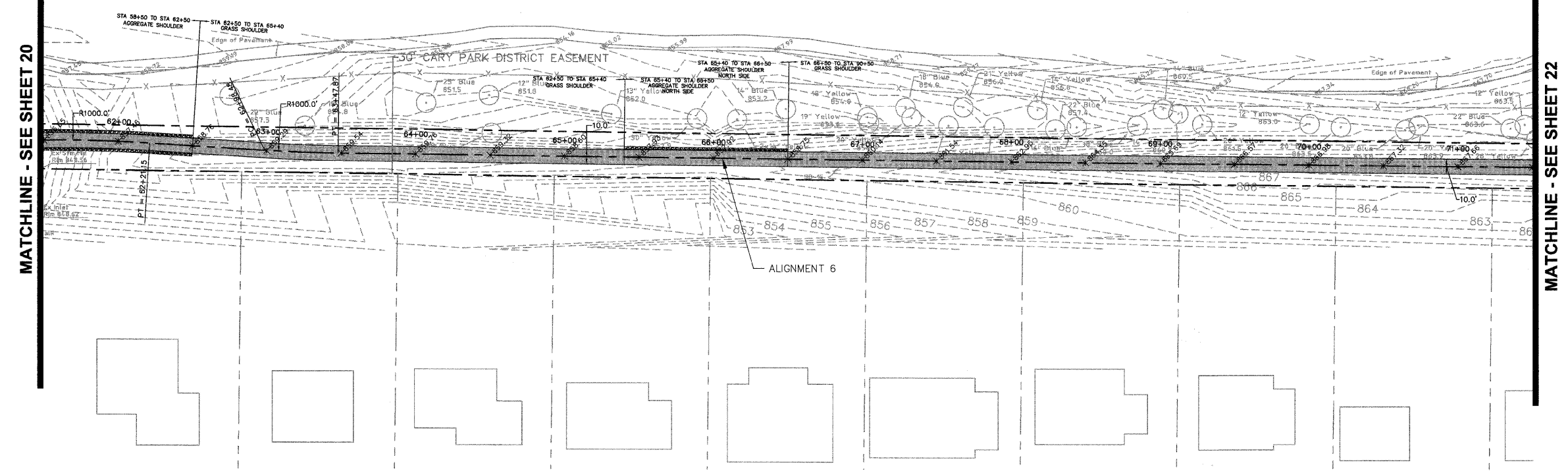


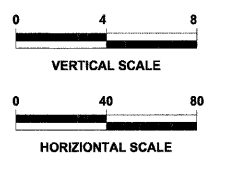
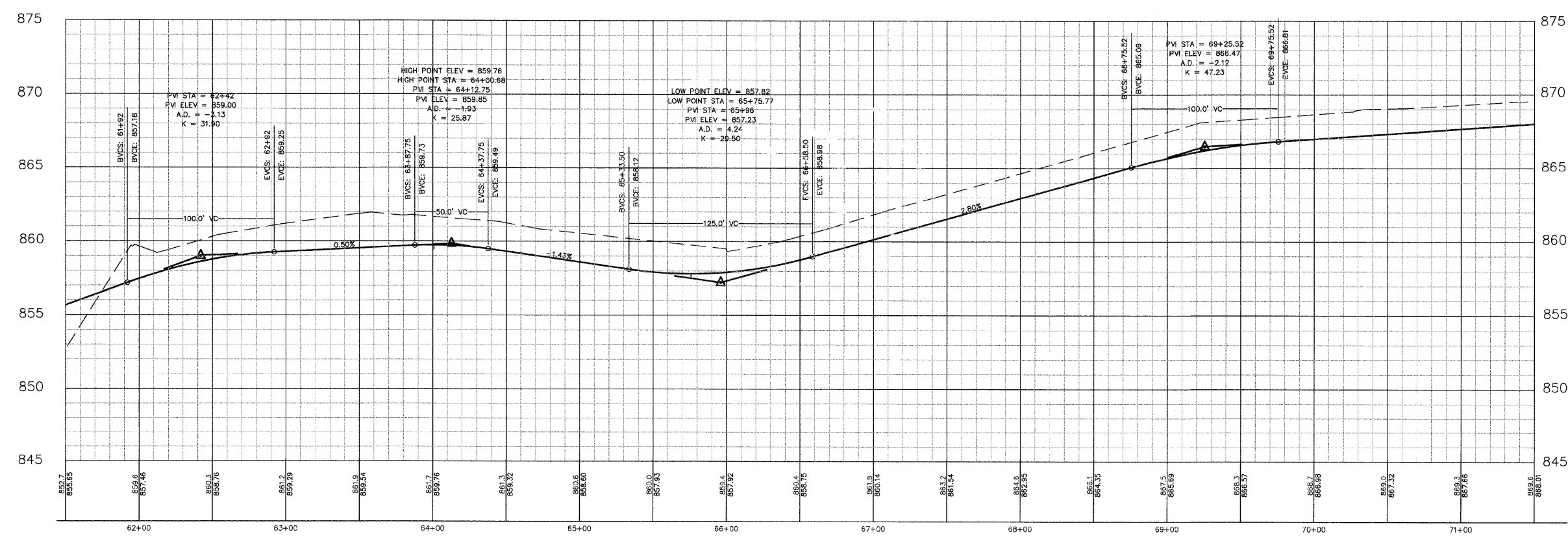
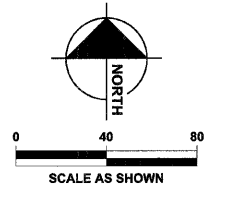
PLAN LEGEND:

- PROPOSED SPOT ELEVATIONS
- PROPOSED BIKE TRAIL
- PROPOSED AGGREGATE SHOULDER
- PROPERTY LINE

FOXFORD HILLS GOLF CLUB



CARY COMMUNITY TRAIL ALIGNMENT 6 - STA. 61+50 TO 71+50



DATUM CONVERSION FOR CARY COMMUNITY BIKE TRAIL TOPOGRAPHIC SURVEY

THE DATUM USED FOR THE CARY COMMUNITY BIKE TRAIL TOPOGRAPHIC SURVEY PERFORMED BY HAZGER ENGINEERING, LLC, DATED FEB. 2, 2008 (THE TOPO) WAS BASED ON MH 48 ON PAGE 25 OF 36 ON THE MANHARD CONSULTING LTD. RECORD DRAWINGS FOR FOXFORD HILLS SUBDIVISION - PHASE 1 DATED MARCH 6, 2007. THIS DATUM WAS REQUESTED TO BE USED IN ORDER FOR THE TOPO TO STAY CONSISTENT WITH PROJECTS DONE IN THE AREA (FOXFORD HILLS). THE PUBLISHED RECORD ELEVATION FOR MH 48 WAS 861.45 FEET. THE ELEVATION WAS USED TO ESTABLISH THE ELEVATIONS REPORTED BY THE TOPO. IT IS UNKNOWN TO HAZGER ENGINEERING, LLC AS TO THE SOURCE BENCHMARK OR PUBLISHED DATUM THAT WAS ORIGINALLY USED FOR THE RECORD DRAWINGS OF FOXFORD HILLS SUBDIVISION PROJECT, DUE TO THE FACT HAZGER ENGINEERING, LLC WAS NEVER SUPPLIED THIS INFORMATION. HOWEVER, HAZGER ENGINEERING, LLC DID CHECK INTO MH 48 ELEVATION WITH ITS RTK GPS UNIT THAT IS BASED ON KARA COMPANY'S RTK CORRS REFERENCE NETWORK USING NAVD 83 (GEOID 03) AS ITS REFERENCE DATUM. HAZGER ENGINEERING, LLC FOUND MH 48 ELEVATION (861.45) TO BE 0.11' HIGHER THAN THAT MEASURED WITH THE GPS EQUIPMENT (861.34) AND 88 (GEOID 03) AS ITS REFERENCE DATUM. HAZGER ENGINEERING, LLC THEREFORE DUE TO VERTICAL ACCURACY OF THE GPS RTK MEASUREMENT (PLUS OR MINUS 0.01') IT IS UNKNOWN TO HAZGER ENGINEERING, LLC AS TO THE TRUE PUBLISHED DATUM USED FOR THE TOPO WITH OUT BEING SUPPLIED THE SOURCE BENCHMARK OR CONTROL INFORMATION THE FOXFORD HILLS SUBDIVISION WAS BUILT ON. BASED ON HAZGER ENGINEERING, LLC GPS RTK MEASUREMENT OF MH 48 THE DATUM CONVERSION FOR THE TOPO IS AS FOLLOWS:

- BENCHMARKS**
- SOURCE BENCHMARK**
DESCRIPTION: MANHOLE #46 FROM THE ASBUILT RECORD DRAWINGS BY MANHARD CONSULTING LTD. DATED 3-1-07 FOR THE FOXFORD HILLS SUBDIVISION-PHASE 1 IN THE VILLAGE OF CARY, ILLINOIS.
LOCATION: 120' NORTHEAST OF THE OAKMAN DRIVE AND PARKSTONE DRIVE INTERSECTION ON OAKMAN DRIVE.
ELEVATION: 861.45
 - SITE BENCHMARKS**
DESCRIPTION: IRON PIPE
LOCATION: 1000' EAST OF THE INTERSECTION OF 1ST AND THREE OAKS ROAD, 584' NORTH OF THE NORTH SIDE OF THREE OAKS ROAD, 31' NORTHEAST OF STORM MANHOLE, AND 28' NORTHWEST OF POWER POLE.
ELEVATION: 854.94
 - HE CP #1**
DESCRIPTION: "PIV" NAIL IN EDGE OF PAVEMENT.
LOCATION: 582' WEST OF THE INTERSECTION OF RAMSON BRIDGE ROAD AND HWY TRAIL, 45' SOUTHWEST OF TREE 57
SOUTHEAST OF IRON ROD, AND 10' SOUTH OF CONCRETE WALK.
ELEVATION: 860.97
 - HE CP #2**
DESCRIPTION: RAIL ROAD SPIKE.
LOCATION: NORTHWEST CORNER OF INTERSECTION OF CRYSTAL LAKE ROAD AND RAMSON BRIDGE ROAD, 22' SOUTHWEST OF FENCE CORNER, 18' SOUTH-WEST OF POWER POLE, AND 11' NORTHWEST OF PAVEMENT.
ELEVATION: 823.23

This document, together with the concepts and designs presented herein, is an instrument of service, to be used only for the specific purpose and client for which it was prepared. Reuse of this document for any other project without the express written consent of the engineer is prohibited. The engineer and its staff shall not be responsible for any errors or omissions in this document. The engineer and its staff shall not be responsible for any damages, including consequential damages, arising from the use of this document. The engineer and its staff shall not be responsible for any claims, damages, or liabilities, including consequential damages, arising from the use of this document. The engineer and its staff shall not be responsible for any claims, damages, or liabilities, including consequential damages, arising from the use of this document. The engineer and its staff shall not be responsible for any claims, damages, or liabilities, including consequential damages, arising from the use of this document.

DESIGNED	JWH	REVISED	
DRAWN	LES	REVISED	
CHECKED	JMM	REVISED	
DATE	10/02/2009	REVISED	

**STATE OF ILLINOIS
DEPARTMENT OF TRANSPORTATION**

**CARY PARK DISTRICT
CARY COMMUNITY TRAIL**

**TRAIL ALIGNMENT
PLAN & PROFILE
STA. 61+50 TO STA. 71+50**

SECTION	COUNTY	TOTAL SHEETS	SHEET NO.
06-P4001-00-BR	MCHENRY	64	21
FED. ROAD DIST. NO. 1	ILLINOIS	CONTRACT NO. 63333	

