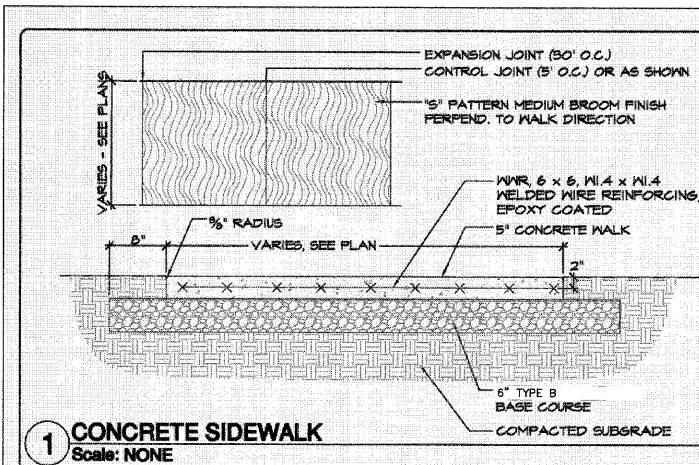


1 HOT MIX ASPHALT
Scale: 1" = 1'-0"

Cary Park District
255 Briargate Rd
Cary, Illinois 60013
(847) 639-4801

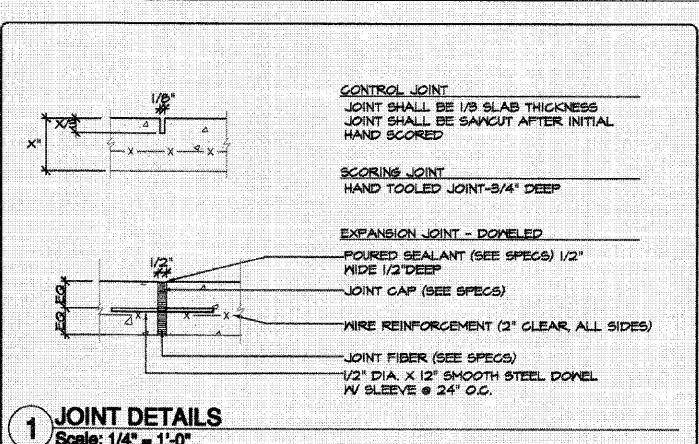
Construction Detail 13-01



1 CONCRETE SIDEWALK
Scale: NONE

Cary Park District
255 Briargate Rd
Cary, Illinois 60013
(847) 639-4801

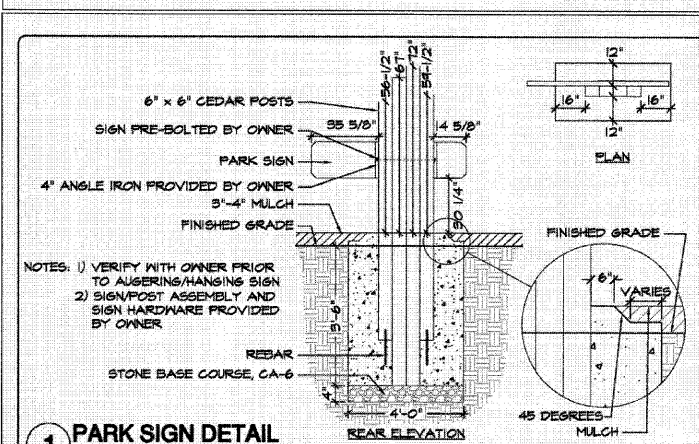
Construction Detail 13-02



1 JOINT DETAILS
Scale: 1/4" = 1'-0"

Cary Park District
255 Briargate Rd
Cary, Illinois 60013
(847) 639-4801

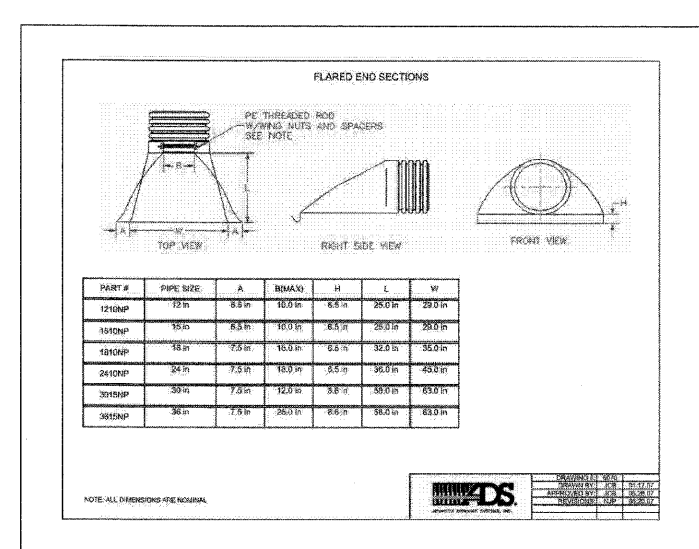
Construction Detail 13-03



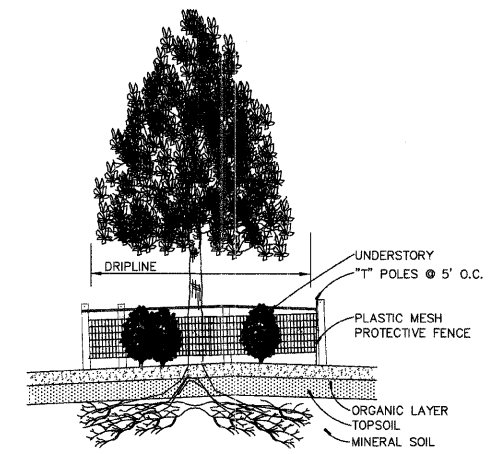
1 PARK SIGN DETAIL
Scale: NONE

Cary Park District
255 Briargate Rd
Cary, Illinois 60013
(847) 639-4801

Construction Detail 14-02

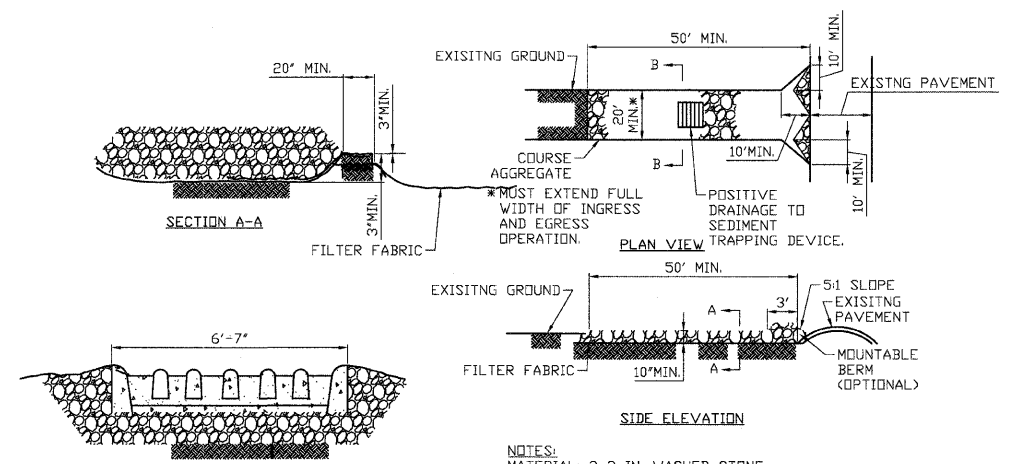


FLARED END SECTION
NOT TO SCALE



- EITHER PLASTIC OR WOOD ORANGE SNOW FENCING SHALL BE INSTALLED AT OR BEYOND THE DRIPLINE, UNLESS MORE SUBSTANTIAL FENCING IS REQUIRED.
- STAKES SHALL BE METAL "T" POLES SPACED NO FURTHER APART THAN 5' ON CENTER.
- FENCING SHALL NOT BE INSTALLED CLOSER TO THE TREE THAN THE DRIPLINE OF THOSE TREES TO BE SAVED. SPECIAL CIRCUMSTANCES SHALL BE REVIEWED BY THE CARY PARK DISTRICT.
- FENCING SHALL BE ERECTED PRIOR TO CONSTRUCTION. THE CARY PARK DISTRICT SHALL BE NOTIFIED ONCE THE FENCING IS INSTALLED FOR INSPECTION.
- UNDER NO CIRCUMSTANCE SHALL THE PROTECTIVE FENCING BE REMOVED WITHOUT PROPER APPROVAL FROM THE CARY PARK DISTRICT.
- NO PERSON SHALL CONDUCT ANY ACTIVITY WITHIN THE AREAS PROPOSED TO REMAIN. THIS SHALL INCLUDE, BUT NOT LIMITED TO:
 - NO SOLVENTS OR CHEMICALS WITHIN THE PROTECTED AREAS.
 - NO BUILDING MATERIALS OR CONSTRUCTION EQUIPMENT WITHIN THE PROTECTED AREAS.
 - NO GRADE CHANGES, INCLUDING FILL, WITHIN THE PROTECTED AREAS.
 - NO REMOVAL OR VEGETATION FROM THE GROUND, WITHOUT PERMISSION FROM THE PROPER REVIEWING AUTHORITY.
- ANY REQUIRED SWALE NEEDS TO BE DIRECTED AROUND THE PROTECTED AREAS. IN INSTANCES WHERE SWALES ARE APPROVED THROUGH A PROTECTED AREA, THE SWALES NEED TO BE HAND DUG. MACHINERY OF ANY KIND IS PROHIBITED.

TREE PROTECTION DETAIL
NOT TO SCALE



- NOTES:**
- MATERIAL: 2-3 IN. WASHED STONE
 - THICKNESS: 10 IN MINIMUM
 - WIDTH: 20 FT MINIMUM OR FULL WIDTH OF ENTRANCE/EXIT ROADWAY
 - LENGTH: 50 FT MINIMUM. THE LENGTH CAN BE SHORTER FOR SMALL SITES SUCH AS FOR AN INDIVIDUAL HOME.
 - WASHING FACILITY (OPTIONAL): LEVEL AREA WITH 3 IN WASHED STONE MINIMUM OR A COMMERCIAL RACK, AND WASTE WATER DIVERTED TO A SEDIMENT TRAP OR BASIN.
 - GEOTEXTILE FABRIC UNDERLINER: MAY BE USED UNDER WET CONDITIONS OR FOR SOLIDS WITHIN A HIGH SEASONAL WATER TABLE TO PROVIDE GREATER BEARING STRENGTH.

CONSTRUCTION ENTRANCE
NOT TO SCALE

This document, together with the concepts and design presented herein, is intended only for the specific purpose and site for which it was prepared. Reuse of this document for any other project without the written consent of the engineer is strictly prohibited. © 2009 J. D. & S. J. Engineering, Inc.

DESIGNED --	JWH	REVISED	
DRAWN --	LES	REVISED	
CHECKED --	JMM	REVISED	
DATE --	10/02/2009	REVISED	

STATE OF ILLINOIS
DEPARTMENT OF TRANSPORTATION

CARY PARK DISTRICT
CARY COMMUNITY TRAIL

DETAILS

SECTION	COUNTY	TOTAL SHEETS	SHEET NO.
06-P4001-00-BR	MCHENRY	64	63
FED. ROAD DIST. NO. 1	ILLINOIS	CONTRACT NO. 63333	

