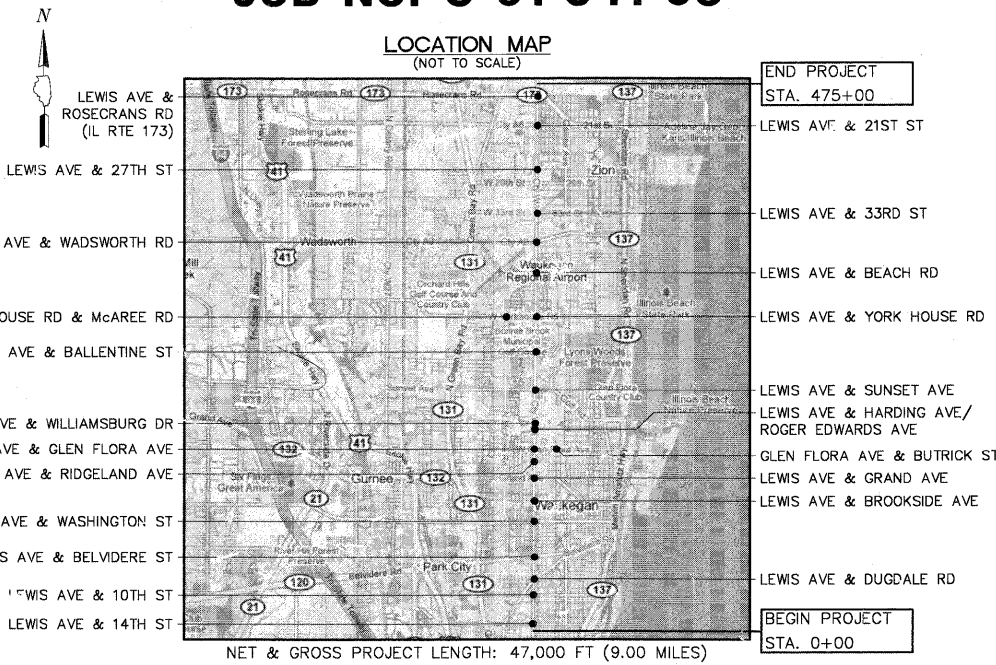


INDEX OF SHEETS

1. TITLE SHEET
- 2.-3. SUMMARY OF QUANTITIES AND GENERAL NOTES
4. TEMPORARY TRAFFIC SIGNAL INSTALLATION AND REMOVAL OF EX. TRAFFIC SIGNAL EQUIPMENT-LEWIS AVE AT 14TH ST
5. TEMPORARY CABLE PLAN AND PHASE DESIGNATION DIAGRAM-LEWIS AVENUE AT 14TH STREET
6. TRAFFIC SIGNAL MODERNIZATION PLAN-LEWIS AVENUE AT 14TH STREET
7. SCHEDULE OF QUANTITIES, CABLE PLAN AND PHASE DESIGNATION DIAGRAM-LEWIS AVENUE AT 14TH STREET
8. TEMPORARY TRAFFIC SIGNAL INSTALLATION AND REMOVAL OF EX. TRAFFIC SIGNAL EQUIPMENT-LEWIS AVE AT 10TH ST
9. TEMPORARY CABLE PLAN AND PHASE DESIGNATION DIAGRAM-LEWIS AVENUE AT 10TH STREET
10. TRAFFIC SIGNAL MODERNIZATION PLAN-LEWIS AVENUE AT 10TH STREET
11. SCHEDULE OF QUANTITIES, CABLE PLAN, AND PHASE DESIGNATION DIAGRAM-LEWIS AVENUE AT 10TH STREET
12. TEMPORARY TRAFFIC SIGNAL INSTALLATION AND REMOVAL OF EX. TRAFFIC SIGNAL EQUIPMENT-LEWIS AVE AT DUGDALE RD
13. TEMPORARY CABLE PLAN AND PHASE DESIGNATION DIAGRAM-LEWIS AVENUE AT DUGDALE ROAD
14. TRAFFIC SIGNAL MODERNIZATION PLAN-LEWIS AVENUE AT DUGDALE ROAD
15. SCHEDULE OF QUANTITIES, CABLE PLAN AND PHASE DESIGNATION DIAGRAM-LEWIS AVENUE AT DUGDALE ROAD
16. TRAFFIC SIGNAL MODERNIZATION PLAN-LEWIS AVENUE AT BELVDERE ROAD
17. SCHEDULE OF QUANTITIES, CABLE PLAN AND PHASE DESIGNATION DIAGRAM-LEWIS AVENUE AT BELVDERE ROAD
18. TRAFFIC SIGNAL MODERNIZATION PLAN-LEWIS AVENUE AT WASHINGTON STREET
19. SCHEDULE OF QUANTITIES, CABLE PLAN AND PHASE DESIGNATION DIAGRAM-LEWIS AVENUE AT WASHINGTON STREET
20. TEMPORARY TRAFFIC SIGNAL INSTALLATION AND REMOVAL OF EX. TRAFFIC SIGNAL EQUIPMENT-LEWIS AVE AT BROOKSIDE AVE
21. TEMPORARY CABLE PLAN AND PHASE DESIGNATION DIAGRAM-LEWIS AVENUE AT BROOKSIDE AVENUE
22. TRAFFIC SIGNAL MODERNIZATION PLAN-LEWIS AVENUE AT BROOKSIDE AVENUE
23. SCHEDULE OF QUANTITIES, CABLE PLAN AND PHASE DESIGNATION DIAGRAM-LEWIS AVENUE AT BROOKSIDE AVENUE
24. TRAFFIC SIGNAL MODERNIZATION PLAN-LEWIS AVENUE AT GRAND AVENUE
25. SCHEDULE OF QUANTITIES, CABLE PLAN AND PHASE DESIGNATION DIAGRAM-LEWIS AVENUE AT GRAND AVENUE
26. TEMPORARY TRAFFIC SIGNAL INSTALLATION AND REMOVAL OF EX. TRAFFIC SIGNAL EQUIPMENT-LEWIS AVE AT RIDGELAND AVE
27. TEMPORARY CABLE PLAN AND PHASE DESIGNATION DIAGRAM-LEWIS AVENUE AT RIDGELAND AVENUE
28. TRAFFIC SIGNAL MODERNIZATION PLAN-LEWIS AVENUE AT RIDGELAND AVENUE
29. SCHEDULE OF QUANTITIES, CABLE PLAN AND PHASE DESIGNATION DIAGRAM-LEWIS AVENUE AT RIDGELAND AVENUE
30. TEMPORARY TRAFFIC SIGNAL INSTALLATION AND REMOVAL OF EX. TRAFFIC SIGNAL EQUIPMENT-LEWIS AVE AT GLEN FLORA AVE
31. TEMPORARY CABLE PLAN AND PHASE DESIGNATION DIAGRAM-LEWIS AVENUE AT GLEN FLORA AVENUE
32. TRAFFIC SIGNAL MODERNIZATION PLAN-LEWIS AVENUE AT GLEN FLORA AVENUE
33. SCHEDULE OF QUANTITIES, CABLE PLAN AND PHASE DESIGNATION DIAGRAM-LEWIS AVENUE AT GLEN FLORA AVENUE
34. TRAFFIC SIGNAL MODERNIZATION PLAN-GLEN FLORA AVENUE AT BUTRICK STREET
35. SCHEDULE OF QUANTITIES, CABLE PLAN AND PHASE DESIGNATION DIAGRAM-GLEN FLORA AVENUE AT BUTRICK STREET
36. TEMPORARY TRAFFIC SIGNAL INSTALLATION AND REMOVAL OF EX. TRAFFIC SIGNAL EQUIPMENT-LEWIS AVE AT HARDING AVE/ROGER EDWARDS AVE
37. TEMPORARY CABLE PLAN AND PHASE DESIGNATION DIAGRAM-LEWIS AVE AT HARDING AVE/ROGER EDWARDS AVE
38. TRAFFIC SIGNAL MODERNIZATION PLAN-LEWIS AVE AT HARDING AVE/ROGER EDWARDS AVE
- 39.-40. SCHEDULE OF QUANTITIES, CABLE PLAN AND PHASE DESIGNATION DIAGRAM-LEWIS AVE AT HARDING AVE/ROGER EDWARDS AVE
41. TEMPORARY TRAFFIC SIGNAL INSTALLATION AND REMOVAL OF EX. TRAFFIC SIGNAL EQUIPMENT-LEWIS AVE AT WILLIAMSBURG DR
42. TEMPORARY CABLE PLAN AND PHASE DESIGNATION DIAGRAM-LEWIS AVENUE AT WILLIAMSBURG DRIVE
43. TRAFFIC SIGNAL MODERNIZATION PLAN-LEWIS AVENUE AT WILLIAMSBURG DRIVE
44. SCHEDULE OF QUANTITIES, CABLE PLAN AND PHASE DESIGNATION DIAGRAM-LEWIS AVENUE AT WILLIAMSBURG DRIVE
45. TEMPORARY TRAFFIC SIGNAL INSTALLATION AND REMOVAL OF EX. TRAFFIC SIGNAL EQUIPMENT-LEWIS AVE AT SUNSET AVE
46. TEMPORARY CABLE PLAN AND PHASE DESIGNATION DIAGRAM-LEWIS AVENUE AT SUNSET AVENUE
47. TRAFFIC SIGNAL MODERNIZATION PLAN-LEWIS AVENUE AT SUNSET AVENUE
48. SCHEDULE OF QUANTITIES, CABLE PLAN AND PHASE DESIGNATION DIAGRAM-LEWIS AVENUE AT SUNSET AVENUE
49. TEMPORARY TRAFFIC SIGNAL INSTALLATION AND REMOVAL OF EX. TRAFFIC SIGNAL EQUIPMENT-LEWIS AVE, AT BALLENTINE STREET
50. TEMPORARY CABLE PLAN AND PHASE DESIGNATION DIAGRAM-LEWIS AVENUE AT BALLENTINE STREET
51. TRAFFIC SIGNAL MODERNIZATION PLAN-LEWIS AVENUE AT BALLENTINE STREET
52. SCHEDULE OF QUANTITIES, CABLE PLAN AND PHASE DESIGNATION DIAGRAM-LEWIS AVENUE AT BALLENTINE STREET
53. TEMPORARY TRAFFIC SIGNAL INSTALLATION AND REMOVAL OF EX. TRAFFIC SIGNAL EQUIPMENT-LEWIS AVE AT YORK HOUSE RD
54. TEMPORARY CABLE PLAN AND PHASE DESIGNATION DIAGRAM-LEWIS AVENUE AT YORK HOUSE ROAD
55. TRAFFIC SIGNAL MODERNIZATION PLAN-LEWIS AVENUE AT YORK HOUSE ROAD
56. SCHEDULE OF QUANTITIES, CABLE PLAN AND PHASE DESIGNATION DIAGRAM-LEWIS AVENUE AT YORK HOUSE ROAD
- 57.-67. INTERCONNECT PLANS
- 68.-69. INTERCONNECT SCHEMATIC AND SCHEDULE OF QUANTITIES-LEWIS AVE. FROM 14TH STREET TO YORK HOUSE ROAD
70. LDDOT MAST ARM MOUNTED STREET NAME SIGNS
71. FIBER SPLICING DIAGRAM 22-LEWIS AVENUE FROM 14TH STREET TO YORK HOUSE ROAD
72. FIBER SPLICING DIAGRAM 24-LEWIS AVENUE FROM YORK HOUSE ROAD TO ROSECRANS ROAD (IL RTE 173)
73. CABINET DETAIL 34-LEWIS AVENUE/IL ROUTE 120 TO YORK HOUSE ROAD
74. CABINET DETAIL 36-LEWIS AVENUE/YORK HOUSE ROAD TO ROSECRANS ROAD (IL RTE 173)
75. CABINET DETAIL 28-M4/1-94 & IL RTE 132 (GRAND AVENUE)
76. CABINET DETAIL 24-WASHINGTON STREET & IL RTE 131 (GREEN BAY ROAD)
- 77.-78. VIDEO DETECTION DETAILS
79. LDDOT CURB RAMPS WITH TRAFFIC SIGNAL POSTS AND MAST ARMS - SHEETS 1 & 2
- 80.-82. TYPICAL PAVEMENT MARKINGS FOR COUNTY HIGHWAYS
- 83.-86. DISTRICT ONE STANDARD TRAFFIC SIGNAL DESIGN DETAILS

STATE OF ILLINOIS
DEPARTMENT OF TRANSPORTATION
DIVISION OF HIGHWAYS
**PLANS FOR PROPOSED
FEDERAL AID HIGHWAY**
TRAFFIC SIGNAL MODERNIZATION AND
FIBER OPTIC COMMUNICATION SYSTEM
CONGESTION MITIGATION AND AIR QUALITY
FAU 2730 (LEWIS AVENUE)
14TH STREET TO ROSECRANS ROAD (IL RTE 173)
FEDERAL PROJECT NO. CMM-9003(071)
SECTION 08-00259-00-TL
LAKE COUNTY DIVISION OF TRANSPORTATION
JOB NO. C-91-541-08



- IDOT STANDARDS:
- 424001-05 CURB RAMPS FOR SIDEWALK
 - 606001-04 CONCRETE CURB TYPE B AND COMBINATION CONCRETE CURB AND GUTTER
 - 701001-02 OFF-ROAD OPERATIONS 2L, 2W, >15' AWAY
 - 701001-02 OFF-ROAD OPERATIONS, MULTILANE 15' TO 24' FROM PAVEMENT EDGE
 - 701006-03 OFF-ROAD OPERATIONS 2L, 2W, 15' TO 24" FROM PAVEMENT EDGE
 - 701011-02 OFF-ROAD MOVING OPERATIONS, 2L, 2W, DAY ONLY
 - 701301-03 LANE CLOSURE 2L, 2W, SHORT TIME OPERATIONS
 - 701501-05 URBAN LANE CLOSURE, 2L, 2W, UNDIVIDED
 - 701502-03 URBAN LANE CLOSURE, 2L, 2W, WITH BIDIRECTIONAL LEFT TURN LANE
 - 701602-04 URBAN LANE CLOSURE, MULTILANE 2W WITH BIDIRECTIONAL LEFT TURN LANE
 - 701606-06 URBAN LANE CLOSURE MULTILANE 2W WITH MOUNTABLE MEDIAN
 - 701701-06 URBAN LANE CLOSURE MULTILANE INTERSECTION
 - 701801-04 LANE CLOSURE MULTILANE 1W OR 2W CROSSWALK OR SIDEWALK CLOSURE
 - 701901-01 TRAFFIC CONTROL DEVICES
 - 814001-02 HANDHOLE
 - 814006-02 DOUBLE HANDHOLE
 - 857001-01 STANDARD PHASE DESIGNATION DIAGRAMS AND PHASE SEQUENCES
 - 862001-01 UNINTERRUPTIBLE POWER SUPPLY (UPS)
 - 873001-02 TRAFFIC SIGNAL GROUNDING AND BONDING
 - 877001-04 STEEL MAST ARM ASSEMBLY AND POLE, 16' THROUGH 55'
 - 877011-04 STEEL COMBINATION MAST ARM ASSEMBLY AND POLE 16' THROUGH 55'
 - 878001-08 CONCRETE FOUNDATION DETAILS
 - 880001-01 SPAN WIRE MOUNTED SIGNALS AND FLASHING BEACON INSTALLATION
 - 880006-01 TRAFFIC SIGNAL MOUNTING DETAILS

**GHA GEWALT HAMILTON
ASSOCIATES, INC.**
Consulting Engineers & Surveyors
850 Forest Edge Drive
Vernon Hills, IL 60061
847-478-9700
FAX: 847-478-9701

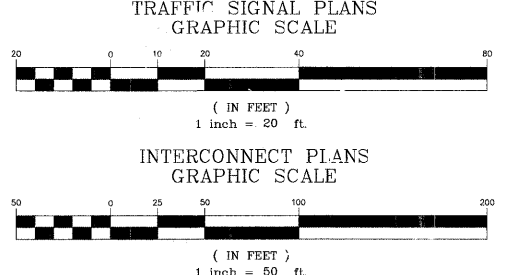
TRAFFIC DATE: _____
DESIGN SPEED: SOUTH OF SUNSET AVE = 35 MPH
NORTH OF SUNSET AVE = 40 MPH
NORTH OF YORK HOUSE RD = 50 MPH
POSTED SPEED: SOUTH OF SUNSET AVE = 30 MPH
NORTH OF SUNSET AVE = 35 MPH
NORTH OF YORK HOUSE RD = 45 MPH
25,000 BETWEEN YORK HOUSE RD & 29TH ST
17,000 BETWEEN 29TH ST & ROSECRANS RD (IL RTE 173)
20,100 BETWEEN SUNSET AVE & YORK HOUSE RD
22,100 BETWEEN SUNSET AVE & GLEN FLORA AVE
17,700 BETWEEN GLEN FLORA & WASHINGTON ST
13,700 SOUTH OF WASHINGTON ST
ADT: _____
FUNCTIONAL CLASSIFICATION: ARTERIAL

NOTE: SAFETY IS THE SOLE AND EXCLUSIVE RESPONSIBILITY OF THE CONTRACTOR



SIGNED: *Bruce L. Shrake*
BRUCE L. SHRAKE
DATE: 10/13/2009

FULL SIZE PLANS HAVE BEEN PREPARED USING STANDARD ENGINEERING SCALES. REDUCED SIZED PLANS WILL NOT CONFORM TO STANDARD SCALES. IN MAKING MEASUREMENTS ON REDUCED PLANS, THE BELOW SCALES MAY BE USED.



STATE OF ILLINOIS
DEPARTMENT OF TRANSPORTATION
DIVISION OF HIGHWAYS

APPROVED: *10/13/09* _____ 20
Mark J. Brubaker
LAKE COUNTY DIVISION OF TRANSPORTATION,
DIRECTOR OF TRANSPORTATION/COUNTY ENGINEER

PASSED: *OCTOBER 28* _____ 20
Chris H. Hesse
DISTRICT 1 ENGINEER OF LOCAL ROADS & STREETS

RELEASING FOR BID
BASED ON LIMITED
REVIEW: *OCTOBER 29,* _____ 2009
Diana M. O'Keefe
DEPUTY DIRECTOR OF HIGHWAYS, REGION 1 ENGINEER

**PRINTED BY THE AUTHORITY
OF THE STATE OF ILLINOIS**

GHA #4135.800

ASSOCIATE FIELD ENGINEER: KEVIN STALLWORTH (847) 706-4169

CONTRACT NO. 63344

J.U.L.I.E.
JOINT UTILITY LOCATION INFORMATION FOR EXCAVATION CALL 811
811
Know what's below.
Call before you dig.

EXISTING UTILITIES: WHEN THE PLANS OR SPECIAL PROVISIONS INCLUDE INFORMATION PERTAINING TO THE LOCATION OF UNDERGROUND UTILITY FACILITIES, SUCH INFORMATION REPRESENTS ONLY THE OPINION OF THE ENGINEER AND IS NOT A GUARANTEE OF THE LOCATION OF SUCH UTILITIES AND IS ONLY INCLUDED FOR THE CONVENIENCE OF THE BIDDER. THE ENGINEER AND OWNER ASSUME NO RESPONSIBILITY WHATSOEVER IN RESPECT TO THE SUFFICIENCY OR ACCURACY OF THE INFORMATION SHOWN ON THE PLANS RELATIVE TO THE LOCATION OF UNDERGROUND UTILITY FACILITIES OR THE MANNER IN WHICH THEY ARE TO BE REMOVED OR ADJUSTED. IT SHALL BE THE CONTRACTOR'S RESPONSIBILITY TO DETERMINE THE ACTUAL LOCATION OF ALL SUCH FACILITIES. HE SHALL ALSO OBTAIN FROM THE RESPECTIVE UTILITY COMPANIES, DETAILED INFORMATION RELATIVE TO THE LOCATION OF THEIR FACILITIES AND THE WORKING SCHEDULES OF THE UTILITY COMPANIES FOR REMOVING OR ADJUSTING THEM.

CONTRACTOR IS RESPONSIBLE FOR CONTACTING J.U.L.I.E. AT 1-800-892-0123 AND MUST ACQUIRE A DIG NUMBER A MINIMUM OF 72 HOURS PRIOR TO ANY WORK BEING DONE.

FILE NAME = 4135.315-IR1.dwg	USER NAME = GHA	DESIGN'D - JRD	REVISED - 9/15/09 (LCDOT)	<p>Lake County Division of Transportation</p>	TITLE SHEET	F.A.P. RTE 2730	SECTION 08-00259-00-TL	COUNTY LAKE	TOTAL SHEETS 86	SHEET NO. 1	
			REVISED - 9/25/09 (IDOT)		SCALE: NONE	SHEET NO. 1 OF 86 SHEETS	STA. TO STA.				
			REVISED - 10/19/09 (LCDOT)								
										ILLINOIS FED. AID PROJECT CONTRACT # 63344	