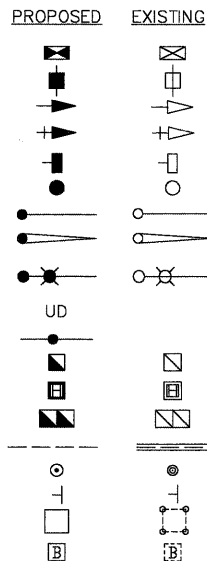
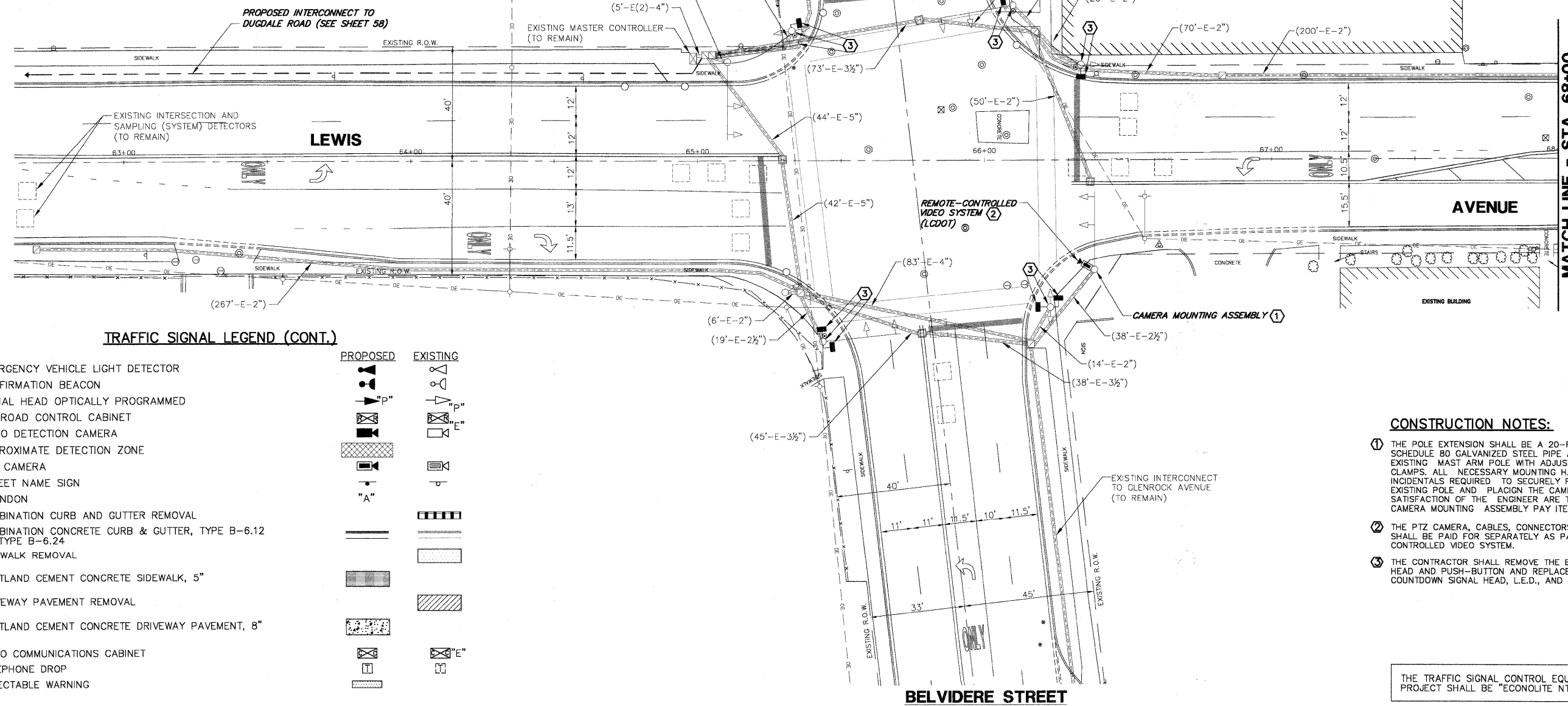
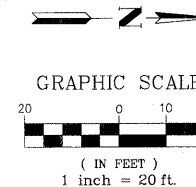


TRAFFIC SIGNAL LEGEND

- CONTROLLER
- SERVICE INSTALLATION
- SIGNAL HEAD
- SIGNAL HEAD WITH BACKPLATE
- SIGNAL HEAD, PEDESTRIAN
- SIGNAL POST
- MAST ARM ASSEMBLY AND POLE, STEEL
- MAST ARM ASSEMBLY AND POLE, ALUMINUM
- COMBINATION MAST ARM ASSEMBLY AND POLE, STEEL, WITH LUMINAIRE
- UNIT DUCT
- CONDUIT SPLICE
- HANDHOLE
- HEAVY DUTY HANDHOLE
- DOUBLE HANDHOLE
- G.S. CONDUIT IN GROUND (CIG)
- PEDESTRIAN PUSHBUTTON DETECTOR
- PEDESTRIAN PUSHBUTTON SIGN
- DETECTOR LOOP
- UNINTERRUPTIBLE POWER SUPPLY

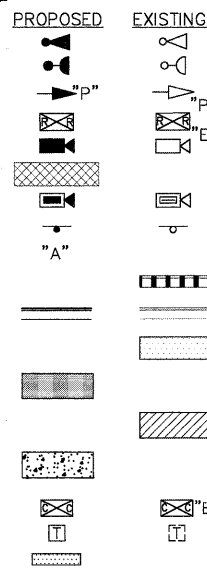


BELVIDERE STREET



TRAFFIC SIGNAL LEGEND (CONT.)

- EMERGENCY VEHICLE LIGHT DETECTOR
- CONFIRMATION BEACON
- SIGNAL HEAD OPTICALLY PROGRAMMED
- RAILROAD CONTROL CABINET
- VIDEO DETECTION CAMERA
- APPROXIMATE DETECTION ZONE
- PTZ CAMERA
- STREET NAME SIGN
- ABANDON
- COMBINATION CURB AND GUTTER REMOVAL
- COMBINATION CONCRETE CURB & GUTTER, TYPE B-6.12 OR TYPE B-6.24
- SIDEWALK REMOVAL
- PORTLAND CEMENT CONCRETE SIDEWALK, 5"
- DRIVEWAY PAVEMENT REMOVAL
- PORTLAND CEMENT CONCRETE DRIVEWAY PAVEMENT, 8"
- VIDEO COMMUNICATIONS CABINET
- TELEPHONE DROP
- DETECTABLE WARNING



CONSTRUCTION NOTES:

- ① THE POLE EXTENSION SHALL BE A 20-FOOT LONG, 4-INCH DIAMETER, SCHEDULE 80 GALVANIZED STEEL PIPE AND FASTENED TO THE EXISTING MAST ARM POLE WITH ADJUSTABLE, GALVANIZED STEEL CLAMPS. ALL NECESSARY MOUNTING HARDWARE, LABOR AND INCIDENTALS REQUIRED TO SECURELY FASTEN THE ASSEMBLY TO THE EXISTING POLE AND PLACE THE CAMERA IN OPERATION TO THE SATISFACTION OF THE ENGINEER ARE TO BE INCLUDED WITH THE CAMERA MOUNTING ASSEMBLY PAY ITEM.
- ② THE PTZ CAMERA, CABLES, CONNECTORS AND RELATED EQUIPMENT SHALL BE PAID FOR SEPARATELY AS PART OF THE REMOTE-CONTROLLED VIDEO SYSTEM.
- ③ THE CONTRACTOR SHALL REMOVE THE EXISTING PEDESTRIAN SIGNAL HEAD AND PUSH-BUTTON AND REPLACE WITH NEW PEDESTRIAN COUNTDOWN SIGNAL HEAD, L.E.D., AND PEDESTRIAN PUSH-BUTTON.

THE TRAFFIC SIGNAL CONTROL EQUIPMENT FOR THIS PROJECT SHALL BE "ECONOLITE NTCIP" COMPLIANT.

GHA #4135.800

FILE NAME = 4135.315-TR1.dwg	USER NAME = GHA	DESIGNED - JRD	REVISED - 9/15/09 (LCDOT)		TRAFFIC SIGNAL MODERNIZATION PLAN LEWIS AVENUE AT BELVIDERE ROAD			F.A.P. RTE. 2730	SECTION 08-00259-00-TL	COUNTY LAKE	TOTAL SHEETS 86	SHEET NO. 16
PLOT SCALE = 1" = .08'	CHECKED - DPB	REVISED - 9/25/09 (IDOT)	REVISED - 10/19/09 (LCDOT)					SCALE 1"=20'	SHEET NO. 16 OF 86 SHEETS	STA. TO STA.	CONTRACT # 63344	ILLINOIS FED. AID PROJECT
PLOT DATE = 10/19/2009	DATE - 10/19/09	REVISED -	REVISED -									