

STATE OF ILLINOIS

DEPARTMENT OF TRANSPORTATION

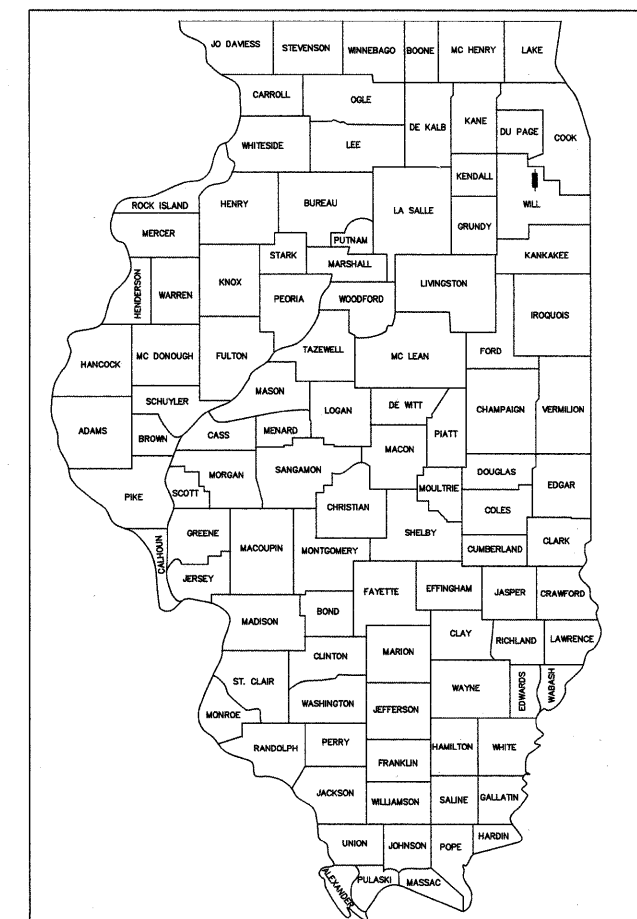
DIVISION OF HIGHWAYS

PLANS FOR PROPOSED FEDERAL AID HIGHWAY

163rd STREET (FAU 290) & BRUCE ROAD (FAU 293)
 2009 FEDERAL STIMULUS ARRA FUND RESURFACING PROJECT
 163rd STREET (FAU 290), FARRELL ROAD (FAU 366) TO I-355
 & BRUCE ROAD (FAU 293), FARRELL ROAD (FAU 366) TO GOUGAR ROAD (FAU 367)
 SECTION: 09-00065-00-RS
 PROJECT: ARA-9003(408)
 CITY OF LOCKPORT
 WILL COUNTY
 JOB NO.: C-91-799-09

F.A.U. RTE.	SECTION	COUNTY	TOTAL SHEETS	SHEET NO.
290/293	09-00065-00-RS	WILL	20	1

CONTRACT NO. 63352



LOCATION OF SECTION INDICATED THUS: - [rectangle] -

STATE OF ILLINOIS DEPARTMENT OF TRANSPORTATION
 DIVISION OF HIGHWAYS

Approved: Dev Trivedi
 Mayor, City of Lockport

Passed: OCTOBER 27, 2009
Chet Hestert
 District 1 Engineer of Local Roads & Streets

Releasing for Bid Based on Limited Review: OCTOBER 29, 2009
Diana M. O'Keefe
 Deputy Director of Highways, Region 1 Engineer 92



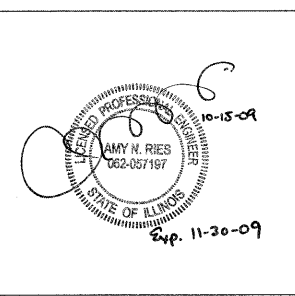
The City of Lockport
 Engineering Department
 17112 S. Prime Blvd., Lockport, IL 60441
 815-838-0549 815-838-6580 (fax)

PRINTED BY THE AUTHORITY OF THE STATE OF ILLINOIS

FOR INDEX OF SHEETS, SEE SHEET NO. 2



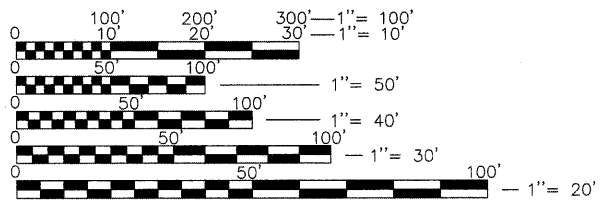
PROJECT LOCATED IN CITY OF LOCKPORT



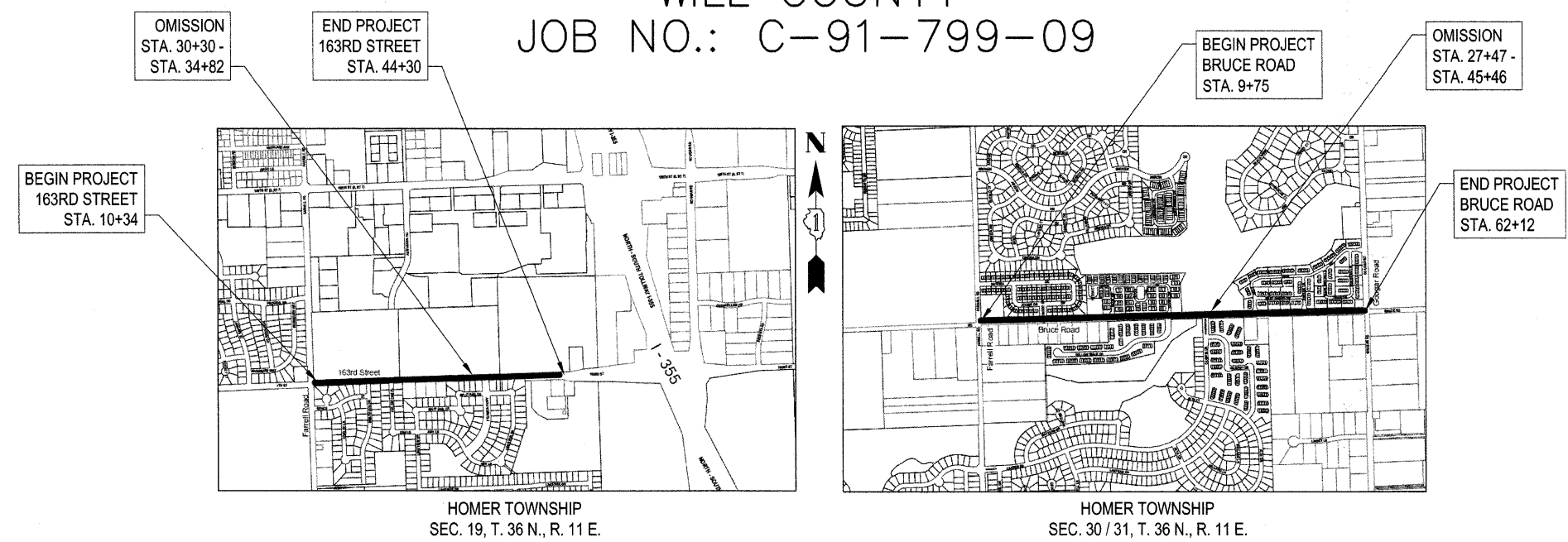
Amy N. Ries, P.E.
 Date: 10-15-2009
 License no.: 062-057197
 Expiration Date: 11-30-2009

DESIGN DESIGNATION
 163RD STREET : COLLECTOR
 POSTED SPEED: 30 MPH
 DESIGN SPEED: 35 MPH
 ADT - 8000 (2030)

DESIGN DESIGNATION
 BRUCE ROAD : COLLECTOR
 POSTED SPEED: 35 MPH
 DESIGN SPEED: 40 MPH
 ADT - 15000 (2030)



FULL SIZE PLANS HAVE BEEN PREPARED USING STANDARD ENGINEERING SCALES. REDUCED SIZED PLANS WILL NOT CONFORM TO STANDARD SCALES. IN MAKING MEASUREMENTS ON REDUCED PLANS, THE ABOVE SCALES MAY BE USED.



163RD STREET (FAU 290)
 GROSS LENGTH OF PROJECT = 3396' (0.643 MILES)
 NET LENGTH OF PROJECT = 2944' (0.558 MILES)

BRUCE ROAD (FAU 293)
 GROSS LENGTH OF PROJECT = 5237' (0.99 MILES)
 NET LENGTH OF PROJECT = 3438' (0.65 MILES)
 NOT TO SCALE

FIELD ENGINEER: MELCHOR MANGOBA (847) 705-4408