

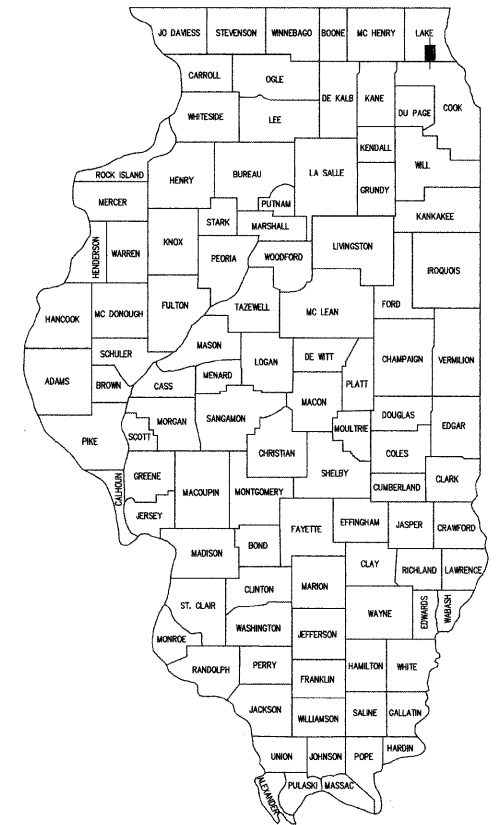
F.A.U. RTE.	SECTION	COUNTY	TOTAL SHEETS	SHEET NO.
2715	09-00011-00-RS	LAKE	10	1
CONTRACT NO. 63357				
ILLINOIS FED. AID PROJECT				

**STATE OF ILLINOIS
DEPARTMENT OF TRANSPORTATION
DIVISION OF HIGHWAYS**

PLANS FOR PROPOSED FEDERAL AID HIGHWAY

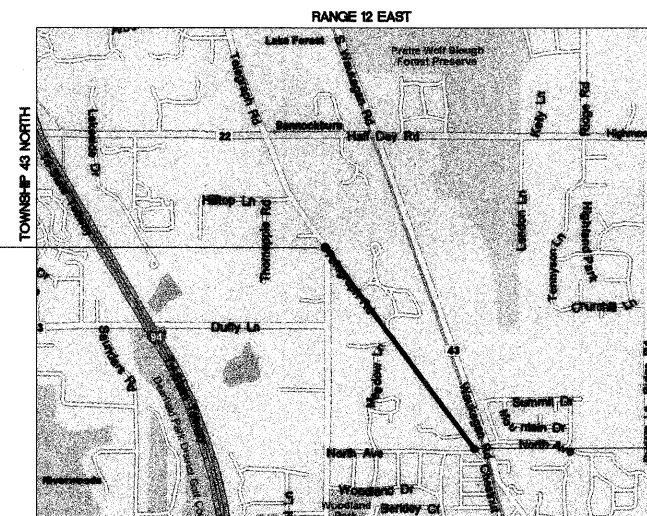
**FAU 2715/ TELEGRAPH ROAD
WILMOT ROAD TO NORTH AVENUE
SECTION: 09-00011-00-RS
JOB NO. C-91-887-09
PROJECT NO. ARA-9003(454)
VILLAGE OF BANNOCKBURN, ILLINOIS
LAKE COUNTY**

LOCATION MAP
(NOT TO SCALE)



LOCATION OF SECTION INDICATED THUS: [Black Rectangle]

- INDEX OF SHEETS**
1. COVER SHEET, INDEX OF SHEETS, LIST OF STATE STANDARDS
 2. GENERAL NOTES & SUMMARY OF QUANTITIES
 3. TYPICAL SECTIONS
 - 4.-5. PROPOSED CONDITIONS - PLAN VIEW
 - 6.-10. CONSTRUCTION DETAILS

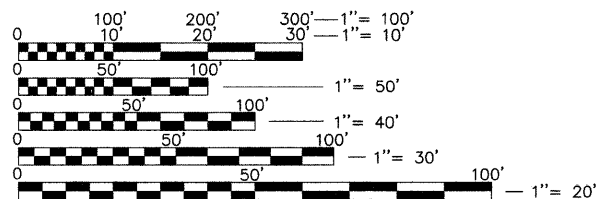


TELEGRAPH ROAD
PROJECT ENDS
STA. 53+65.5

TELEGRAPH ROAD
PROJECT BEGINS
STA. 0+29

PROJECT INFORMATION
LENGTH OF PROJECT = 5337 FT (1.01 MI)
ADT = 1250 VPD (2007)
POSTED SPEED LIMIT = 25 MPH
DESIGN SPEED LIMIT = 30 MPH
ROAD CLASSIFICATION = URBAN COLLECTOR

FULL SIZE PLANS HAVE BEEN PREPARED USING STANDARD ENGINEERING SCALES. REDUCED SIZED PLANS WILL NOT CONFORM TO STANDARD SCALES. IN MAKING MEASUREMENTS ON REDUCED PLANS, THE BELOW SCALES MAY BE USED.



J.U.L.I.E.

JOINT
UTILITY
LOCATION
INFORMATION FOR
EXCAVATION
CALL 811



Know what's below.
Call before you dig.

EXISTING UTILITIES: WHEN THE PLANS OR SPECIAL PROVISIONS INCLUDE INFORMATION PERTAINING TO THE LOCATION OF UNDERGROUND UTILITY FACILITIES, SUCH INFORMATION REPRESENTS ONLY THE OPINION OF THE ENGINEER AS TO THE LOCATION OF SUCH UTILITIES AND IS ONLY INCLUDED FOR THE CONVENIENCE OF THE BIDDER. THE ENGINEER AND OWNER ASSUME NO RESPONSIBILITY WHATEVER IN RESPECT TO THE SUFFICIENCY OR ACCURACY OF THE INFORMATION SHOWN ON THE PLANS RELATIVE TO THE LOCATION OF UNDERGROUND UTILITY FACILITIES OR THE MANNER IN WHICH THEY ARE TO BE REMOVED OR ADJUSTED. IT SHALL BE THE CONTRACTOR'S RESPONSIBILITY TO DETERMINE THE ACTUAL LOCATION OF ALL SUCH FACILITIES. HE SHALL ALSO OBTAIN FROM THE RESPECTIVE UTILITY COMPANIES, DETAILED INFORMATION RELATIVE TO THE LOCATION OF THEIR FACILITIES AND THE WORKING SCHEDULES OF THE UTILITY COMPANIES FOR REMOVING OR ADJUSTING THEM.

CONTRACTOR IS RESPONSIBLE FOR CONTACTING J.U.L.I.E. AT 1-800-892-0123 AND MUST ACQUIRE A DIG NUMBER A MINIMUM OF 72 HOURS PRIOR TO ANY WORK BEING DONE.

NOTE:
THE CONTRACTOR IS SOLELY RESPONSIBLE
FOR JOBSITE SAFETY.

CONTRACT NO. 63357

FILE NAME =
8101.000-TELEGRAPH-PR1.dwg

STATE OF ILLINOIS DEPARTMENT OF TRANSPORTATION DIVISION OF HIGHWAYS	
APPROVED: <u>October 14</u> , 2009	[Signature]
VILLAGE OF BANNOCKBURN	
PASSED: <u>OCTOBER 20</u> , 2009	[Signature]
DISTRICT ONE ENGINEER OF LOCAL ROADS AND STREETS	
RELEASING FOR BID BASED ON LIMITED REVIEW: <u>OCTOBER 29</u> , 2009	[Signature]
DEPUTY DIRECTOR OF HIGHWAYS, REGION ONE ENGINEER	

**GHA GEWALT HAMILTON
ASSOCIATES, INC.**

850 Forest Edge Drive ■ Vernon Hills, IL 60061
Phone: 847-478-9700 Fax: 847-478-9701

PROFESSIONAL ENGINEER'S SIGNATURE & SEAL

[Signature]

LEO X. MORAND
EXPIRES: 11-30-09

**PRINTED BY THE AUTHORITY
OF THE STATE OF ILLINOIS**

ASSOCIATE FIELD ENGINEER: KEVIN STALLWORTH (847) 705-4169