

DATE	
BY	
PLAN	
SUBMITTED	
PLOTTED	
GRADES CHECKED	
ALIGNMENT CHECKED	
STRUCTURE NOTATIONS CHECKED	
NOTE BOOK NO.	
CADD FILE NAME	

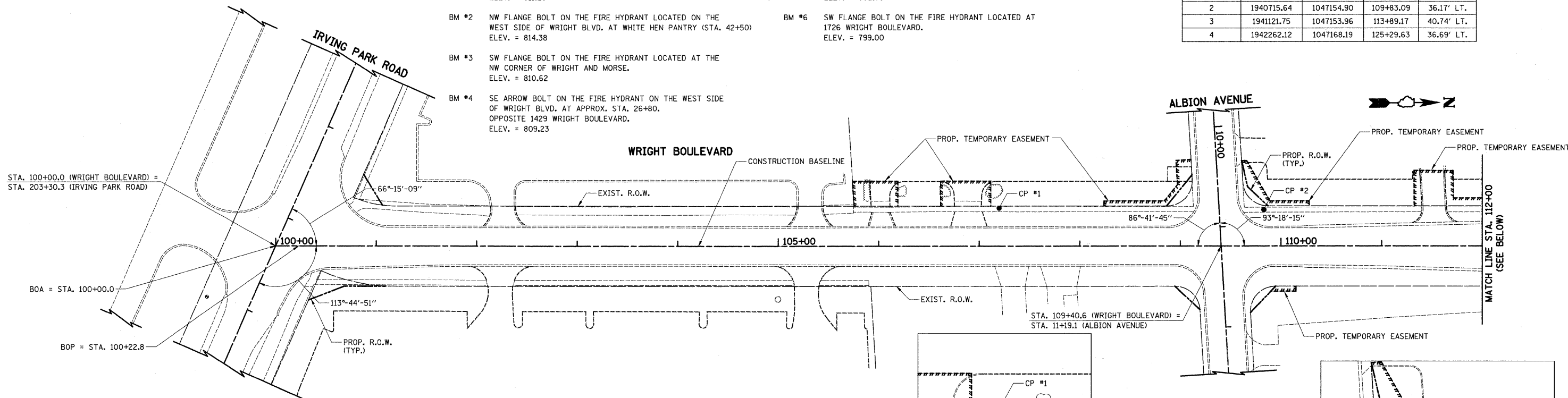
DATE	
BY	
PROFILE	
SUBMITTED	
PLOTTED	
GRADES CHECKED	
ALIGNMENT CHECKED	
STRUCTURE NOTATIONS CHECKED	
NOTE BOOK NO.	
CADD FILE NAME	

BENCHMARKS

- BM #1 SW FLANGE BOLT ON THE FIRE HYDRANT AT THE SE CORNER OF ESTES AND WRIGHT BLVD. ELEV. = 811.29
- BM #2 NW FLANGE BOLT ON THE FIRE HYDRANT LOCATED ON THE WEST SIDE OF WRIGHT BLVD. AT WHITE HEN PANTRY (STA. 42+50) ELEV. = 814.38
- BM #3 SW FLANGE BOLT ON THE FIRE HYDRANT LOCATED AT THE NW CORNER OF WRIGHT AND MORSE. ELEV. = 810.62
- BM #4 SE ARROW BOLT ON THE FIRE HYDRANT ON THE WEST SIDE OF WRIGHT BLVD. AT APPROX. STA. 26+80. OPPOSITE 1429 WRIGHT BOULEVARD. ELEV. = 809.23
- BM #5 NW ARROW BOLT ON THE FIRE HYDRANT ON THE SOUTH SIDE OF THE RR TRACKS AT 1670 WRIGHT BOULEVARD. ELEV. = 802.80
- BM #6 SW FLANGE BOLT ON THE FIRE HYDRANT LOCATED AT 1726 WRIGHT BOULEVARD. ELEV. = 799.00

CONTROL POINTS

POINT NO.	NORTHING	EASTING	STATION	OFFSET
1	1940452.42	1047150.87	107+19.84	37.85' LT.
2	1940715.64	1047154.90	109+83.09	36.17' LT.
3	1941121.75	1047153.96	113+89.17	40.74' LT.
4	1942262.12	1047168.19	125+29.63	36.69' LT.



STATION VSQ 1

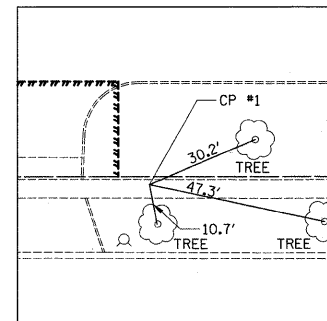
- A GPS MONUMENT LOCATED AT ANTHONY GALLO FIRE STATION AT THE NE CORNER OF LUNT AND WRIGHT BLVD. ELEV. = 812.48
- THREE POINT TIES ARE PROVIDED ONLY TO FIND GENERAL LOCATION OF CONTROL POINT.
- COORDINATES AND DISTANCES ARE GROUND.
- BASIS OF BEARINGS IS THE ILLINOIS STATE PLANE COORDINATE SYSTEM EAST ZONE (NAD83).

ROADWAY ALIGNMENT DATA

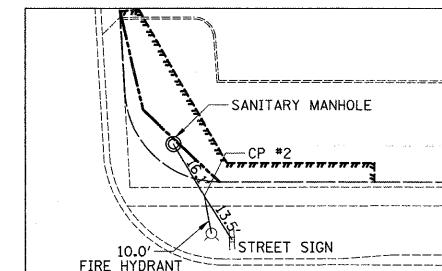
POINT NO.	STATION	NORTHING	EASTING
BOA	100+00.00	1939732.27	1047182.29
BOP	100+22.80	1939755.07	1047182.49
EOP	145+54.60	1943082.69	1047664.84

NOTES:

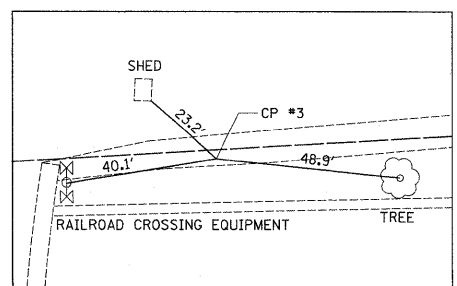
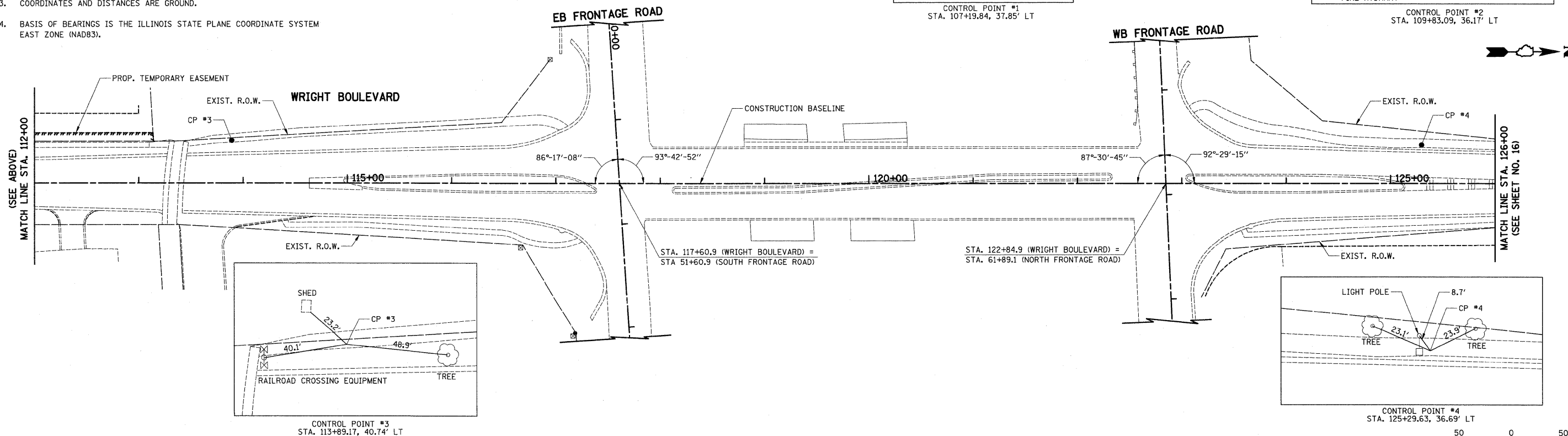
- BOA = BEGINNING OF ALIGNMENT
- BOP = BEGINNING OF PROJECT
- EOP = END OF PROJECT



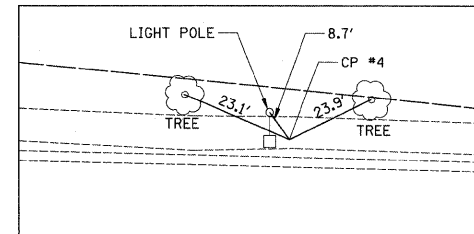
CONTROL POINT #1
STA. 107+19.84, 37.85' LT



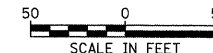
CONTROL POINT #2
STA. 109+83.09, 36.17' LT



CONTROL POINT #3
STA. 113+89.17, 40.74' LT



CONTROL POINT #4
STA. 125+29.63, 36.69' LT



FILE NAME = J:\2215\oad\sheets\2215_Alg & Ties 01.dgn

USER NAME = jet
DESIGNED - JAT
DRAWN - CDC
CHECKED - DJK
DATE = 10-16-09

REVISED -
REVISED -
REVISED -
REVISED -

**STATE OF ILLINOIS
DEPARTMENT OF TRANSPORTATION**

**WRIGHT BOULEVARD
ALIGNMENT AND BENCHMARKS**

SCALE: 1" = 50' SHEET NO. 1 OF 2 SHEETS STA. 100+00 TO STA. 126+00

F.A.U. RTE.	SECTION	COUNTY	TOTAL SHEETS	SHEET NO.
1351	06-00090-00-PV	COOK	137	15
CONTRACT NO. 63378				
FED. ROAD DIST. NO. 1 ILLINOIS FED. AID PROJECT ARA-M-8003 (809)				