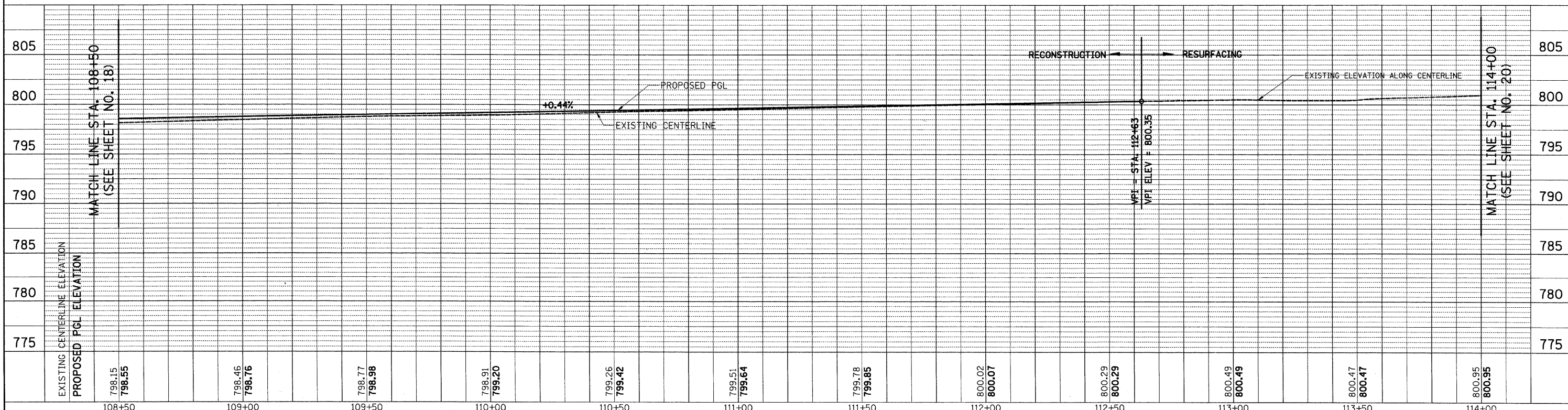
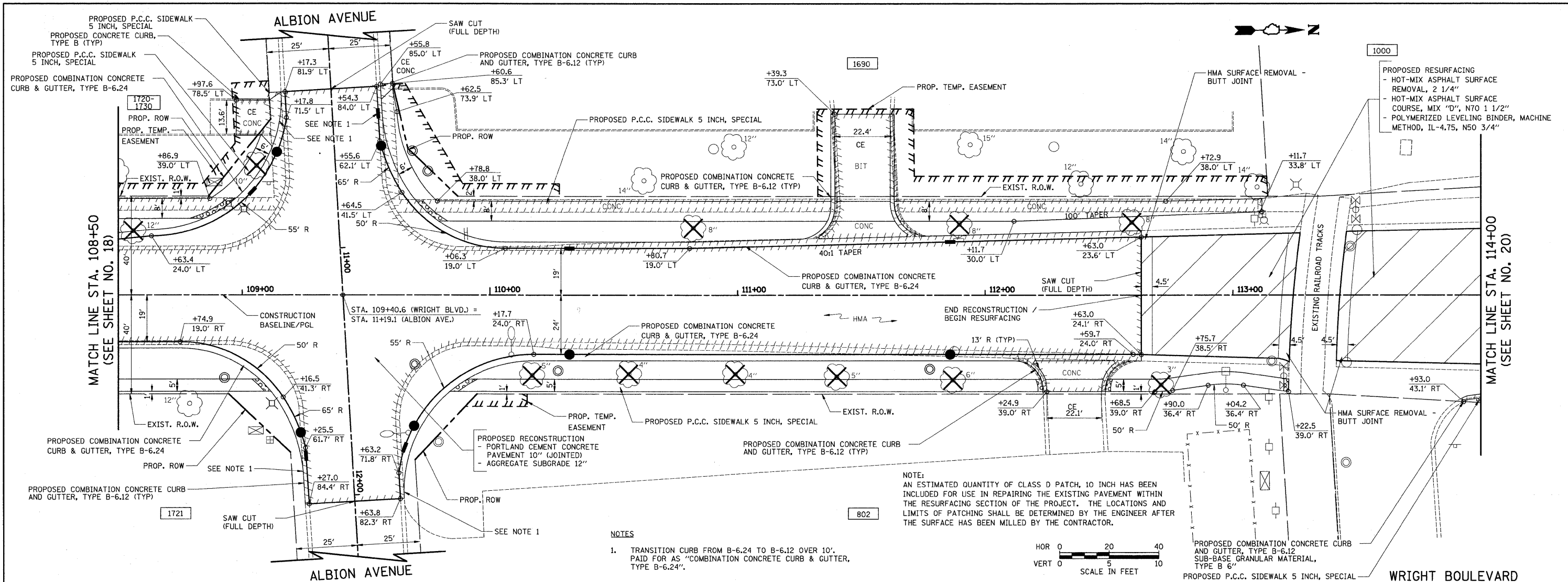


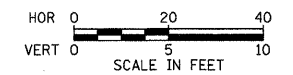
PLAN	SURVEYED	DATE
	PLOTTED	
	CHECKED	
	ALIGNED	
	FILED	
	NO.	

PROFILE	SURVEYED	DATE
	PLOTTED	
	CHECKED	
	STRUCTURE	
	NOTATIONS	
	NO.	



- NOTES**
1. TRANSITION CURB FROM B-6.24 TO B-6.12 OVER 10'. PAID FOR AS "COMBINATION CONCRETE CURB & GUTTER, TYPE B-6.24".

NOTE:
AN ESTIMATED QUANTITY OF CLASS D PATCH, 10 INCH HAS BEEN INCLUDED FOR USE IN REPAIRING THE EXISTING PAVEMENT WITHIN THE RESURFACING SECTION OF THE PROJECT. THE LOCATIONS AND LIMITS OF PATCHING SHALL BE DETERMINED BY THE ENGINEER AFTER THE SURFACE HAS BEEN MILLED BY THE CONTRACTOR.



FILE NAME = ...\\cad\sheets\2215_P&P_03.dgn	USER NAME = kpk	DESIGNED - JAT	REVISED -	STATE OF ILLINOIS DEPARTMENT OF TRANSPORTATION	WRIGHT BOULEVARD PLAN & PROFILE	F.A.U. RTE. 1351	SECTION 06-00090-00-PV	COUNTY COOK	TOTAL SHEETS 137	SHEET NO. 19	
PLOT SCALE = 20,0000' / IN.	PLOT DATE = 10/29/2009	DRAWN - JAT	REVISED -			SCALE: 1" = 20'			SHEET NO. 3 OF 10 SHEETS		
CHECKED - DJK	DATE - 10-16-09	REVISOR -	REVISOR -			STA. 108+50 TO STA. 114+00			CONTRACT NO. 63378		
						FED. ROAD DIST. NO. 1 ILLINOIS FED. AID PROJECT ARA-N-8003 (809)					