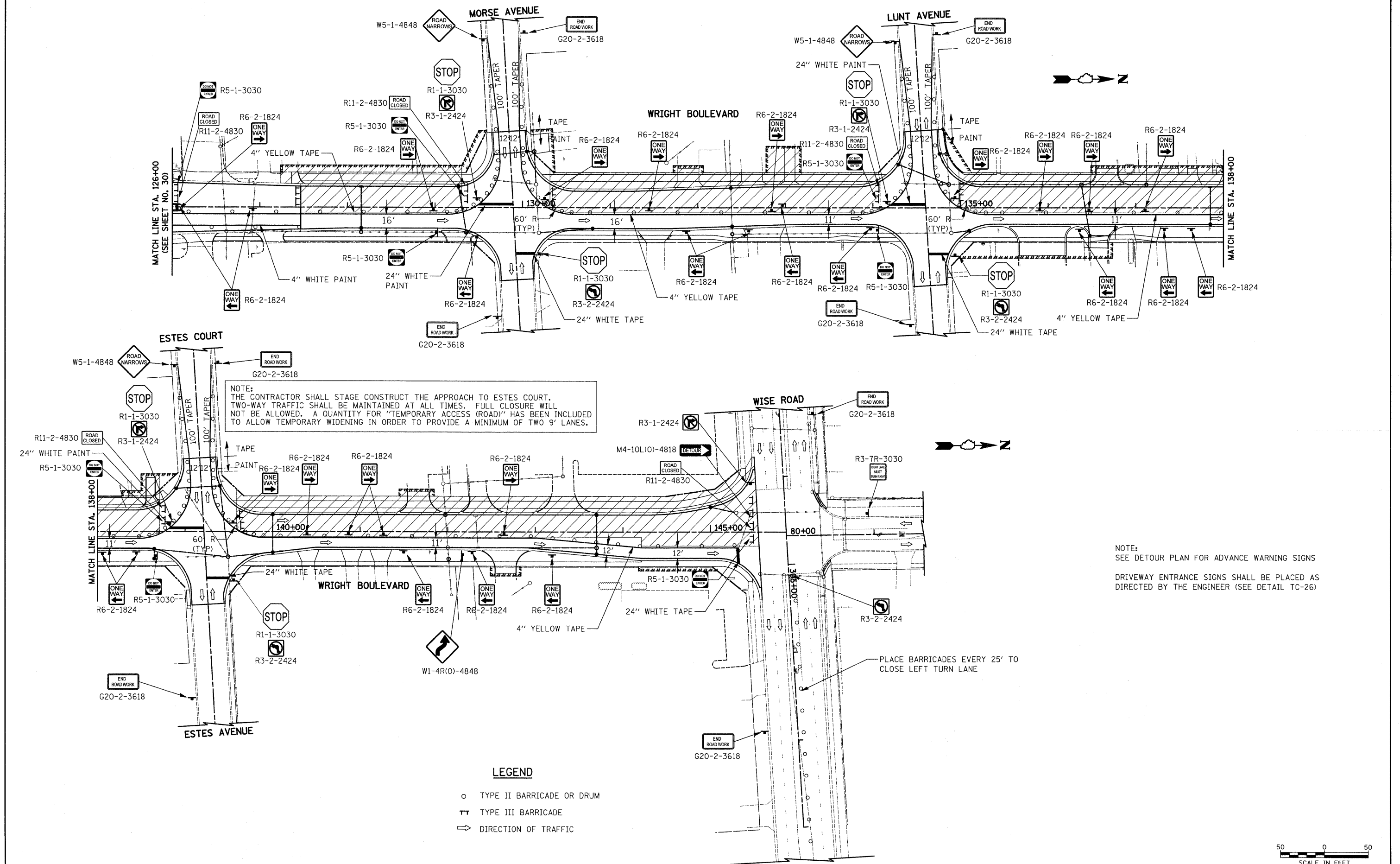


PLAN	SURVEYED	DATE
	PLOTTED	
	CHECKED	
	ATTEMPTED	
	FILED	
	NO.	

PROFILE	SURVEYED	DATE
	GRADES CHECKED	
	STRUCTURE NOTATIONS	
	NO.	

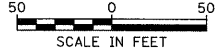


NOTE:
 THE CONTRACTOR SHALL STAGE CONSTRUCT THE APPROACH TO ESTES COURT.
 TWO-WAY TRAFFIC SHALL BE MAINTAINED AT ALL TIMES. FULL CLOSURE WILL
 NOT BE ALLOWED. A QUANTITY FOR "TEMPORARY ACCESS (ROAD)" HAS BEEN INCLUDED
 TO ALLOW TEMPORARY WIDENING IN ORDER TO PROVIDE A MINIMUM OF TWO 9' LANES.

NOTE:
 SEE DETOUR PLAN FOR ADVANCE WARNING SIGNS
 DRIVEWAY ENTRANCE SIGNS SHALL BE PLACED AS
 DIRECTED BY THE ENGINEER (SEE DETAIL TC-26)

LEGEND

- TYPE II BARRICADE OR DRUM
- ⊥ TYPE III BARRICADE
- ➔ DIRECTION OF TRAFFIC



FILE NAME = J:\2215\oad\shhets\2215_MOT_2_02.dgn

USER NAME = jat

DESIGNED - DJK
 DRAWN - DJK

REVISED -
 REVISED -
 REVISED -

PLOT SCALE = 50.0000' / IN.
 PLOT DATE = 10/15/2009

CHECKED - KRK
 DATE - 10-16-09

REVISED -
 REVISED -
 REVISED -

**STATE OF ILLINOIS
 DEPARTMENT OF TRANSPORTATION**

**WRIGHT BOULEVARD
 MAINTENANCE OF TRAFFIC - STAGE 2**

SHEET NO. 5 OF 5 SHEETS

F.A.U. RTE.	SECTION	COUNTY	TOTAL SHEETS	SHEET NO.
1351	06-00090-00-PV	COOK	137	31
CONTRACT NO. 63378				
FED. ROAD DIST. NO. 1 ILLINOIS FED. AID PROJECT ARA-M-8003 (809)				