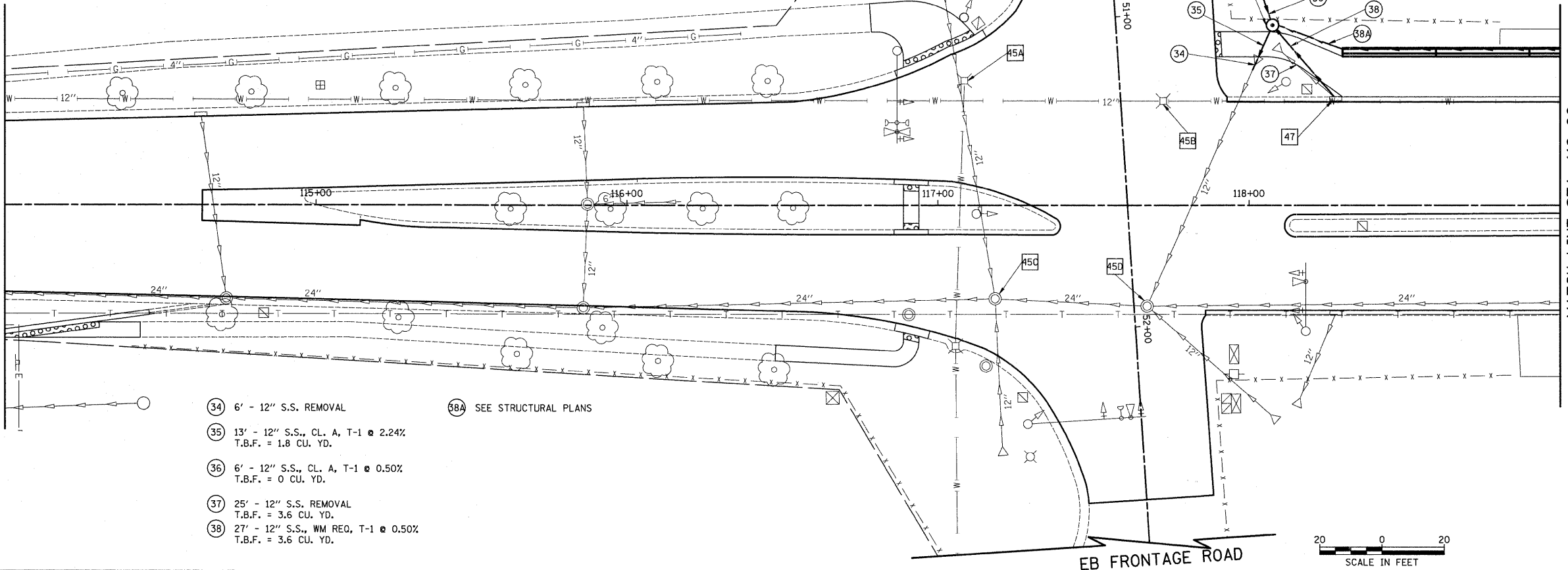


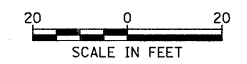
- 45 STA. 118+07.6, 58.0' LT  
MH T-A, 5' DIA  
SPECIAL FRAME AND LID  
RIM = 801.50  
INV = 799.18 (12" W & SE)  
INV = 799.36 (12" NE)  
INV = 799.18 (4" N)
- 45A STA. 117+08.5, 40.2' LT  
FRAMES & LIDS TO BE  
ADJUSTED, SPECIAL  
EX RIM = 802.11  
PR RIM = 802.11
- 45C STA. 117+18.4, 30.0' RT  
FRAMES & LIDS TO BE  
ADJUSTED, SPECIAL  
EX RIM = 802.29  
PR RIM = 802.29
- 46 STA. 118+02.9, 71.7' LT  
PRECAST REINFORCED CONCRETE  
FLARED END SECTION, 12"  
RIM = 802.43  
INV = 799.21
- 45B STA. 117+72.4, 33.6' LT  
FRAMES & LIDS TO BE  
ADJUSTED, SPECIAL  
EX RIM = 802.20  
PR RIM = 802.20
- 45D STA. 117+67.2, 32.3' RT  
FRAMES & LIDS TO BE  
ADJUSTED, SPECIAL  
EX RIM = 802.12  
PR RIM = 802.12
- 47 STA. 118+27.9, 34.4' LT  
EXISTING INLET  
RIM = 802.43  
INV = 799.50 (12" SW)

MATCH LINE STA. 114+00  
(SEE SHEET NO. 38)

MATCH LINE STA. 119+00  
(SEE SHEET NO. 40)

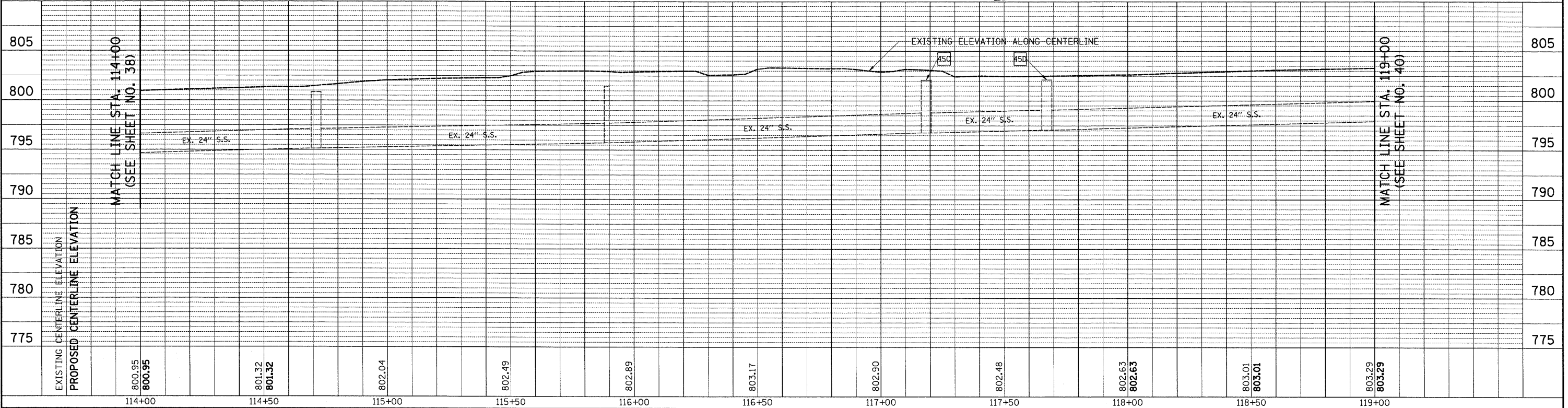


- 34 6' - 12" S.S. REMOVAL
- 35 13' - 12" S.S., CL. A, T-1 @ 2.24%  
T.B.F. = 1.8 CU. YD.
- 36 6' - 12" S.S., CL. A, T-1 @ 0.50%  
T.B.F. = 0 CU. YD.
- 37 25' - 12" S.S. REMOVAL  
T.B.F. = 3.6 CU. YD.
- 38 27' - 12" S.S., WM REQ, T-1 @ 0.50%  
T.B.F. = 3.6 CU. YD.
- 38A SEE STRUCTURAL PLANS



DATE	
BY	
REVISIONS	
NO.	
DESCRIPTION	
DATE	
BY	
PLANNING	
DESIGN	
CHECKING	
IN CHARGE	

DATE	
BY	
REVISIONS	
NO.	
DESCRIPTION	
DATE	
BY	
PROFILES	
GRADES	
STRUCTURE	
NOTATIONS	
CHKD	



FILE NAME = ...oad\sheets\2215_D&U_04.dgn	USER NAME = krk	DESIGNED - JAT	REVISED -	<b>STATE OF ILLINOIS DEPARTMENT OF TRANSPORTATION</b>	<b>WRIGHT BOULEVARD DRAINAGE &amp; UTILITIES</b>	F.A.U. RTE. 1351	SECTION 06-00090-00-PV	COUNTY COOK	TOTAL SHEETS 137	SHEET NO. 39
PLOT SCALE = 20,0000' / IN.	CHECKED - DJK	REVISED -	CONTRACT NO. 63378							
PLOT DATE = 10/29/2009	DATE - 10-16-09	REVISED -	SHEET NO. 4 OF 10 SHEETS							
			STA. 114+00 TO STA. 119+00							
						FED. ROAD DIST. NO. 1 ILLINOIS FED. AID PROJECT ARA-M-8003 (809)				