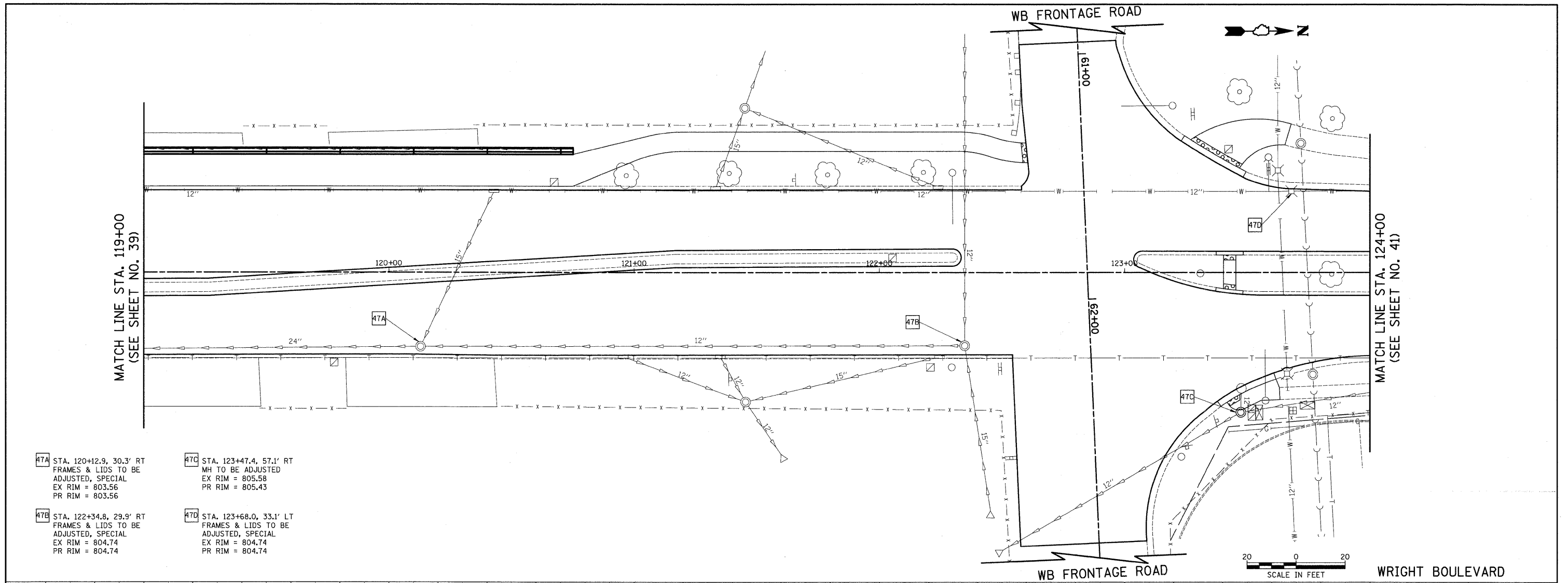
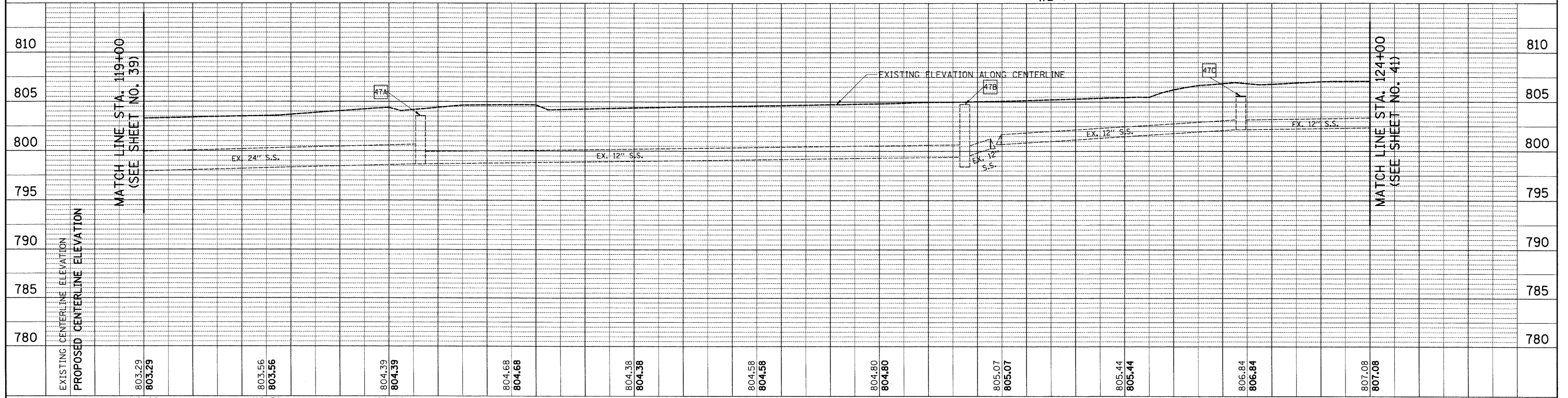


PLAN	SURVEYED	DATE
NOTE BOOK	PLOTTED	BY
NO.	CHECKED	
	AT	
	FILE NAME	

PROFILE	SURVEYED	DATE
NOTE BOOK	PLOTTED	BY
NO.	CHECKED	
	AT	
	FILE NAME	



- 47A STA. 120+12.9, 30.3' RT
FRAMES & LIDS TO BE
ADJUSTED, SPECIAL
EX RIM = 803.56
PR RIM = 803.56
- 47B STA. 122+34.8, 29.9' RT
FRAMES & LIDS TO BE
ADJUSTED, SPECIAL
EX RIM = 804.74
PR RIM = 804.74
- 47C STA. 123+47.4, 57.1' RT
MH TO BE ADJUSTED
EX RIM = 805.58
PR RIM = 805.43
- 47D STA. 123+68.0, 33.1' LT
FRAMES & LIDS TO BE
ADJUSTED, SPECIAL
EX RIM = 804.74
PR RIM = 804.74



FILE NAME = J:\2215\cad\sheets\2215.D&U 05.dgn	USER NAME = jst	DESIGNED - JAT	REVISED -	STATE OF ILLINOIS DEPARTMENT OF TRANSPORTATION	DRAWN - JAT	REVISED -	WRIGHT BOULEVARD DRAINAGE & UTILITIES	F.A.U. RTE. 1351	SECTION 06-00090-00-PV	COUNTY COOK	TOTAL SHEETS 137	SHEET NO. 40		
PLOT SCALE = 20.0000' / IN.		CHECKED - DJK			REVISED -			SHEET NO. 5 OF 10 SHEETS		STA. 119+00 TO STA. 124+00		CONTRACT NO. 63378		
PLOT DATE = 10/15/2009		DATE = 10-16-09			REVISED -			FED. ROAD DIST. NO. 1		ILLINOIS FED. AID PROJECT ARA-M-8003 (809)				