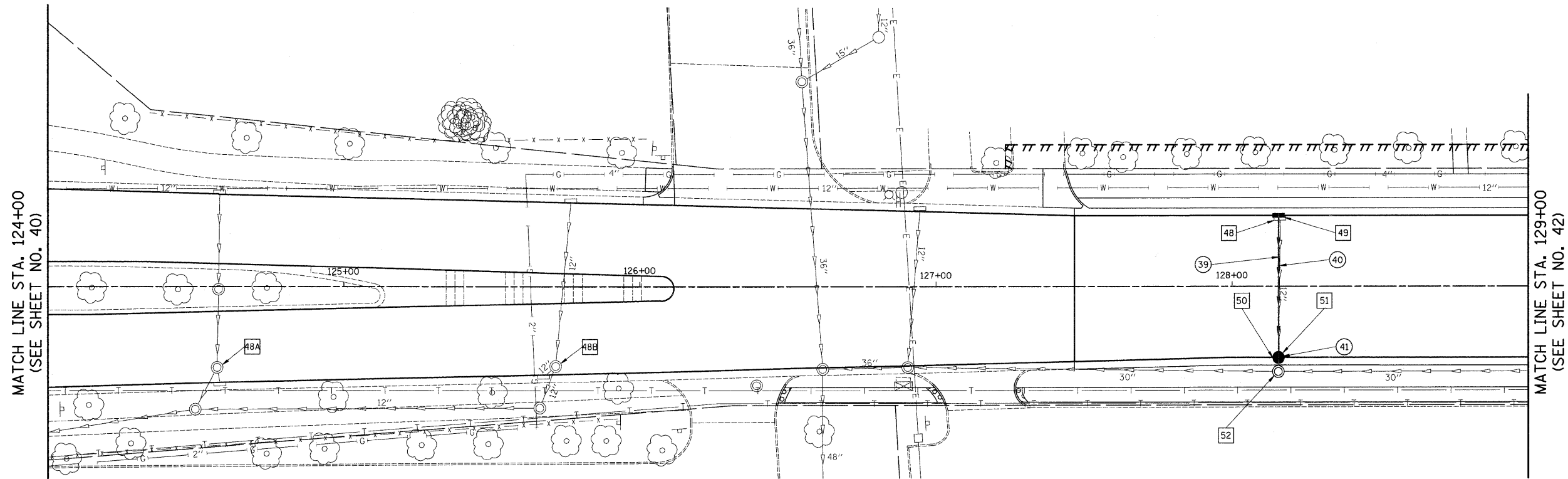
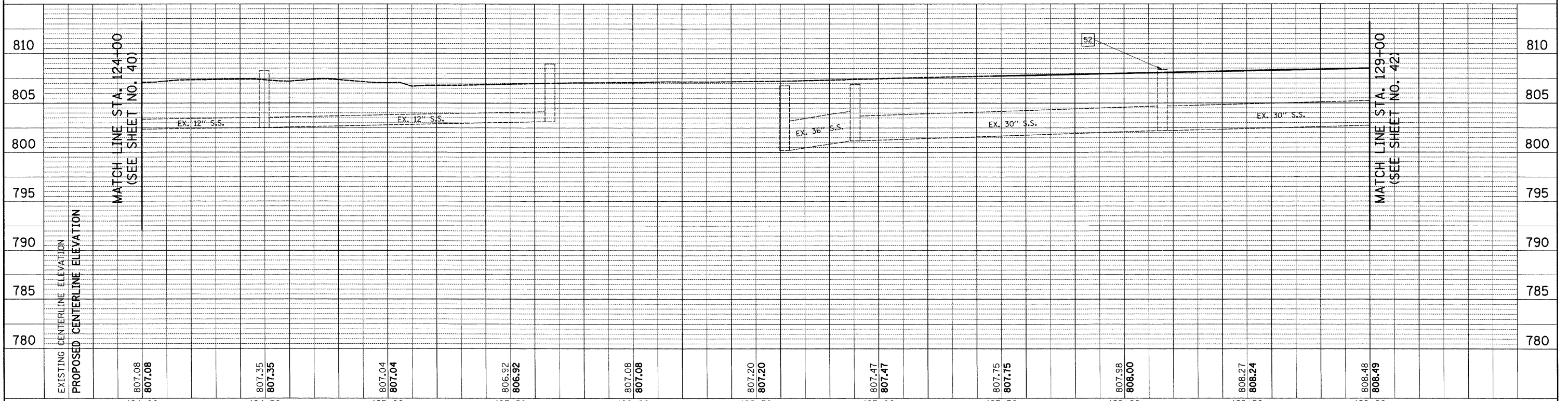
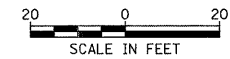


PLAN	SURVEYED	BY	DATE
	PLOTTED		
	GRADES CHECKED		
	STRUCTURE NOTATIONS CHECKED		
	NOTE BOOK NO.		
	CAD FILE NAME		

PROFILE	SURVEYED	BY	DATE
	PLOTTED		
	GRADES CHECKED		
	STRUCTURE NOTATIONS CHECKED		
	NOTE BOOK NO.		
	CAD FILE NAME		



- 48A STA. 124+57.2, 27.3' RT FRAMES & LIDS TO BE ADJUSTED, SPECIAL EX RIM = 805.93 PR RIM = 805.93
- 48B STA. 125+71.5, 26.8' RT FRAMES & LIDS TO BE ADJUSTED, SPECIAL EX RIM = 806.50 PR RIM = 806.50
- 48 STA. 128+16.2, 23' LT INLET TO BE REMOVED
- 49 STA. 128+15.7, 24.0' LT INLET T-A TYPE 24 F & G RIM = 807.59 INV = 804.14 (12" E)
- 50 STA. 128+15.7, 24.1' RT CB TO BE REMOVED
- 51 STA. 128+15.7, 24' RT CB T-A, 4' DIA TYPE 24 F & G RIM = 807.59 INV = 803.90 (12" W) INV = 803.84 (EX 12" E)
- 52 STA. 128+15.6, 28.8' RT MH TO BE ADJUSTED EX RIM = 808.36 PR RIM = 808.02 INV = 803.81 (EX 12" W) INV = 802.17 (EX 30" N & S)
- 39 48' - 12" S.S., CL. A, T-1 @ 0.5% T.B.F. = 6.4 CU. YD.
- 40 47' - 12" S.S. REMOVAL
- 41 4' - 12" S.S. REMOVAL



FILE NAME = J:\2215\cad\sheet\2215.D&U 06.dgn	USER NAME = jst	DESIGNED - JAT	REVISED -	STATE OF ILLINOIS	WRIGHT BOULEVARD	F.A.I. RTE. 1351	SECTION 06-0090-00-PV	COUNTY COOK	TOTAL SHEETS 137	SHEET NO. 41
PLOT SCALE = 28,0000' / IN.				DEPARTMENT OF TRANSPORTATION	DRAINAGE & UTILITIES	CONTRACT NO. 63378		FED. ROAD DIST. NO. 1 ILLINOIS FED. AID PROJECT ARA-M-8003 (809)		
PLOT DATE = 10/15/2009				SHEET NO. 6 OF 10 SHEETS		STA. 124+00 TO STA. 129+00				