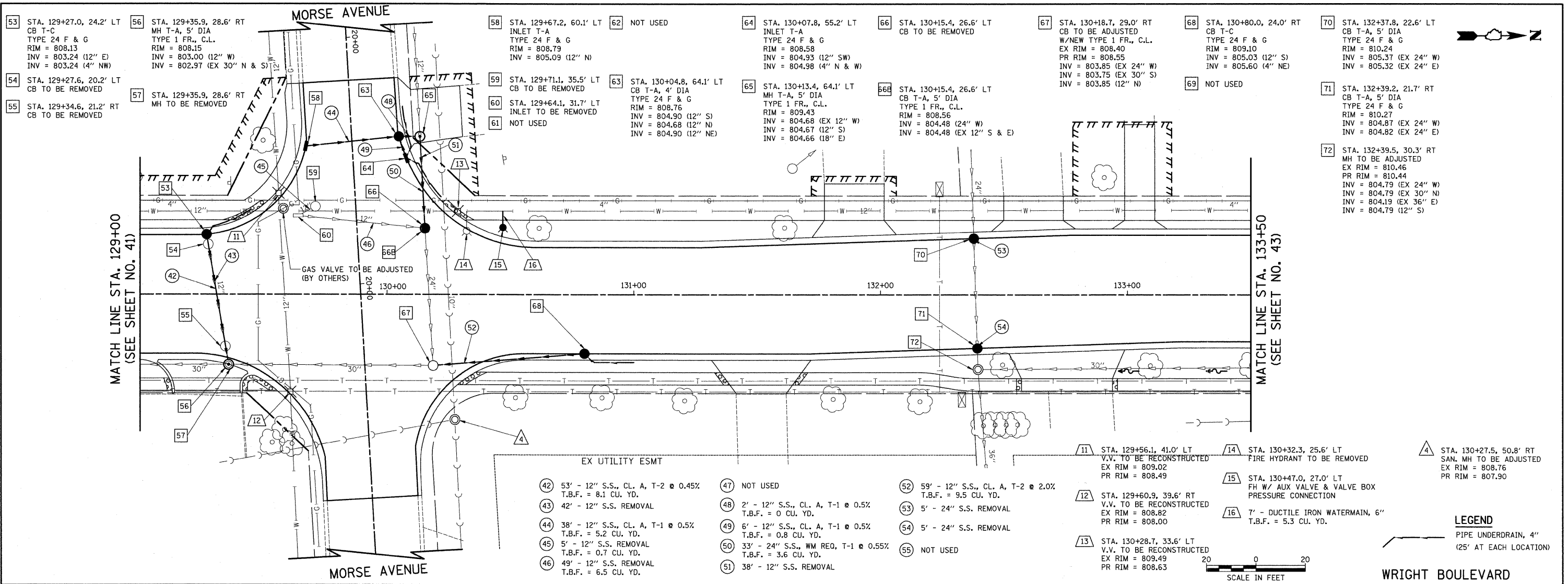


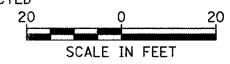
PLAN	REVIEWED	DATE
NOTE BOOK	ALIGNED	
NO.	CHECKED	
	FILE NAME	

PROFILE	REVIEWED	DATE
NOTE BOOK	GRADES CHECKED	
NO.	STRUCTURE	NOTATIONS CHKD

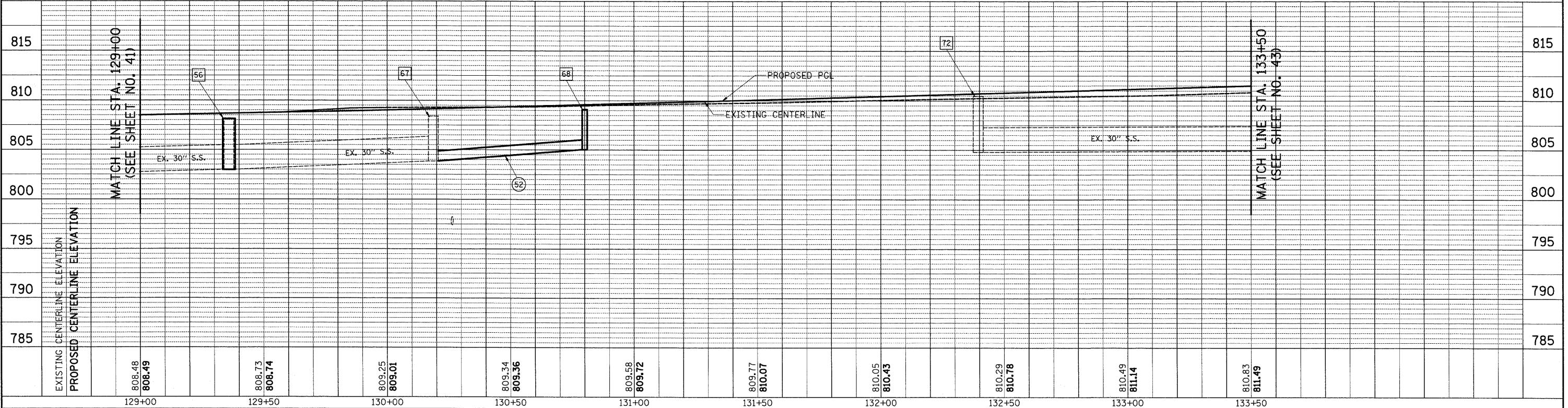


- 42 53' - 12" S.S., CL. A, T-2 @ 0.45% T.B.F. = 8.1 CU. YD.
- 43 42' - 12" S.S. REMOVAL
- 44 38' - 12" S.S., CL. A, T-1 @ 0.5% T.B.F. = 5.2 CU. YD.
- 45 5' - 12" S.S. REMOVAL T.B.F. = 0.7 CU. YD.
- 46 49' - 12" S.S. REMOVAL T.B.F. = 6.5 CU. YD.
- 47 NOT USED
- 48 2' - 12" S.S., CL. A, T-1 @ 0.5% T.B.F. = 0 CU. YD.
- 49 6' - 12" S.S., CL. A, T-1 @ 0.5% T.B.F. = 0.8 CU. YD.
- 50 33' - 24" S.S., WM REQ, T-1 @ 0.55% T.B.F. = 3.6 CU. YD.
- 51 38' - 12" S.S. REMOVAL
- 52 59' - 12" S.S., CL. A, T-2 @ 2.0% T.B.F. = 9.5 CU. YD.
- 53 5' - 24" S.S. REMOVAL
- 54 5' - 24" S.S. REMOVAL
- 55 NOT USED

- 11 STA. 129+56.1, 41.0' LT V.V. TO BE RECONSTRUCTED EX RIM = 809.02 PR RIM = 808.49
- 12 STA. 129+60.9, 39.6' RT V.V. TO BE RECONSTRUCTED EX RIM = 808.82 PR RIM = 808.00
- 13 STA. 130+28.7, 33.6' LT V.V. TO BE RECONSTRUCTED EX RIM = 809.49 PR RIM = 808.63
- 14 STA. 130+32.3, 25.6' LT FIRE HYDRANT TO BE REMOVED
- 15 STA. 130+47.0, 27.0' LT FH W/ AUX VALVE & VALVE BOX PRESSURE CONNECTION
- 16 7' - DUCTILE IRON WATERMAIN, 6" T.B.F. = 5.3 CU. YD.
- A STA. 130+27.5, 50.8' RT SAN. MH TO BE ADJUSTED EX RIM = 808.76 PR RIM = 807.90



LEGEND
 PIPE UNDERDRAIN, 4" (25' AT EACH LOCATION)



FILE NAME = ...cad\sheets\2215.D&U 07.dgn	USER NAME = krk	DESIGNED - JAT	REVISED -	STATE OF ILLINOIS DEPARTMENT OF TRANSPORTATION	WRIGHT BOULEVARD DRAINAGE & UTILITIES	F.A.U. RTE. 1351	SECTION 06-00090-00-PV	COUNTY COOK	TOTAL SHEETS 137	SHEET NO. 42
PLOT SCALE = 28.0000' / IN.	CHECKED - DJK	REVISOR -	DATE = 10-16-09			CONTRACT NO. 63378				
PLOT DATE = 10/29/2009	DATE = 10-16-09	REVISOR -				SHEET NO. 7 OF 10 SHEETS				
						STA. 129+00 TO STA. 133+50				