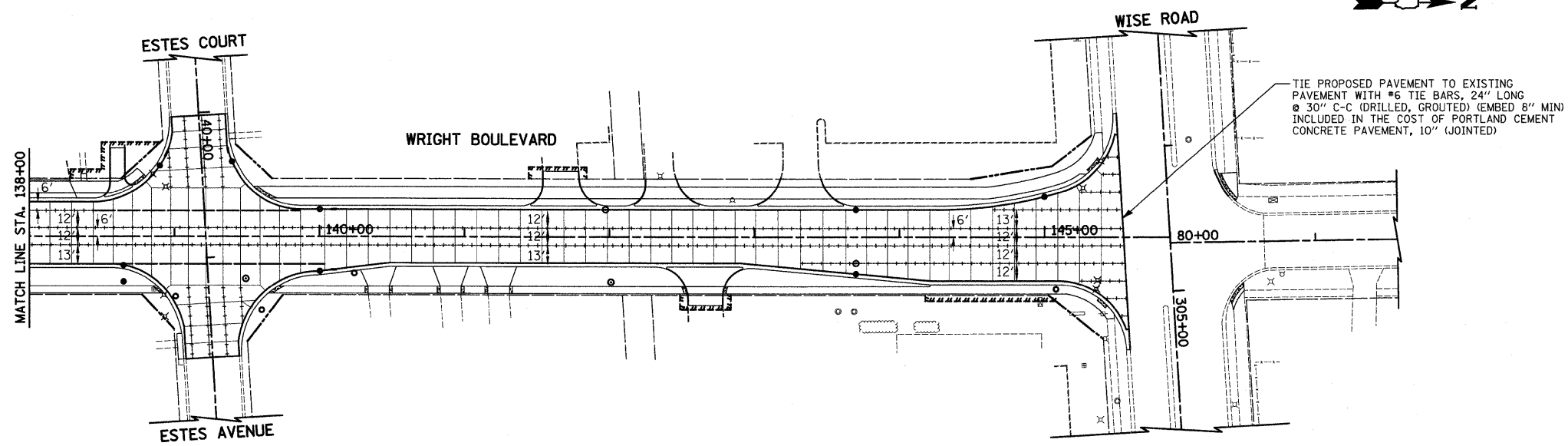
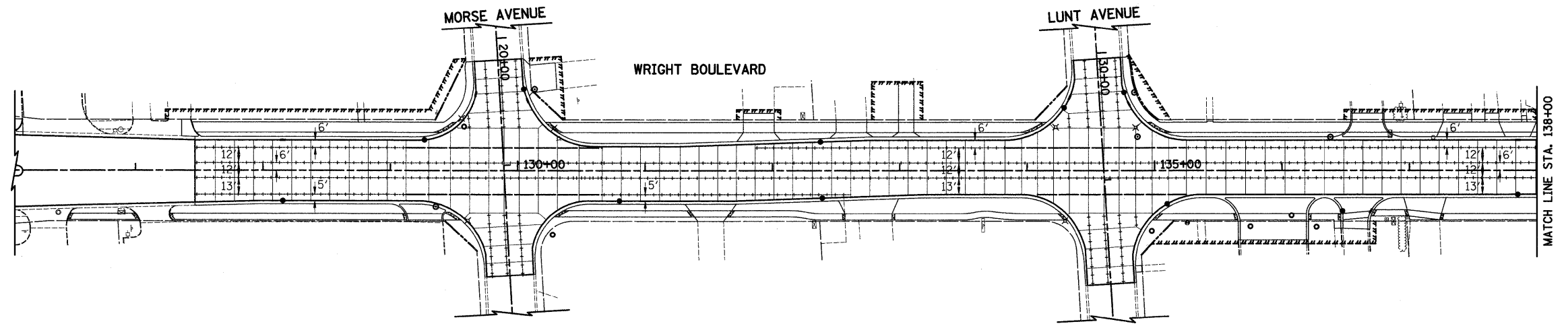


PLAN	SURVEYED	DATE
	PLOTTED	BY
	CHECKED	
	REVISIONS	
	RT. WORKMAN CHECKED	
	CADD FILE NAME	
	NO.	

PROFILE	SURVEYED	DATE
	GRADES CHECKED	BY
	STRUCTURE NOTATIONS CHECKED	
	NO.	

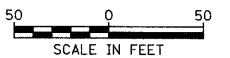


**LEGEND**

- LONGITUDINAL JOINT  
#6 TIE BARS AT 30" C-C SPACING FOR SAWED JOINTS  
#6 TIE BARS AT 24" C-C SPACING FOR CONSTRUCTION JOINTS
- TRANSVERSE CONTRACTION JOINT WITH 1.5" DIA. DOWEL BARS AT 12" C-C SPACING
- LONGITUDINAL JOINT WITH 1.5" DIA. DOWEL BARS AT 12" C-C SPACING

**NOTES**

1. TRANSVERSE DOWELED JOINTS SHALL BE TYPICALLY SPACED AT 15' O.C. JOINT LAYOUT MAY BE MODIFIED (±3' PER STANDARD 420101 & 420106) UPON APPROVAL BY THE ENGINEER. NO ADDITIONAL COMPENSATION SHALL BE DUE TO THE CONTRACTOR FOR CHANGES TO THE PROPOSED JOINT LAYOUT SHOWN.
2. REFERENCE IDOT STANDARD 420001, 420101, 420106, & 420111 FOR ADDITIONAL JOINTING DETAILS.



FILE NAME = J:\2215\cad\sheet\2215\_JOINT 02.dgn

USER NAME = jst  
 DESIGNED - BJC  
 DRAWN - BJC  
 CHECKED - DJK  
 DATE - 10-16-09

REVISED -  
 REVISED -  
 REVISED -  
 REVISED -

**STATE OF ILLINOIS  
 DEPARTMENT OF TRANSPORTATION**

**WRIGHT BOULEVARD  
 JOINTING PLAN**

SHEET NO. 2 OF 2 SHEETS

F.A.U. RTE.	SECTION	COUNTY	TOTAL SHEETS	SHEET NO.
1351	06-00090-00-PV	COOK	137	64
<b>CONTRACT NO. 63378</b>				
FED. ROAD DIST. NO. 1   ILLINOIS   FED. AID PROJECT ARA-M-8003 (809)				