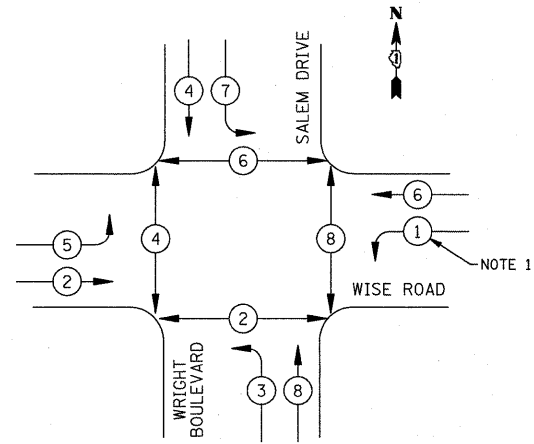


DATE	
BY	
REVIEWED	
PLOTTED	
NOTE BOOK	
NO.	
NO.	
NO.	
NO.	
NO.	
NO.	

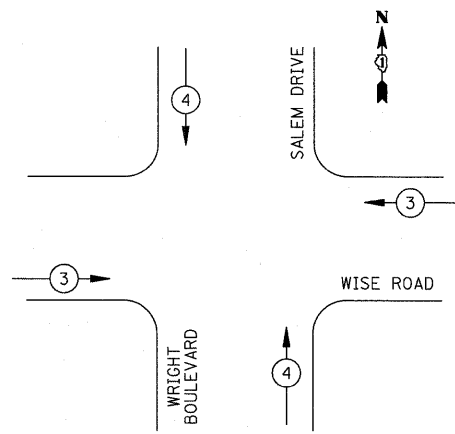
DATE	
BY	
REVIEWED	
PLOTTED	
NOTE BOOK	
NO.	
NO.	
NO.	
NO.	
NO.	
NO.	

TEMPORARY CONTROLLER SEQUENCE



- LEGEND**
- DUAL ENTRY PHASE
 - SINGLE ENTRY PHASE
 - OVERLAP
 - PEDESTRIAN PHASE
 - NUMBER REFERS TO ASSOCIATED PHASE

TEMPORARY EMERGENCY VEHICLE PREEMPTION SEQUENCE



PROPOSED EMERGENCY VEHICLE PREEMPTORS		
EMERGENCY VEHICLE PREEMPTOR	3	4
MOVEMENT	←	↑

TEMPORARY CABLE DIAGRAM LEGEND

- TEMPORARY TRAFFIC SIGNAL SECTION OR PEDESTRIAN SIGNAL SECTION 12" (300mm)
- TEMPORARY CONTROLLER CABINET
- TEMPORARY SERVICE INSTALLATION
- INDICATES NUMBER OF CONDUCTORS IN CABLE. ALL CONDUCTORS TO BE NUMBER 14 AWG WIRE UNLESS OTHERWISE NOTED.
- EMERGENCY VEHICLE LIGHT DETECTOR
- CONFIRMATION BEACON
- VEHICLE DETECTOR, INDUCTION LOOP
- PUSHBUTTON DETECTOR
- 12" (300mm) PEDESTRIAN SIGNAL SECTION
- VIDEO VEHICLE DETECTOR
- TEMPORARY TELEPHONE SERVICE INSTALLATION

PHASE DESIGNATION DIAGRAM

ESTIMATED BILL OF MATERIALS

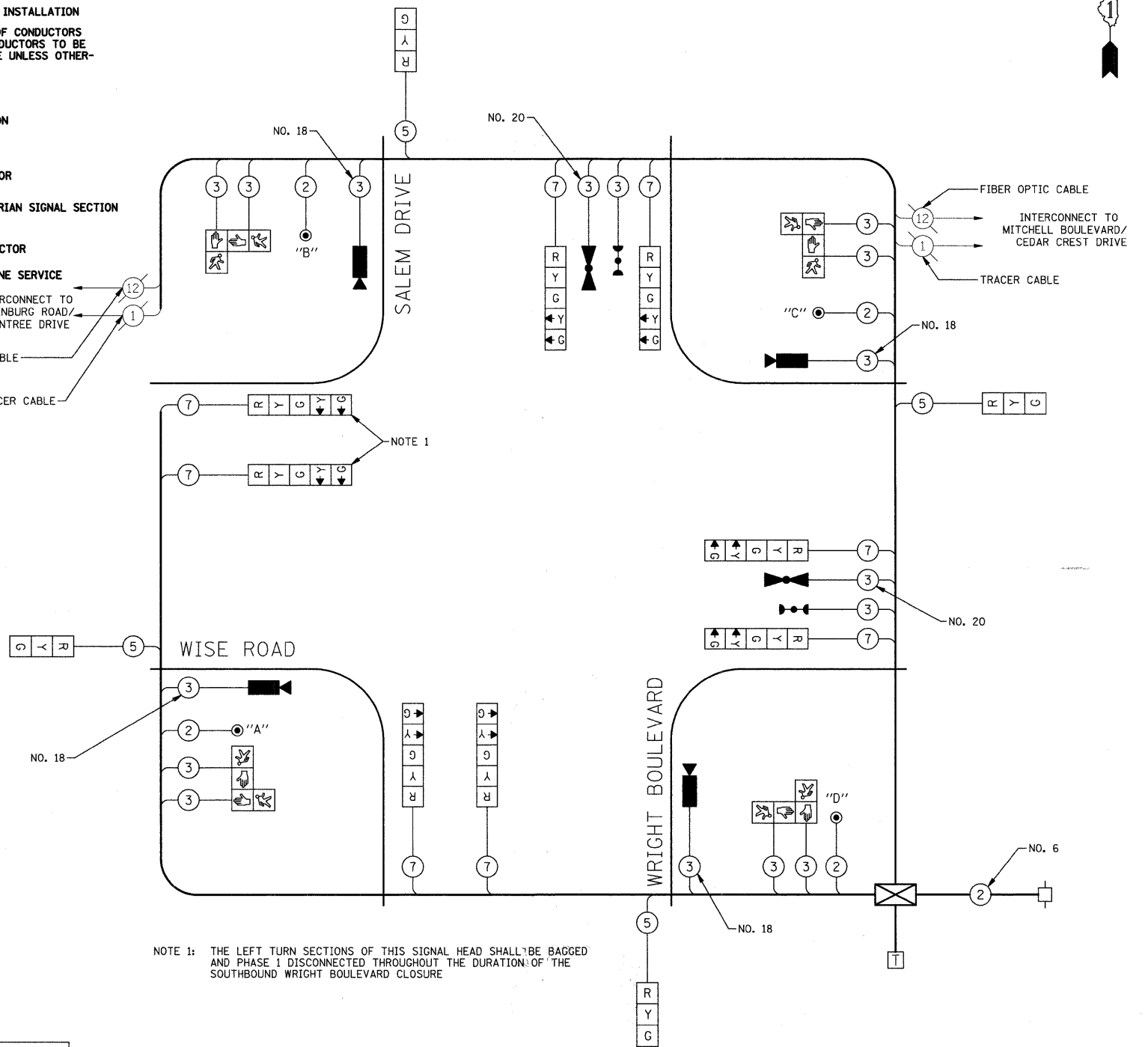
PAY ITEM	UNIT	QUANTITY
CONDUIT IN TRENCH, 2" DIA., GALVANIZED STEEL	FOOT	23
TEMPORARY WOOD POLE (CLASS 5 OR BETTER), 45 FOOT MINIMUM	EACH	4
FULL-ACTUATED CONTROLLER AND TEMPORARY CABINET	EACH	1
MASTER CONTROLLER	EACH	1
SPAN WIRE	FOOT	474
TETHER WIRE	FOOT	445
ELECTRIC CABLE AERIAL SUSPENDED, SIGNAL, NO. 14 2C	FOOT	649
ELECTRIC CABLE AERIAL SUSPENDED, SIGNAL, NO. 14 3C	FOOT	1676
ELECTRIC CABLE AERIAL SUSPENDED, SIGNAL, NO. 14 5C	FOOT	774
ELECTRIC CABLE AERIAL SUSPENDED, SIGNAL, NO. 14 7C	FOOT	1550
ELECTRIC CABLE AERIAL SUSPENDED, COMMUNICATION, NO. 18 3C	FOOT	649
ELECTRIC CABLE AERIAL SUSPENDED, SERVICE, NO. 6 2C	FOOT	60
ELECTRIC CABLE AERIAL SUSPENDED, NO. 20 3C, TWISTED, SHIELDED	FOOT	378
DRILL EXISTING HANDHOLE	EACH	2
SIGNAL HEAD, L.E.D., 1-FACE, 3-SECTION, SPAN WIRE MOUNTED	EACH	4
SIGNAL HEAD, L.E.D., 1-FACE, 5-SECTION, SPAN WIRE MOUNTED	EACH	8
LIGHT DETECTOR	EACH	2
LIGHT DETECTOR AMPLIFIER	EACH	1
REMOVE ELECTRIC CABLE FROM CONDUIT	FOOT	226
VIDEO DETECTION SYSTEM (COMPLETE INTERSECTION)	EACH	1
SERVICE INSTALLATION, POLE MOUNTED	EACH	1
PEDESTRIAN SIGNAL HEAD, L.E.D., 2-FACE, BRACKET MOUNTED	EACH	4
PEDESTRIAN PUSH-BUTTON	EACH	4
TEMPORARY TELEPHONE SERVICE INSTALLATION	EACH	1

I.D.O.T. TRAFFIC SIGNAL INSTALLATION ELECTRICAL SERVICE REQUIREMENTS					TOTAL WATTAGE
TYPE	NO. LAMPS	WATTAGE INCAND.	LED	% OPERATION	
SIGNAL (RED)	12		17	0.50	102
(YELLOW)	12		25	0.25	75
(GREEN)	12		15	0.25	45
ARROW	8		12	0.10	10
PED. SIGNAL	8		25	1.00	200
CONTROLLER	1		100	1.00	100
FLASHER				0.50	
TOTAL =					532

ENERGY COSTS TO: COOK COUNTY HIGHWAY DEPARTMENT
69 WEST WASHINGTON STREET
CHICAGO, IL 60602
CONTACT: MARK GLOECKLE
PHONE: (630) 691-4529
COMPANY: COM ED

TEMPORARY RADIO INTERCONNECT MAY BE USED ON THIS PROJECT AS SHOWN IN THE PLANS. RADIO ANTENNAS SHOULD BE INSTALLED ON THE WOOD POLE ADJACENT TO THE TEMPORARY CONTROLLER, ON THE SOUTHEAST MAST ARM AT THE INTERSECTION OF WISE ROAD AND RODENBURG ROAD/BRAINTREE DRIVE, AND ON THE SOUTHWEST MAST ARM AT THE INTERSECTION OF WISE ROAD AND MITCHELL BOULEVARD/CEDARCREST DRIVE. ALL WORK RELATED TO INSTALLATION AND ENSURING PROPER OPERATION OF THE TEMPORARY INTERCONNECT SHALL BE INCIDENTAL TO THE PAY ITEM "TEMPORARY TRAFFIC SIGNAL INSTALLATION".

FOUNDATION (DEPTH)	FT. (m)	CABLE SLACK	FT. (m)	VERTICAL	FT. (m)
TYPE A - POST	4 (1.2)	HANDHOLE	6.5 (2.0)	ALL FOUNDATIONS	3.5 (2.0)
D- CONTROLLER	4 (1.2)	DOUBLE HANDHOLE	13 (4.0)	MAST ARM (L) POLE	20'+L-2'
E- M. ARM POLE		SIGNAL POST	2 (1.0)		6m+L-0.6m
24" (600mm)	10 (3.0)	CONTROLLER CAB.	1 (0.5)	BRACKET MOUNTED	13 (4.0)
30" (750mm)	15 (4.6)	FIBER OPTIC	13 (4.0)	PED. PUSHBUTTON	4 (1.2)
36" (900mm)	15 (4.6)	ELECTRIC SERVICE	1 (0.5)	ELECTRIC SERVICE	13.5 (4.1)
		GROUND CABLE	1 (0.5)	SERVICE TO GROUND	13.5 (4.1)
				POST MOUNTED	6 (1.8)



NOTE 1: THE LEFT TURN SECTIONS OF THIS SIGNAL HEAD SHALL BE BAGGED AND PHASE 1 DISCONNECTED THROUGHOUT THE DURATION OF THE SOUTHBOUND WRIGHT BOULEVARD CLOSURE

TEMPORARY CABLE PLAN
NOT TO SCALE

NOTE:
PUSHBUTTON "A" SHALL PLACE A CALL IN PHASES 2 AND 4.
PUSHBUTTON "B" SHALL PLACE A CALL IN PHASES 4 AND 6.
PUSHBUTTON "C" SHALL PLACE A CALL IN PHASES 6 AND 8.
PUSHBUTTON "D" SHALL PLACE A CALL IN PHASES 2 AND 8.

NOTE:
THE TRAFFIC SIGNAL CONTROLLER EQUIPMENT FOR THIS PROJECT SHALL BE "ECONOLITE" TO MATCH THE EXISTING ADJACENT SYSTEM.

FILE NAME =	USER NAME = djk	DESIGNED - BRD	REVISED -
...\\81.Wise.Rd\Wright.Temp.Cable.Plan&S00.dgn		DRAWN - OJT	REVISED -
		CHECKED - JJE	REVISED -
		DATE - 10-16-09	REVISED -

STATE OF ILLINOIS
DEPARTMENT OF TRANSPORTATION

TEMPORARY CABLE PLAN
WISE ROAD AT WRIGHT BOULEVARD/SALEM DRIVE

SCALE: N.T.S. SHEET NO. 13 OF 25 SHEETS

F.A.U. RTE.	SECTION	COUNTY	TOTAL SHEETS	SHEET NO.
1351	06-00090-00-PV	COOK	137	81
CONTRACT NO. 63378				
FED. ROAD DIST. NO. 1 ILLINOIS FED. AID PROJECT ARA-M-6003 (809)				