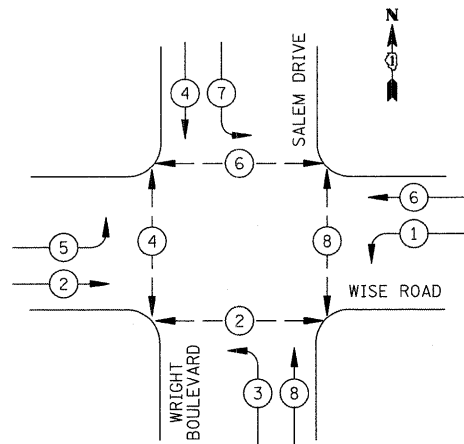
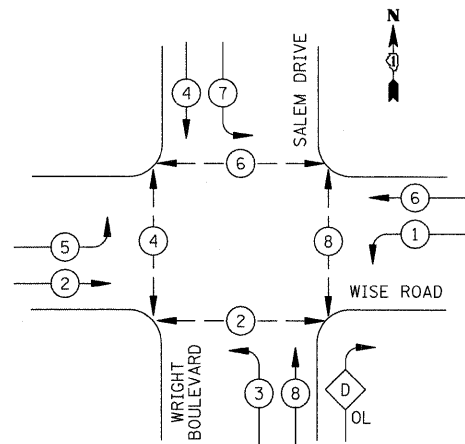


DATE	
BY	
PLAN	
NO.	
DATE	
BY	
PROFILE	
NO.	
DATE	
BY	
PLAN	
NO.	
DATE	
BY	
PROFILE	
NO.	

EXISTING CONTROLLER SEQUENCE



PROPOSED CONTROLLER SEQUENCE



LEGEND

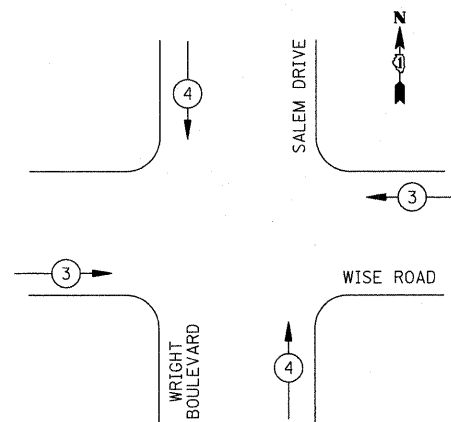
- DUAL ENTRY PHASE
- SINGLE ENTRY PHASE
- OVERLAP
- PEDESTRIAN PHASE
- NUMBER REFERS TO ASSOCIATED PHASE

PHASE DESIGNATION DIAGRAM

RIGHT TURN OVERLAP PHASE DESIGNATION

OVERLAP LETTER	PERMISSIVE PHASE	PROTECTED PHASE
D	= 8	+ 1

EXISTING AND PROPOSED EMERGENCY VEHICLE PREEMPTION SEQUENCE



PROPOSED EMERGENCY VEHICLE PREEMPTORS		
EMERGENCY VEHICLE PREEMPTOR	3	4
MOVEMENT		

SCHEDULE OF QUANTITIES

PAY ITEM	UNIT	QUANTITY
INSTALL EXISTING SIGN PANEL	50 FT	42
CONDUIT IN TRENCH, 2" DIA., GALVANIZED STEEL	FOOT	245
CONDUIT IN TRENCH, 2 1/2" DIA., GALVANIZED STEEL	FOOT	40
CONDUIT IN TRENCH, 3" DIA., GALVANIZED STEEL	FOOT	6
CONDUIT IN TRENCH, 5" DIA., GALVANIZED STEEL	FOOT	10
CONDUIT PUSHED, 2" DIA., GALVANIZED STEEL	FOOT	93
CONDUIT PUSHED, 2 1/2" DIA., GALVANIZED STEEL	FOOT	27
CONDUIT PUSHED, 4" DIA., GALVANIZED STEEL	FOOT	62
CONDUIT PUSHED, 5" DIA., GALVANIZED STEEL	FOOT	208
HEAVY-DUTY HANDHOLE	EACH	1
DOUBLE HANDHOLE	EACH	2
TRENCH AND BACKFILL FOR ELECTRICAL WORK	FOOT	296
ELECTRIC CABLE IN CONDUIT, SIGNAL NO. 14 2C	FOOT	675
ELECTRIC CABLE IN CONDUIT, SIGNAL NO. 14 3C	FOOT	1707
ELECTRIC CABLE IN CONDUIT, SIGNAL NO. 14 5C	FOOT	1314
ELECTRIC CABLE IN CONDUIT, SIGNAL NO. 14 7C	FOOT	1870
ELECTRIC CABLE IN CONDUIT, LEAD-IN, NO. 14 1 PAIR	FOOT	3298
ELECTRIC CABLE IN CONDUIT, SERVICE, NO. 6 2C	FOOT	27
TRAFFIC SIGNAL POST, GALVANIZED STEEL, 10 FT.	EACH	1
TRAFFIC SIGNAL POST, GALVANIZED STEEL, 16 FT.	EACH	2
STEEL MAST ARM ASSEMBLY AND POLE, 22 FT.	EACH	1
STEEL MAST ARM ASSEMBLY AND POLE, 48 FT.	EACH	1
CONCRETE FOUNDATION, TYPE A	FOOT	12
CONCRETE FOUNDATION, TYPE C	FOOT	4
CONCRETE FOUNDATION, TYPE E 30-INCH DIAMETER	FOOT	15
CONCRETE FOUNDATION, TYPE E 36-INCH DIAMETER	FOOT	15
DRILL EXISTING HANDHOLE	EACH	3
SIGNAL HEAD, L.E.D., 1-FACE, 5-SECTION, MAST ARM MOUNTED	EACH	1
SIGNAL HEAD, L.E.D., 2-FACE, 5-SECTION, BRACKET MOUNTED	EACH	1
PEDESTRIAN SIGNAL HEAD, L.E.D., 2-FACE, BRACKET MOUNTED, WITH COUNTDOWN TIMER	EACH	4
TRAFFIC SIGNAL BACKPLATE, LOUVERED, ALUMINUM	EACH	1
INDUCTIVE LOOP DETECTOR	EACH	1
PEDESTRIAN PUSH-BUTTON	EACH	4
TEMPORARY TRAFFIC SIGNAL INSTALLATION	EACH	1
RELOCATE EXISTING SIGNAL HEAD	EACH	5
RELOCATE EXISTING TRAFFIC SIGNAL CONTROLLER	EACH	1
RELOCATE EXISTING EMERGENCY VEHICLE PRIORITY SYSTEM, DETECTOR UNIT	EACH	1
MODIFY EXISTING CONTROLLER	EACH	1
REMOVE ELECTRIC CABLE FROM CONDUIT	FOOT	6363
REMOVE EXISTING TRAFFIC SIGNAL EQUIPMENT	EACH	1
REMOVE EXISTING HANDHOLE	EACH	3
REMOVE EXISTING CONCRETE FOUNDATION	EACH	5
PREFORMED DETECTOR LOOP	FOOT	301
TEMPORARY TRAFFIC SIGNAL TIMING	EACH	1
TELEPHONE SERVICE INSTALLATION	EACH	1
SERVICE INSTALLATION, POLE MOUNTED	EACH	1
GROUNDING EXISTING HANDHOLE FRAME AND COVER	EACH	4
RELOCATE EXISTING MASTER CONTROLLER	EACH	1
UNINTERRUPTIBLE POWER SUPPLY	EACH	1
ELECTRIC CABLE IN CONDUIT, GROUNDING, NO. 6 1C	FOOT	615
ELECTRIC CABLE IN CONDUIT, NO. 20 3C, TWISTED, SI	FOOT	310

DATE	
BY	
PROFILE	
NO.	
DATE	
BY	
PLAN	
NO.	
DATE	
BY	
PROFILE	
NO.	

FILE NAME =	USER NAME = jat
J:\2215\ced\sheets\Signals\85.Wise Rd@Wright	ht.Sequences&S00.dgn
PLOT SCALE = 50,0000' / IN.	
PLOT DATE = 10/15/2009	

SIGNED - BRD	REVISED -
AWN - OJT	REVISED -
ECKED - JJE	REVISED -
TE - 10-16-09	REVISED -

STATE OF ILLINOIS
DEPARTMENT OF TRANSPORTATION

SCALE: N.

SEQUENCES AND SCHEDULE OF QUANTITIES
WISE ROAD AT WRIGHT BOULEVARD

F.A.J. RTE.	SECTION	COUNTY	TOTAL SHEETS	SHEET NO.
1351	06-00090-00-PV	COOK	137	85
CONTRACT NO. 63378				
FED. ROAD DIST. NO. 1 ILLINOIS FED. AID PROJECT ARA-M-8003 (809)				

SHEET NO. 17 OF 25 SHEETS