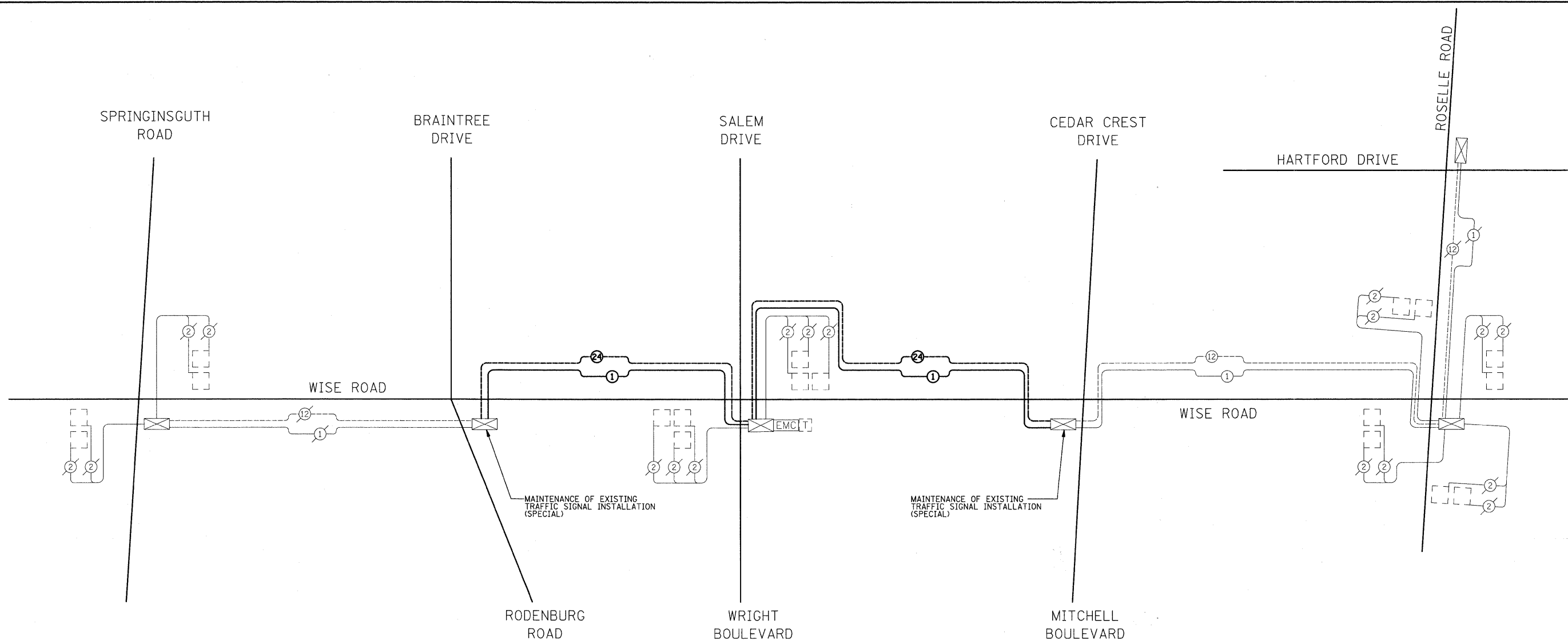




PLAN	REVIEWED	DATE
NOTE BOOK	PLOTTED	
NO.	ALIGNMENT CHECKED	
	FIELD FILE NAME	

PROFILE	REVIEWED	DATE
NOTE BOOK	PLOTTED	
NO.	GRADES CHECKED	
	STRUCTURE NOTATIONS CHKD	



INTERCONNECT SCHEMATIC LEGEND

EXISTING INTERSECTION CONTROLLER		EXISTING FIBER OPTIC CABLE IN CONDUIT, NO. 62.5/125, MM12F SM12F	
PROPOSED INTERSECTION CONTROLLER		PROPOSED FIBER OPTIC CABLE IN CONDUIT, NO. 62.5/125, MM12F SM12F	
EXISTING MASTER CONTROLLER		EXISTING INTERCONNECT CABLE - NO. 62.5/125 12F FIBER OPTIC CABLE	
PROPOSED MASTER CONTROLLER		PROPOSED INTERCONNECT CABLE - NO. 62.5/125 12F FIBER OPTIC CABLE	
MASTER MASTER CONTROLLER		EXISTING INTERCONNECT CABLE - NO. 18 3 PAIR TWISTED, SHIELDED	
EXISTING INTERSECTION & SAMPLING (SYSTEM) DETECTORS		PROPOSED INTERCONNECT CABLE - NO. 18 3 PAIR TWISTED, SHIELDED	
PROPOSED INTERSECTION & SAMPLING (SYSTEM) DETECTORS		EXISTING LOOP DETECTOR CABLE 2/C TWISTED, SHIELDED	
EXISTING INTERSECTION LOOP DETECTORS		PROPOSED LOOP DETECTOR CABLE 2/C TWISTED, SHIELDED	
PROPOSED SAMPLING (SYSTEM) DETECTORS		EXISTING ELECTRIC CABLE, 1/C (AS SPECIFIED)	
EXISTING SAMPLING (SYSTEM) DETECTORS		PROPOSED ELECTRIC CABLE, 1/C (AS SPECIFIED)	
EXISTING SAMPLING (SYSTEM) DETECTORS, PROPOSED INTERSECTION AND SAMPLING (SYSTEM) DETECTORS.		EXISTING TELEPHONE CONNECTION	
EXISTING SAMPLING (SYSTEM) DETECTORS, PROPOSED SAMPLING (SYSTEM) DETECTORS.		PROPOSED TELEPHONE CONNECTION	
EXISTING INTERSECTION & SAMPLING (SYSTEM) DETECTORS		EXISTING FIBER OPTIC CABLE IN CONDUIT, NO. 62.5/125, MM12F SM24F	
PROPOSED INTERSECTION & SAMPLING (SYSTEM) DETECTORS		PROPOSED FIBER OPTIC CABLE IN CONDUIT, NO. 62.5/125, MM12F SM24F	
EXISTING SAMPLING (SYSTEM) PREFORMED DETECTORS		EXISTING VIDEO DETECTION CAMERA	
PROPOSED SAMPLING (SYSTEM) PREFORMED DETECTORS		PROPOSED VIDEO DETECTION CAMERA	
		EXISTING PTZ CAMERA	
		PROPOSED PTZ CAMERA	

SCHEDULE OF QUANTITIES			
PAY ITEM	UNIT	QUANTITY	
MAINTENANCE OF EXISTING TRAFFIC SIGNAL INSTALLATION (SPECIAL)	EACH	2	
REMOVE ELECTRIC CABLE FROM CONDUIT	FOOT	5563	
ELECTRIC CABLE IN CONDUIT, TRACE NO. 14 1C	FOOT	5563	
FIBER OPTIC CABLE IN CONDUIT, NO. 2.5/125, MM12F SM12F	FOOT	5611	
RE-OPTIMIZE TRAFFIC SIGNAL SYSTEM LEVEL 2	EACH	1	
REMOVE FIBER OPTIC CABLE FROM CONDUIT	FOOT	5611	

NOTE: MAINTENANCE RESPONSIBILITIES AT THE INTERSECTIONS NOTED ABOVE SHALL BEGIN 7 DAYS PRIOR TO THE START OF ANY WORK AT THE INTERSECTION.

NOTE: THE TRAFFIC SIGNAL CONTROLLER EQUIPMENT FOR THIS PROJECT SHALL BE "ECONOLITE" TO MATCH THE EXISTING ADJACENT SYSTEM.