

F.A.U. RTE.	SECTION	COUNTY	TOTAL SHEETS	SHEET NO.
2416	09-00015-00-RS	097(LAKE)LK	10	1
FED. ROAD DIST. NO.	ILLINOIS	CONTRACT NO. 63395		

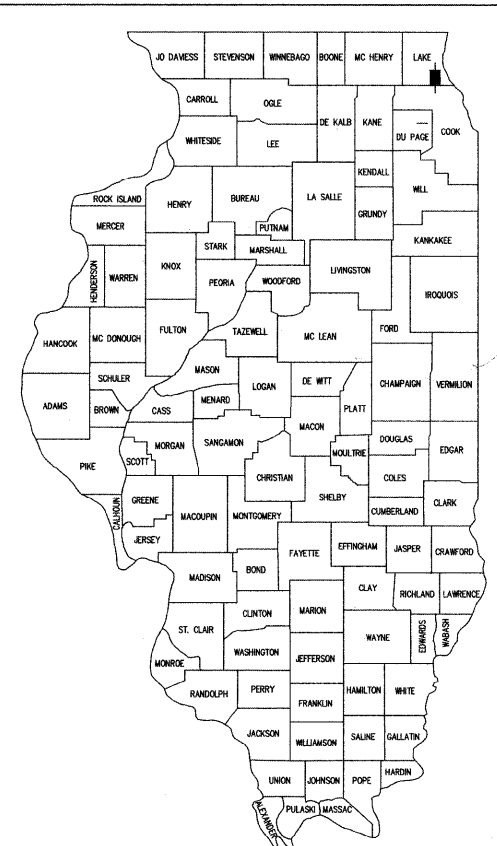
STATE OF ILLINOIS  
DEPARTMENT OF TRANSPORTATION  
DIVISION OF HIGHWAYS

PLANS FOR PROPOSED  
FEDERAL AID HIGHWAY

FAU 2416 / SAUNDERS RD  
RIVERWOODS ROAD (FAU 2698) TO DUFFY LANE (FAU 1254)  
RESURFACING PROJECT  
SECTION: 09-00015-00-RS  
JOB NO. 91-893-09  
PROJECT NO. ARA-9003(459)  
VILLAGE OF RIVERWOODS, ILLINOIS  
LAKE COUNTY

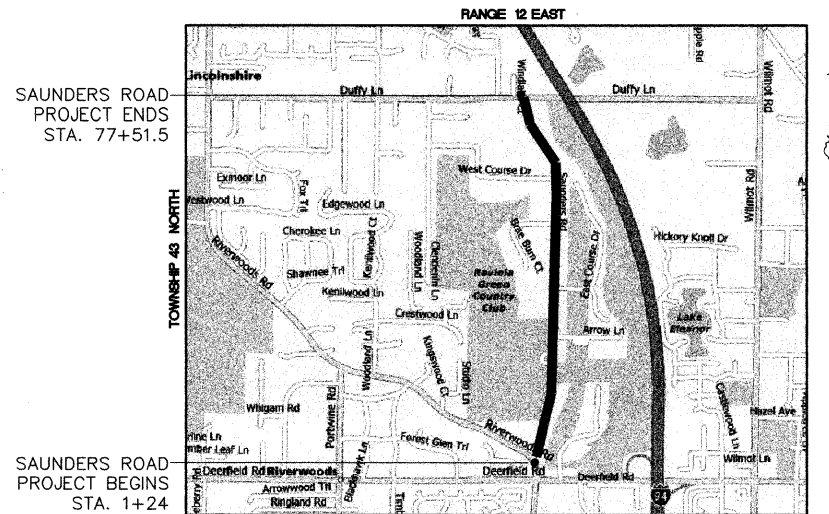
INDEX OF SHEETS

- COVER SHEET, INDEX OF SHEETS, LIST OF STATE STANDARDS
- GENERAL NOTES & SUMMARY OF QUANTITIES
- TYPICAL SECTIONS
- 6. PROPOSED CONDITIONS - PLAN VIEW
- 10. CONSTRUCTION DETAILS



LOCATION OF SECTION INDICATED THIS: [Symbol]

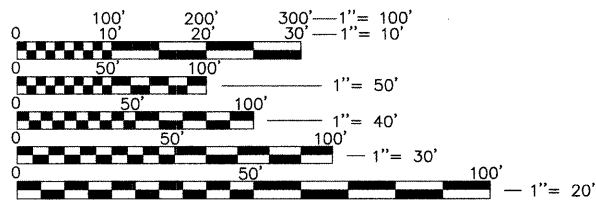
PROJECT LOCATION MAP  
(NOT TO SCALE)



PROJECT INFORMATION

LENGTH OF PROJECT = 7627.5 FT (1.44 MI)  
ADT = 1740 VPD (2009)  
POSTED SPEED LIMIT = 30 MPH  
DESIGN SPEED = 35 MPH  
ROAD CLASSIFICATION = URBAN COLLECTOR

FULL SIZE PLANS HAVE BEEN PREPARED USING STANDARD ENGINEERING SCALES. REDUCED SIZED PLANS WILL NOT CONFORM TO STANDARD SCALES. IN MAKING MEASUREMENTS ON REDUCED PLANS, THE BELOW SCALES MAY BE USED.



J.U.L.I.E.

JOINT UTILITY LOCATION INFORMATION FOR EXCAVATION CALL 811



Know what's below.  
Call before you dig.

EXISTING UTILITIES: WHEN THE PLANS OR SPECIAL PROVISIONS INCLUDE INFORMATION PERTAINING TO THE LOCATION OF UNDERGROUND UTILITY FACILITIES, SUCH INFORMATION REPRESENTS ONLY THE OPINION OF THE ENGINEER AS TO THE LOCATION OF SUCH UTILITIES AND IS ONLY INCLUDED FOR THE CONVENIENCE OF THE BIDDER. THE ENGINEER AND OWNER ASSUME NO RESPONSIBILITY WHATSOEVER IN RESPECT TO THE SUFFICIENCY OR ACCURACY OF THE INFORMATION SHOWN ON THE PLANS RELATIVE TO THE LOCATION OF UNDERGROUND UTILITY FACILITIES OR THE MANNER IN WHICH THEY ARE TO BE REMOVED OR ADJUSTED. IT SHALL BE THE CONTRACTOR'S RESPONSIBILITY TO DETERMINE THE ACTUAL LOCATION OF ALL SUCH FACILITIES. HE SHALL ALSO OBTAIN FROM THE RESPECTIVE UTILITY COMPANIES, DETAILED INFORMATION RELATIVE TO THE LOCATION OF THEIR FACILITIES AND THE WORKING SCHEDULES OF THE UTILITY COMPANIES FOR REMOVING OR ADJUSTING THEM.

CONTRACTOR IS RESPONSIBLE FOR CONTACTING J.U.L.I.E. AT 1-800-892-0123 AND MUST ACQUIRE A DIG NUMBER A MINIMUM OF 72 HOURS PRIOR TO ANY WORK BEING DONE.

NOTE:

THE CONTRACTOR IS SOLELY RESPONSIBLE FOR JOBSITE SAFETY.

CONTRACT NO: 63395

FILE NAME =  
9770-263\_Saunders.dwg

ASSOCIATE FIELD ENGINEER: KEVIN STALLWORTH, P.E. (847) 705-4169

**GHA** GEWALT HAMILTON ASSOCIATES, INC.

850 Forest Edge Drive ■ Vernon Hills, IL 60061  
Phone: 847-478-9700 Fax: 847-478-9701

PROFESSIONAL ENGINEER'S SIGN & SEAL

Leo X. Morand  
LEO X. MORAND  
082-08083  
LICENSED  
PROFESSIONAL  
ENGINEER  
STATE OF ILLINOIS  
EXPIRES: 11-30-09

PRINTED BY THE AUTHORITY  
OF THE STATE OF ILLINOIS

**GENERAL NOTES**

A-1 THE ILLINOIS DEPARTMENT OF TRANSPORTATION "STANDARD SPECIFICATIONS FOR ROAD AND BRIDGE CONSTRUCTION" LATEST EDITION, THE "STANDARD SPECIFICATIONS FOR WATER AND SEWER MAIN CONSTRUCTION IN ILLINOIS" LATEST EDITION, PROJECT SPECIFICATIONS, ALL APPLICABLE REQUIREMENTS OF THE ILLINOIS ENVIRONMENTAL PROTECTION AGENCY, MUNICIPALITY, ORDINANCES OF AUTHORITIES HAVING JURISDICTION AND ALL ADDENDA THERE SHALL GOVERN THIS WORK.

A-2 ALL REFERENCES TO "ENGINEER" SHALL BE INTERPRETED TO MEAN THE RESIDENT ENGINEER.

A-3 NO CONSTRUCTION PLANS SHALL BE USED FOR CONSTRUCTION UNLESS SPECIFICALLY MARKED 'FOR CONSTRUCTION'. PRIOR TO COMMENCEMENT OF CONSTRUCTION, THE CONTRACTOR SHALL VERIFY ALL DIMENSIONS, AND CONDITIONS AFFECTING THEIR WORK WITH THE ACTUAL CONDITIONS AT THE JOB SITE. IN ADDITION, THE CONTRACTOR MUST VERIFY THE ENGINEERS' LINE AND GRADES. IF THERE ARE ANY DISCREPANCIES FROM WHAT IS SHOWN ON THE CONSTRUCTION PLANS, STANDARD SPECIFICATIONS AND/OR SPECIAL DETAILS, THE CONTRACTOR SHALL SECURE WRITTEN INSTRUCTION FROM THE ENGINEER PRIOR TO PROCEEDING WITH ANY PART OF THE WORK AFFECTED BY OMISSION OR DISCREPANCIES. FAILING TO SECURE SUCH INSTRUCTION, THE CONTRACTOR WILL BE CONSIDERED TO HAVE PROCEEDED AT HIS OWN RISK AND EXPENSE. IN THE EVENT OF ANY DOUBT OR QUESTION ARISING WITH RESPECT TO THE TRUE MEANING OF THE CONSTRUCTION PLANS OR SPECIFICATIONS, THE DECISION OF THE ENGINEER SHALL BE FINAL AND CONCLUSIVE.

A-4 IT IS THE CONTRACTOR'S RESPONSIBILITY TO ASCERTAIN EXISTING FIELD CONDITIONS PRIOR TO BIDDING ON THE PROJECT.

A-5 EASEMENTS FOR THE EXISTING UTILITIES, BOTH PUBLIC AND PRIVATE, AND UTILITIES WITHIN PUBLIC RIGHTS-OF-WAY ARE SHOWN ON THE PLANS ACCORDING TO AVAILABLE RECORDS. THE CONTRACTOR SHALL BE RESPONSIBLE FOR DETERMINING THE EXACT LOCATION IN THE FIELD OF THESE UTILITY LINES AND THEIR PROTECTION FROM DAMAGE DUE TO CONSTRUCTION OPERATIONS. IF EXISTING UTILITY LINES OF ANY NATURE ARE ENCOUNTERED WHICH CONFLICT IN LOCATION WITH NEW CONSTRUCTION, THE CONTRACTOR SHALL NOTIFY THE ENGINEER SO THAT THE CONFLICT MAY BE RESOLVED.

A-6 SAW CUTTING OF PAVEMENTS, SIDEWALK, ETC. SHALL BE TO FULL DEPTH AND SHALL RESULT IN A CLEAN STRAIGHT EDGE ON THE PORTION REMAINING. ALL SAW CUTTING SHALL BE CONSIDERED INCLUDED IN THE COST OF THE ITEM REMOVED.

A-7 THE CONTRACTOR SHALL PROTECT AND CAREFULLY PRESERVE ALL SECTION OR SUBSECTION MONUMENTS, PROPERTY CORNERS, AND REFERENCE MARKERS UNTIL THE OWNER, HIS AGENT, OR AN AUTHORIZED SURVEYOR HAS WITNESSED OR OTHERWISE REFERENCED THEIR LOCATIONS.

A-8 OFFSET LOCATIONS GIVEN IN THE PLANS FOR STRUCTURES, EDGE OF PAVEMENT, ETC. ARE FROM THE ROADWAY CENTERLINE.

A-9 HOT-MIX ASPHALT SURFACE REMOVAL BUTT JOINTS WILL BE INSTALLED AT THE ENDS OF ALL RESURFACING (WHERE RESURFACING MEETS EXISTING PAVEMENT). IN ACCORDANCE WITH THE BUTT JOINT AND HOT-MIX ASPHALT TAPER DETAILS SHEET INCLUDED IN THE PLANS, UNLESS OTHERWISE SPECIFIED.

A-10 QUANTITIES FOR PATCHING SHALL NOT EXCEED THOSE PROVIDED IN THE SUMMARY OF QUANTITIES UNLESS APPROVED BY THE ENGINEER. THE ENGINEER WILL IDENTIFY FINAL PATCH LOCATIONS IN THE FIELD.

A-11 WHENEVER, DURING CONSTRUCTION OPERATIONS, ANY LOOSE MATERIAL IS DEPOSITED IN THE FLOW LINE OF GUTTERS, DRAINAGE STRUCTURES, DITCHES, ETC. SUCH THAT THE NATURAL FLOW LINE OF WATER IS OBSTRUCTED, THE LOOSE MATERIAL WILL BE REMOVED AT THE CLOSE OF EACH WORKING DAY. AT THE CONCLUSION OF CONSTRUCTION OPERATION, ALL DRAINAGE STRUCTURES AND FLOW LINES SHALL BE FREE FROM DIRT AND DEBRIS. THIS WORK SHALL BE CONSIDERED INCIDENTAL TO THE CONTRACT. THE CONTRACTOR'S FAILURE TO PROVIDE THE ABOVE WILL PRECLUDE ANY POSSIBLE ADDED COMPENSATION REQUESTED DUE TO DELAYS OR UNSUITABLE MATERIALS CREATED AS A RESULT THEREOF.

**STORM SEWERS, WATER MAINS, AND UTILITIES**

B-1 EXISTING UTILITIES: WHEN THE PLANS OR SPECIAL PROVISIONS INCLUDE INFORMATION PERTAINING TO THE LOCATION OF UNDERGROUND UTILITY FACILITIES, SUCH INFORMATION REPRESENTS ONLY THE OPINION OF THE ENGINEER AS TO THE LOCATION OF SUCH UTILITIES AND IS ONLY INCLUDED FOR THE CONVENIENCE OF THE CONTRACTOR. THE ENGINEER AND OWNER ASSUME NO RESPONSIBILITY WHATSOEVER IN RESPECT TO THE SUFFICIENCY OR ACCURACY OF THE INFORMATION SHOWN ON THE PLANS RELATIVE TO THE LOCATION OF UNDERGROUND UTILITY FACILITIES OR THE MANNER IN WHICH THEY ARE TO BE REMOVED OR ADJUSTED. IT SHALL BE THE CONTRACTOR'S RESPONSIBILITY TO DETERMINE THE ACTUAL LOCATION OF ALL SUCH FACILITIES. THIS WORK SHALL BE CONSIDERED AS INCLUDED IN THE UNIT BID PROCESS OF THE CONTRACT, AND NO ADDITIONAL COMPENSATION WILL BE ALLOWED. HE SHALL ALSO OBTAIN FROM THE RESPECTIVE UTILITY COMPANIES DETAILED INFORMATION RELATIVE TO THE LOCATION OF THEIR FACILITIES AND THE WORKING SCHEDULES OF THE UTILITY COMPANIES FOR REMOVING OR ADJUSTING THEM.

B-2 THE CONTRACTOR IS RESPONSIBLE FOR CONTACTING JULIE AS WELL AS LOCAL CABLE TV COMPANIES AND THE VILLAGE. THE FACILITIES SHALL BE LOCATED PRIOR TO ANY WORK WITHIN ANY EASEMENT, R.O.W, OR SUSPECTED UTILITY LOCATION.

B-3 THE CONTRACTOR SHALL BE RESPONSIBLE FOR THE PROTECTION OF ALL UNDERGROUND AND SURFACE UTILITIES EVEN THROUGH THEY MIGHT NOT BE SHOWN ON THE PLANS. ANY UTILITY PROPERTY DAMAGED DURING CONSTRUCTION SHALL BE REPAIRED OR REPLACED TO THE SATISFACTION OF THE OWNER AT THE CONTRACTOR'S EXPENSE.

B-4 ALL UTILITY COMPANIES SHALL BE NOTIFIED AT LEAST 3 DAYS PRIOR TO THE START OF CONSTRUCTION.

B-5 THE CONTRACTOR SHALL ENSURE THAT ALL WATER SYSTEM VALVE VAULTS, AND SANITARY SEWER MANHOLES REMAIN READILY ACCESSIBLE TO THE VILLAGE FOR EMERGENCY OPERATIONS. THE LOCATIONS OF ALL WATER AND SANITARY FACILITIES SHALL BE MARKED AND READILY VISABLE AT ALL TIMES.

**SIGNING AND STRIPING**

C-1 SEE IDOT STANDARD DETAIL 780001, DISTRICT ONE DETAIL TC-13, AND REFERENCE PLAN SHEETS.

**TRAFFIC CONTROL**

D-1 SEE TRAFFIC CONTROL HIGHWAY STANDARDS CONCERNING TRAFFIC CONTROL AND PROTECTION.

**DEBRIS REMOVAL**

MATERIALS RESULTING FROM THE REMOVAL OF ASPHALT SURFACES, UTILITY ADJUSTMENTS, RESTORATION WORK, ETC. SHALL BE REMOVED AT THE END OF EACH DAY TO AN APPROVED SITE. IN THE JUDGEMENT OF THE CITY, SHOULD IT BE NECESSARY TO REMOVE SUCH MATERIALS, THE CITY WILL HAVE THE MATERIAL REMOVED AND THE CONTRACTOR SHALL BE BILLED (CHARGED) ACCORDINGLY.

**WATER SUPPLY**

THE INDISCRIMINATE USE OF FIRE HYDRANTS, EXISTING STREAMS, CREEKS, WETLANDS OR PONDS IS STRICTLY PROHIBITED. THE CONTRACTOR SHALL PROVIDE A WATER TRUCK AND DRIVER AS REQUIRED TO OBTAIN AND TRANSPORT THIS WATER. THE CONTRACTOR SHALL BE RESPONSIBLE FOR OBTAINING WATER FROM AN APPROVED SOURCE OTHER THAN HIS YARD, WRITTEN APPROVAL FROM THE AGENCY HAVING JURISDICTION FOR THE SOURCE. IF THE WATER IS FROM A SOURCE OTHER THAN HIS YARD, WRITTEN APPROVAL FROM THE AGENCY HAVING JURISDICTION FOR THE SOURCE OF THE WATER MUST BE RECEIVED BY THE CONTRACTOR PRIOR TO USE OF THE WATER.

**DRIVEWAY CLOSING**

IT WILL BE THE CONTRACTOR'S RESPONSIBILITY TO NOTIFY RESIDENTS AND THE VILLAGE WHEN ACCESS TO THEIR DRIVEWAYS WILL BE TEMPORARILY CLOSED DUE TO SIDEWALK REPLACEMENT, AND/OR DRIVEWAY REPLACEMENT. AT LOCATIONS WHERE THE DRIVEWAY IS SCHEDULED TO BE REMOVED, THE CONTRACTOR SHALL CONTACT THE BUSINESS/HOMEOWNER 24 HOURS PRIOR TO REMOVING THE CURB, SIDEWALK, OR DRIVE APPROACH. EVERY EFFORT SHALL BE MADE TO ACCOMMODATE ACCESS TO THESE PROPERTIES. THE CONTRACTOR SHALL NOT BE ALLOWED TO CLOSE A DRIVEWAY FOR MORE THAN 8 HOURS UNDER ANY CIRCUMSTANCE. THE CONTRACTOR SHALL BE RESPONSIBLE FOR MAINTAINING THE BARRICADES TO PREVENT TRAFFIC FROM USING THE DRIVEWAYS DURING THIS PERIOD.

**STREET SWEEPING AND PREPARATION**

THE CONTRACTOR SHALL BE RESPONSIBLE FOR SWEEPING AND CLEANING STREETS OF ANY DEBRIS AND MATERIAL THAT HAS ACCUMULATED AS A RESULT OF THE CONSTRUCTION ACTIVITY. A MECHANICAL SWEEPER, MECHANICALLY DRIVEN AIR AND HANDWORK WITH SHOVEL AND BROOM SHALL BE UTILIZED TO PROVIDE A CLEAN STREET FOR THE MOTORING PUBLIC. WITHIN 24 HOURS OF PLACING PRIME COAT AND THE LAYING OF HMA, THE CONTRACTOR SHALL SWEEP THE PAVEMENT AND REMOVE STANDING WATER, EARTH, WEEDS, LEAVES, DIRT, CONSTRUCTION DEBRIS AND ALL LOOSE MATERIAL.

**HIGHWAY STANDARDS:**

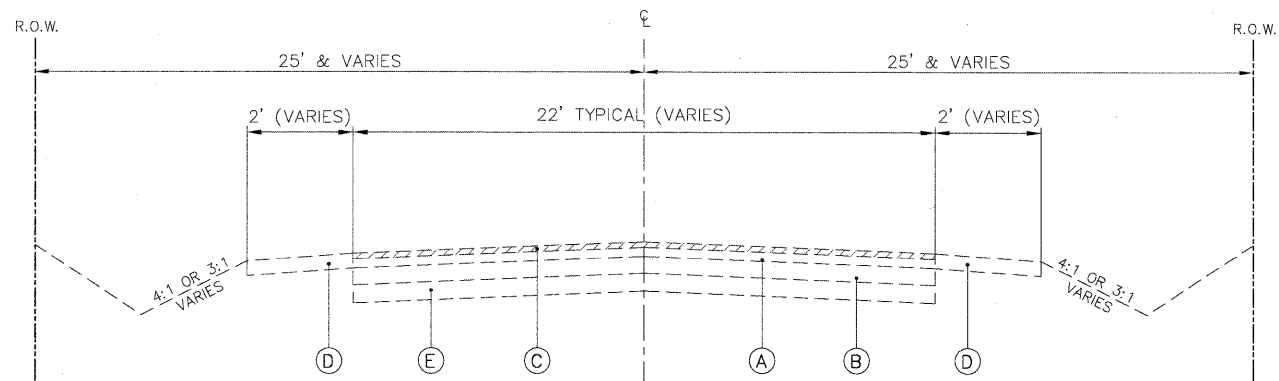
000001-05 STANDARD SYMBOLS, ABBREVIATIONS, AND PATTERNS  
 442201-03 CLASS C AND D PATCHES  
 701301-03 LANE CLOSURE, 2L, 2W, SHORT TIME OPERATIONS  
 701311-03 LANE CLOSURE, 2L, 2W, MOVING OPERATIONS--DAY ONLY  
 701501-05 URBAN LANE CLOSURE, 2L, 2W, UNDIVIDED  
 701901-01 TRAFFIC CONTROL DEVICES  
 780001-02 TYPICAL PAVEMENT MARKINGS

**SUMMARY OF QUANTITIES**

				ROADWAY	
				100% FEDERAL	
ITEM	PAYCODE	DESCRIPTION	UNIT	1000	
1.	20101700	SUPPLEMENTAL WATERING	UNIT	6	
2.	20201200	REMOVAL AND DISPOSAL OF UNSUITABLE MATERIAL	CU YD	102	
3.	21101600	TOPSOIL FURNISH AND PLACE, VARIABLE DEPTH	SQ YD	820	
4.	21400100	GRADING AND SHAPING DITCHES	FOOT	1000	
5.	25000110	SEEDING, CLASS 1A	ACRE	0.33	
6.	25000400	NITROGEN FERTILIZER NUTRIENT	POUND	31	
7.	25000500	PHOSPHORUS FERTILIZER NUTRIENT	POUND	31	
8.	25000600	POTASSIUM FERTILIZER NUTRIENT	POUND	31	
9.	25100630	EROSION CONTROL BLANKET	SQ YD	1640	
10.	31101000	SUB-BASE GRANULAR MATERIAL, TYPE B	TON	197	
11.	35101600	AGGREGATE BASE COURSE, TYPE B 4"	SQ YD	40	
12.	40300100	BITUMINOUS MATERIALS (PRIME COAT)	GALLON	1845	
13.	40600300	AGGREGATE (PRIME COAT)	TON	74	
14.	40600625	LEVELING BINDER, MACHINE METHOD, N50	TON	1061	
15.	40600982	HOT-MIX ASPHALT SURFACE REMOVAL - BUTT JOINT	SQ YD	500	
16.	40603310	HOT-MIX ASPHALT SURFACE COURSE, MIX "C", N50	TON	2276	
17.	44000157	HOT-MIX ASPHALT SURFACE REMOVAL, 2"	SQ YD	18452	
18.	44000200	DRIVEWAY PAVEMENT REMOVAL	SQ YD	517	
19.	44201713	CLASS D PATCHES, TYPE I, 6 INCH	SQ YD	4	
20.	44201717	CLASS D PATCHES, TYPE II, 6 INCH	SQ YD	16	
21.	44201721	CLASS D PATCHES, TYPE III, 6 INCH	SQ YD	30	
22.	44201723	CLASS D PATCHES, TYPE IV, 6 INCH	SQ YD	231	
23.	44300100	AREA REFLECTIVE CRACK CONTROL TREATMENT	SQ YD	18452	
24.	48102100	AGGREGATE WEDGE SHOULDER, TYPE B	TON	350	
25.	67100100	MOBILIZATION	L SUM	1	
26.	70102620	TRAFFIC CONTROL AND PROTECTION, STANDARD 701501	L SUM	1	
27.	70300100	SHORT-TERM PAVEMENT MARKING	FOOT	2619	
28.	70301000	WORK ZONE PAVEMENT MARKING REMOVAL	SQ FT	291	
* 29.	78000100	THERMOPLASTIC PAVEMENT MARKING - LETTERS AND SYMBOLS	SQ FT	41.6	
* 30.	78000200	THERMOPLASTIC PAVEMENT MARKING - LINE 4"	FOOT	14730	
* 31.	78000650	THERMOPLASTIC PAVEMENT MARKING - LINE 24"	FOOT	100	
* 32.	78100100	RAISED REFLECTIVE PAVEMENT MARKER	EACH	14	
33.	X0322256	TEMPORARY INFORMATION SIGNAGE	SQ FT	52	

\* - INDICATES SPECIALTY ITEM

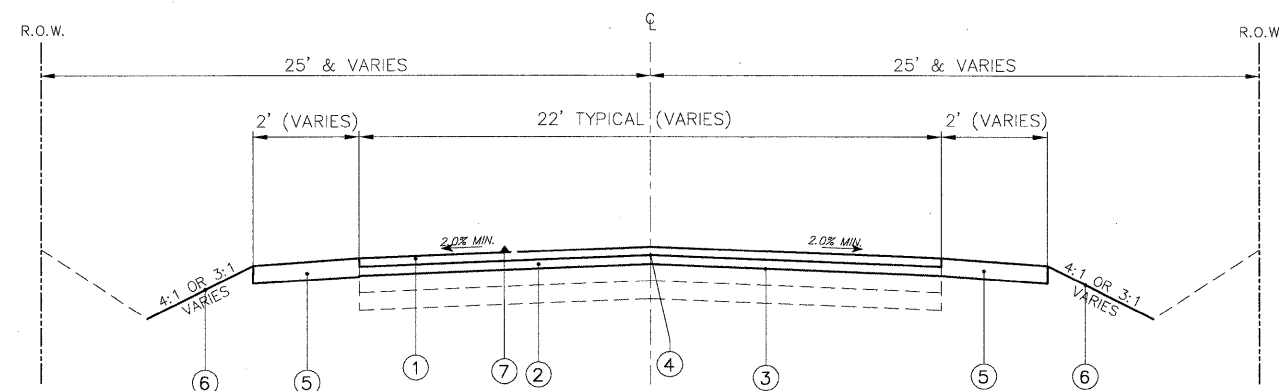
FILE NAME = 9770-263_Saunders.dwg	USER NAME =	DESIGNED - BVS DRAWN - BVS	REVISED - 10/16/09 REVISED - 10/22/09	<b>VILLAGE OF RIVERWOODS 2009 LAPP RESURFACING PROGRAM</b>	<b>GENERAL NOTES AND SUMMARY OF QUANTITIES</b>	F.A.J. RTE. 2416	SECTION 09-0005-00-RS	COUNTY 097(LAKE)ILK	TOTAL SHEETS 10	SHEET NO. 2	
	PLOT SCALE = N.T.S.	CHECKED - PJG				CONTRACT NO. 63395		ILLINOIS FED. AID PROJECT			
	PLOT DATE = 8/3/09	DATE - 8/3/09				SCALE: NONE	SHEET NO. 2 OF 10 SHEETS	STA.	TO STA.		



**EXISTING TYPICAL CROSS SECTION**  
 SAUNDERS ROAD (FAU ROUTE 2416)  
 STA. 1+24 (RIVERWOODS ROAD) TO STA. 77+51.5 (DUFFY LANE)

**EXISTING LEGEND**

- (A) EXISTING HMA PAVEMENT, 5"-7" & VARIES
- (B) EXISTING AGGREGATE BASE, TYPE B, 8"-12" & VARIES
- (C) HOT-MIX ASPHALT SURFACE REMOVAL, 2"
- (D) EXISTING AGGREGATE SHOULDER
- (E) EXISTING SUBBASE



**PROPOSED TYPICAL CROSS SECTION**  
 SAUNDERS ROAD (FAU ROUTE 2416)  
 STA. 1+24 (RIVERWOODS ROAD) TO STA. 77+51.5 (DUFFY LANE)

**PROPOSED LEGEND**

- ① HOT-MIX ASPHALT SURFACE COURSE, MIX "C", N50, 2"
- ② LEVELING BINDER (MACHINE METHOD), N50, 1"
- ③ BITUMINOUS MATERIALS (PRIME COAT) AND AGGREGATE (PRIME COAT)
- ④ AREA REFLECTIVE CONTROL TREATMENT, SYSTEM A
- ⑤ AGGREGATE SHOULDER, 2", TO BE REPAIRED AS NEEDED
- ⑥ RESTORATION
- ⑦ BLUE RAISED REFLECTIVE PAVEMENT MARKER (AT FIRE HYDRANTS. SEE DETAIL)

**NOTES:**

- HOT-MIX ASPHALT SURFACE COURSE, MIX C, N50, SHALL BE PLACED AT A THICKNESS OF 2" AS DIRECTED BY ENGINEER.
- DRIVEWAY PAVEMENT TO BE REMOVED AND REPLACED AS MARKED IN THE FIELD BY THE ENGINEER.
- THE INTENTION OF DRIVEWAY REMOVAL AND REPLACEMENT IS TO TRANSITION FROM PROPOSED PAVEMENT ELEVATION TO EXISTING DRIVEWAY PAVEMENT ELEVATION.
- LEVELING BINDER (MACHINE METHOD), N50 SHALL BE PLACED AT A MAXIMUM THICKNESS OF 1" FOR THE PURPOSE OF BRINGING THE CROSS SECTION TO THE DESIRED PROFILE AS DIRECTED BY THE ENGINEER.
- CLASS D PATCHES, INCLUDES REMOVAL OF SURFACE COURSE AND BINDER OR SUBBASE TO A TOTAL DEPTH OF 6" AS MARKED BY THE ENGINEER AND REPLACED WITH HMA AND PROPERLY PREPARED TO ACCEPT THE FINAL LIFT OF HMA SURFACE COURSE.
- HMA SURFACE REMOVAL, BUTT JOINTS AND ROADWAY BUTT JOINTS SHALL CONSIST OF COLD MILLING BUTT JOINTS AS MARKED BY THE ENGINEER.
- LIMITS OF REMOVAL SHALL NOT EXTEND PAST THE PUBLIC RIGHT-OF-WAY.

NOTE: CONTRACTOR SHALL MILL BEFORE PATCHING

HOT-MIX ASPHALT MIXTURE REQUIREMENTS	
MIXTURE TYPE	AIR VOIDS @ N <sub>DES</sub>
<b>PAVEMENT RESURFACING</b>	
HOT-MIX ASPHALT SURFACE COURSE, MIX "C", N50 (IL 9.5 mm)	4% @ 50 Gyr.
LEVELING BINDER (MACHINE METHOD), IL 9.5 mm, N50	4% @ 50 Gyr.
<b>DRIVEWAYS</b>	
HOT-MIX ASPHALT SURFACE COURSE, MIX "C", N50 (IL 9.5 mm), 3"	4% @ 50 Gyr.
<b>PATCHING</b>	
CLASS D PATCHES (HMA BINDER IL-19 mm)	4% @ 70 Gyr.

Note: The unit weight used to calculate all HMA Mixture Quantities is 112Lbs/SqYd/in.  
 Note: The "AC TYPE" for polymerized HMA Mixes shall be "SBS/SBR PG 70-22" and for non-polymerized HMA the "AC TYPE" shall be "PG 64-22" unless modified by District One Special Provisions. For "PERCENT OF RAP" see District One Special Provisions.

FILE NAME =  
9770-263\_Sounders.dwg

USER NAME =  
PLOT SCALE = N.T.S.  
PLOT DATE = 8/3/09

DESIGNED - BVS  
DRAWN - BVS  
CHECKED - PJG  
DATE - 8/3/09

REVISED - 10/16/09  
REVISED - 10/22/09

**VILLAGE OF RIVERWOODS 2009 LAPP RESURFACING PROGRAM**

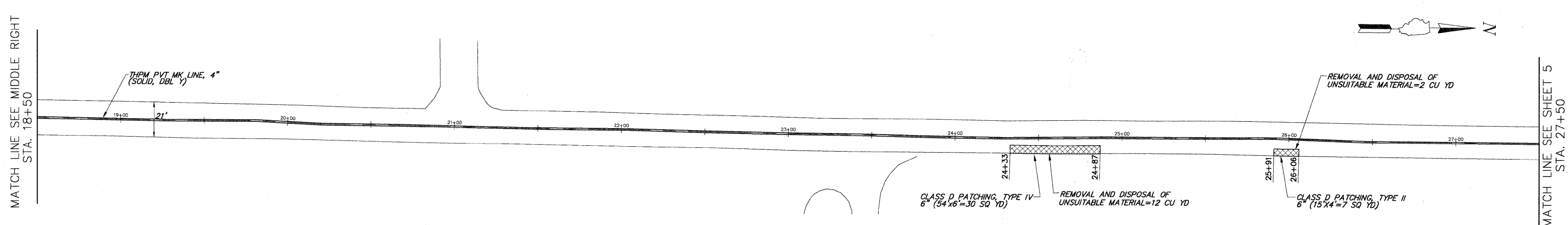
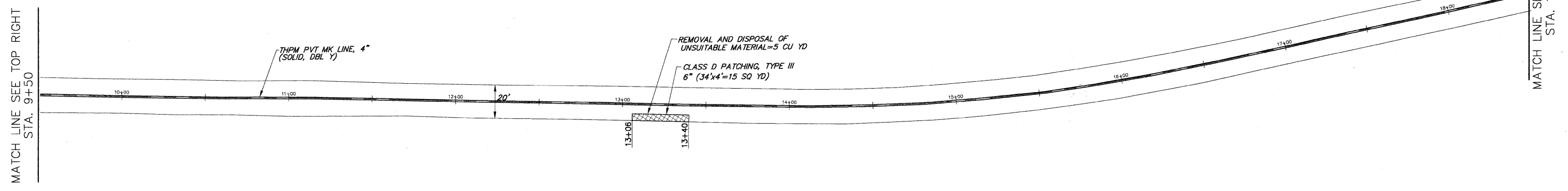
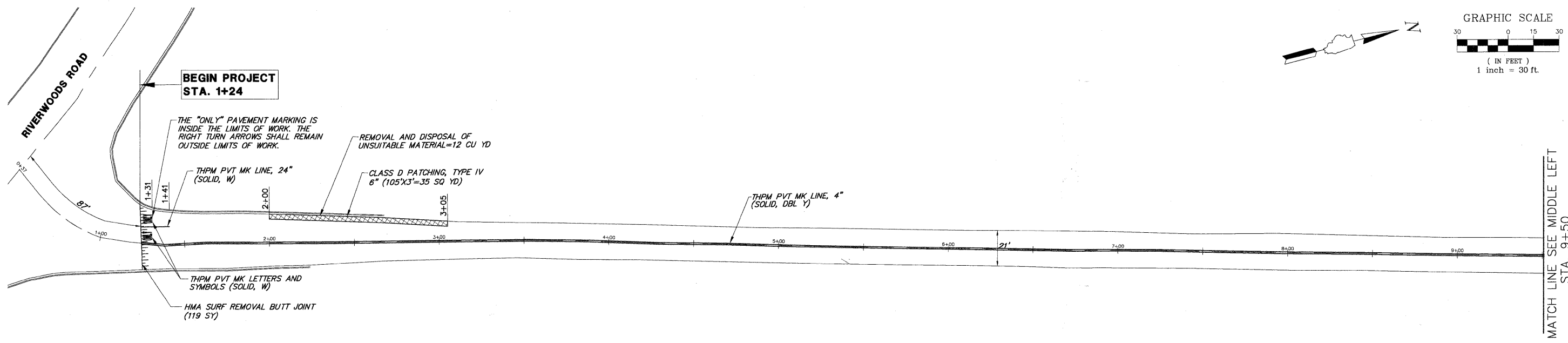
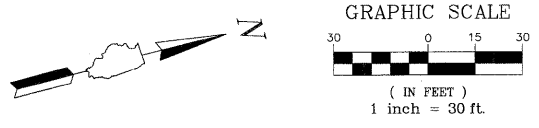
**TYPICAL SECTIONS**

F.A.U. RTE.	SECTION	COUNTY	TOTAL SHEETS	SHEET NO.
2416	09-00015-00-RS	097(LAKE/LK)	10	3

CONTRACT NO. 63395

SCALE: NONE SHEET NO. 3 OF 10 SHEETS STA. TO STA.

ILLINOIS FED. AID PROJECT



\*NOTE: FINAL PATCHING LOCATIONS AND DIMENSIONS TO BE DETERMINED BY THE ENGINEER IN THE FIELD.

FILE NAME = 9770-263\_Saunders.dwg  
 USER NAME =  
 PLOT SCALE = N.T.S.  
 PLOT DATE = 8/3/09

DESIGNED - BVS  
 DRAWN - BVS  
 CHECKED - PJG  
 DATE - 8/3/09

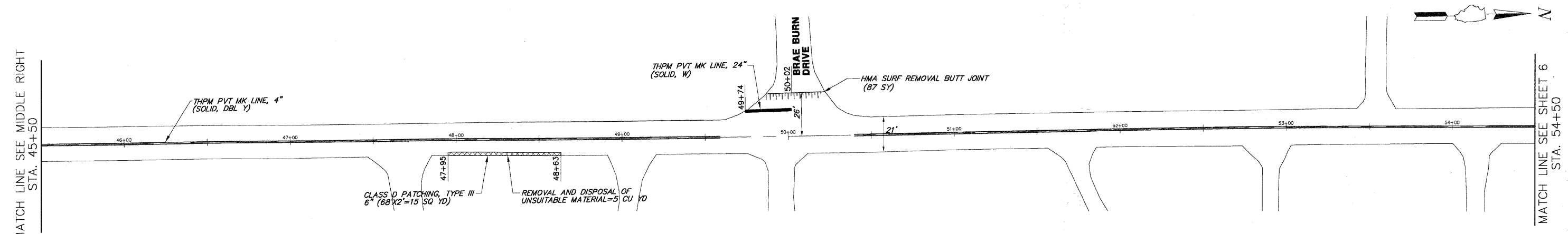
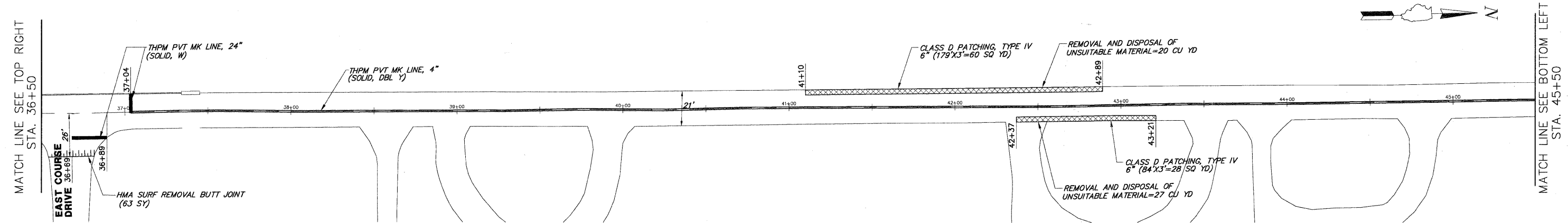
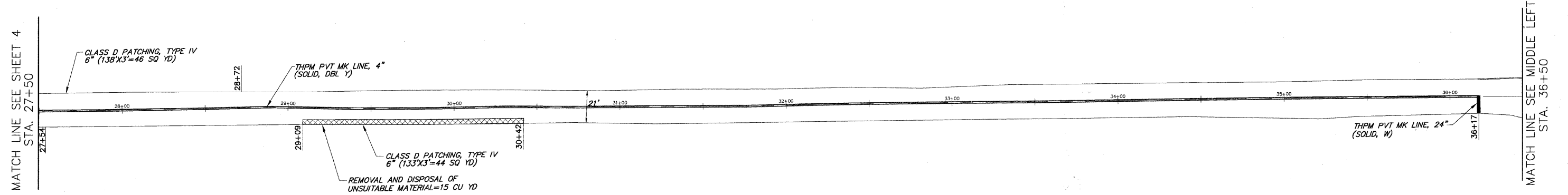
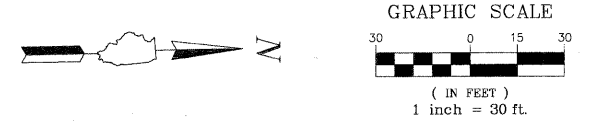
REVISED - 10/16/09

**VILLAGE OF RIVERWOODS 2009 LAPP RESURFACING PROGRAM**

**ROADWAY PLAN - SAUNDERS ROAD**

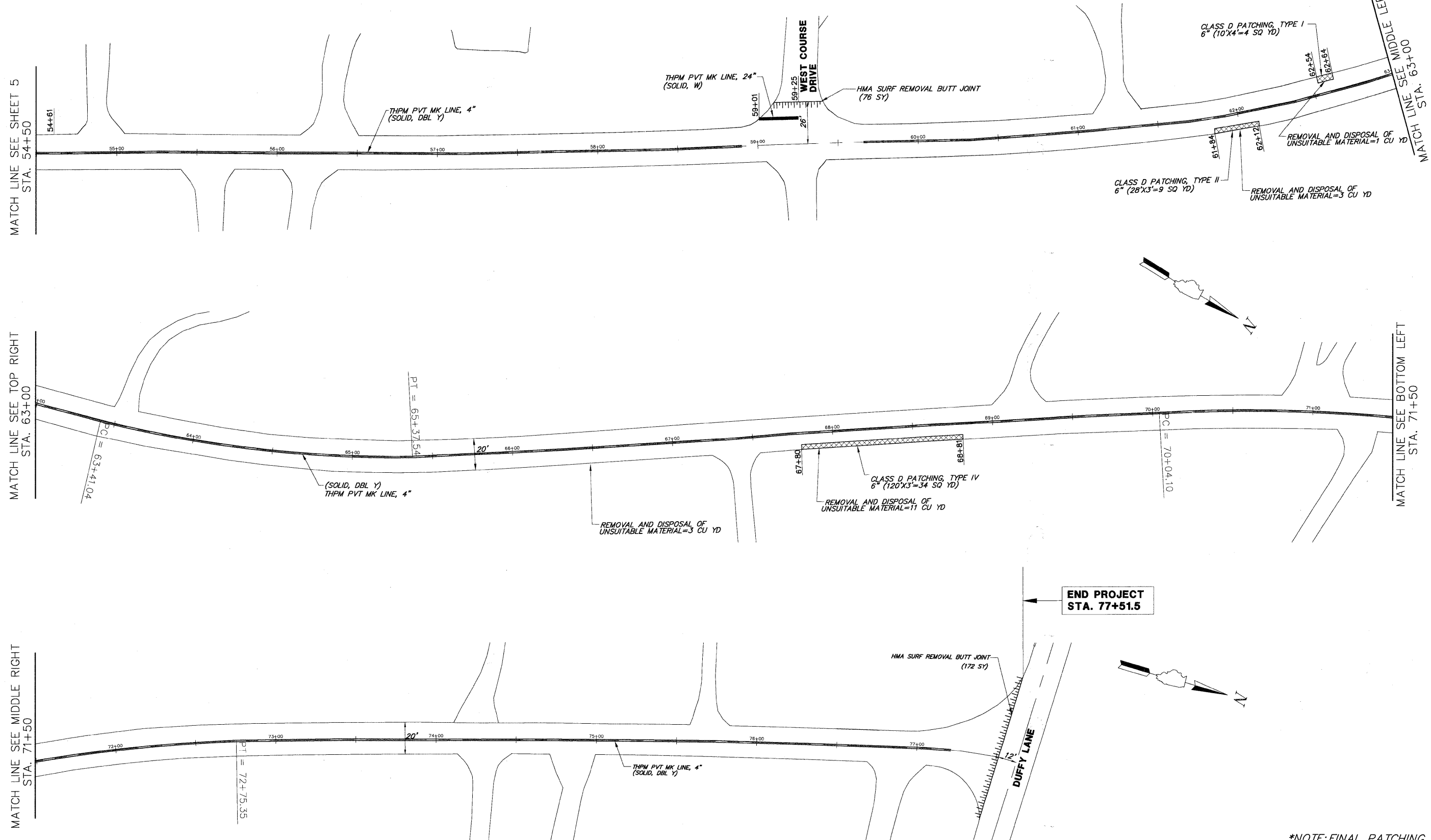
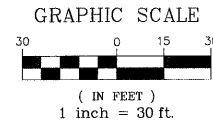
SCALE: 1"=30' SHEET NO. 4 OF 10 SHEETS STA. 1+24 TO STA. 27+50

F.A.U. RTE.	SECTION	COUNTY	TOTAL SHEETS	SHEET NO.
2416	09-00015-00-RS	097(LAKE)LK	10	4
CONTRACT NO. 63395				
ILLINOIS FED. AID PROJECT				



\*NOTE: FINAL PATCHING LOCATIONS AND DIMENSIONS TO BE DETERMINED BY THE ENGINEER IN THE FIELD.

FILE NAME = 9770-263_Saunders.dwg	USER NAME =	DESIGNED - BVS	REVISED - 10/16/09	<b>VILLAGE OF RIVERWOODS 2009 LAPP RESURFACING PROGRAM</b>	<b>ROADWAY PLAN - SAUNDERS ROAD</b>		F.A.U. RTE. 2416	SECTION 09-00015-00-RS	COUNTY 097(LAKE)LK	TOTAL SHEETS 10	SHEET NO. 5	
	PLOT SCALE = N.T.S.	CHECKED - PJG			SCALE: 1"=30'	SHEET NO. 5 OF 10 SHEETS	STA. 27+50 TO STA. 54+50	CONTRACT NO. 63395		ILLINOIS FED. AID PROJECT		
	PLOT DATE = 8/3/09	DATE - 8/3/09										



MATCH LINE SEE SHEET 5  
STA. 54+50

MATCH LINE SEE TOP RIGHT  
STA. 63+00

MATCH LINE SEE MIDDLE RIGHT  
STA. 71+50

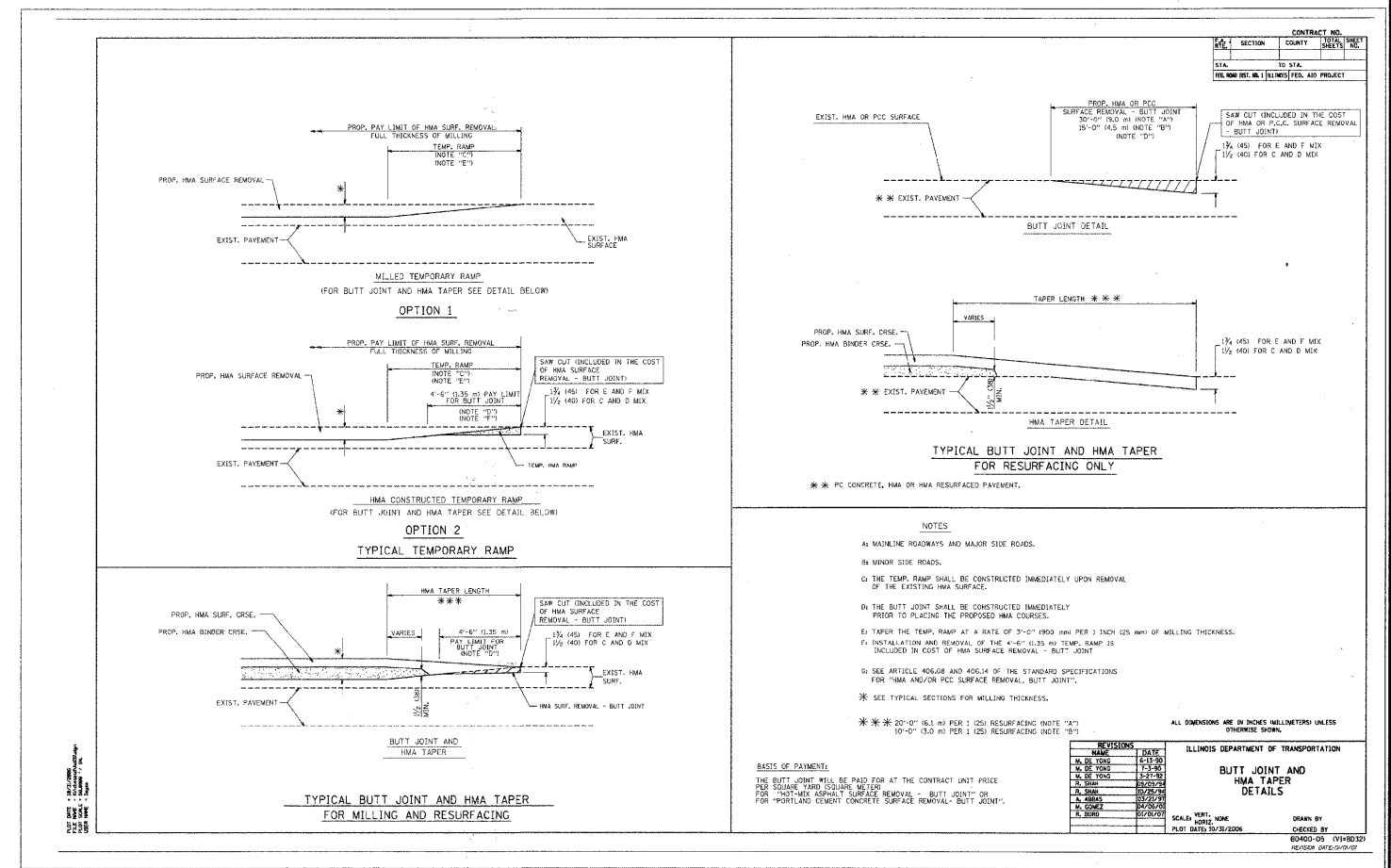
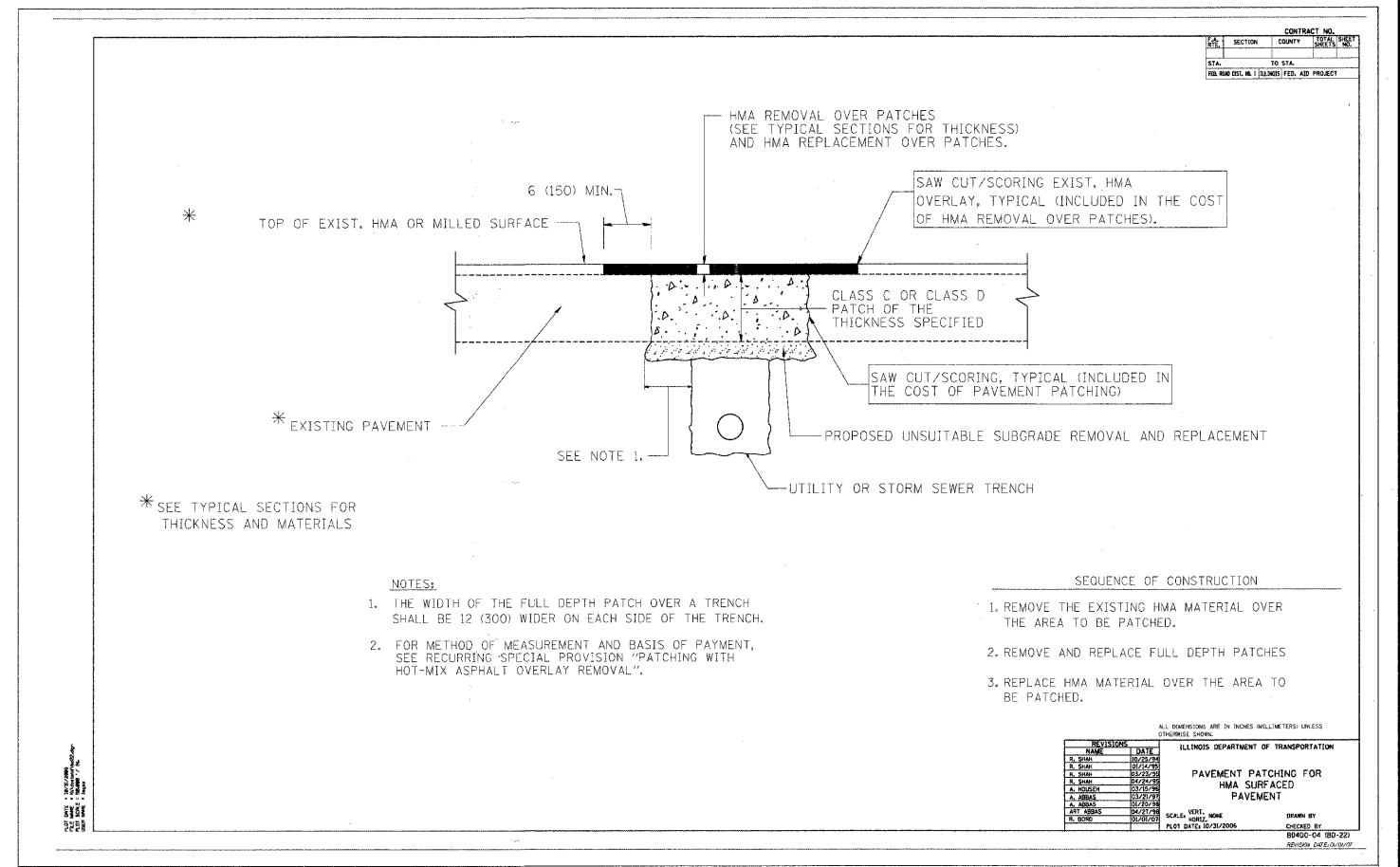
MATCH LINE SEE BOTTOM LEFT  
STA. 71+50

MATCH LINE SEE MIDDLE LEFT  
STA. 63+00

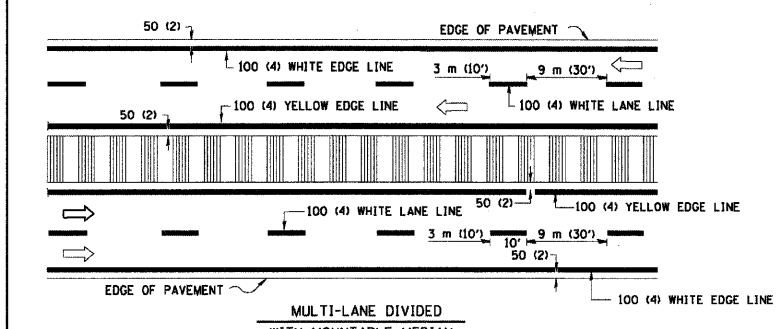
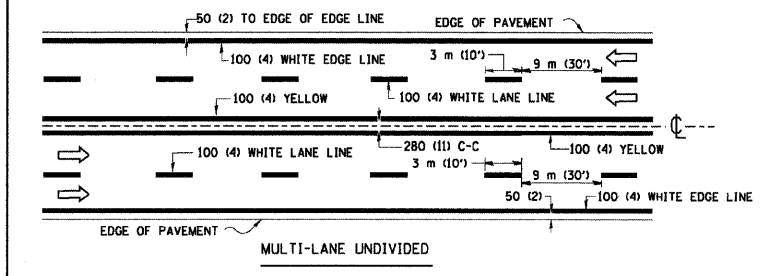
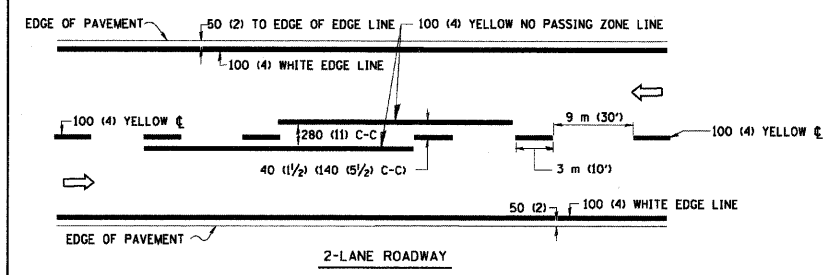
END PROJECT  
STA. 77+51.5

\*NOTE: FINAL PATCHING LOCATIONS AND DIMENSIONS TO BE DETERMINED BY THE ENGINEER IN THE FIELD.

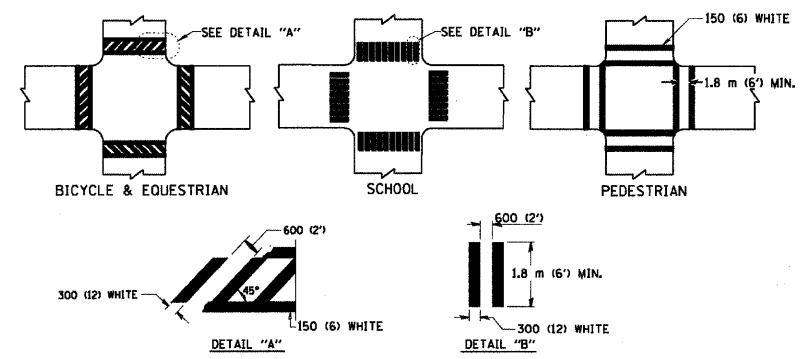
FILE NAME = 9770-263_Saunders.dwg	USER NAME =	DESIGNED - BVS	REVISED - 10/16/09	<b>VILLAGE OF RIVERWOODS 2009 LAPP RESURFACING PROGRAM</b>	<b>ROADWAY PLAN - SAUNDERS ROAD</b>		F.A.U. RTE. 2416	SECTION 09-00015-00-RS	COUNTY 097(LAKE)LK	TOTAL SHEETS 10	SHEET NO. 6
	PLOT SCALE = N.T.S.	DRAWN - BVS			SCALE: 1"=30'	SHEET NO. 6 OF 10 SHEETS	STA. 54+50 TO STA. 77+51.5	CONTRACT NO. 63395		ILLINOIS FED. AID PROJECT	
	PLOT DATE = 8/3/09	CHECKED - PJG									
		DATE - 8/3/09									



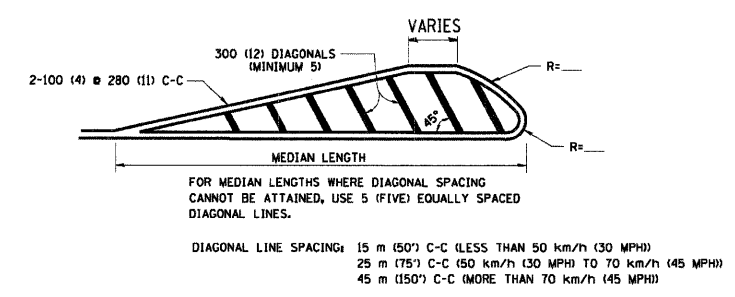
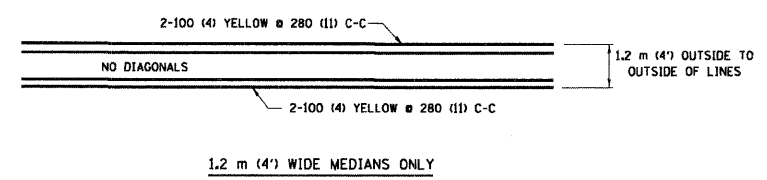
CONTRACT NO.				
F.A. RTE.	SECTION	COUNTY	TOTAL SHEETS	SHEET NO.
STA.	TO STA.			
FED. ROAD DIST. NO.	ILLINOIS	FED. AID PROJECT		



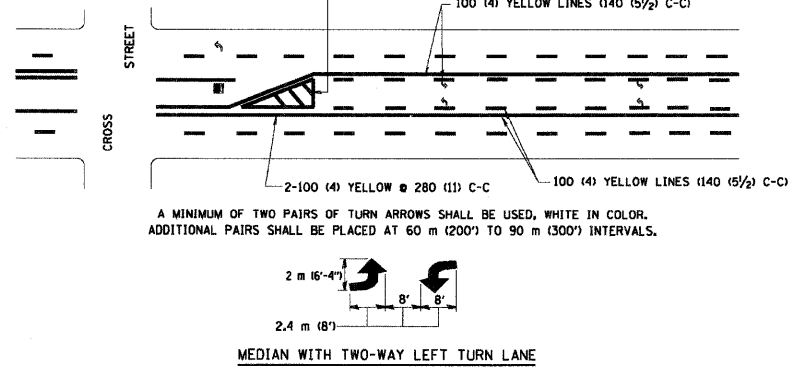
TYPICAL LANE AND EDGE LINE MARKING



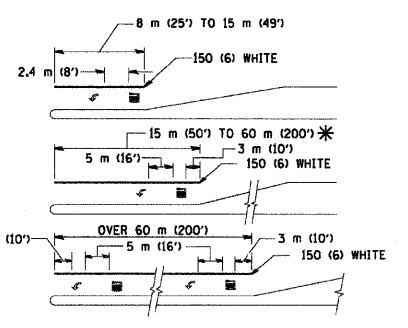
TYPICAL CROSSWALK MARKING



TYPICAL PAINTED MEDIAN MARKING

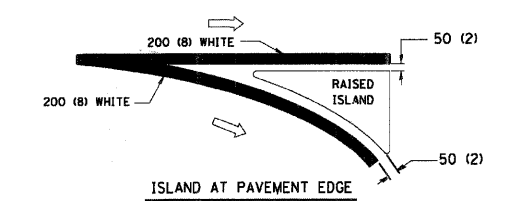
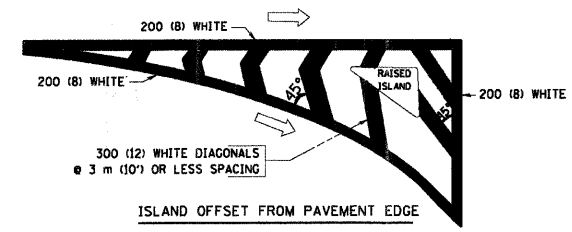


TYPICAL PAINTED MEDIAN MARKING



FULL SIZE LETTERS 2.4 m (8') AND ARROWS SHALL BE USED.  
 \* TURN LANES IN EXCESS OF 120 m (400') IN LENGTH MAY HAVE AN ADDITIONAL SET OF ARROW - "ONLY" INSTALLED MIDWAY BETWEEN THE OTHER TWO SETS OF ARROW - "ONLY".

TYPICAL LEFT (OR RIGHT) TURN LANE



TYPICAL ISLAND MARKING

TYPE OF MARKING	WIDTH OF LINE	PATTERN	COLOR	SPACING / REMARKS
CENTERLINE ON 2 LANE PAVEMENT	100 (4)	SKIP-DASH	YELLOW	3 m (10') LINE WITH 9 m (30') SPACE
CENTERLINE ON MULTI-LANE UNDIVIDED PAVEMENT	2 @ 100 (4)	SOLID	YELLOW	280 (11) C-C
NO PASSING ZONE LINES: FOR ONE DIRECTION	100 (4)	SOLID	YELLOW	140 (5 1/2) C-C FROM SKIP-DASH CENTERLINE
NO PASSING ZONE LINES: FOR BOTH DIRECTIONS	2 @ 100 (4)	SOLID	YELLOW	280 (11) C-C OMIT SKIP-DASH CENTERLINE BETWEEN
LANE LINES	100 (4)	SKIP-DASH	WHITE	3 m (10') LINE WITH 9 m (30') SPACE
LANE LINES FOR ONE DIRECTION	125 (5) ON FREEWAYS	SKIP-DASH	WHITE	
LANE LINES FOR BOTH DIRECTIONS	125 (5) ON FREEWAYS	SKIP-DASH	WHITE	
LANE LINES FOR ONE DIRECTION	125 (5) ON FREEWAYS	SKIP-DASH	WHITE	
LANE LINES FOR BOTH DIRECTIONS	125 (5) ON FREEWAYS	SKIP-DASH	WHITE	
DOTTED LINES (EXTENSIONS OF CENTER, LANE OR TURN LANE MARKINGS)	SAME AS LINE BEING EXTENDED	SKIP-DASH	SAME AS LINE BEING EXTENDED	600 (2') LINE WITH 1.8 m (6') SPACE
EDGE LINES	100 (4)	SOLID	YELLOW-LEFT WHITE-RIGHT	OUTLINE MOUNTABLE MEDIANS IN YELLOW. EDGE LINES ARE NOT USED NEXT TO BARRIER CURB
TURN LANE MARKINGS	150 (6) LINE, FULL SIZE LETTERS & SYMBOLS (2.4 m (8'))	SOLID	WHITE	SEE TYPICAL TURN LANE MARKING DETAIL
TWO WAY LEFT TURN MARKING	2 @ 100 (4) EACH DIRECTION	SKIP-DASH AND SOLID	YELLOW	3 m (10') LINE WITH 9 m (30') SPACE FOR SKIP-DASH 140 (5 1/2) C-C BETWEEN SOLID LINE AND SKIP-DASH LINE
TWO WAY LEFT TURN MARKING	2.4 m (8') LEFT ARROW	IN PAIRS	WHITE	SEE TYPICAL TWO-WAY LEFT TURN MARKING DETAIL
CROSSWALK LINES (PEDESTRIAN A. DIAGONALS (BIKE & EQUESTRIAN) B. LONGITUDINAL BARS (SCHOOL))	2 @ 150 (6) 300 (12) @ 45° 300 (12) @ 90°	SOLID	WHITE WHITE WHITE	NOT LESS THAN 1.8 m (6') APART 600 (2') APART 600 (2') APART SEE TYPICAL CROSSWALK MARKING DETAILS.
STOP LINES	600 (24)	SOLID	WHITE	PLACE 1.2 m (4') IN ADVANCE OF AND PARALLEL TO CROSSWALK, IF PRESENT. OTHERWISE, PLACE AT DESIRED STOPPING POINT, PARALLEL TO CROSSROAD CENTERLINE, WHERE POSSIBLE
PAINTED MEDIANS	2 @ 100 (4) WITH 300 (12) DIAGONALS @ 45°	SOLID	YELLOW: TWO WAY TRAFFIC WHITE: ONE WAY TRAFFIC	280 (11) C-C FOR THE DOUBLE LINE SEE TYPICAL PAINTED MEDIAN MARKING.
GORE MARKING AND CHANNELIZING LINES	200 (8) WITH 300 (12) DIAGONALS @ 45°	SOLID	WHITE	DIAGONALS: 4.5 m (15') C-C (LESS THAN 50 km/h (30 MPH)) 6 m (20') C-C (50 km/h (30 MPH) TO 70 km/h (45 MPH)) 9 m (30') C-C (OVER 70 km/h (45 MPH))
RAILROAD CROSSING	600 (24) TRANSVERSE LINES: "RR" 15 1.8 m (6') LETTERS: 400 (16) LINE FOR "X"	SOLID	WHITE	SEE STATE STANDARD 780001 AREA OF: "R"=0.33m² (3.6 SQ. FT.) EACH "X"=5.0 m² (54.0 SQ. FT.)
SHOULDER DIAGONALS	300 (12) @ 45°	SOLID	WHITE - RIGHT YELLOW - LEFT	15 m (50') C-C (LESS THAN 50 km/h (30 MPH)) 25 m (75') C-C (50 km/h (30 MPH) TO 70 km/h (45 MPH)) 45 m (150') C-C (OVER 70 km/h (45 MPH))

FOR FURTHER DETAILS ON PAVEMENT MARKING REFER TO STANDARD SPECIFICATIONS FOR ROAD AND BRIDGE CONSTRUCTION AND STATE STANDARD 780001.

All dimensions are in millimeters (inches) unless otherwise shown.

REVISIONS	NAME	DATE
1	EVERS	03-19-90
2	T. RAMMACHER	10-27-94
3	ALEX HOUSEH	10-09-96
4	ALEX HOUSEH	10-17-96
5	T. RAMMACHER	01-06-00

ILLINOIS DEPARTMENT OF TRANSPORTATION  
 DISTRICT ONE  
 TYPICAL PAVEMENT MARKINGS

SCALE: NONE  
 DATE: 2/15/2006  
 DRAWN BY CADD  
 CHECKED BY  
 TC-13  
 REVISION DATE: 01/06/00

PLOT DATE = 2/16/2006  
 PLOT SCALE = 0.0000 / IN.  
 USER NAME = gplanner

FILE NAME = 9770-263\_Sounders.dwg

USER NAME =	DESIGNED - BVS	REVISED - 10/16/09
PLOT SCALE = N.T.S.	DRAWN - BVS	
PLOT DATE = 8/3/09	CHECKED - PJG	
	DATE - 8/3/09	

VILLAGE OF RIVERWOODS 2009 LAPP RESURFACING PROGRAM

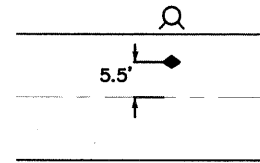
SCALE: NONE	SHEET NO. 8 OF 10 SHEETS	STA. TO STA.
-------------	--------------------------	--------------

F.A.U. RTE.	SECTION	COUNTY	TOTAL SHEETS	SHEET NO.
2416	09-00015-00-RS	097(LAKE)ILK	10	8
ILLINOIS FED. AID PROJECT				CONTRACT NO. 63395



CONTRACT NO.			
F.A. RTE.	SECTION	COUNTY	TOTAL SHEET NO.
STA.	TO STA.		
FED. ROAD DIST. NO.	ILLINOIS	FED. AID PROJECT	

TYPICAL APPLICATIONS  
RAISED REFLECTIVE MARKERS (SNOW-PLOW RESISTANT)



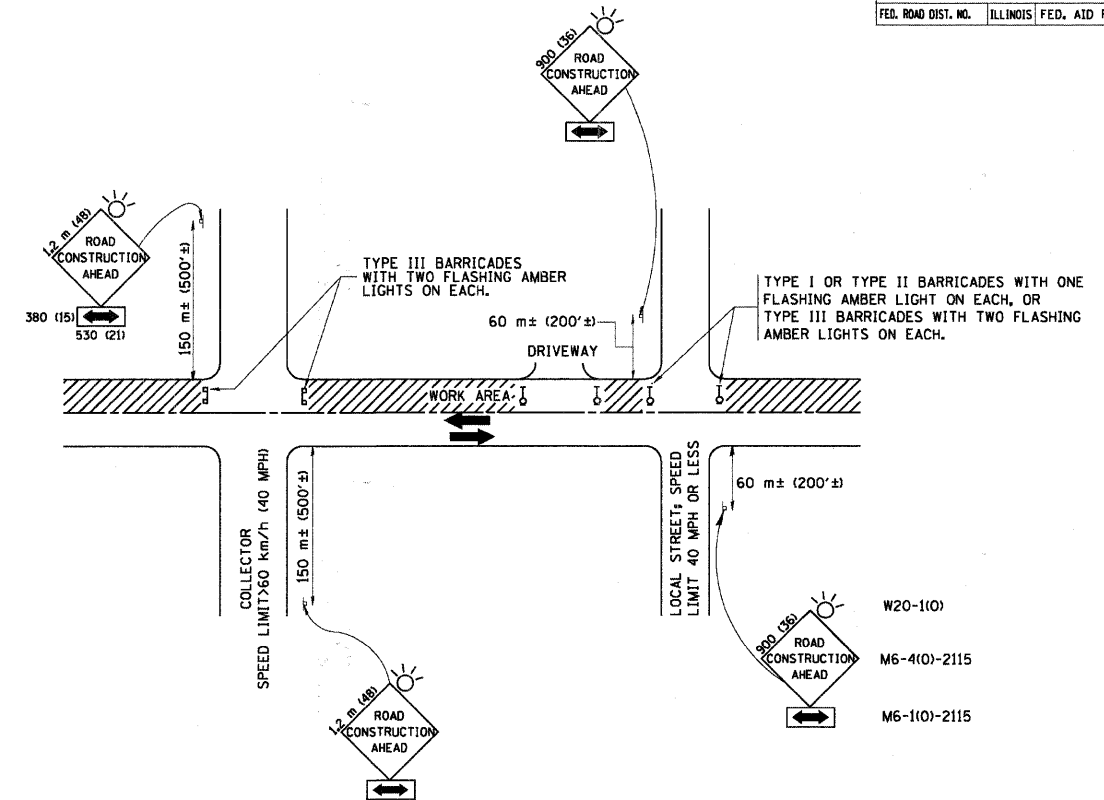
TWO-LANE/TWO-WAY  
FIRE HYDRANT LOCATION

SYMBOLS

- CENTER LINE
- ◆ TWO-WAY BLUE MARKER
- ⊙ FIRE HYDRANT

RAISED REFLECTIVE PAVEMENT MARKER DETAIL

PLOT DATE = 2/10/2006  
FILE NAME = m:\villageofriverwoods\lapp\resurfacing.dwg  
USER NAME = jpsanders



TRAFFIC CONTROL AND PROTECTION FOR SIDE ROADS, INTERSECTIONS, AND DRIVEWAYS

NOTES:

A. FOR NO LANE RESTRICTION ON THE SIDE ROAD OR DRIVEWAYS

1. SIDE ROAD WITH A SPEED LIMIT OF 60 km/h (40 MPH) OR LESS AS SHOWN ON THE DRAWING AND AS DIRECTED BY THE ENGINEER:
  - a) ONE ROAD CONSTRUCTION AHEAD SIGN 900x300 (36x36) WITH A FLASHER AND FLAG MOUNTED ON IT APPROXIMATELY 60 m (200') IN ADVANCE OF THE MAIN ROUTE.
  - b) THE CLOSED PORTION OF THE MAIN ROUTE SHALL BE PROTECTED BY BLOCKING WITH TYPE I, TYPE II OR TYPE III BARRICADES, 1/3 OF THE CROSS SECTION OF THE CLOSED PORTION.
2. SIDE ROAD WITH A SPEED LIMIT GREATER THAN 60 km/h (40 MPH) AS SHOWN ON THE DRAWING AND AS DIRECTED BY THE ENGINEER:
  - a) ONE ROAD CONSTRUCTION AHEAD SIGN 1.2 m x 1.2 m (48x48) WITH A FLASHER MOUNTED ON IT APPROXIMATELY 150 m (500') IN ADVANCE OF THE MAIN ROUTE.
  - b) THE CLOSED PORTION OF THE MAIN ROUTE SHALL BE PROTECTED BY BLOCKING WITH TYPE III BARRICADES, 1/2 OF THE CROSS SECTION OF THE CLOSED PORTION.
3. WHEN THE SIDE ROAD LIES BETWEEN THE BEGINNING OF THE MAINLINE SIGNING AND THE WORK ZONE, A SINGLE HEADED ARROW (M6-1) SHALL BE USED IN LIEU OF THE DOUBLE HEADED ARROW (M6-4).

B. FOR A LANE CLOSURE ON A SIDE ROAD OR DRIVEWAY:

USE APPLICABLE PORTIONS OF THE TYPICAL APPLICATION OF TRAFFIC CONTROL DEVICES (STD. 701501, STD. 701606 OR THE APPROPRIATE STANDARD). THE SPACING OF SIGNS AND BARRICADES SHALL BE ADJUSTED FOR FIELD CONDITIONS AS DIRECTED BY THE ENGINEER. THE DIRECTIONAL ARROW SHALL BE COVERED OR REMOVED WHEN NO LONGER CONSISTENT WITH THE SIDE ROAD LANE CLOSURE.

C. ADVANCE WARNING SIGNS ARE TO BE OMITTED ON DRIVEWAY UNLESS OTHERWISE NOTED.

D. THE TRAFFIC CONTROL AND PROTECTION FOR SIDE ROADS, INTERSECTIONS, AND DRIVEWAYS SHALL BE INCIDENTAL TO THE COST OF SPECIFIED TRAFFIC CONTROL STANDARDS OR ITEMS.

REVISIONS	
NAME	DATE
LHA	6/89
T. RAMMACHER	09/08/94
J. OBERLE	10/18/95
A. HOUSEH	03/06/96
A. HOUSEH	10/15/96
T. RAMMACHER	01/06/00

ILLINOIS DEPARTMENT OF TRANSPORTATION  
TRAFFIC CONTROL AND PROTECTION  
FOR  
SIDE ROADS, INTERSECTIONS, AND  
DRIVEWAYS

SCALE:  
DATE: 2/15/2006

DRAWN BY  
CHECKED BY  
TC-10  
REVISION DATE: 01/06/00

FILE NAME =  
9770-263\_Saunders.dwg

USER NAME =  
PLOT SCALE = N.T.S.  
PLOT DATE = 8/3/09

DESIGNED - BVS  
DRAWN - BVS  
CHECKED - PJG  
DATE - 8/3/09

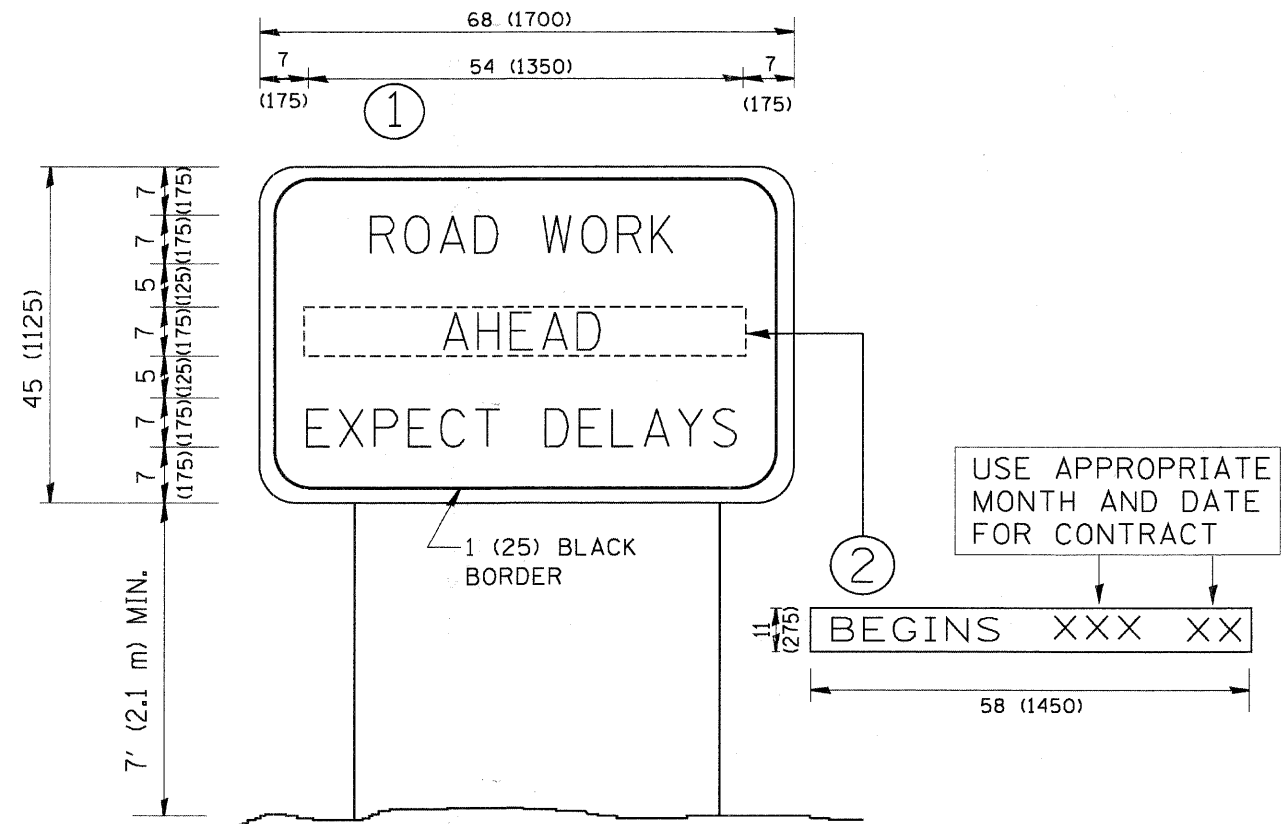
REVISED - 10/16/09

VILLAGE OF RIVERWOODS 2009 LAPP  
RESURFACING PROGRAM

DETAILS

SCALE: NONE SHEET NO. 9 OF 10 SHEETS STA. TO STA.

F.A. RTE.	SECTION	COUNTY	TOTAL SHEETS	SHEET NO.
2416	09-00015-00-RS	097(LAKE)K	10	9
CONTRACT NO. 63395				
ILLINOIS FED. AID PROJECT				



**NOTES:**

1. USE BLACK LETTERING ON ORANGE BACKGROUND.
2. ERECT SIGNS IN ADVANCE OF THE LOCATION FOR THE "ROAD CONSTRUCTION AHEAD" SIGN AT LOCATIONS AS DIRECTED BY THE ENGINEER.
3. ERECT SIGN ① WITH INSTALLED PANEL ② ONE WEEK PRIOR TO THE START OF CONSTRUCTION.
4. REMOVE PANEL ② SOON AFTER THE START OF CONSTRUCTION.
5. SEE SPECIAL PROVISION FOR "TEMPORARY INFORMATION SIGNING" FOR ADDITIONAL INFORMATION.
6. ONE SIGN ASSEMBLY EQUALS 25.70 SQ. FT. (2.3 SQ. M.)
7. SHALL BE PAID FOR AS TEMPORARY INFORMATION SIGNING.

ALL DIMENSIONS ARE IN INCHES (MILLIMETERS) UNLESS OTHERWISE SHOWN.

FILE NAME = W:\diststd\22x34\to22.dgn	USER NAME = gaglunobt	DESIGNED - DRAWN -	REVISOR - REVISOR -
		DESIGNED - DRAWN -	REVISOR - REVISOR -
		CHECKED - DATE -	REVISOR - REVISOR -
		CHECKED - DATE -	REVISOR - REVISOR -

**STATE OF ILLINOIS  
DEPARTMENT OF TRANSPORTATION**

ARTERIAL ROAD INFORMATION SIGN		F.A.A. RTE.	SECTION	COUNTY	TOTAL SHEETS	SHEET NO.
SCALE: NONE	SHEET NO. 1 OF 1 SHEETS	STA.	TO STA.	TC-22	CONTRACT NO.	
FED. ROAD DIST. NO. 1 ILLINOIS FED. AID PROJECT						

FILE NAME = 9770-263_Saunders.dwg	USER NAME =	DESIGNED - DRAWN -	REVISOR - REVISOR -
		DESIGNED - DRAWN -	REVISOR - REVISOR -
		CHECKED - DATE -	REVISOR - REVISOR -
		CHECKED - DATE -	REVISOR - REVISOR -

**VILLAGE OF RIVERWOODS 2009 LAPP  
RESURFACING PROGRAM**

DETAILS		F.A.A. RTE.	SECTION	COUNTY	TOTAL SHEETS	SHEET NO.
SCALE: NONE	SHEET NO. 10 OF 10 SHEETS	STA.	TO STA.	09-00015-00-RS	10	10
ILLINOIS FED. AID PROJECT						

**CONTRACT NO. 63395**