

F.A.P. RTE.	SECTION	COUNTY	TOTAL SHEETS	SHEET NO.
650	104T-2	JO DAVIESS	53	1
FED. ROAD DIST. NO.	ILLINOIS	CONTRACT NO. 64C79		

INDEX OF SHEETS

- 1 COVER SHEET
- 2 - 3 SUMMARY OF QUANTITIES
- 4 - 5 GENERAL NOTES
- 6 - 11 TYPICAL SECTIONS
- 12 - 15 SCHEDULE OF QUANTITIES
- 16 EARTHWORK SCHEDULE
- 17 - 18 HORIZONTAL AND VERTICAL CONTROL
- 19 - 20 PLAN AND PROFILE SHEETS
- 21 - 22 STAGING DETAILS
- 23 - 24 R.O.W., EROSION CONTROL, AND SEEDING DETAILS
- 25 - 27 GRATED CULVERT EXTENSION DETAILS
- 28 TEMPORARY SHEET PILING DETAIL
- 29 - 30 SOIL BORING LOGS
- 31 HOT-MIX ASPHALT SHOULDERS (DIST STD 23.4a)
- 31 DELINEATOR AND POST (DIST STD 37.4)
- 31 TYPICAL BENCHING DETAIL ON EXISTING EMBANKMENT (DIST STD 50.4)
- 31 TREE REPLACEMENT SCHEDULE (DIST STD 90.4)
- 32 STOP LINE SIGN FOR TEMPORARY SIGNALS (DIST STD 99.4)
- 33 EROSION CONTROL DETAILS FOR SILT FENCE (DIST STD 29.2)
- 33 FIELD TILE JUNCTION VAULTS (DIST STD 30.2)
- 34 INFORMATIONAL WARNING SIGN (FOR NARROW TRAVEL LANES) (DIST STD 39.2)
- 34 WITNESS MARKER & PERMANENT SURVEY MARKERS, TYPE II (DIST STD 66.2)
- 35 ENTRANCE SIGN FOR USE WITH TEMPORARY SIGNALS (DIST STD 75.2)
- 35 NAME PLATE FOR CULVERTS (DIST STD 88.2)
- 36 STORM WATER POLLUTION PREVENTION PLAN EROSION CONTROL PLAN (DIST STD 2.1)
- 37 ENTRANCE AND SIDEROADS WITH 2.4m (8') HOT-MIX ASPHALT SHOULDERS (DIST STD 22.1)
- 38 - 40 TYPICAL PAVEMENT MARKINGS (DIST STD 41.1)
- 41 DETAILS OF PLANTING AND BRACING TREES (DIST STD 92.1)
- 42 - 53 CROSS SECTIONS

STATE OF ILLINOIS
DEPARTMENT OF TRANSPORTATION
DIVISION OF HIGHWAYS
PROPOSED
HIGHWAY PLANS

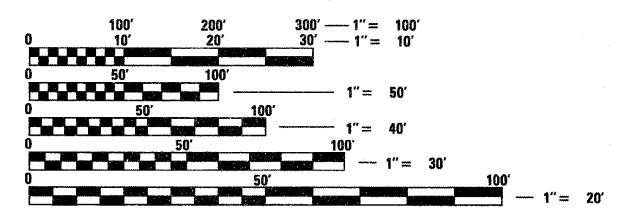
FAP ROUTE 650 (IL 78)
SECTION 104T-2
PROJECT ESP-065(008)
JO DAVIESS COUNTY

STATE STANDARDS

- 280001-05 TEMPORARY EROSION CONTROL SYSTEMS
- 420001-07 PAVEMENT JOINTS
- 442201-03 CLASS C AND D PATCHES
- 542401-01 METAL END SECTION FOR PIPE CULVERTS
- 635001-01 DELINEATORS
- 666001-01 RIGHT-OF-WAY MARKERS
- 701006-03 OFF-ROAD OPERATIONS, 2L, 2W, 4.5M (15') TO 600 MM (24") FROM PAVEMENT EDGE
- 701201-03 LANE CLOSURE, 2L, 2W, DAY ONLY, FOR SPEEDS > 45 MPH
- 701301-03 LANE CLOSURE, 2L, 2W, SHORT TIME OPERATIONS
- 701311-03 LANE CLOSURE, 2L, 2W, MOVING OPERATIONS - DAY ONLY
- 701321-10 LANE CLOSURE, 2L, 2W, BRIDGE REPAIR WITH BARRIER
- 701326-03 LANE CLOSURE, 2L, 2W, PAVEMENT WIDENING, FOR SPEEDS > 45MPH
- 701901-01 TRAFFIC CONTROL DEVICES
- 704001-06 TEMPORARY CONCRETE BARRIER
- 720011-01 METAL POSTS FOR SIGNS, MARKERS AND DELINEATORS
- 728001-01 TELESCOPING STEEL SIGN SUPPORT
- 729001-01 APPLICATIONS OF TYPES A AND B METAL POSTS (FOR SIGNS & MARKERS)
- 886001-01 DETECTOR LOOP INSTALLATIONS
- 886006-01 TYPICAL LAYOUT FOR DETECTION LOOPS
- 000001-05 STANDARD SYMBOLS, ABBREVIATIONS AND PATTERNS
- 001001-02 AREAS OF REINFORCEMENT BARS
- 001006 DECIMAL OF AN INCH AND OF A FOOT



LOCATION OF SECTION INDICATED THIS: - [shaded area]

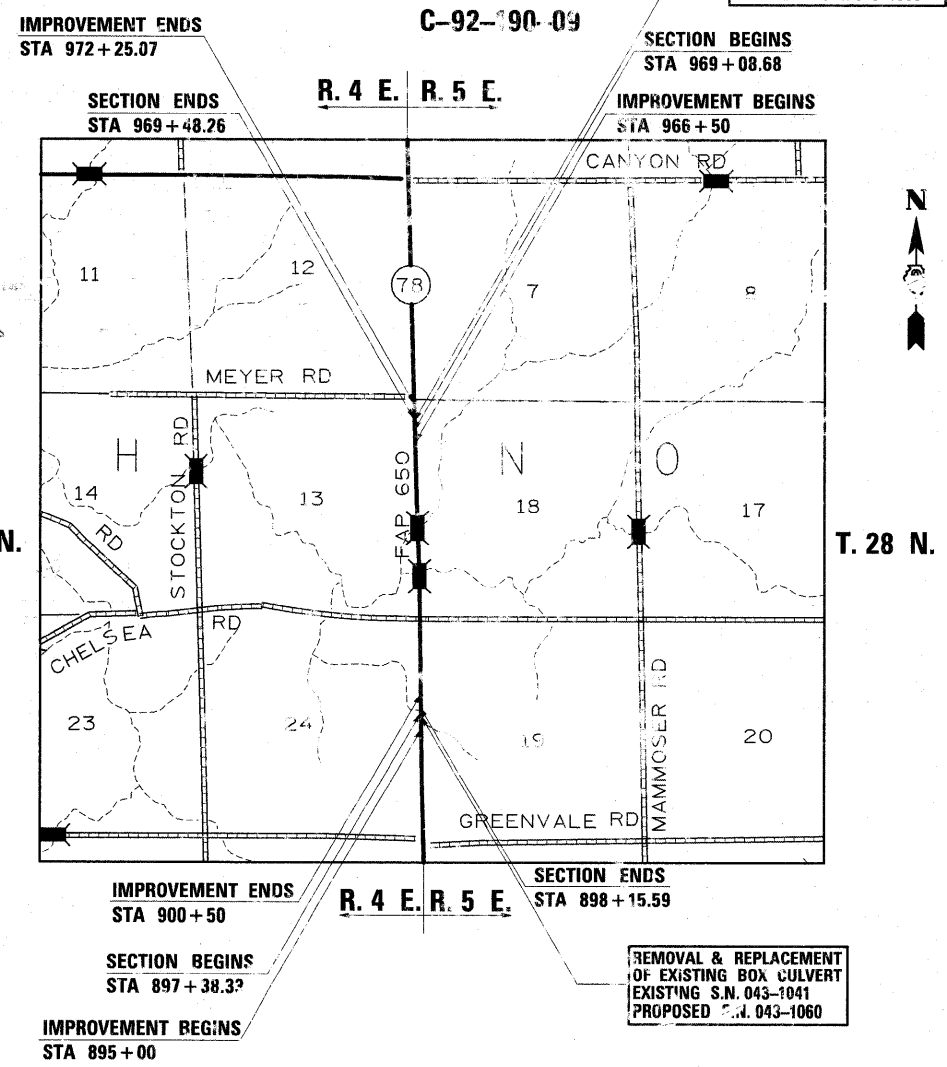


FULL SIZE PLANS HAVE BEEN PREPARED USING STANDARD ENGINEERING SCALES. REDUCED SIZED PLANS WILL NOT CONFORM TO STANDARD SCALES. IN MAKING MEASUREMENTS ON REDUCED PLANS, THE ABOVE SCALES MAY BE USED.

J.U.L.I.E.
JOINT UTILITY LOCATION INFORMATION FOR EXCAVATION
1-800-892-0123
OR 811

RUSH TOWNSHIP : SECTIONS 13 & 24
 NORA TOWNSHIP : SECTIONS 18 & 19
PROJECT ENGINEER : MASOOD AHMAD
PROJECT MANAGER : JENNIFER WILLIAMS (815)-284-5950
CONTRACT NO. 64C79

JO DAVIESS COUNTY SECTION 104T-2 F.A.P. 650 (IL 78)



GROSS SECTION LENGTH = 116.84 FT. = 0.022 MILE
 NET SECTION LENGTH = 116.84 FT. = 0.022 MILE

STATE OF ILLINOIS
DEPARTMENT OF TRANSPORTATION
DIVISION OF HIGHWAYS

SUBMITTED October 6, 2009
George F. Ryan
 DEPUTY DIRECTOR OF HIGHWAYS, REGION ENGINEER

December 4, 2009
Charles G. Ingersoll
 ENGINEER OF DESIGN AND ENVIRONMENT

December 4, 2009
Christine M. Reed
 DIRECTOR OF HIGHWAYS, CHIEF ENGINEER

PRINTED BY THE AUTHORITY
OF THE STATE OF ILLINOIS

DISTRICT 2, DIXON