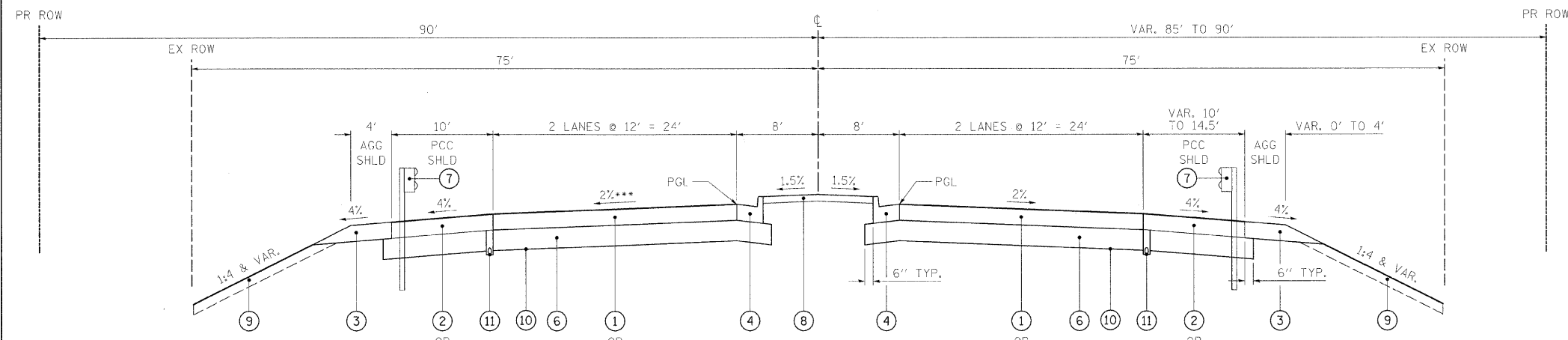


PROPOSED TYPICAL SECTION - IL 2

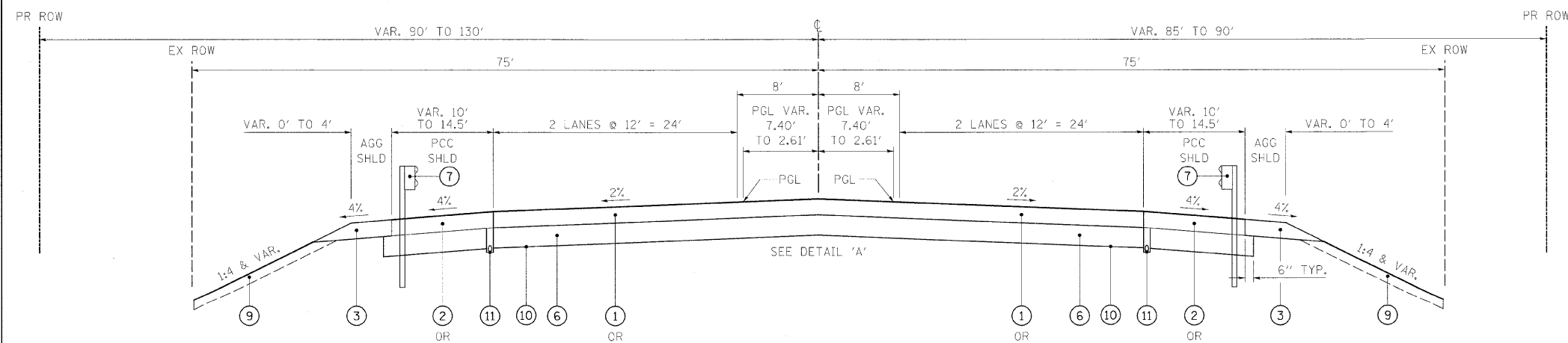
STA. 208+64.33 TO STA. 213+45.80

NOTE: ONLY 4.5' WIDE CONCRETE MEDIAN FROM STA. 208+64.33 TO STA. 210+43.79



PROPOSED TYPICAL SECTION - IL 2

STA. 213+45.80 TO STA. 215+67.27



PROPOSED TYPICAL SECTION - IL 2

STA. 217+06.02 TO STA. 219+45.61

LEGEND

- ① PORTLAND CEMENT CONCRETE PAVEMENT 9 1/2" (JOINTED)
NOTE: STABILIZED SUBBASE AS SHOWN IN HIGHWAY STANDARDS 420101 AND 420106 SHALL NOT BE REQUIRED.
- ② PORTLAND CEMENT CONCRETE SHOULDERS 9 1/2"
NOTE: STABILIZED SUBBASE AND SUBBASE GRANULAR MATERIAL, TYPE C AS SHOWN IN HIGHWAY STANDARD 483001 SHALL NOT BE REQUIRED.
- ③ AGGREGATE SHOULDERS, TYPE B
- ④ COMBINATION CONCRETE CURB AND GUTTER, TYPE B-6.24
- ⑤ BRIDGE APPROACH PAVEMENT CONNECTOR (PCC)
NOTE: STABILIZED SUBBASE AS SHOWN IN HIGHWAY STANDARD 420401 SHALL BE REPLACED WITH SUB-BASE GRANULAR MATERIAL, TYPE A 12".
- ⑥ SUB-BASE GRANULAR MATERIAL, TYPE A 12"
- ⑦ GUARDRAIL
- ⑧ CONCRETE MEDIAN SURFACE, 4 INCH
- ⑨ TOPSOIL FURNISH AND PLACE, 6"
- ⑩ GEOTECHNICAL REINFORCEMENT
- ⑪ PIPE UNDERDRAINS 4"
NOTE: STABILIZED SUBBASE AS SHOWN IN HIGHWAY STANDARD 601001 SHALL NOT BE REQUIRED.
- ⑫ CONCRETE MEDIAN, TYPE SB-6.12 (SPECIAL)
- ⑬ CORRUGATED MEDIAN

* BRIDGE APPROACH PAVEMENT CONNECTOR (PCC) WIDTH FROM OUTSIDE EDGE OF SHOULDER TO OUTSIDE EDGE OF SHOULDER FROM STA. 217+06.02 TO STA. 218+06.02.

** BRIDGE APPROACH PAVEMENT CONNECTOR (PCC) WIDTH FROM OUTSIDE EDGE OF SHOULDER TO INSIDE EDGE OF PAVEMENT FROM STA. 214+67.27 TO STA. 215+67.27.

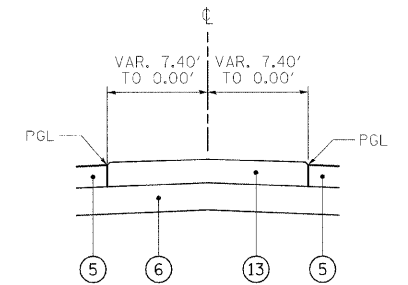
*** VARIES FROM +1.65% AT STA. 213+45.87 TO -2.00% AT STA. 214+59.06.

**** VARIES FROM +3.50% AT STA. 212+90.00 TO 1.67% AT STA. 213+45.80.

***** VARIES FROM -3.50% AT STA. 212+90.00 TO -2.00% AT STA. 213+36.11.

STRUCTURAL DESIGN INFORMATION (RIGID PAVEMENT)

STRUCTURE DESIGN TRAFFIC:	YEAR 2010
PV= 16940	SU= 1480 MU= 805
ROAD/STREET CLASSIFICATION:	CLASS I
PERCENT OF STRUCTURAL DESIGN TRAFFIC IN DESIGN LANE:	
P= 32%	S= 45% M= 45%
TRAFFIC FACTOR:	ACTUAL TF= 6.98 AC TYPE=
	MINIMUM TF= 6.03
PG GRADE:	BINDER= SURFACE=
SUBGRADE SUPPORT RATING:	
SSR= POOR	(STA. 209+00 TO STA. 220+00)



DETAIL 'A'

STA. 217+06.02 TO STA. 217+81.96

FILE NAME =	USER NAME = #USER#	DESIGNED -	REVISED -	STATE OF ILLINOIS DEPARTMENT OF TRANSPORTATION	TYPICAL SECTIONS			F.A.P. RTE.	SECTION	COUNTY	TOTAL SHEETS	SHEET NO.
#FILE#		DRAWN -	REVISED -		742	34BR-1	WINNEBAGO	78	15			
	PLOT SCALE = #SCALE#	CHECKED -	REVISED -		CONTRACT NO. 64E68							
	PLOT DATE = #DATE#	DATE -	REVISED -		ILLINOIS FED. AID PROJECT							
				SCALE: NTS	SHEET NO.	OF	SHEETS	STA.	TO STA.			