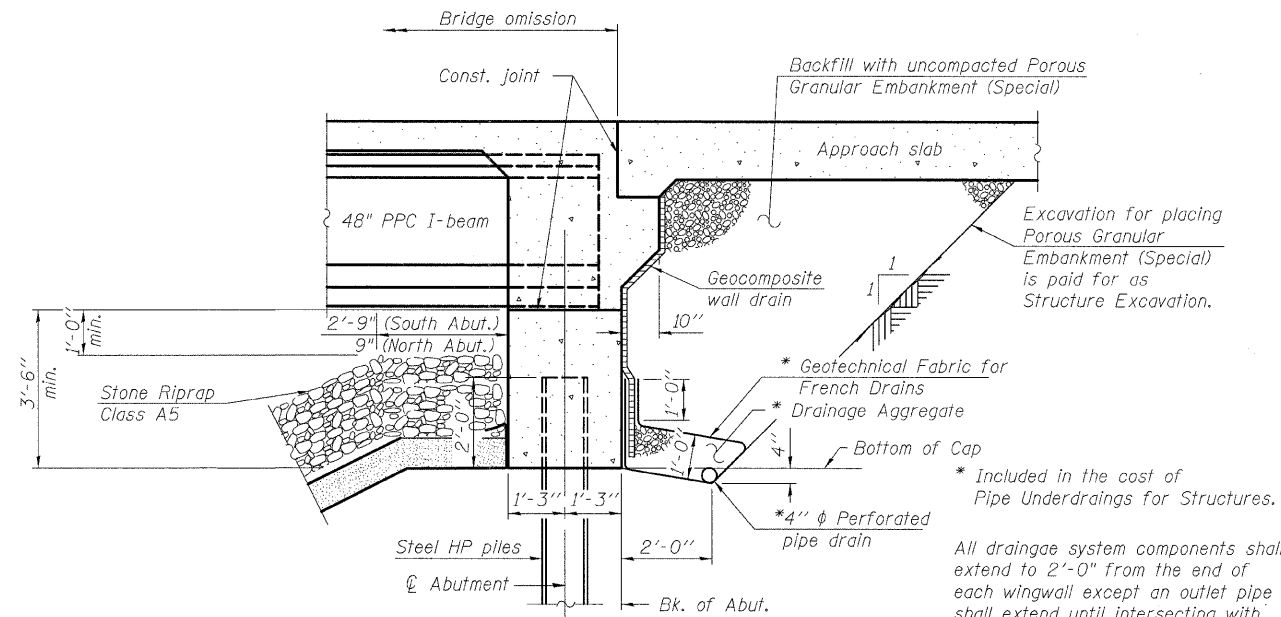
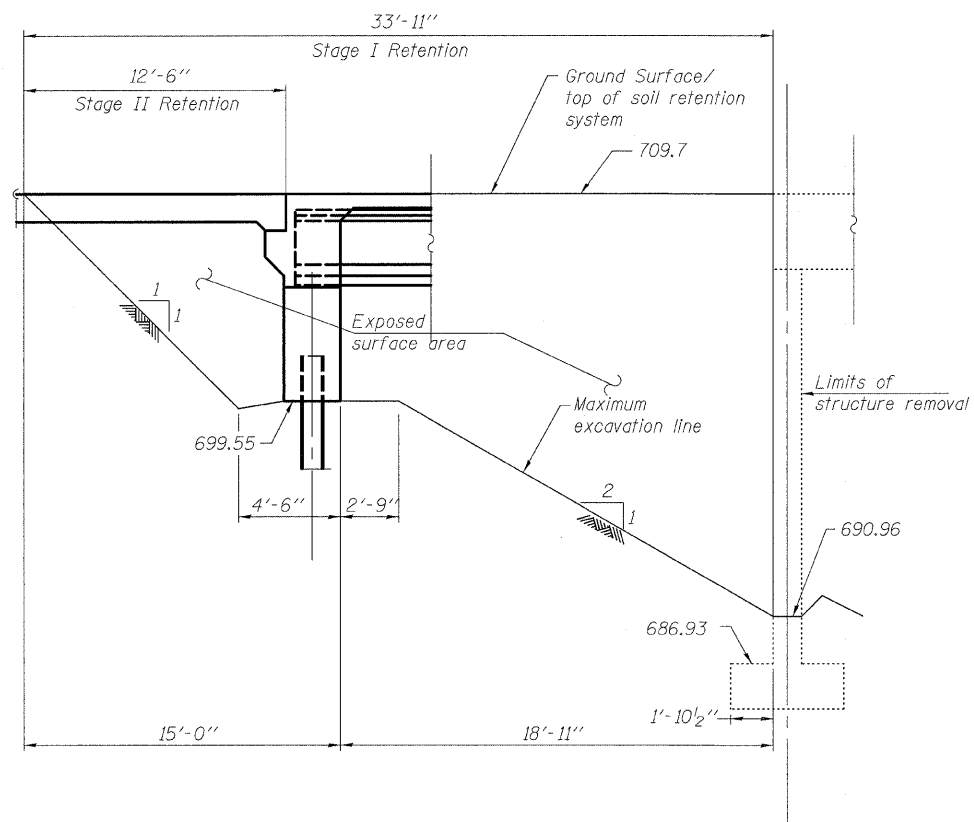


STATE OF ILLINOIS
DEPARTMENT OF TRANSPORTATION

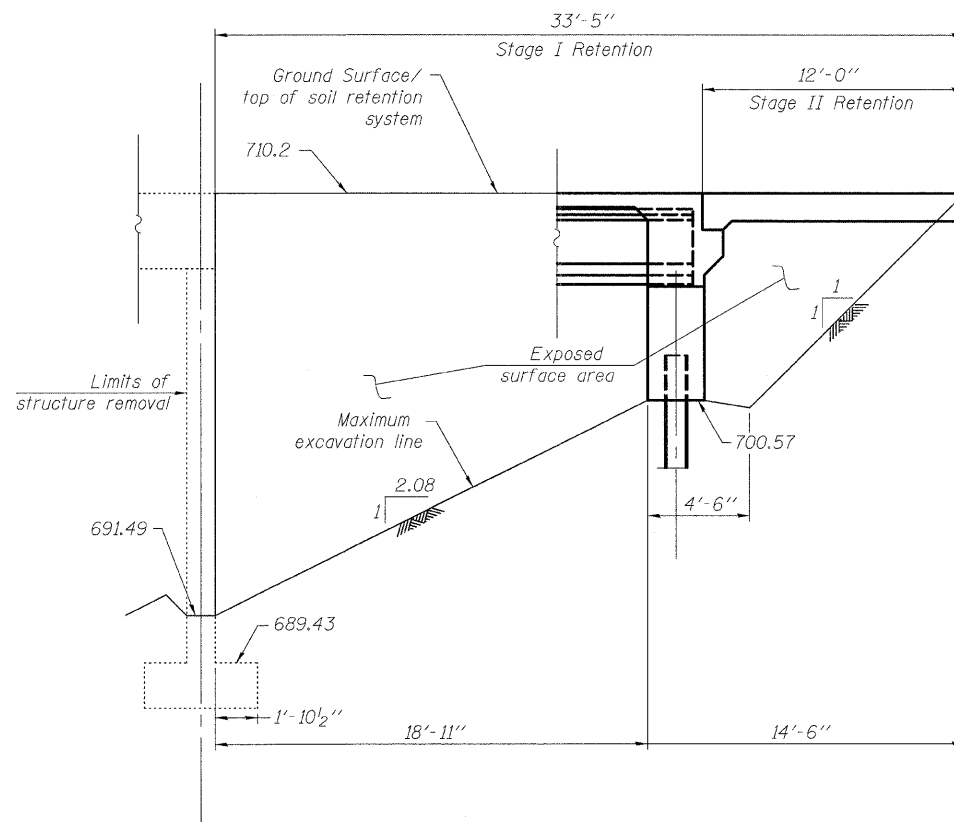


SECTION THRU INTEGRAL ABUTMENT

* Included in the cost of Pipe Underdrains for Structures.
All drainage system components shall extend to 2'-0" from the end of each wingwall except an outlet pipe shall extend until intersecting with the side slopes. The pipes shall drain into concrete headwalls. (See Article 601.05 of the Standard Specifications and Highway Standard 60110.1)



SOUTH TEMPORARY SOIL RETENTION



NORTH TEMPORARY SOIL RETENTION

TEMPORARY SOIL RETENTION SYSTEM AND DRAINAGE DETAILS STRUCTURE NO. 101-0184

Note:
A cantilever sheet piling design does not appear feasible and additional members or other retention systems may be necessary. The Contractor shall submit a temporary soil retention system design including plan details and calculations for review and acceptance by the Engineer.

DESIGNED	PRD
CHECKED	WAT
DRAWN	RTG/PRD
CHECKED	ASP

DLZ DLZ Illinois, Inc.
85 W. Algonquin Rd. Ste. 220
Arlington Heights IL 60005

SHEET NO. 4 OF 22 SHEETS	F.A.P. RTE.	SECTION	COUNTY	TOTAL SHEETS	SHEET NO.
	742	34BR-1	WINNEBAGO	78	39
CONTRACT NO. 64E68					
FED. ROAD DIST. NO. 2 ILLINOIS FED. AID PROJECT					