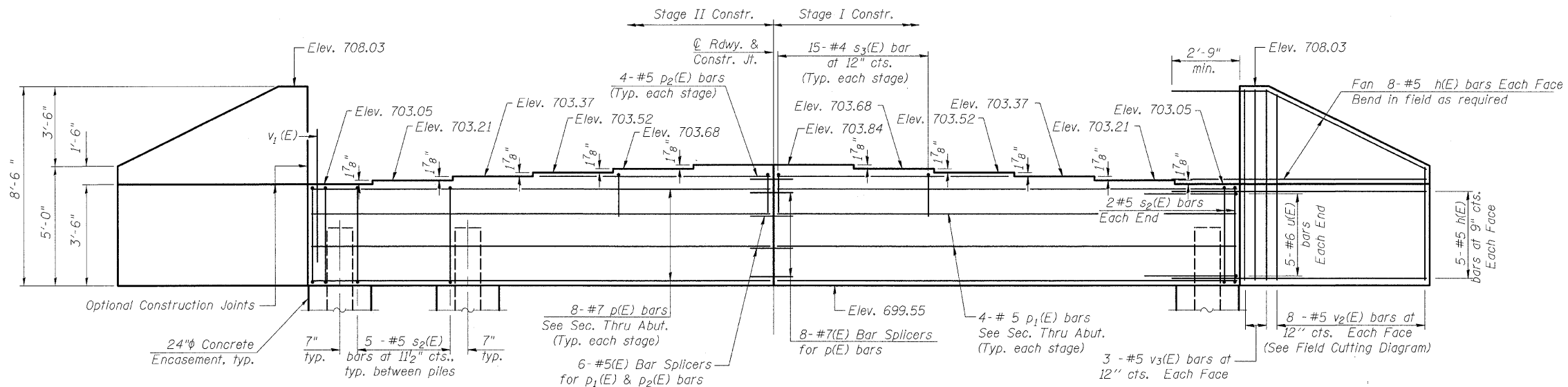
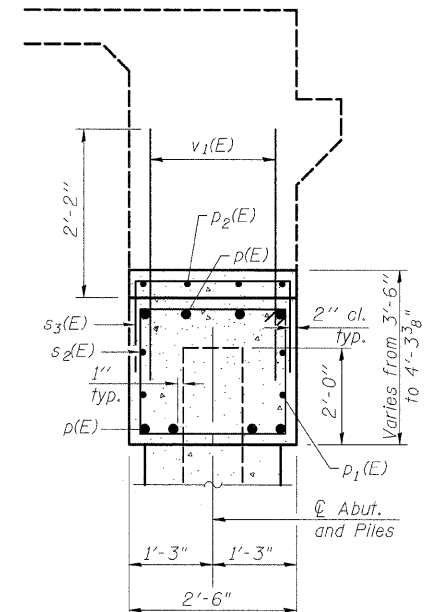


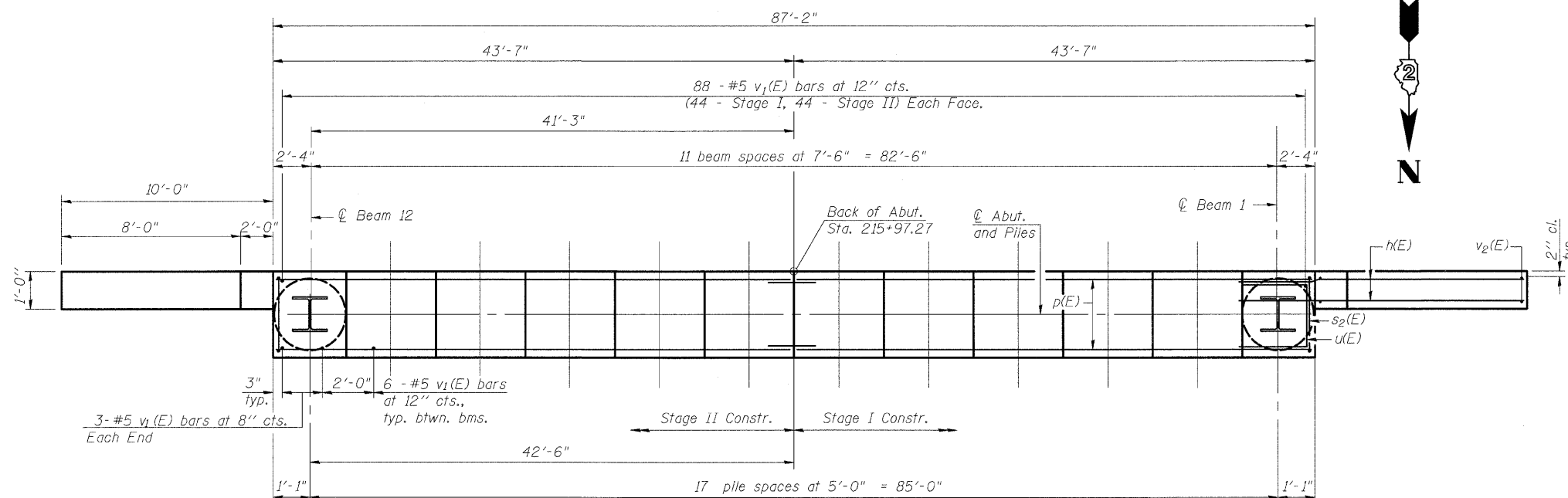
STATE OF ILLINOIS
DEPARTMENT OF TRANSPORTATION



ELEVATION
(Looking South)



SEC. THRU ABUT.

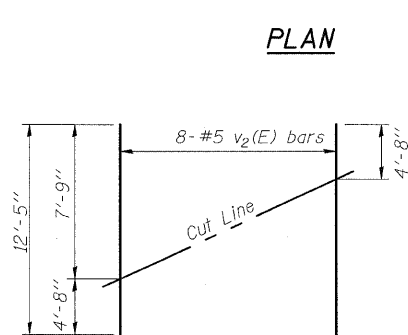


PLAN

PILE DATA

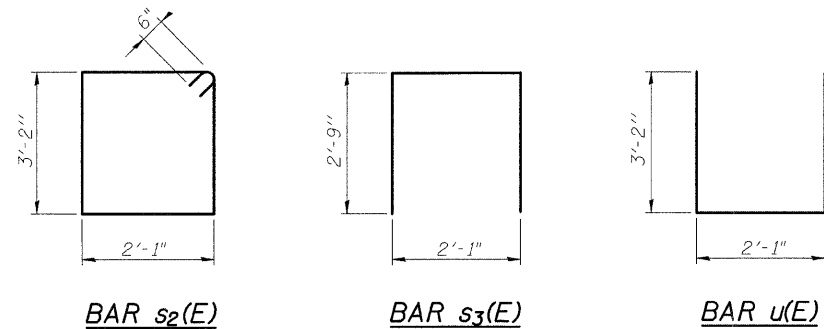
Type: HP 12x63
Nominal Required Bearing: 480 Kips
Factored Resistance Available: 240 Kips
Est. Length: 57'-0"
No. Production Piles: 17
No. Test Piles: 1

DESIGNED	PRD
CHECKED	WAT
DRAWN	RTG/PRD
CHECKED	ASP



FIELD CUTTING DIAGRAM

Order v2(E) full length. Cut as shown and use remainder of bars in opposite face.



BAR s2(E)

BAR s3(E)

BAR u(E)

BILL OF MATERIAL

Bar	No.	Size	Length	Shape
h(E)	26	#5	12'-7"	—
p(E)	16	#7	43'-5"	—
p1(E)	8	#5	43'-5"	—
p2(E)	8	#5	22'-6"	—
s2(E)	89	#5	11'-6"	□
s3(E)	30	#4	7'-7"	□
u(E)	10	#6	8'-5"	□
v1(E)	144	#5	4'-4"	—
v2(E)	16	#5	12'-5"	—
v3(E)	12	#5	8'-2"	—
Structure Excavation		Cu. Yd.	83	
Concrete Structures		Cu. Yd.	36.8	
Reinforcement Bars, Epoxy Coated		Pound	4570	
Furnishing Steel Piles, HP12x63		Foot	969	
Driving Piles		Foot	969	
Test Pile, HP12x63		Each	1	
Concrete Encasement		Cu. Yd.	6.3	

Notes:
Pour steps monolithically with cap.
For details of Bar Splicers, see sheet 19 of 21.
For details of piles and Concrete Encasement, see sheet 18 of 21.
Reinforcement bars designated (E) shall be epoxy coated.

**SOUTH ABUTMENT
STRUCTURE NO.101-0184**

SHEET NO. 17 OF 22 SHEETS	F.A.P. RTE.	SECTION	COUNTY	TOTAL SHEETS	SHEET NO.
	742	34BR-1	WINNEBAGO	78	52
CONTRACT NO. 64E68					
FED. ROAD DIST. NO. 2 ILLINOIS FED. AID PROJECT					