

F.A.P. RTE.	SECTION	COUNTY	TOTAL SHEETS	SHEET NO.
41	(15BR-3)-1	LIVINGSTON	45	1
FED. ROAD DIST. NO.		ILLINOIS	CONTRACT NO. 66833	

**STATE OF ILLINOIS
DEPARTMENT OF TRANSPORTATION
DIVISION OF HIGHWAYS**

**PROPOSED
HIGHWAY PLANS**

**FAP ROUTE 41 (IL 17)
SECTION (15BR-3)-1
PROJECT ACF-0041(132)
LIVINGSTON COUNTY**

**C - 93 - 158 - 09
STRUCTURE REPLACEMENT CARRYING IL 17 OVER
TRIBUTARY OF REDDICK RUN**

D-93-067-09
P-93-012-08



FUNCTION CLASSIFICATION
MINOR ARTERIAL (RURAL)
2007 ADT = 2400
P.V. = 76.1% S.U. = 9.1% M.U. = 14.8%

STATE OF ILLINOIS
DEPARTMENT OF TRANSPORTATION
DIVISION OF HIGHWAYS

SUBMITTED October 13 2009
George Ryan
DEPUTY DIRECTOR OF HIGHWAYS, REGION ENGINEER
December 4, 2009
Charles G. Ingersoll
ENGINEER OF DESIGN AND ENVIRONMENT
December 4, 2009
Christine M. Reed
DIRECTOR OF HIGHWAYS, CHIEF ENGINEER

**PRINTED BY THE AUTHORITY
OF THE STATE OF ILLINOIS**

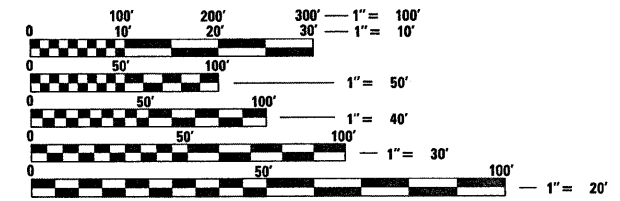
INDEX OF SHEETS

- 1 COVER SHEET & STANDARDS
- 2 GENERAL NOTES
- 3 SUMMARY OF QUANTITIES
- 4 TYPICAL SECTIONS
- 5 - 6 SCHEDULE OF QUANTITIES
- 7 ALIGNMENT & TIES
- 8 - 9 PLAN & PROFILE
- 10 - 11 STAGE CONSTRUCTION DETAILS
- 12 - 33 STRUCTURE PLANS
- 34 - 41 FOR INFORMATION ONLY - STRUCTURE
- 42 DETAILS
- 43 - 45 CROSS SECTIONS

STANDARDS

- 000001-05 STANDARD SYMBOLS, ABBREVIATIONS AND PATTERNS
- 280001-05 TEMPORARY EROSION CONTROL SYSTEMS
- 420401-08 BRIDGE APPROACH PAVEMENT CONNECTOR
- 482011-03 HMA SHOULDER STRIPS/SHOULDERS WITH RS OR WIDENING & RS PROJECTS
- 515001-03 NAME PLATE FOR BRIDGES
- 601101-01 CONCRETE HEADWALL FOR PIPE DRAINS
- 630001-08 STEEL PLATE BEAM GUARDRAIL
- 630201-06 PCC/HMA STABILIZATION AT STEEL PLATE BEAM GUARDRAIL
- 630301-05 SHOULDER WIDENING FOR TYPE 1 (SPECIAL) GUARDRAIL TERMINALS
- 631031-08 TRAFFIC BARRIER TERMINAL, TYPE 6
- 635006-03 REFLECTOR AND TERMINAL MARKER PLACEMENT
- 635011-02 REFLECTOR MARKER AND MOUNTING DETAILS
- 701001-02 OFF-ROAD OPERATIONS 2L, 2W, MORE THAN 15' (4.5 m) AWAY
- 701006-03 OFF-ROAD OPERATIONS 2L, 2W, 15' (4.5 m) TO 24" (600 mm) FROM PAVEMENT EDGE
- 701201-03 LANE CLOSURE, 2L, 2W, DAY ONLY, FOR SPEEDS ≥ 45 MPH
- 701301-03 LANE CLOSURE, 2L, 2W, SHORT TIME OPERATIONS
- 701311-03 LANE CLOSURE, 2L, 2W, MOVING OPERATIONS - DAY ONLY
- 701321-10 LANE CLOSURE, 2L, 2W, BRIDGE REPAIR WITH BARRIER
- 701326-03 LANE CLOSURE, 2L, 2W, PAVEMENT WIDENING, FOR SPEEDS ≥ 45 MPH
- 701901-01 TRAFFIC CONTROL DEVICES
- 704001-06 TEMPORARY CONCRETE BARRIER
- 780001-02 TYPICAL PAVEMENT MARKINGS
- 781001-03 TYPICAL APPLICATIONS RAISED REFLECTIVE PAVEMENT MARKERS

MICROFILMED _____
REEL NUMBER _____
AWARDED _____
RESIDENT ENGINEER _____
AS BUILT CHANGES WERE MADE
ON THE FOLLOWING SHEETS _____

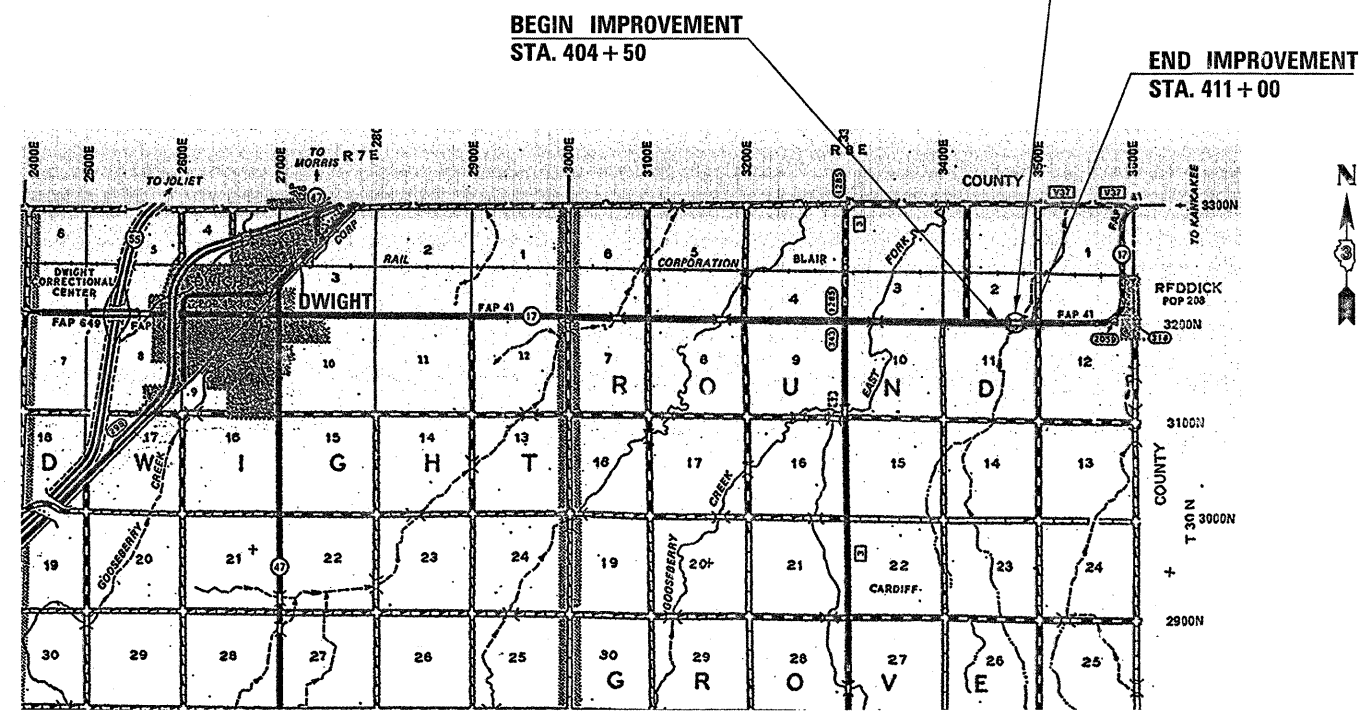


FULL SIZE PLANS HAVE BEEN PREPARED USING STANDARD ENGINEERING SCALES. REDUCED SIZED PLANS WILL NOT CONFORM TO STANDARD SCALES. IN MAKING MEASUREMENTS ON REDUCED PLANS, THE ABOVE SCALES MAY BE USED.

J.U.L.I.E.
JOINT UTILITY LOCATION INFORMATION FOR EXCAVATION
1-800-892-0123
OR 811

**PROJECT ENGINEER : CRAIG REED
UNIT CHIEF : BRAD DUNCAN
TOWNSHIP: ROUND GROVE**

**DISTRICT 3 NO. (815) 434-6131
CONTRACT NO. 66833**



NOT TO SCALE

GROSS & NET LENGTH = 650FT. = 0.12 MI.

PLOT DATE = Oct 09, 2009 - 08:05:00 AM
FILE NAME = c:\pwwork\pwwork\PROJECTS\66833\dms32420\duncanbd\366833-sht-cover.dgn
PLOT SCALE = 50.0000' / IN.
USER NAME = duncambd