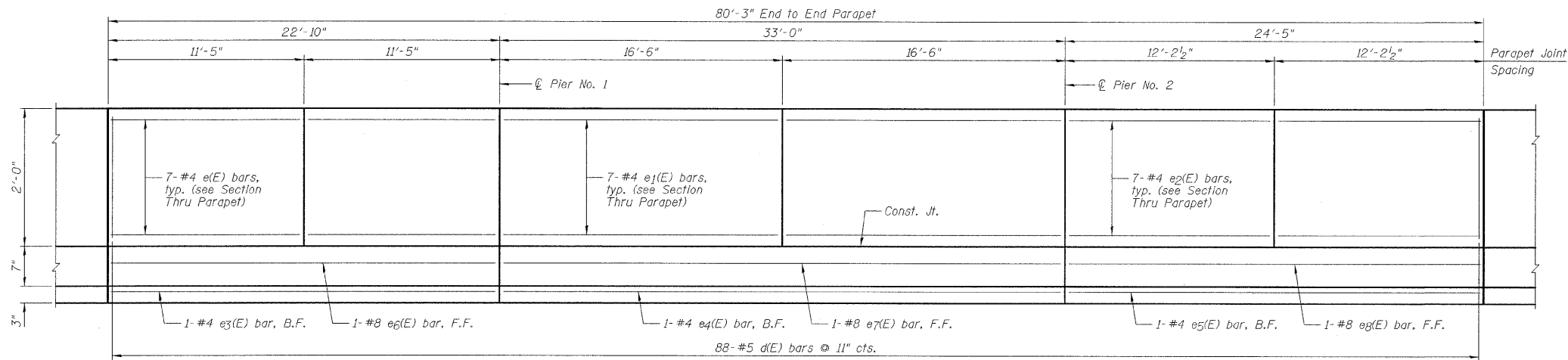


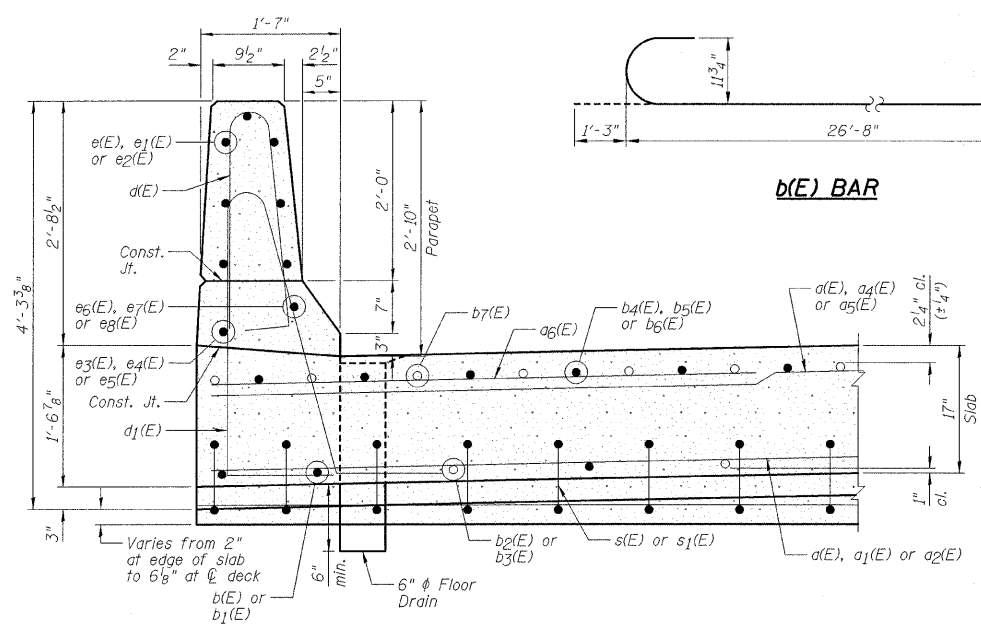
STATE OF ILLINOIS  
DEPARTMENT OF TRANSPORTATION

**SUPERSTRUCTURE  
BILL OF MATERIAL**

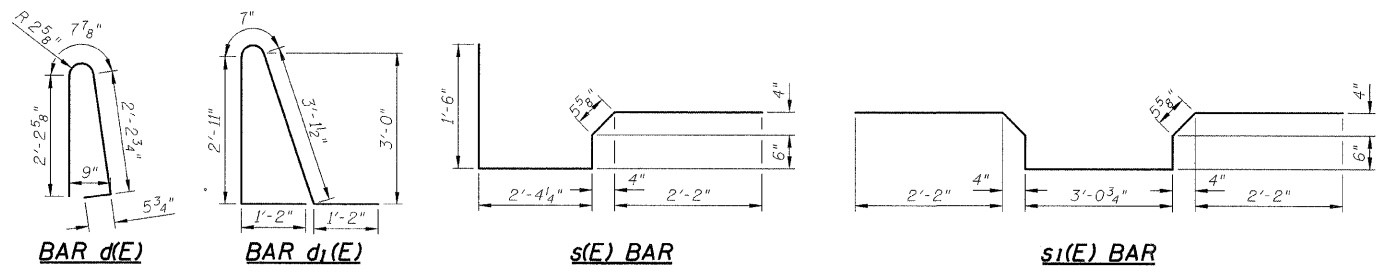
Bar	No.	Size	Length	Shape
a(E)	208	#5	19'-3"	—
a1(E)	17	#5	22'-0"	—
a2(E)	17	#5	21'-2"	—
a3(E)	24	#5	27'-3"	—
a4(E)	11	#5	21'-0"	—
a5(E)	11	#5	21'-2"	—
a6(E)	100	#6	6'-0"	—
b(E)	56	#9	27'-11"	—
b1(E)	28	#9	37'-11"	—
b2(E)	52	#9	20'-0"	—
b3(E)	26	#9	23'-0"	—
b4(E)	68	#5	10'-8"	—
b5(E)	68	#9	27'-6"	—
b6(E)	34	#5	14'-0"	—
b7(E)	68	#9	16'-0"	—
d(E)	176	#5	5'-7"	—
d1(E)	172	#5	9'-0"	—
e(E)	28	#4	11'-1"	—
e1(E)	28	#4	16'-2"	—
e2(E)	28	#4	11'-10"	—
e3(E)	2	#4	22'-6"	—
e4(E)	2	#4	32'-8"	—
e5(E)	2	#4	24'-1"	—
e6(E)	2	#8	22'-6"	—
e7(E)	2	#8	32'-8"	—
e8(E)	2	#8	24'-1"	—
s(E)	80	#4	7'-0"	—
s1(E)	80	#4	9'-4"	—
Item	Unit	Quantity		
Concrete Superstructure	Cu. Yd.	198.0		
Bridge Deck Grooving	Sq. Yd.	308		
Protective Coat	Sq. Yd.	396		
Reinforcement Bars, Epoxy Coated	Pound	37,590		
Bar Splicers	Each	219		



**INSIDE ELEVATION OF PARAPET**

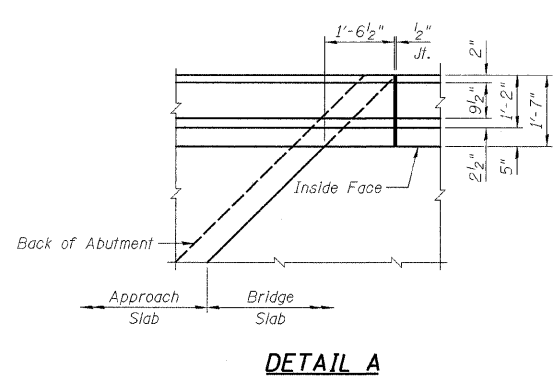
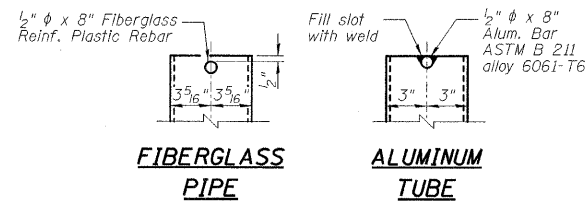


**SECTION THRU PARAPET**

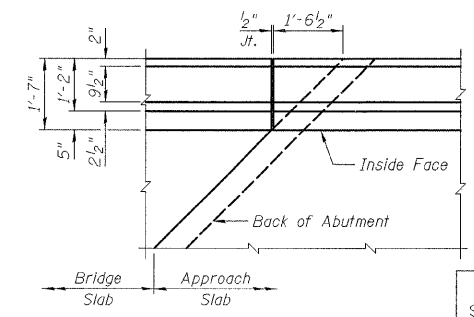


**BAR CUTTING DIAGRAM**

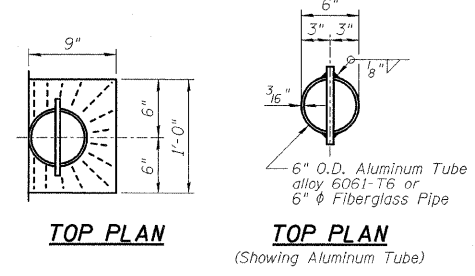
BAR	A	B	C	D	E	F	L
a1(E)	19'-0"	3'-0"	19'-0"	3'-0"	1	17	22'-0"
a2(E)	18'-7"	2'-7"	18'-7"	2'-7"	1	17	21'-2"
a4(E)	18'-0"	3'-0"	18'-0"	3'-0"	1	11	21'-0"
a5(E)	18'-1"	3'-1"	18'-1"	3'-1"	1	11	21'-2"



**DETAIL A**



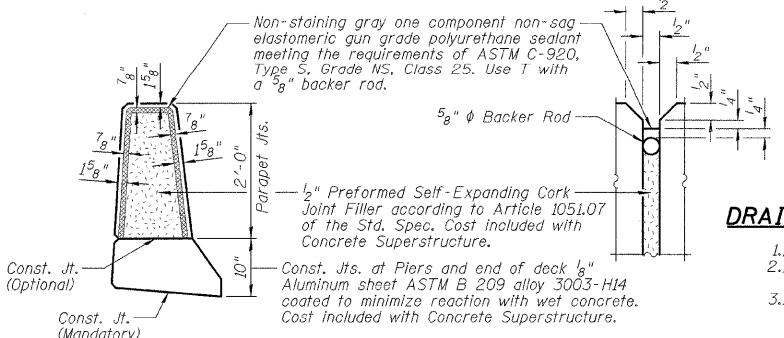
**DETAIL B**



**TOP PLAN**



**TOP PLAN (Showing Aluminum Tube)**



**PARAPET JOINT DETAILS**

- DRAIN NOTES:**
- 1.) Space Drains to miss slab reinforcement.
  - 2.) Fiberglass pipe shall conform to ASTM D2996, with short-time rupture strength hoop tensile stress of 30,000 p.s.i. minimum.
  - 3.) The exterior surfaces of the floor drains shall be coated or pigmented by the manufacturer with a color that matches the concrete.

- NOTES:**
- 1.) B.F. Denotes Back Face and F.F. Denotes Front Face.
  - 2.) For location of Detail A and Detail B, see Sheet B9.
  - 3.) Inside elevation of parapet is exaggerated vertically to show reinforcement.

**SUPERSTRUCTURE DETAILS  
STRUCTURE NO. 053-0185**

DESIGNED	SDH
CHECKED	JML
DRAWN	JWK/DJM
CHECKED	MSW
DATE	10/07/09

SHEET NO. B11	F.A.P. RTE.	SECTION	COUNTY	TOTAL SHEETS	SHEET NO.
22 SHEETS	41	(15BR-3)-1	LIVINGSTON	45	22
		SN 053-0185	CONTRACT NO. 66833		
		FED. ROAD DIST. NO.	ILLINOIS	FED. AID PROJECT	